

Toll Brothers
AMERICA'S LUXURY HOME BUILDER®



MONTAINE | ESTATE COLLECTION

Ogden Prairie

HOME SITE 560 | 4545 WEITBREC LANE | CASTLE ROCK, CO 80104

Designer Appointed Features | EXTERIOR SELECTIONS

Designer Appointed Features are home details and finishes curated by the talented design professionals responsible for the distinctive looks found in our model homes.



1		BODY 1 Attitude Gray SW 7060	3		FRONT DOOR Sealskin SW 7675	5		TRIM Balanced Beige SW 7037	7		ROOF Weathered Wood GAF	9		STONE PANEL Cream Tivoli Panel
2		BODY 2 Keystone Gray SW 7504	4		GARAGE DOOR Attitude Gray SW 7060	6		STONE Osceola Rubble Cut Stone	8		WINDOW White			

MONTAINE | ESTATE COLLECTION | OGDEN PRAIRIE
HOME SITE 560 | 4545 WEITBREC LANE | CASTLE ROCK, CO 80104

Photographs, renderings, and floor plans are for representational purposes only and may not reflect the exact features or dimensions of your home; actual product may differ. All dimensions are subject to field variations. Prices and offers subject to change without notice. This is not an offering where prohibited by law. Not all images may be shown. See online or onsite Sales Consultants for details.



Designer Appointed Features are home details and finishes curated by the talented design professionals responsible for the distinctive looks found in our model homes.

UNFINISHED BASEMENT
37'9" X 36'8"

OPTIONAL WINDOW
OPTIONAL WINDOW
UP
SLOPED CEILING
HVAC
OPTIONAL WINDOW

NOTE:
DESIGNS ARE SUBJECT TO FIELD VARIATIONS DUE TO EXACT HOME EXTERIOR DESIGN, OPTIONS PURCHASED, AND LOCATIONS OF MECHANICAL AND SUMP PUMP EQUIPMENT, WHICH MAY ALSO VARY AMONG INDIVIDUAL LOTS AND COMMUNITIES.

STEEL COLUMNS CAN NEVER BE REMOVED. OPTIONS MAY ADD ADDITIONAL COLUMNS. PLEASE CONSULT SALES REPRESENTATIVE FOR SPECIFIC DETAILS.

COVERED PATIO
16' X 10'

TWO-STORY GREAT ROOM
24'9" X 23'5"
19'3" CEILING

KITCHEN/CASUAL DINING
27'8" X 14'9"

OPTIONAL CABINETS
MICRO/WALL OVEN
DW
REF SPACE
WALK-IN PANTRY

DINING ROOM
17'6" X 12'6"

OPTIONAL TRAY CEILING

TWO-STORY FOYER
19'3" CEILING

POWDER ROOM

OFFICE
12'6" X 12'4"
SLOPE TO 15' CEILING

3-CAR GARAGE
30'8" X 20'1"

BEDROOM 4
14' X 12'2"

BATH
WALK-IN CLOSET 5'6" X 5'1"
LAUNDRY
W/D SPACE
OPT SINK
OPTIONAL CABINETS
EVERYDAY ENTRY
STORAGE
SLOPED CEILING
UP
DOWN
PORCH

OPTIONAL DOOR
STEPS FROM HOME TO GARAGE/ PORCH/ PATIO MAY VARY DUE TO SITE CONDITIONS.

BEDROOM 3
14'8" X 13'7"

BEDROOM 2
15'9" X 12"

LOFT
11' X 10'

OPEN TO GREAT ROOM BELOW

PRIMARY BEDROOM SUITE
15'7" X 14'3"

PRIMARY BATH

SITTING AREA
12'6" X 8'3"

WALK-IN CLOSET 9'3" X 8'5"

WALK-IN CLOSET 5'6" X 5'3"

BATH

STORAGE

OPEN TO FOYER BELOW

* DENOTES HIGH WINDOW

132173

055 (not shown)

023



Designer Appointed Features | INTERIOR SELECTIONS

Designer Appointed Features are home details and finishes curated by the talented design professionals responsible for the distinctive looks found in our model homes.

1 WALL PAINT

Sherwin Williams
Pure White | Whole Home

2 INTERIOR DOORS

2 Panel - Raised
Pure White | 8' Hollow Core

3 INTERIOR DOOR HANDLES

Kwikset - Halifax
Matte Black | Levers

4 FLOORING-CARPET

Shaw - Golden Sands
Nature Walk | Pattern Carpet

5 FLOORING-TILE

AZT - Futura
Beige | 12"x24"

6 FLOORING-HARDWOOD

Kingston Oak
Tapestry | 7" Wide Plank

7 LIGHTING

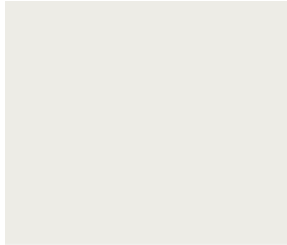
Foyer Light
Vintage Brass

8 STAIR RAILING

Horizontal Metal
Matte Black Metal |

9 BASE AND CASE

Flatline
Pure White | 5" Base 3 1/4" Case



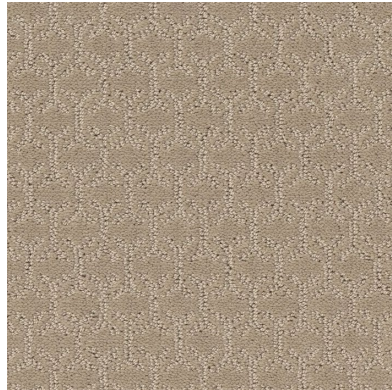
1



2



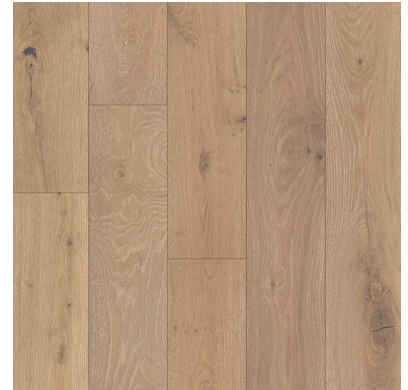
3



4



5



6



7



8



9

Designer Appointed Features | KITCHEN

Designer Appointed Features are home details and finishes curated by the talented design professionals responsible for the distinctive looks found in our model homes.

1 CABINETS

Mastercraft - Haxton
White Icing | Soft Close

2 CABINETS - ISLAND

Mastercraft - Haxton
Eucalyptus | Soft Close

3 HARDWARE

Modern Pulls
Modern Brass | Doors and Drawers

4 COUNTERTOP

AZT - Quartz
New Venatino Beige | 3cm Slab

5 BACKSPLASH

AZT - S-Series
Soft Sage | Scallop Mosaic

6 FLOORING-HARDWOOD

Kingston Oak
Tapestry | 7" Wide Plank

7 FAUCET

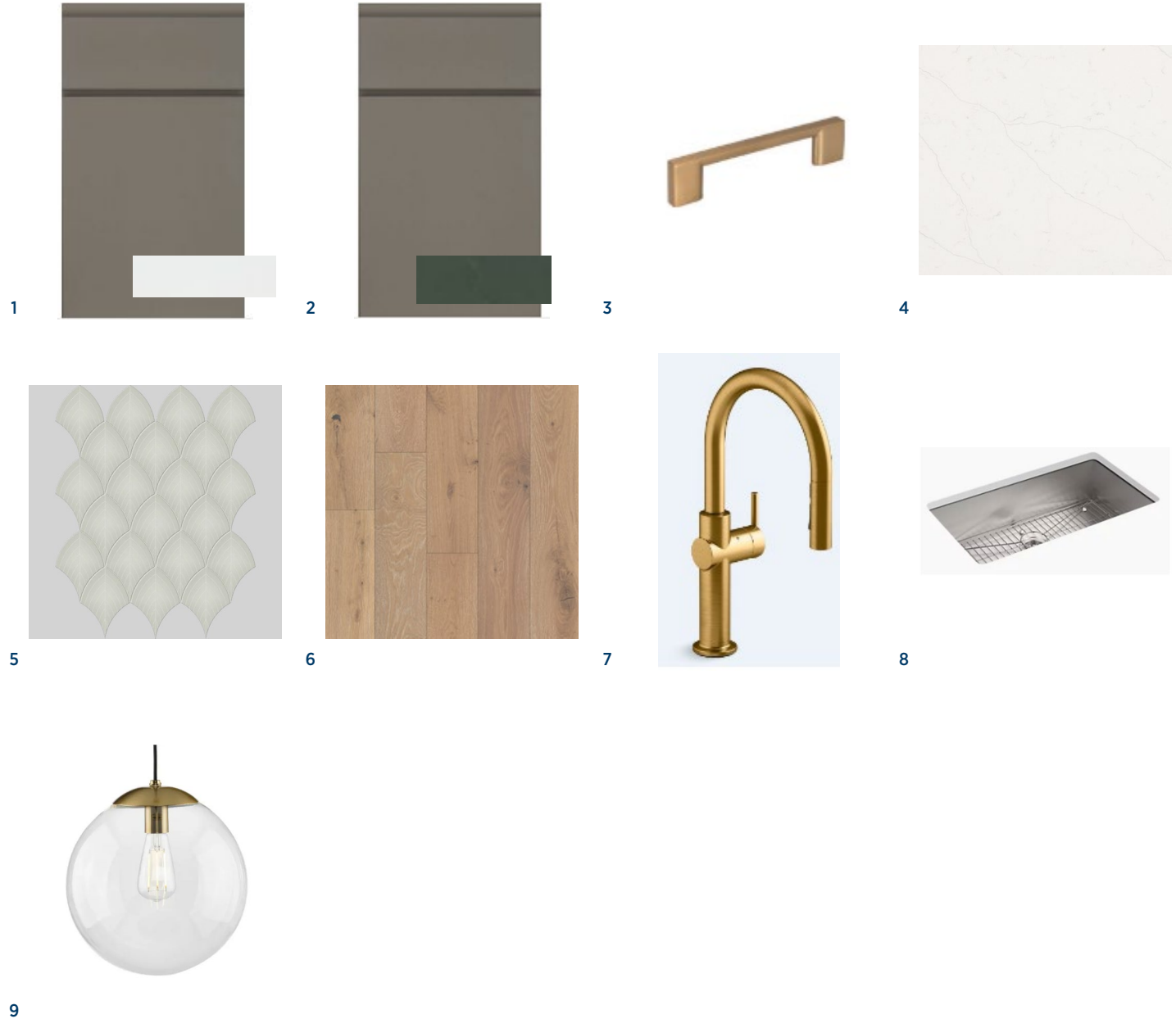
Kohler - Crue
Modern Brass | Touchless

8 SINK

Kohler - Vault
Stainless Steel | Single Bowl Undermount

9 LIGHTING-ISLAND

Modern Brass Fixture
3 Lights above island



Designer Appointed Features | KITCHEN APPLIANCES

Designer Appointed Features are home details and finishes curated by the talented design professionals responsible for the distinctive looks found in our model homes.

1 REFRIGERATOR

JennAir
Stainless Steel | 42" Built In

2 RANGE

JennAir
Stainless Steel | 36" Rangetop

3 VENT HOOD

JennAir
Stainless Steel | Under Cabinet

4 WALL OVEN

JennAir
Stainless Steel | Double Oven

5 MICROWAVE

JennAir
Stainless Steel | Microwave Drawer

6 DISHWASHER

JennAir
Stainless Steel |

1



2



3



4



5



6



Designer Appointed Features | POWDER ROOM

Designer Appointed Features are home details and finishes curated by the talented design professionals responsible for the distinctive looks found in our model homes.

1 PEDESTAL SINK

Kohler - Archer
White | 24" Pedestal

2 FAUCET

Kohler - Hint
Modern Brass | Single Hole Faucet

3 TOILET

Kohler - Highline
White | Comfort Height

4 FLOORING

Kingston Oak
Tapestry | 7" Wide Plank

5 LIGHTING

Modern Brass Fixture
2 Lights

6 BATH ACCESSORIES

Modern Brass

1



2



3



4



5



6



Designer Appointed Features | PRIMARY BATHROOM

Designer Appointed Features are home details and finishes curated by the talented design professionals responsible for the distinctive looks found in our model homes.

1 VANITY CABINETS

Mastercraft - Haxton
White Icing | Soft Close

2 HARDWARE

Modern Pulls
Modern Brass | Doors and Drawers

3 COUNTERTOP

AZT - Quartz
New Venatino Beige | 3cm Slab

4 FAUCET

Kohler - Hint
Modern Brass | Widespread Faucet

5 SINK

Kohler - Caxton
White | Undermount Rectangle

6 SHOWER TILE—WALLS

AZT - 3D Blade
White Matte | 12"x22"

7 SHOWER TILE—FLOOR

AZT - Futura
Beige | 2"x2"

8 SHOWER FIXTURES

Kohler - Hint
Modern Brass |

9 TUB

Kohler - Sunstruck
White | 5' Oval

10 TUB FAUCET

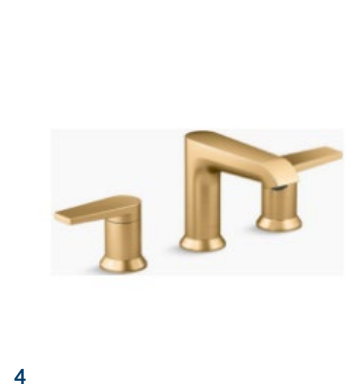
Kohler - Hint
Modern Brass | Hand sprayer

11 TOILET

Kohler - Highline
White | Comfort Height

12 BATH ACCESSORIES

Modern Brass



Designer Appointed Features | SECONDARY BATHS

Designer Appointed Features are home details and finishes curated by the talented design professionals responsible for the distinctive looks found in our model homes.

1 VANITY CABINETS

Mastercraft - Haxton
White Icing | Soft Close

2 HARDWARE

Modern Pulls
Modern Brass | Doors and Drawers

3 COUNTERTOP

AZT - Quartz
New Venatino Beige | 3cm Slab

4 FAUCET

Kohler - Hint
Modern Brass | Single Hole Faucet

5 SINK

Kohler - Caxton
White | Undermount Rectangle

6 SHOWER TILE—WALLS

AZT - Paloma
Cotton Glossy | 3"x6"

7 BATH TILE—FLOOR

AZT - Futura
Beige | 12"x24"

8 TOILET

Kohler - Highline
White | Comfort Height

9 LIGHTING

Modern Brass Vanity Light
3 Lights



1

2

3



4

5

6



7



8



9