

*Toll Brothers*  
AMERICA'S LUXURY HOME BUILDER®



REGENCY AT MONTAINE | JEFFERSON COLLECTION

# Whitley Traditional

HOME SITE 91 | 149 LEAFY ASTER LANE | CASTLE ROCK, CO 80104



# Designer Appointed Features | EXTERIOR SELECTIONS

Designer Appointed Features are home details and finishes curated by the talented design professionals responsible for the distinctive looks found in our model homes.



1		<b>BODY 1</b> Backdrop SW 7025	3		<b>FRONT DOOR</b> Carnelian SW 7580	5		<b>STONE</b> Champaign MTN Ledge stone	7		<b>ROOF</b> Weathered Wood	9		<b>METAL ROOF</b> Dark Bronze
2		<b>TRIM</b> Keystone Gray SW 7504	4		<b>GARAGE DOOR</b> Functional Gray SW 7024	6		<b>BODY 2</b> Functional Gray SW 7024	8		<b>SHUTTERS</b> Carnelian SW 7580	10		<b>WINDOWS</b> White

REGENCY AT MONTAINE | JEFFERSON COLLECTION | WHITLEY TRADITIONAL  
HOME SITE 91 | 149 LEAFY ASTER LANE | CASTLE ROCK, CO 80104

Photographs, renderings, and floor plans are for representational purposes only and may not reflect the exact features or dimensions of your home; actual product may differ. All dimensions are subject to field variations. Prices and offers subject to change without notice. This is not an offering where prohibited by law. Not all images may be shown. See online or onsite Sales Consultants for details.



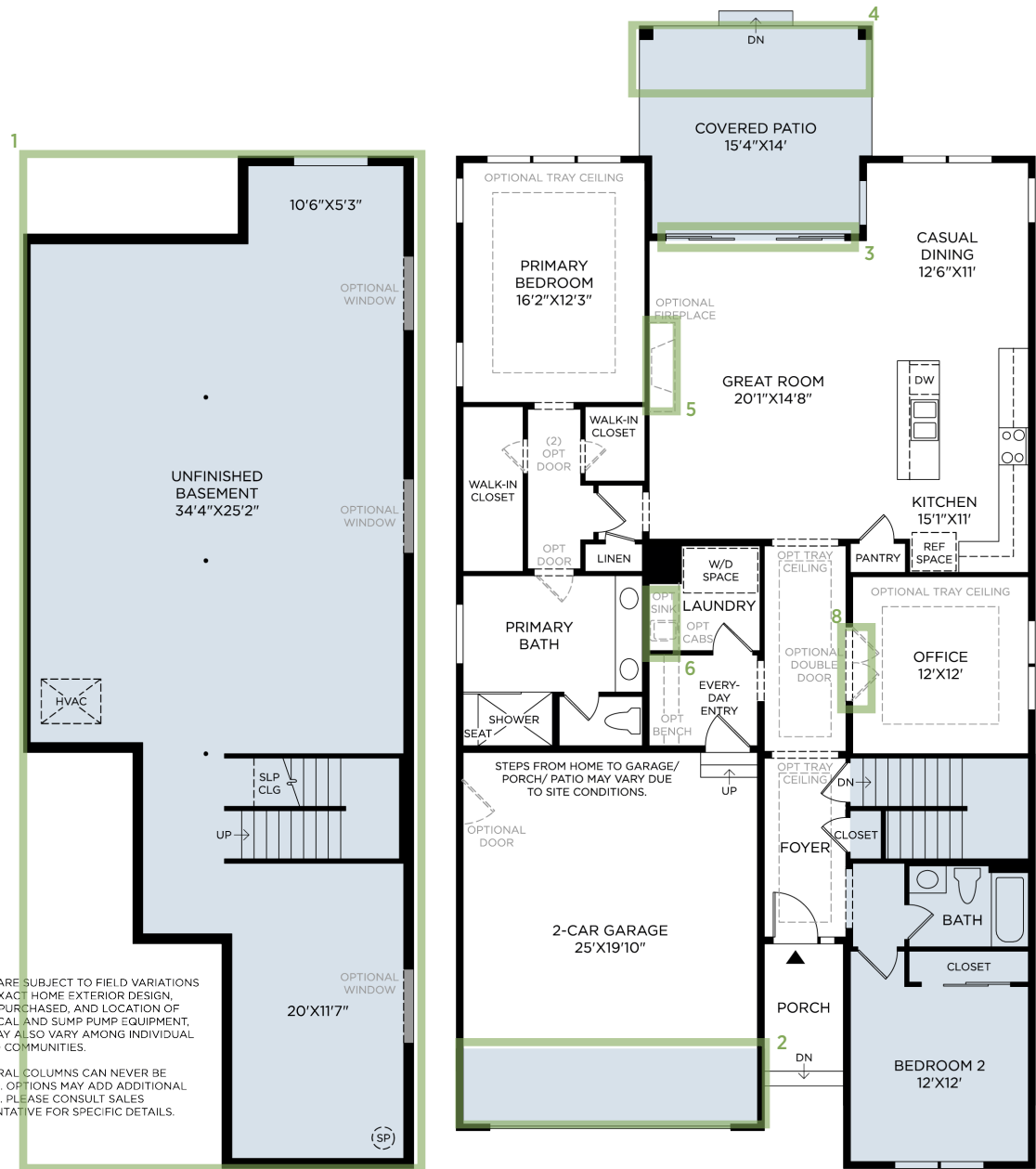
# Designer Appointed Features | ARCHITECTURAL SELECTIONS

Designer Appointed Features are home details and finishes curated by the talented design professionals responsible for the distinctive looks found in our model homes.

- 1 ADD PARTIAL BASEMENT TO CRAWLSPACE**  
PC263100
- 2 EXTEND GARAGE DEPTH**  
PC263061
- 3 MULTI-SLIDE BI-PART DOOR**  
PC026804
- 4 EXPANDED REAR PATIO**  
PC140
- 5 GAS FIREPLACE**  
PC629
- 6 LAUNDRY ROOM SINK**  
PC048385
- 7 PRIMARY BATH FREE-STANDING TUB 5.5'**  
PC048404 (not shown)
- 8 FRENCH DOORS AT STUDY**  
PC166

NOTE:  
DESIGNS ARE SUBJECT TO FIELD VARIATIONS  
DUE TO EXACT HOME EXTERIOR DESIGN,  
OPTIONS PURCHASED, AND LOCATION OF  
MECHANICAL AND SUMP PUMP EQUIPMENT,  
WHICH MAY ALSO VARY AMONG INDIVIDUAL  
LOTS AND COMMUNITIES.

STRUCTURAL COLUMNS CAN NEVER BE  
REMOVED. OPTIONS MAY ADD ADDITIONAL  
COLUMNS. PLEASE CONSULT SALES  
REPRESENTATIVE FOR SPECIFIC DETAILS.



# Designer Appointed Features | EXTERIOR SELECTIONS

Designer Appointed Features are home details and finishes curated by the talented design professionals responsible for the distinctive looks found in our model homes.

## 1 FRONT DOOR

### ThermaTru

To Match Exterior Color Package | Matte Black Hardware

1





# Designer Appointed Features | INTERIOR SELECTIONS

Designer Appointed Features are home details and finishes curated by the talented design professionals responsible for the distinctive looks found in our model homes.

## 1 WALL PAINT

Sherwin Williams  
SW7005 Pure White | Walls/Ceiling/Trim

## 2 INTERIOR DOORS

Raised 2-Panel  
SW7005 Pure White | 8' Hollow Core

## 3 INTERIOR DOOR HANDLES

Kwikset - Halifax  
Matte Black | Levers

## 4 FLOORING-CARPET

Shaw - Golden Sands  
Pearl | ½" 8LB Pad

## 5 FLOORING-WATERPROOF CORE

Shaw - Home  
Genuine Greige | 9" Plank

## 6 TRIM

Flatline  
SW7005 Pure White | 3-1/4" Case, 5" Base

## 7 FIREPLACE - TILE

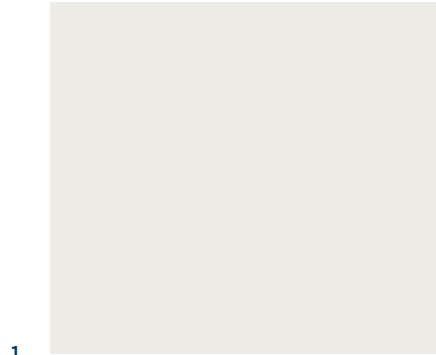
Arizona Tile - Shibusa  
Bianco | 12x24 Horizontal Straight

## 8 FIREPLACE - MANTLE

Stain Weathered Teak

## 9 LIGHTING - FOYER

Black Finish  
Etched White Glass | Quantity 1



1



2



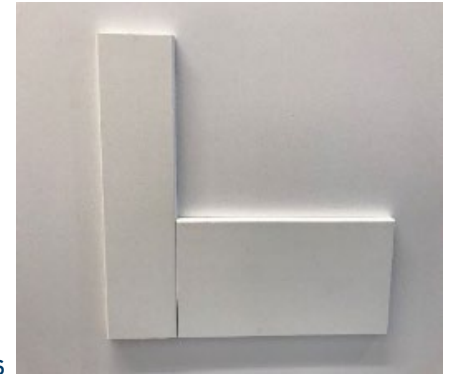
3



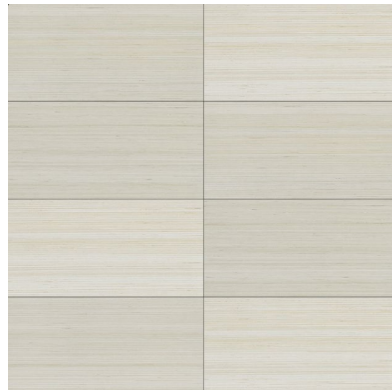
4



5



6



7



8



9

# Designer Appointed Features | KITCHEN

Designer Appointed Features are home details and finishes curated by the talented design professionals responsible for the distinctive looks found in our model homes.

## 1 CABINETS

Mastercraft - Haxton  
White Icing | Semi-Full Overlay

## 2 HARDWARE

Pulls on Doors and Drawers  
Matte Black

## 3 COUNTERTOP

Arizona Tile - Quartz  
Citrine | 3CM Flat Polished Edge

## 4 BACKSPLASH

Arizona Tile - Paloma  
Pumice Glossy | 4x8 Long Hex

## 5 FLOORING-WATERPROOF CORE

Shaw - Home  
Genuine Greige | 9" Plank

## 6 FAUCET

Kohler - Crue  
Matte Black | Single-Hole, Pull-Down

## 7 SINK

Kohler - Vault  
Stainless Steel | Undermount

## 8 LIGHTING-ISLAND

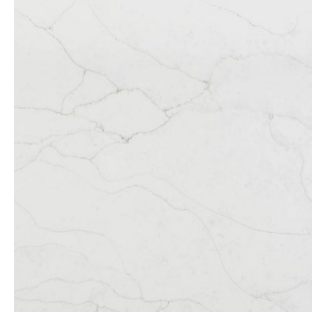
Matte Black  
Clear Glass | Quantity 3



2



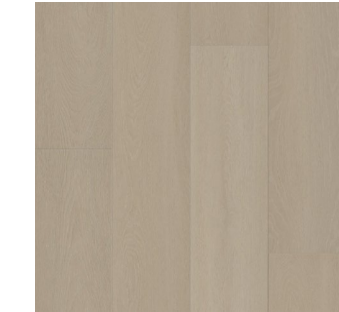
3



4



1



6



7



8



# Designer Appointed Features | KITCHEN APPLIANCES

Designer Appointed Features are home details and finishes curated by the talented design professionals responsible for the distinctive looks found in our model homes.

## 1 COOKTOP

**Kitchenaid**

Stainless Steel | 5-Burner Gas Cooktop

## 2 VENT HOOD

**Kitchenaid**

Stainless Steel | 36" Under Cabinet Hood

## 3 WALL OVEN

**Kitchenaid**

Stainless Steel | 30" Combination Microwave/Wall Oven

## 4 DISHWASHER

**Kitchenaid**

Stainless Steel | 24" Built In



1



2



3



4

# Designer Appointed Features | PRIMARY BATHROOM

Designer Appointed Features are home details and finishes curated by the talented design professionals responsible for the distinctive looks found in our model homes.

## 1 VANITY CABINETS

Mastercraft - Haxton  
White Icing | Semi-Full Overlay

## 2 HARDWARE

Pulls on Doors and Drawers  
Matte Black

## 3 COUNTERTOP

Arizona Tile - Quartz  
Citrine | 3CM Flat Polished Edge

## 4 FAUCET

Kohler - Hint  
Matte Black | 8" Widespread

## 5 SINK

Kohler - Caxton  
White | Undermount

## 6 SHOWER TILE—WALLS

Arizona Tile – 3D Blade  
White | 12x22 Horizontal Straight

## 7 SHOWER TILE—FLOOR

Arizona Tile - Borgo  
Caldo | 2x2 Mosaic

## 8 FLOORING - TILE

Arizona Tile - Borgo  
Caldo | 12x24 1/3 Offset

## 9 SHOWER FIXTURE

Kohler - Hint  
Matte Black

## 10 TUB

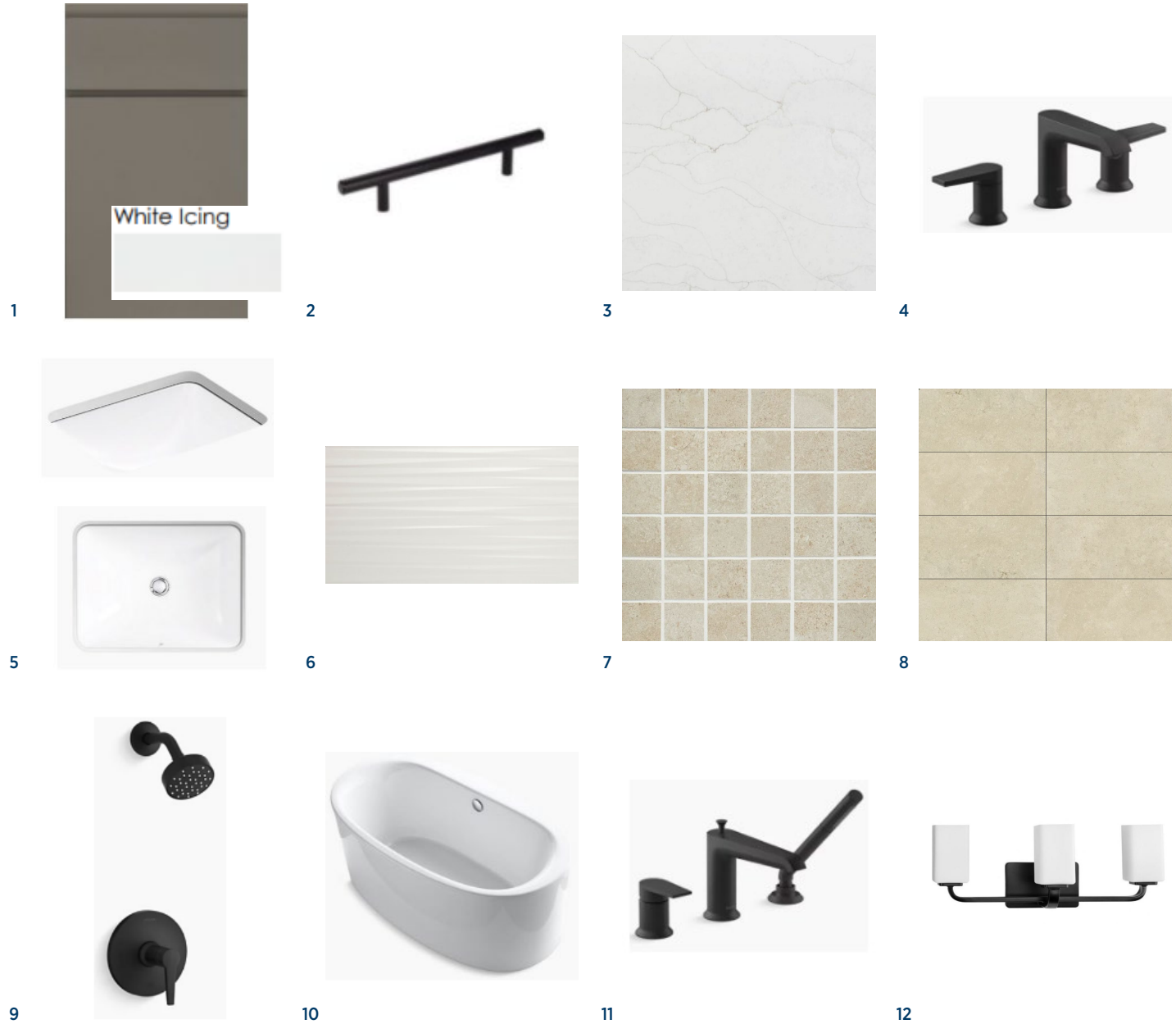
Kohler - Sunstruck  
White | 66x36 Freestanding

## 11 TUB FIXTURE

Kohler - Hint  
Matte Black

## 12 LIGHTING

Matte Black  
Etched Opal Glass | Quantity 2





# Designer Appointed Features | SECONDARY BATHROOM

Designer Appointed Features are home details and finishes curated by the talented design professionals responsible for the distinctive looks found in our model homes.

## 1 VANITY CABINETS

Mastercraft - Haxton  
White Icing | Semi-Full Overlay

## 2 HARDWARE

Pulls on Doors and Drawers  
Matte Black

## 3 COUNTERTOP

Arizona Tile - Quartz  
Citrine | 3CM Flat Polished Edge

## 4 FAUCET

Kohler - Hint  
Matte Black | Single Lever Handle

## 5 SINK

Kohler - Caxton  
White | Undermount

## 6 TUB/SHOWER TILE—WALLS

Arizona Tile - Paloma  
Cotton Glossy | 3x6 Vertical Straight

## 7 TUB

Sterling - Performa  
White | 60x29

## 8 FLOORING - TILE

Arizona Tile - Borgo  
Caldo | 12x24 1/3 Offset

## 9 TUB/SHOWER FIXTURE

Kohler - Hint  
Matte Black

## 10 TOILET

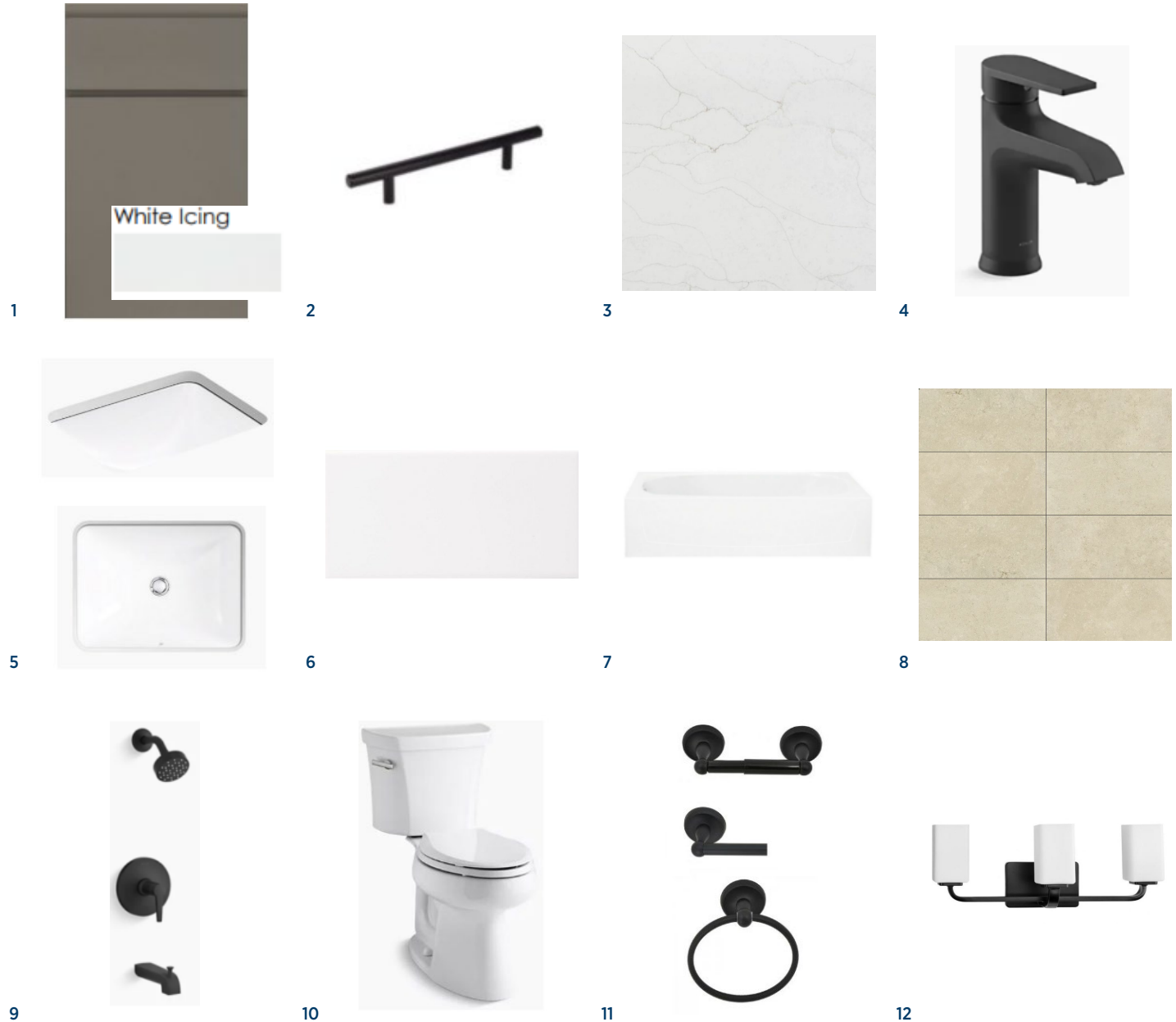
Kohler - Highline  
White | Comfort Height

## 11 BATH ACCESSORIES

Matte Black

## 12 LIGHTING

Matte Black  
Etched Opal Glass | Quantity 1



# Designer Appointed Features | LAUNDRY

Designer Appointed Features are home details and finishes curated by the talented design professionals responsible for the distinctive looks found in our model homes.

## 1 CABINETS

Mastercraft - Haxton  
White Icing | Semi-Full Overlay

## 2 HARDWARE

Pulls on Doors and Drawers  
Matte Black

## 3 COUNTERTOP

Arizona Tile - Quartz  
Citrine | 3CM Flat Polished Edge

## 4 FLOORING - TILE

Arizona Tile - Borgo  
Caldo | 12x24 1/3 Offset

## 5 SINK

Sterling - Latitude  
White | Self Rimming

## 6 FAUCET

Kohler - Jolt  
Polished Chrome

1



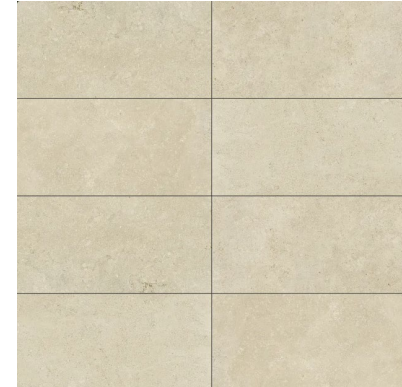
2



3



4



5



6

