

*Toll Brothers*  
AMERICA'S LUXURY HOME BUILDER®



VALLE NORTE



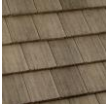
# Residence Four

HOME SITE 67 | 2121 W SONORAN DESERT DR. | PHOENIX, AZ 85085

# Designer Appointed Features | EXTERIOR SELECTIONS

Designer Appointed Features are home details and finishes curated by the talented design professionals responsible for the distinctive looks found in our model homes.



- |   |   |   |   |   |   |   |  |   |
|---|---|---|---|---|---|---|--|---|
| 1 |  | <b>PRIMARY</b><br>Agreeable Gray<br>SW 7029 | 3 |  | <b>FRONT DOOR</b><br>Grays Harbor<br>SW 6236    | 5 |  | <b>ACCENT</b><br>Repose Gray<br>SW 7015                 |
| 2 |  | <b>TRIM</b><br>Gauntlet Gray<br>SW 7019     | 4 |  | <b>GARAGE DOOR</b><br>Agreeable Gray<br>SW 7029 | 6 |  | <b>ROOF</b><br>Brown Range - Ponderosa<br>Eagle Roofing |

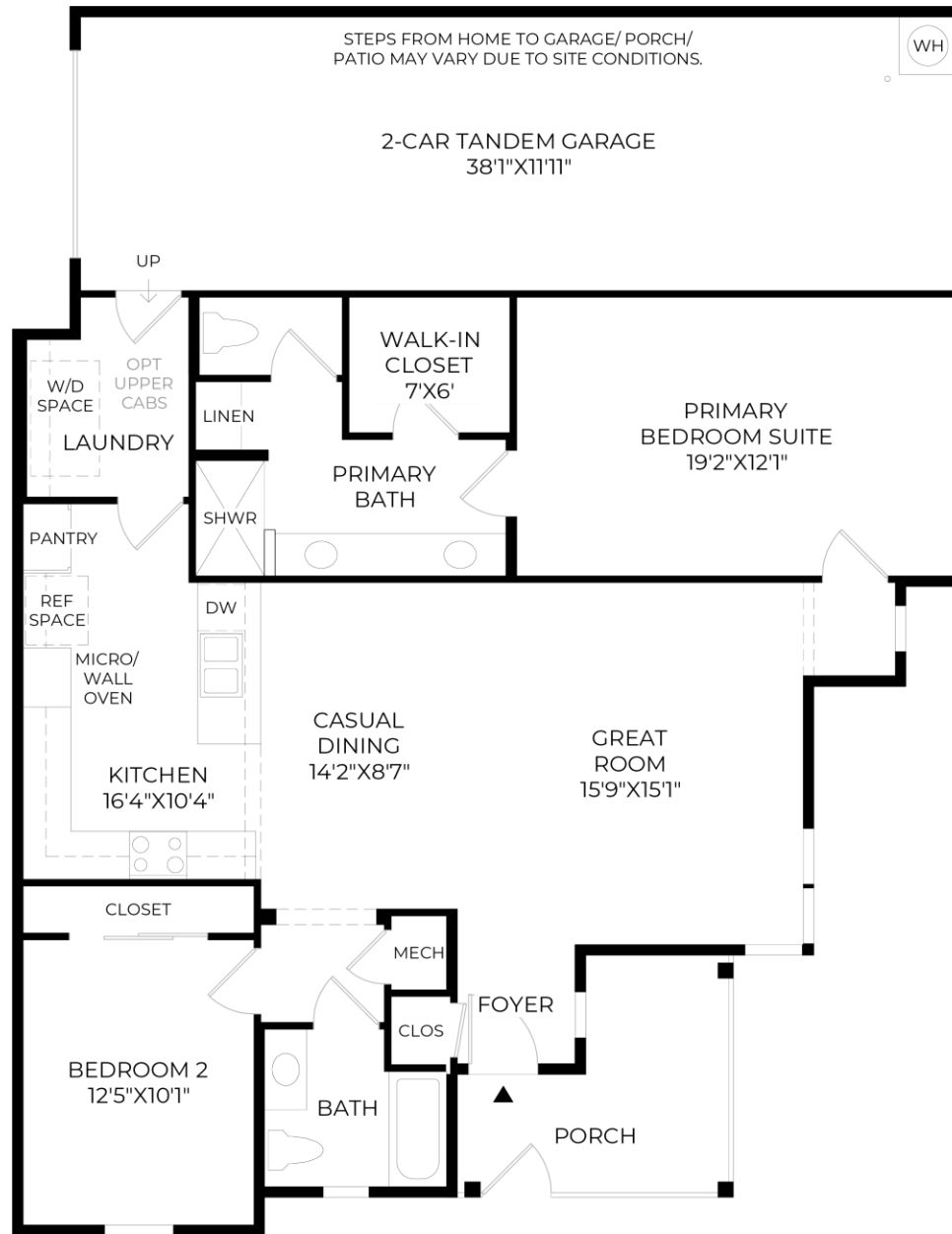
VALLE NORTE | RESIDENCE FOUR  
HOME SITE 67 | 2121 W SONORAN DESERT DR. | PHOENIX, AZ 85085

Photographs, renderings, and floor plans are for representational purposes only and may not reflect the exact features or dimensions of your home; actual product may differ. All dimensions are subject to field variations. Prices and offers subject to change without notice. This is not an offering where prohibited by law. Not all images may be shown. See online or onsite Sales Consultants for details.



# Designer Appointed Features | ARCHITECTURAL SELECTIONS

Designer Appointed Features are home details and finishes curated by the talented design professionals responsible for the distinctive looks found in our model homes.



# Designer Appointed Features | INTERIOR SELECTIONS

Designer Appointed Features are home details and finishes curated by the talented design professionals responsible for the distinctive looks found in our model homes.

## 1 WALL PAINT

**Sherwin Williams**

Alabaster

## 2 INTERIOR DOORS

**Executive Door Co. - Hollow  
Core MDF**

Alabaster | 2 Panel

## 3 INTERIOR DOOR HANDLES

**Kwikset - Tustin**

Polished Chrome

## 4 FLOORING-CARPET

**Shaw - Golden Sands**

Nature Walk | 8lb. Pad

## 5 FLOORING-BATHROOM & LAUNDRY TILE

**Arizona Tile - Futura**

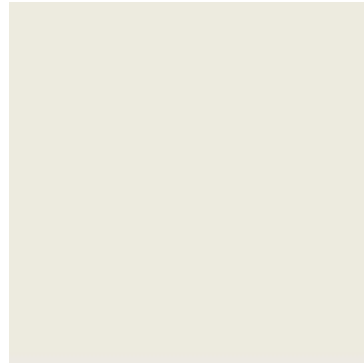
Beige | 12x24 33% Stairstep

## 6 FLOORING-LVP

**Shaw - Domain**

Jerome Oak | 7x48 Random Stagger

1



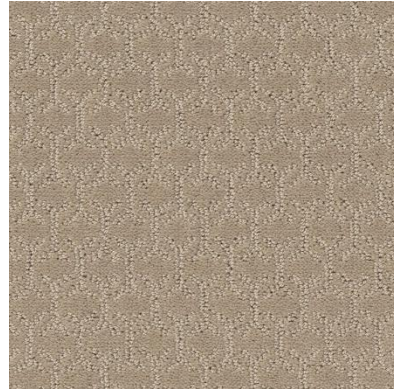
2



3



4



5



6



# Designer Appointed Features | KITCHEN

Designer Appointed Features are home details and finishes curated by the talented design professionals responsible for the distinctive looks found in our model homes.

## 1 CABINETS - PERIMETER

### Mid Continent - Dapper

White | Full Overlay Slab Drawer

## 3 CABINETS - ISLAND

### Mid Continent - Dapper

Retreat | Full Overlay

## 3 CABINET HARDWARE

### Amerock - Monument Pulls

Champagne Bronze | 6"

## 4 COUNTERTOP

### Arizona Tile - Quartz

New Venatino Beige | 1 1/2" Edge

## 5 BACKSPLASH

### Arizona Tile - S Series

Soft Sage | Scallop Mosaic

## 6 FLOORING-LVP

### Shaw - Domain

Jerome Oak | Random Stagger

## 7 FAUCET

### Kohler - Jolt

Polished Chrome | Pull down sprayer

## 8 SINK

### Kohler - Vault

Stainless | Single Bowl Undermount



1



2



3



4



5



6



7



8

# Designer Appointed Features | KITCHEN APPLIANCES

Designer Appointed Features are home details and finishes curated by the talented design professionals responsible for the distinctive looks found in our model homes.

## 36" ELECTRIC COOKTOP, COMBO OVEN, HOOD, DISHWASHER

Phase 1 Option # PC112991/INCLUDED  
Phase 2 Option # APKK2005/INCLUDED  
(Envision APKK2005-1)

- 1 36" Convertible Under-Cabinet Hood  
UXT5536AAS**
  - 400 CFM exhaust rating
  - Dual-halogen worksurface
- 2 36" Electric Ceramic Glass Cooktop with  
Dual Radiant Element  
WCE55US6HB**
  - Easy-wipe ceramic glass cooktop
  - Warm zone element
  - 5-element cooktop
- 3 Combo Wall Oven with Air Fry When  
Connected—Smart Wall Oven  
WOEC5030LZ**
  - 6-in-1 wall oven with fan convection
  - 6.4 cu. ft. total capacity
  - Air-fry mode when connected
  - Automatic feature updates when connected
- 4 Large-Capacity Dishwasher with Third Rack  
WDT751SAPZ**
  - 47 dBA
  - Stainless steel tub—5 cycles
  - 5 options
  - Top control



1



2



3

# Designer Appointed Features | PRIMARY BATHROOM

Designer Appointed Features are home details and finishes curated by the talented design professionals responsible for the distinctive looks found in our model homes.

## 1 VANITY CABINETS

### Mid Continent - Dapper

White | Full Overlay

## 2 COUNTERTOP & SINK

### Cultured Marble

White | Square Integrated Sinks

## 3 FAUCET

### Kohler - Bellera

Polished Chrome | Widespread

## 4 SHOWER TILE—WALLS

### Arizona Tile - 3D Series

White Blade | 12x22 Horizontal Straight Stack

## 5 SHOWER TILE—FLOOR

### Arizona Tile - Futura

Beige | 2x2

## 6 SHOWER FIXTURES

### Kohler - Bellera

Polished Chrome

## 7 TOILET

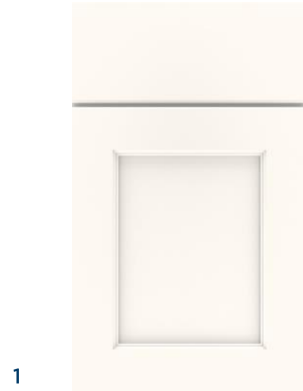
### Kohler - Highline

White | Comfort Height

## 8 BATH ACCESSORIES

### Kohler - Bellera

Polished Chrome



# Designer Appointed Features | SECONDARY BATHROOM

Designer Appointed Features are home details and finishes curated by the talented design professionals responsible for the distinctive looks found in our model homes.

## 1 VANITY CABINETS

### Mid Continent - Dapper

White | Full Overlay

## 2 COUNTERTOP & SINK

### Cultured Marble

White | Square Integrated Sinks

## 3 FAUCET

### Kohler - Bellera

Polished Chrome | Widespread

## 4 SHOWER SURROUNDS

### Cultured Marble

White

## 5 TUB

### Kohler - Ensemble

White | 5'

## 6 SHOWER FIXTURES

### Kohler - Bellera

Polished Chrome

## 7 TOILET

### Kohler - Highline

White | Comfort Height

## 8 BATH ACCESSORIES

### Kohler - Bellera

Polished Chrome

