

*Toll Brothers*  
AMERICA'S LUXURY HOME BUILDER®



PRESERVE AT SAN TAN - PAPAGO COLLECTION

# Chapin Ranch

HOME SITE 1153 | 35826 N FLINT DR | SAN TAN VALLEY, AZ 85144

# Designer Appointed Features | EXTERIOR SELECTIONS

Designer Appointed Features are home details and finishes curated by the talented design professionals responsible for the distinctive looks found in our model homes.



- |   |   |   |   |  |
|---|---|---|---|--|
| <p><b>1</b>  <b>STUCCO</b><br/>Agreeable Gray<br/>SW 7029</p>        | <p><b>3</b>  <b>FRONT DOOR</b><br/>Urbane Bronze<br/>SW 7048</p> | <p><b>5</b>  <b>MASONRY</b><br/>Carbon - Handmade<br/>Cultured Stone</p>  | <p><b>7</b>  <b>ROOF</b><br/>Sierra Madre 5503<br/>Eagle Roofing</p> | <p><b>9</b>  <b>CORBELS / POSTS</b><br/>Urbane Bronze<br/>SW 7048</p> |
| <p><b>2</b>  <b>SIDING &amp; TRIM</b><br/>Warm Stone<br/>SW 7032</p> | <p><b>4</b>  <b>GARAGE DOOR</b><br/>Warm Stone<br/>SW 7032</p>   | <p><b>6</b>  <b>SOFFIT &amp; FASCIA</b><br/>Urbane Bronze<br/>SW 7048</p> | <p><b>8</b>  <b>SHUTTERS</b><br/>Urbane Bronze<br/>SW 7048</p>       | <p><b>10</b>  <b>WINDOWS</b><br/>White</p>                            |

PRESERVE AT SAN TAN | PAPAGO COLLECTION | CHAPIN RANCH  
HOME SITE 1153 | 35826 N FLINT DR | SAN TAN VALLEY, AZ 85144

Photographs, renderings, and floor plans are for representational purposes only and may not reflect the exact features or dimensions of your home. All dimensions are subject to field variations. Prices and offers subject to change without notice. This is not an offering where prohibited by law. Images are for representational purposes only and actual product may differ. Not all images may be shown. See online or onsite sales consultants for details.

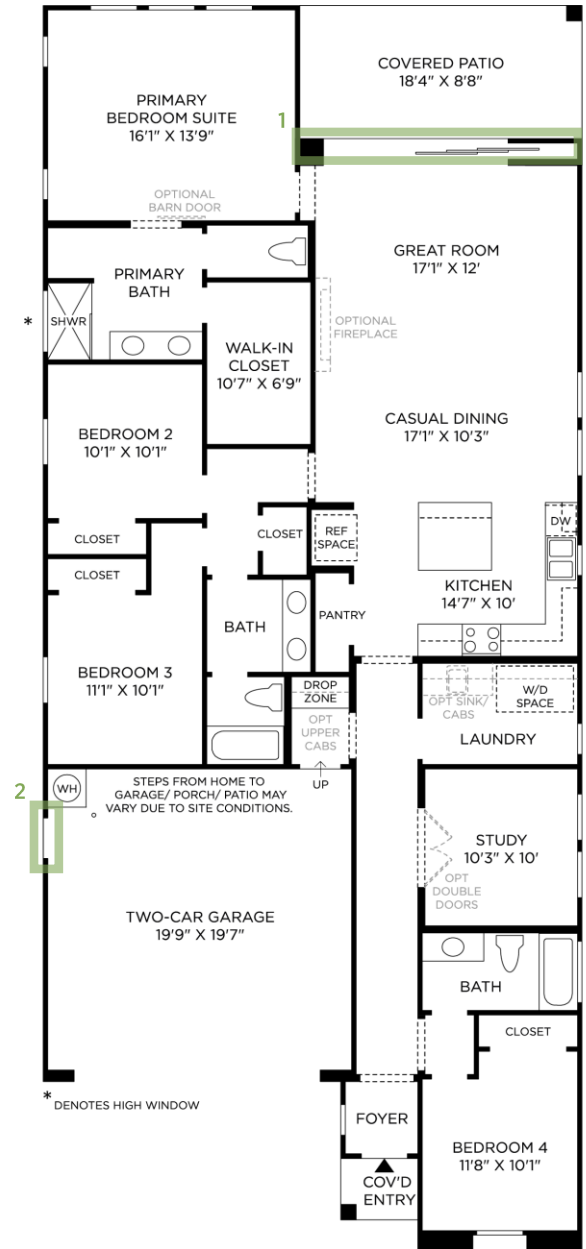


# Designer Appointed Features | STRUCTURAL OPTIONS

Designer Appointed Features are home details and finishes curated by the talented design professionals responsible for the distinctive looks found in our model homes.

## 1 MULTI-PANEL POCKET DOORS

## 2 ADDITIONAL EXTERIOR DOOR



# Designer Appointed Features | KITCHEN APPLIANCES

Designer Appointed Features are home details and finishes curated by the talented design professionals responsible for the distinctive looks found in our model homes.

## 1 VENT HOOD & MICROWAVE

### Kitchenaid

Stainless/Black | Flush Mount OTR Convection Microwave

## 2 RANGE & OVEN

### Kitchenaid

Stainless/Black | 30in 5 Burner Gas Slide In Convection Range

## 3 DISHWASHER

### Kitchenaid

Stainless/Black | Built In Print Shield Finish

## 4 REFRIGERATOR

### Kitchenaid

Stainless | Built In Print Shield Finish

1



2



3



4



# Designer Appointed Features | INTERIOR SELECTIONS

Designer Appointed Features are home details and finishes curated by the talented design professionals responsible for the distinctive looks found in our model homes.

## 1 WALL PAINT

**Sherwin Williams**

Alabaster |

## 2 INTERIOR DOORS

**Executive Door Co. - Hollow Core**

Alabaster | 2 Panel

## 3 INTERIOR DOOR HANDLES

**Kwikset - Tustin**

Polished Chrome |

## 4 FLOORING-CARPET

**Shaw - Enchantment**

Natural Wood | 8lb. Pad

## 5 FLOORING-BATHROOM & LAUNDRY TILE

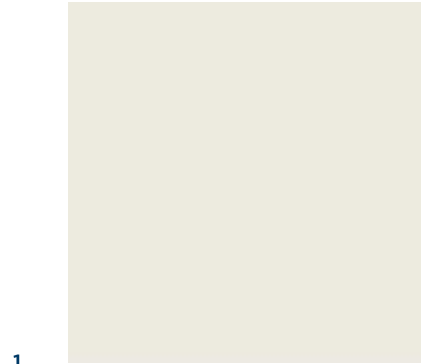
**Arizona Tile - Futura**

Beige | 12x24 Straight Stack

## 6 FLOORING-LVP

**Shaw - Home**

Cozy Taupe |



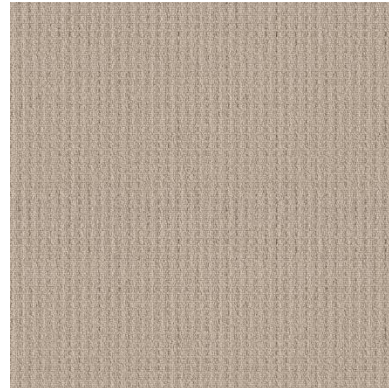
1



2



3



4



5



6

# Designer Appointed Features | KITCHEN

Designer Appointed Features are home details and finishes curated by the talented design professionals responsible for the distinctive looks found in our model homes.

## 1 CABINETS

### Timberlake – Barren

Maple Slate | Standard Overlay-Slab Drawer

## 2 COUNTERTOP-ISLAND

### Arizona Tile - Marble

Fantasy Brown Satin | 1 ½" Edge

## 3 COUNTERTOP-PERIMETER

### Arizona Tile - Quartz

New Venatino Beige | 1 ½" Edge

## 4 BACKSPLASH

### Arizona Tile – Glam

Beige Glossy | 2x9 50% Stagger

## 5 FLOORING-LVP

### Shaw – Home

Cozy Taupe |

## 6 FAUCET

### Kohler - Crue

Vibrant Stainless |

## 7 SINK

### Kohler - Vault

Stainless | Single Bowl Undermount



# Designer Appointed Features | PRIMARY BATHROOM

Designer Appointed Features are home details and finishes curated by the talented design professionals responsible for the distinctive looks found in our model homes.

## 1 VANITY CABINETS

### Timberlake – Barren

Maple Slate | Standard Overlay – Slab Drawer

## 2 COUNTERTOP & INTEGRATED SINK

### Cultured Marble

White | Square Sink

## 3 FAUCET

### Kohler - Bellera

Polished Chrome | Widespread

## 4 SHOWER TILE—WALLS

### Arizona Tile – Glam

Beige Glossy | 2x9 Horizontal Straight Stack

## 5 SHOWER TILE—FLOOR

### Arizona Tile - Futura

Beige | 2x2 Mosaic

## 6 SHOWER FIXTURES

### Kohler - Bellera

Polished Chrome |

## 7 TOILET

### Kohler - Highline

White | Comfort Height

## 8 BATH ACCESSORIES

### Kohler - Bellera

Polished Chrome |



# Designer Appointed Features | SECONDARY BATHROOM

Designer Appointed Features are home details and finishes curated by the talented design professionals responsible for the distinctive looks found in our model homes.

## 1 VANITY CABINETS

### Timberlake – Barren

Maple Slate | Standard Overlay – Slab Drawer

## 2 COUNTERTOP & INTEGRATED SINK

### Cultured Marble

White | Square Sink

## 3 FAUCET

### Kohler - Bellera

Polished Chrome | Widespread

## 4 SHOWER SURROUNDS

### Medley Walls

White |

## 5 TUB

### Kohler - Ensemble

White | 5'

## 6 SHOWER FIXTURES

### Kohler - Bellera

Polished Chrome |

## 7 TOILET

### Kohler - Highline

White | Comfort Height

## 8 BATH ACCESSORIES

### Kohler - Bellera

Polished Chrome |

