

*Toll Brothers*  
AMERICA'S LUXURY HOME BUILDER®



PRESERVE AT SAN TAN - PERALTA COLLECTION

# Eastover Ranch






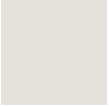




HOME SITE 1055 | 3677 W MARBLE ST | SAN TAN VALLEY, AZ 85144



# Designer Appointed Features | EXTERIOR SELECTIONS

Designer Appointed Features are home details and finishes curated by the talented design professionals responsible for the distinctive looks found in our model homes.



1		<b>STUCCO FIELD</b> Origami White SW 7636	3		<b>FRONT DOOR</b> Caviar SW 6990	5		<b>STONE</b> Tenley Brick Nori Cultured Stone	7		<b>ROOF</b> Ponderosa Sierra Madre Eagle Roofing	9		<b>SOFFIT, FASCIA</b> Caviar SW 6990
2		<b>STUCCO TRIM, SHUTTERS &amp; VENTS</b> Origami White SW 7636	4		<b>GARAGE DOOR</b> Peppercorn SW 7674	6		<b>ROOF COMPLEMENTARY COLOR</b> Iron Ore SW 7069	8		<b>WINDOWS</b> Adobe	10		<b>SIDING &amp; TRIM</b> Peppercorn SW 7674

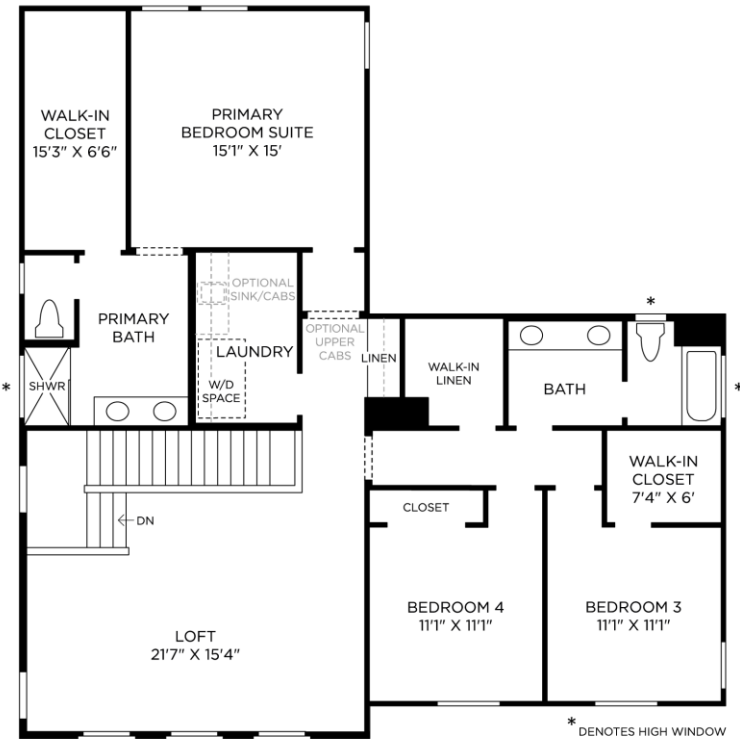
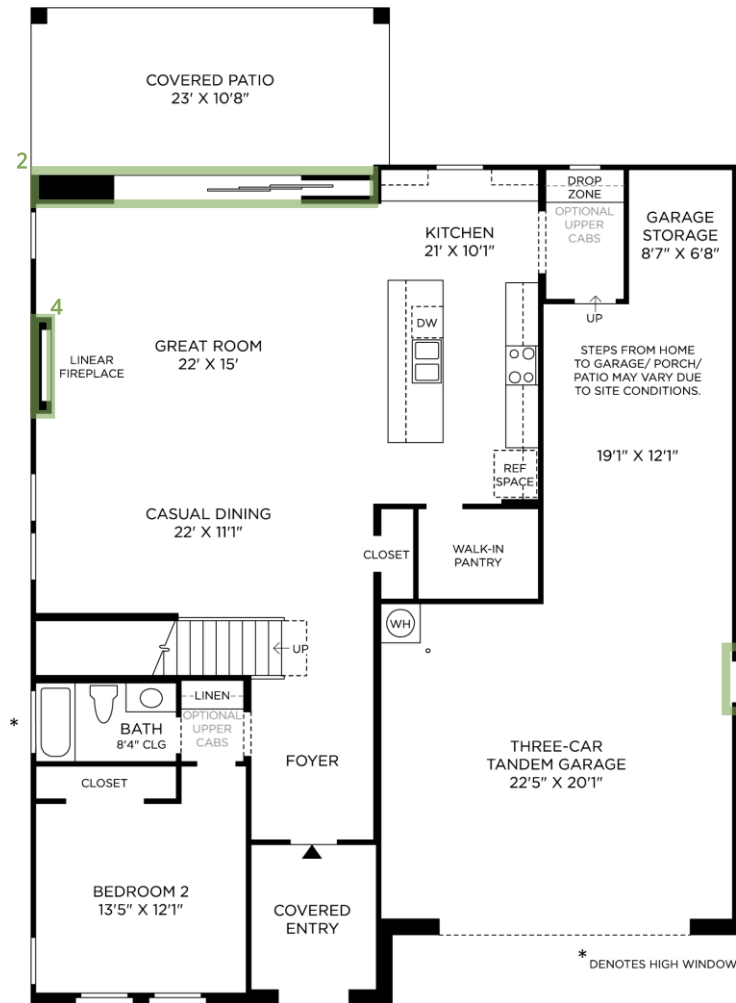
PRESERVE AT SAN TAN – PERALTA COLLECTION | EASTOVER RANCH  
HOME SITE 1055 | 3677 W MARBLE ST | SAN TAN VALLEY, AZ 85144

Photographs, renderings, and floor plans are for representational purposes only and may not reflect the exact features or dimensions of your home. All dimensions are subject to field variations. Prices and offers subject to change without notice. This is not an offering where prohibited by law. Images are for representational purposes only and actual product may differ. Not all images may be shown. See online or onsite sales consultants for details.



# Designer Appointed Features | STRUCTURAL OPTIONS

Designer Appointed Features are home details and finishes curated by the talented design professionals responsible for the distinctive looks found in our model homes.



1 ADDITIONAL EXTERIOR DOOR

3 TANKLESS WATER HEATER  
(not shown)

5 SHOWER STALL ILO TUB  
(not shown)

2 MULTI-PANEL POCKET DOORS

4 ELECTRIC FIREPLACE 55" SCION