

Toll Brothers
AMERICA'S LUXURY HOME BUILDER®



PRESERVE AT SAN TAN – SONORAN COLLECTION

Monetta Farmhouse

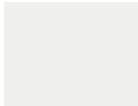
HOME SITE 898 | 3946 W TALC DR | SAN TAN VALLEY, AZ 85144

Designer Appointed Features | EXTERIOR SELECTIONS

Designer Appointed Features are home details and finishes curated by the talented design professionals responsible for the distinctive looks found in our model homes.



1



STUCCO FIELD
SW 7006 Extra White

3



FRONT DOOR
SW 6510 Loyal Blue

5



BRICK
Coronado Stone
Wirecut Brick-Wolf Grey

7



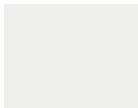
ROOF
Eagle Roofing
Ponderosa
5503 Sierra Madre

9



**ROOF
COMPLEMENTARY
COLOR**
SW 7069 Iron Ore

2



**TRIM/SIDING/
BOARD & BATTEN**
SW 7006 Extra White

4



GARAGE DOOR
SW 7006 Extra White

6



SHUTTERS
SW 7674 Peppercorn

8



METAL ROOF
Custom Bilt Metals
Black

10



WINDOWS
Black

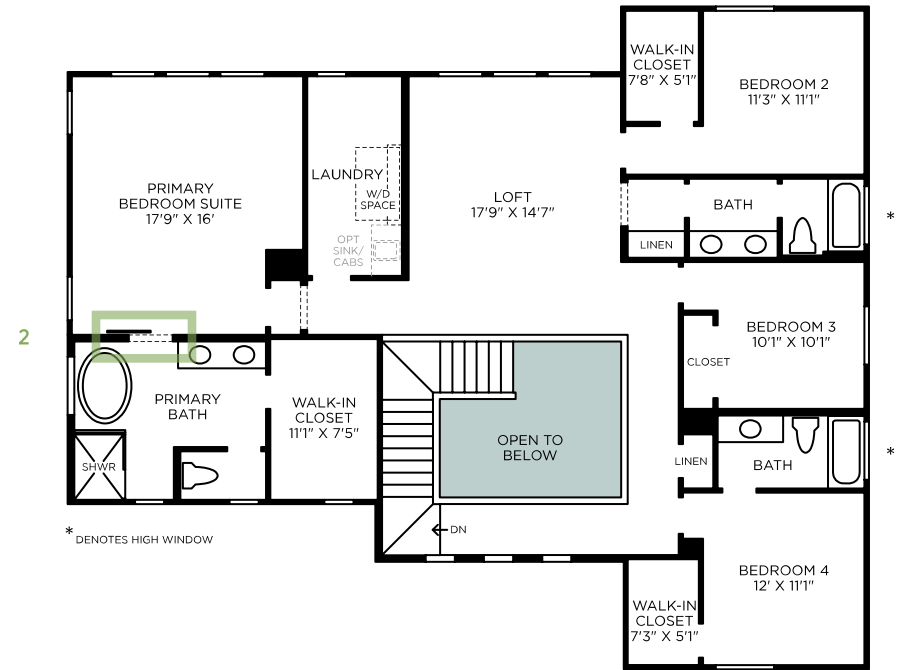
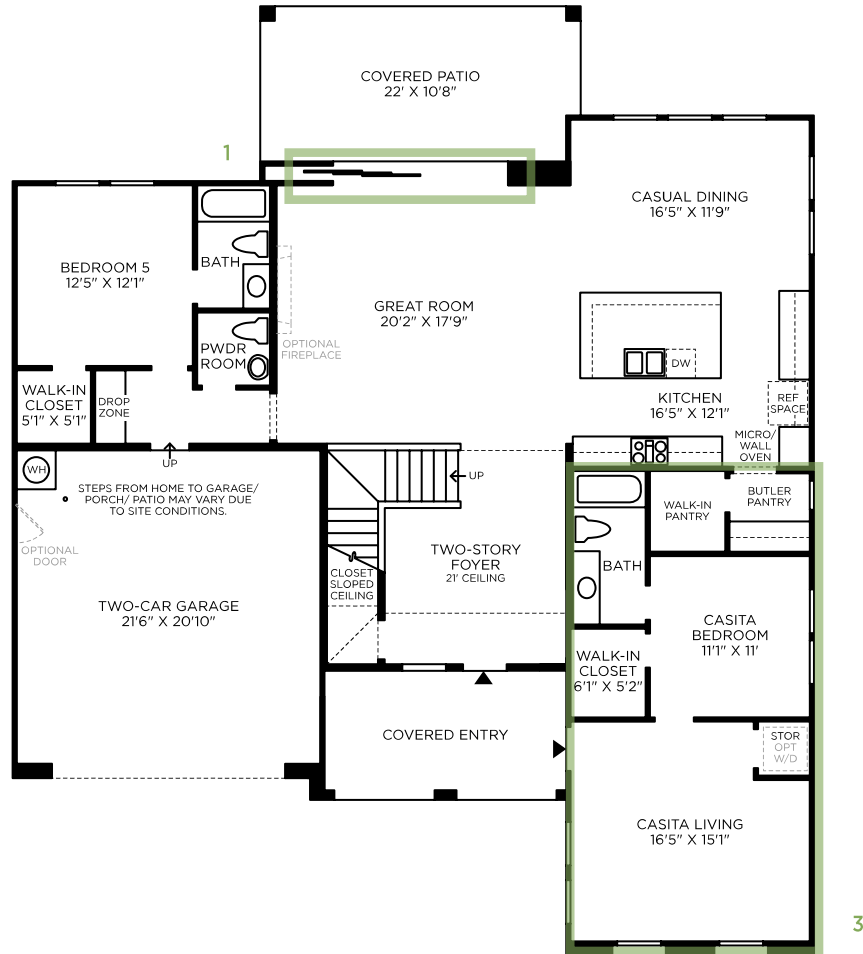
PRESERVE AT SAN TAN – SONORAN COLLECTION | MONETTA FARMHOUSE
HOME SITE 898 | 3946 W TALC DR | SAN TAN VALLEY, AZ 85144

Prices and offers subject to change without notice. This is not an offering where prohibited by law. Images are for representational purposes only and actual product may differ. Not all images may be shown. See online or onsite sales consultants for details. 9/01/22



Designer Appointed Features | STRUCTURAL OPTIONS

Designer Appointed Features are home details and finishes curated by the talented design professionals responsible for the distinctive looks found in our model homes.



1 MULTI-PANEL POCKET DOORS - 12'X8'

Option code: 026085

2 INTERIOR SLIDING BARN DOOR TO PRIMARY BATH

Option code: 026401

3 GUEST CASITA ADDITION

Option code: 031

4 SHOWER STALL IN LIEU OF TUB (NOT SHOWN)

Option code: 354

Designer Appointed Features | INTERIOR SELECTIONS

Designer Appointed Features are home details and finishes curated by the talented design professionals responsible for the distinctive looks found in our model homes.

1 WALL PAINT

Sherwin Williams

Alabaster | Wall & Ceiling Color/Doors & Trim will be semi-gloss *Ceilings and walls are flat*

2 INTERIOR DOORS

Lincoln

White | 8' Door / Hollow Core 1-3/8", Smooth finish

3 INTERIOR DOOR HANDLES

Kwikset Tustin

Iron Black Finish | Whole home interior door handles have been upgraded

4 FLOORING-CARPET

Shaw Emerald Isle

Silver | 10# Carpet padding / Carpet Level 2 upgrade at Hard surfaces throughout

5 FLOORING-LUXURY VINYL PLANK

Gemcore Topaz

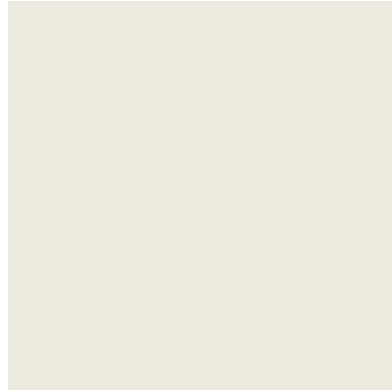
Bayside | Hard Surface throughout

6 WINDOW COVERINGS

White Blinds

2" Faux White Blinds | Whole House

1



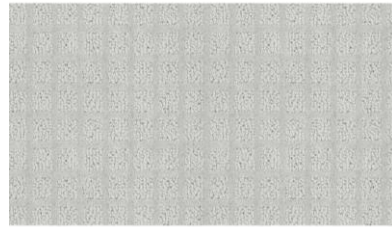
2



3



4



5



6



Designer Appointed Features | KITCHEN

Designer Appointed Features are home details and finishes curated by the talented design professionals responsible for the distinctive looks found in our model homes.

1 CABINETS

Timberlake Sonoma

Linen | Kitchen and remainder of home cabinets

2 HARDWARE

Contemporary Pull

Verona Bronze | Applied on kitchen and remainder of home cabinetry

3 KITCHEN ISLAND COLOR UPGRADE

Timberlake Stone

Kitchen Island will be painted a different color from the perimeter of the kitchen, door style remains same as the perimeter.

4 COUNTERTOP

Quartz

Carrara Borolla

5 FLOORING-LUXURY VINYL PLANK

Gemcore Topaz

Bayside | Hard Surface throughout

6 FAUCET

Kohler Crue

Matte Black

7 SINK

Kohler Whitehaven

White | Undermounted cast iron, with a short apron

1



2



3



4



5



6



7



Designer Appointed Features | KITCHEN APPLIANCES

Designer Appointed Features are home details and finishes curated by the talented design professionals responsible for the distinctive looks found in our model homes.

1 RANGE

KitchenAid

Stainless Steel | 36" Dual Fuel Rangetop

2 VENT HOOD

KitchenAid

Stainless | 36in Wall Mount Hood

3 MICROWAVE

KitchenAid

Stainless | Built in Microwave

4 DISHWASHER

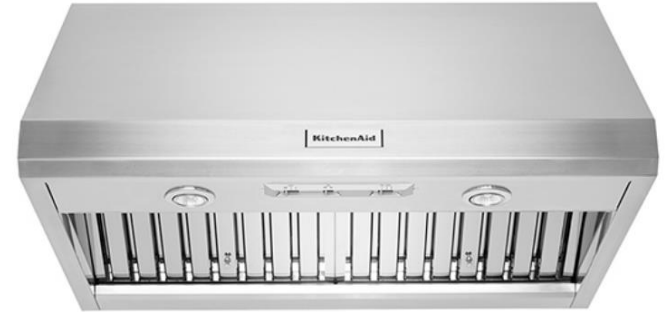
KitchenAid

Stainless | Printshield Dishwasher

1



2



3



4



Designer Appointed Features | POWDER ROOM

Designer Appointed Features are home details and finishes curated by the talented design professionals responsible for the distinctive looks found in our model homes.

1 PEDESTAL SINK

Kohler Sterling Sacramento

White | Pedestal sink only available in powder room
24" X 36" Rectangle Mirror with Mastic and Clips

2 FAUCET

Kohler Coralais

Polished Chrome | 8" Widespread

3 TOILET

Kohler Cimarron

White | Upgrade toilet/ Elongated comfort height,
applied to whole home

4 FLOORING-LUXURY VINYL PLANK

Gemcore Topaz

Bayside | Hard Surface throughout

5 BATH ACCESSORIES

Kohler Coralais

Polished Chrome

(1) Paper Holder

(1) Towel Ring



Designer Appointed Features | PRIMARY BATHROOM

Designer Appointed Features are home details and finishes curated by the talented design professionals responsible for the distinctive looks found in our model homes.

1 VANITY CABINETS

Sonoma

Linen | Kitchen and remainder of home cabinets

2 HARDWARE

Contemporary Pull

Verona Bronze | Applied on kitchen and remainder of home cabinetry

3 COUNTERTOP

Quartz

Calacatta Maywood

4 FAUCET

Kohler Coralais

Polished Chrome | 8" Widespread

5 SHOWER ENCLOSURE

Included Shower Enclosure

Cultured Marble surrounds

6 SHOWER FIXTURES

Kohler Coralais

Polished Chrome | Widespread polished chrome package

7 TUB

Kohler Stargazer

White | 60"x34" Freestanding Tub

8 TUB FAUCET

Kohler Coralais

Polished Chrome | Widespread polished chrome package

9 TOILET

Kohler Cimarron

White | Upgrade toilet/ Elongated comfort height, applied to whole home

10 BATH ACCESSORIES

Kohler Coralais

Polished Chrome

(2) Towel Rings per sink applicable

(1) Paper Holder

(1) Towel Bar

11 FLOORING-LUXURY VINYL PLANK

Gemcore Topaz

Bayside | Hard Surface throughout

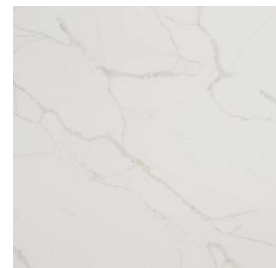
1



2



3



4



5



Picture is EXAMPLE ONLY of the shower door
Handle, hinges, and surrounds not available

6



7



8



9



10



11



Designer Appointed Features | SECONDARY BATHROOM

Designer Appointed Features are home details and finishes curated by the talented design professionals responsible for the distinctive looks found in our model homes.

1 VANITY CABINETS

Sonoma

Linen | Kitchen and remainder of home cabinets

2 HARDWARE

Contemporary Pull

Verona Bronze | Applied on kitchen and remainder of home cabinetry

3 COUNTERTOP

Quartz

Calacatta Maywood

4 FAUCET

Kohler Coralais

Polished Chrome | 8" Widespread

5 TUB/SHOWER

Tub/shower surrounds are cultured marble in lieu of fiberglass surrounds at secondary bath. Includes all applicable secondary baths. Changes slide-in tub to Sterling Ensemble 30" (Vikrell)

6 TUB/SHOWER FIXTURES

Kohler Coralais

Polished Chrome | Widespread polished chrome package

7 TOILET

Kohler Cimarron

White | Upgrade toilet/ Elongated comfort height, applied to whole home

8 FLOORING-LUXURY VINYL PLANK

Gemcore Topaz

Bayside | Hard Surface throughout

9 BATH ACCESSORIES

Kohler Coralais

Polished Chrome

(2) Towel Rings per sink applicable

(1) Paper Holder

(1) Towel Bar

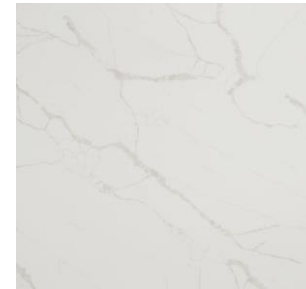
1



2



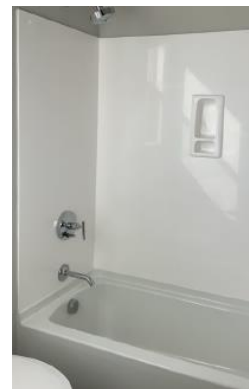
3



4



5



6



7



8



9



Designer Appointed Features | SECONDARY BATHROOM - CASITA

Designer Appointed Features are home details and finishes curated by the talented design professionals responsible for the distinctive looks found in our model homes.

1 VANITY CABINETS

Sonoma

Linen | Kitchen and remainder of home cabinets

2 HARDWARE

Contemporary Pull

Verona Bronze | Applied on kitchen and remainder of home cabinetry

3 COUNTERTOP

Quartz

Calacatta Maywood

4 FAUCET

Kohler Coralais

Polished Chrome | 8" Widespread

5 SHOWER STALL

Upgraded Shower Stall

Upgraded Shower Stall In lieu of tub, surrounds are cultured marble

6 SHOWER FIXTURES

Kohler Coralais

Polished Chrome | Widespread polished chrome package

7 TOILET

Kohler Cimarron

White | Upgrade toilet/ Elongated comfort height, applied to whole home

8 FLOORING-LUXURY VINYL PLANK

Gemcore Topaz

Bayside | Hard Surface throughout

9 BATH ACCESSORIES

Kohler Coralais

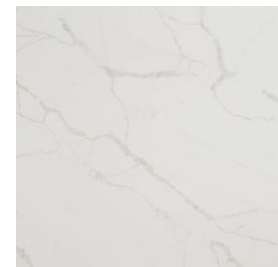
Polished Chrome
(2) Towel Rings per sink applicable
(1) Paper Holder
(1) Towel bar



1



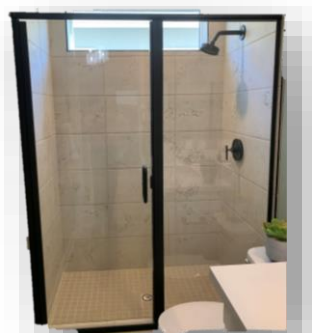
2



3



4



5

Picture is EXAMPLE ONLY of the shower door
Handle, hinges, and surrounds not available

6



7



8



9