



BEACON IN ESTRELLA

Chapin Spanish

HOME SITE 27 | 18186 W AMBER RIDGE WAY | GOODYEAR, AZ 85338

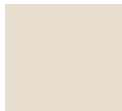
THERE'S STILL TIME TO PERSONALIZE THIS BEAUTIFUL HOME WITH DESIGN STUDIO UPGRADES!

Designer Appointed Features | EXTERIOR SELECTIONS

Designer Appointed Features are home details and finishes curated by the talented design professionals responsible for the distinctive looks found in our model homes.



1



STUCCO FIELD

Sherwin Williams
Pacer White

3



FRONT DOOR

Sherwin Williams
Black Fox

5



ROOFING & COMPLEMENTARY COLOR

Eagle Roofing
Sunrise Blend
Sherwin Williams -Black Fox

7



SOFFIT & FASCIA

Sherwin Williams
Quiver Tan

9



DECORATIVE IRON

Sherwin Williams
Tricorn Black

2



EXTERIOR VENT COLOR

Sherwin Williams
Black Fox

4



GARAGE DOOR

Sherwin Williams
Black Fox

6



STUCCO TRIM & SHUTTERS

Sherwin Williams
Superior Bronze

8



WINDOW FRAME

Adobe / Vinyl Frame,
Dual pane, Low-E
insulated windows

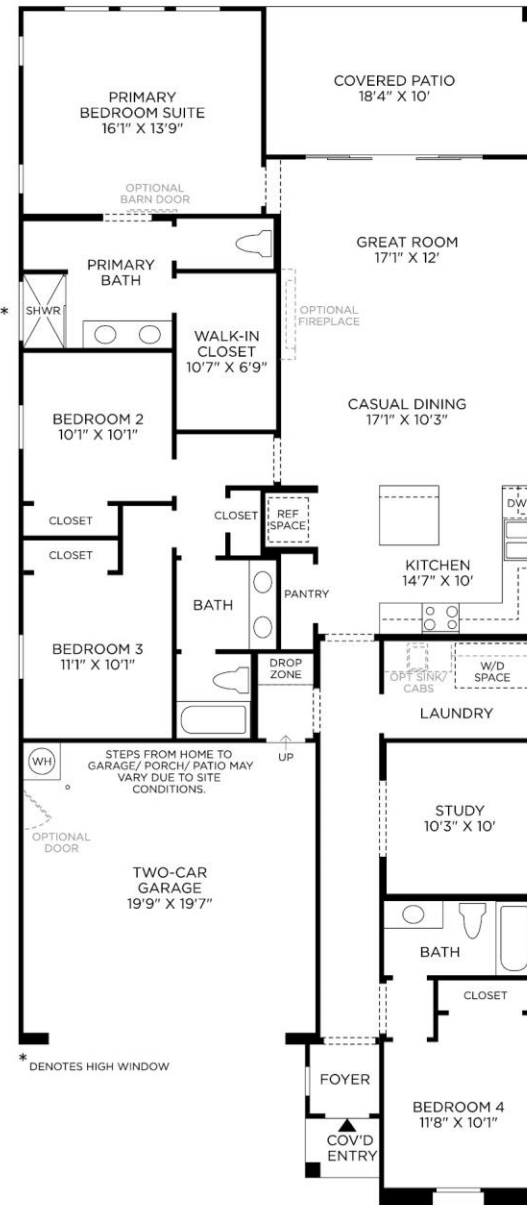
BEACON IN ESTRELLA | CHAPIN SPANISH
HOME SITE 27 | 18186 W AMBER RIDGE WAY | GOODYEAR, AZ 85338

Prices and offers subject to change without notice. This is not an offering where prohibited by law. Images are for representational purposes only and actual product may differ. Not all images may be shown. See online or onsite sales consultants for details. 1/26/23



Designer Appointed Features | FLOOR PLAN

Designer Appointed Features are home details and finishes curated by the talented design professionals responsible for the distinctive looks found in our model homes.



Designer Appointed Features | INCLUDED FEATURES

Designer Appointed Features are home details and finishes curated by the talented design professionals responsible for the distinctive looks found in our model homes.

ARCHITECTURAL DETAILS

- Elegant floor plans with attractive design choices
- Designer insulated garage doors (per elevation) with opener and keyless entry pad
- Concrete roof tile with choice of colors
- Hand-applied sand finish stucco with numerous designer-coordinated exterior color schemes
- Elegant four-sided exterior detailing
- Oversized covered patios for indoor-outdoor living

THOUGHTFULLY DESIGNED INTERIORS

- Dramatic 10' ceilings on first floor and 9' ceilings on second floor
- 8' doors on first floor
- Ceiling fan pre-wires in great room, primary bedroom, secondary bedrooms, and office/loft where applicable
- Contemporary recessed can lighting and energy saving LED lighting throughout home
- Hand-applied skip trowel wall finish and round corner bead throughout
- Superior Shaw stain resistant carpet

KITCHEN

- Energy Star qualified stainless steel appliances by Whirlpool including a 30-inch gas oven/range, dishwasher, and microwave
- Elegant crafted maple cabinets with 36-inch uppers and crown molding in a choice of finishes
- Granite countertops with eased edge
- Undermount single-basin stainless steel sink with Kohler chrome pull-out spray faucet
- Pre-plumbed for icemaker and reverse osmosis

BATHS

- Water-conserving fixtures by Kohler, an EPA WaterSense Partner
- Lavish primary bath includes dual-sink vanities with 8-inch widespread faucets and glass door shower enclosure
- Luxurious 36-inch adult height vanities
- Elongated commodes in all baths

CONVENIENCES

- WiFi Programmable thermostats
- Each home is professionally cleaned prior to settlement
- Pre-wired for advanced communication technology: telephone, cable TV, and computer hook-up

CONSTRUCTION HIGHLIGHTS

- Dual pane, Low-E insulated windows and sliding glass doors
- 14-SEER Carrier/Bryant high efficiency, ground-mounted air conditioning unit
- Advanced QuickFlash exterior penetration system
- Insulation at interior plumbing walls to reduce sound transfer

QUALITY ASSURANCE AND WARRANTY

- Our quality program starts at design inception with the creation of precise construction drawings, specifying high quality material, all the way through to on-site supervision by experienced project managers and construction managers.
- First home buyer orientation minimum 5-7 days prior to settlement utilizing an extensive checklist
- Second home buyer orientation prior to settlement ensures work has been completed
- Ten-year limited warranty program

THERE'S STILL TIME TO PERSONALIZE THIS BEAUTIFUL HOME WITH DESIGN STUDIO UPGRADES!
Countertops | Flooring | Plumbing Fixtures | Door Hardware | Bathroom Accessories | And More

Designer Appointed Features | KITCHEN CABINETS AND APPLIANCES

Designer Appointed Features are home details and finishes curated by the talented design professionals responsible for the distinctive looks found in our model homes.

1 CABINETS

Timberlake Sonoma

Espresso | Shaker Door/Full Overlay
Upgraded Crown Molding 3" Flat Profile
Kitchen and Remainder of Home

2 RANGE

KitchenAid Dual Fuel Range

Stainless Steel | 36-inch

3 VENT HOOD

KitchenAid Vent Hood

Stainless Steel | 36-inch

4 MICROWAVE

KitchenAid Built-In Microwave

Stainless Steel | Trim Kit | Above Wall Oven

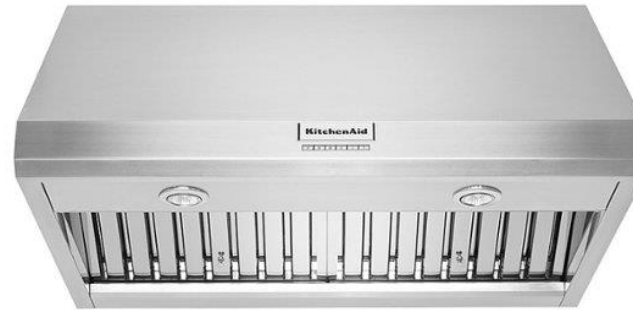
5 DISHWASHER

KitchenAid Integrated

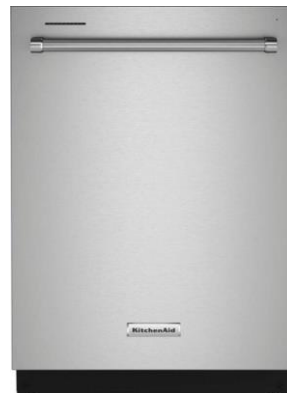
Stainless Steel



1



3



5



2



4

THERE'S STILL TIME TO PERSONALIZE THIS BEAUTIFUL HOME WITH DESIGN STUDIO UPGRADES!

**Countertops | Flooring | Plumbing Fixtures
Door Hardware | Bathroom Accessories
And More**