

Toll Brothers
AMERICA'S LUXURY HOME BUILDER®



MILL CREEK FOREST | MAGNOLIA COLLECTION



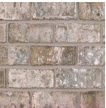
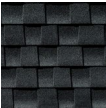

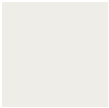


Alice Coastal

HOME SITE 87 | 183 ELM BRANCH RD | ST. JOHNS, FL 32259

Designer Appointed Features | EXTERIOR SELECTIONS

Designer Appointed Features are home details and finishes curated by the talented design professionals responsible for the distinctive looks found in our model homes.



- | | | | | | | | | | | | |
|---|---|--|---|---|--|---|--|--------------------------|---|---|---|
| 1 |  | SIDING
SW 7657 Tinsmith | 3 |  | FRONT DOOR
SW 7674 Peppercorn | 5 |  | BRICK
Nob Hill | 7 |  | ROOF
Charcoal
w/Black Eaves Drip |
| 2 |  | TRIM/ACCENT/
CORBEL
SW 7005 Pure White | 4 |  | GARAGE DOOR
SW 7005 Pure White | 6 |  | PAVERS
Slate | 8 |  | VINYL SOFFIT
& FASCIA
White |

MILL CREEK FOREST | MAGNOLIA COLLECTION | ALICE COASTAL
HOME SITE 87 | 183 ELM BRANCH RD | ST. JOHNS, FL 32259

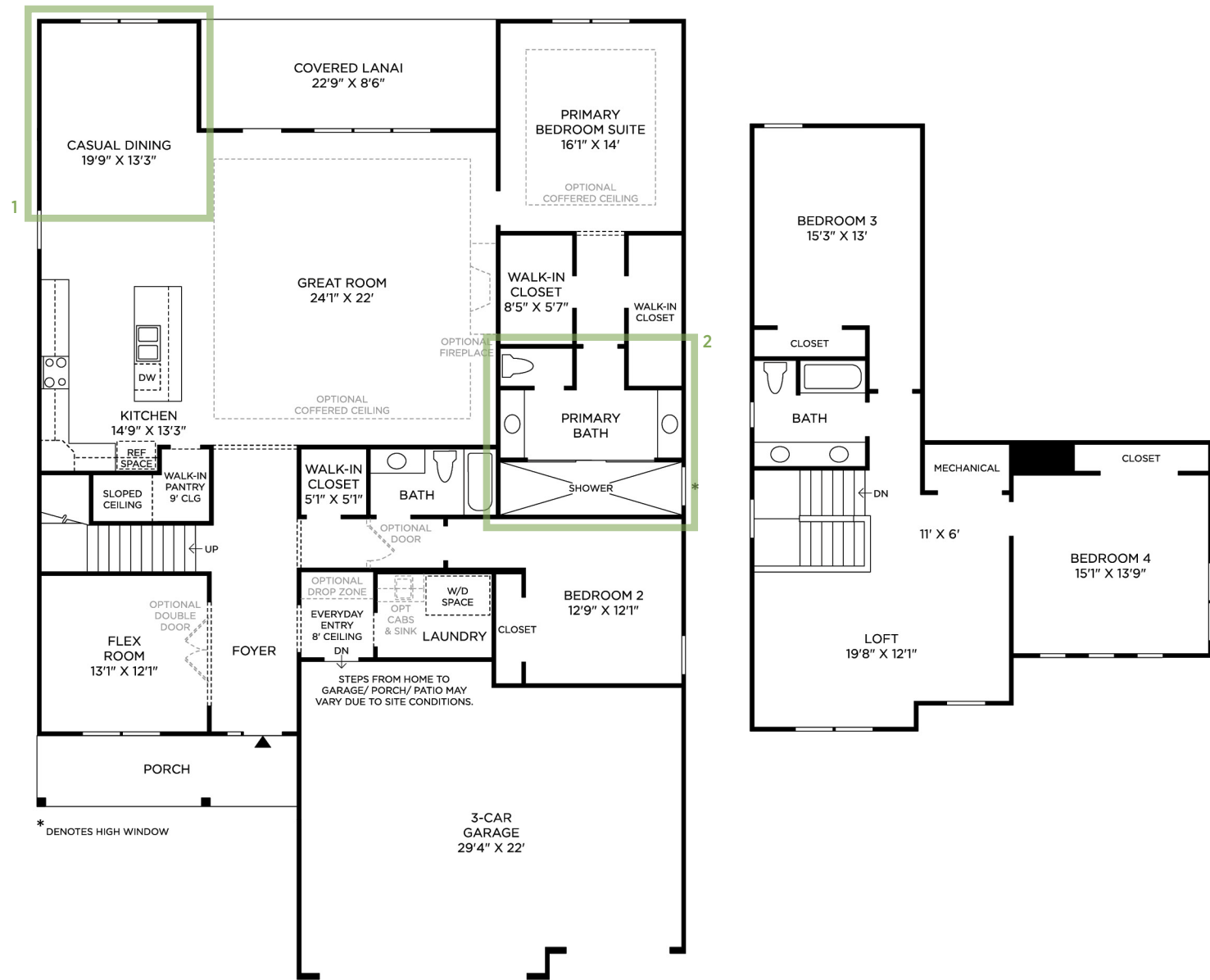
Prices and offers subject to change without notice. This is not an offering where prohibited by law. Images are for representational purposes only and actual product may differ. Not all images may be shown. See online or onsite sales consultants for details.



Designer Appointed Features | STRUCTURAL OPTIONS

Designer Appointed Features are home details and finishes curated by the talented design professionals responsible for the distinctive looks found in our model homes.

- 1 EXPANDED DINING ROOM**
022
- 2 ALTERNATE PRIMARY SHOWER**
374
- 3 OFFICE REPLACES FLEX ROOM**
263300 (NOT SHOWN)
- 4 SLIDING GLASS DOORS**
026167 (NOT SHOWN)
- 5 ADDITIONAL SINGLE WINDOW-2 IN CASUAL DINING**
187 (NOT SHOWN)
- 6 OAK MAIN STAIRS**
197 (NOT SHOWN)
- 7 TREY CEILING IN GREAT ROOM**
145 (NOT SHOWN)
- 8 GOURMET KITCHEN**
750 (NOT SHOWN)
- 9 SMOOTH FINISH WALLS**
082 (NOT SHOWN)
- 10 OPEN RAILING AT LOFT**
178 (NOT SHOWN)



Designer Appointed Features | INTERIOR SELECTIONS

Designer Appointed Features are home details and finishes curated by the talented design professionals responsible for the distinctive looks found in our model homes.

1 INTERIOR CARPENTRY

5 ¼ Baseboard & 3 ¼ Door Casings
White

2 INTERIOR DOORS

Two-Panel Square
White

3 INTERIOR DOOR HANDLES

Kwikset San Clemente/Halifax
Venetian Bronze Lever

4 FLOORING-CARPET

Shaw Wildwood Valley
Fossil

5 FLOORING-TILE

Shaw Bliss
Matte | 6x36

6 INTERIOR PAINT

First Star
SW7646

7 DINING LIGHTING

Progress Replay
Black | 5 Light Chandelier

8 FOYER LIGHTING

Progress Replay
Black | 3-Light Pendant

9 LOFT STAIR RAILING & OAK TREADS

Oak-Stained Treads with
Painted White Risers and
Traditional Newel Post at Loft
405 | Toasted Barrel



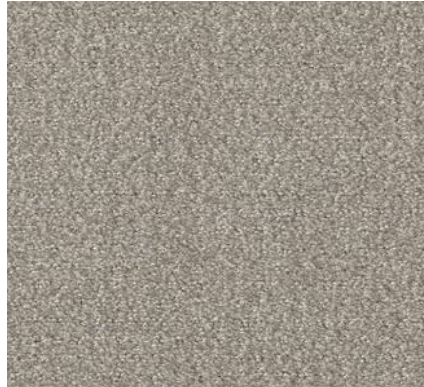
1



2



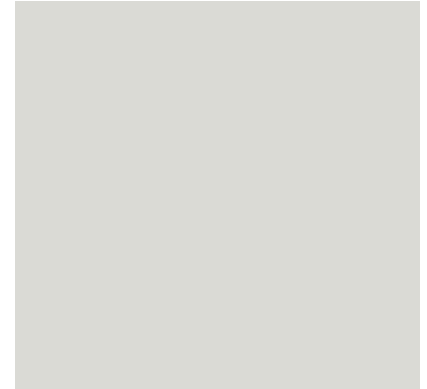
3



4



5



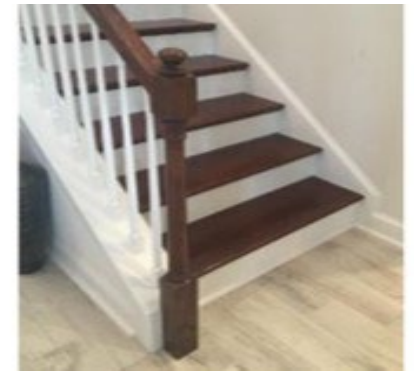
6



7



8



Designer Appointed Features | KITCHEN

Designer Appointed Features are home details and finishes curated by the talented design professionals responsible for the distinctive looks found in our model homes.

1 CABINETS

Aristokraft Brellin
White | Purestyle

2 HARDWARE

Drawer & Door Pulls
Black

3 COUNTERTOP-ISLAND & PERIMETER

LG Viatera Quartz
Cirrus | Quartz - Medium Variation

4 BACKSPLASH

Shaw Geoscape
Chevron | Mosaic

5 FLOORING - TILE

Shaw Bliss
Matte | 6x36

6 FAUCET

Kohler Purist Semi-Pro
Matte Black | Pull Down

7 SINK

Kohler Strive
Stainless Steel | Undermount

8 LIGHTING - ISLAND

Atwell Mini
Matte Black | Mini-Pendant

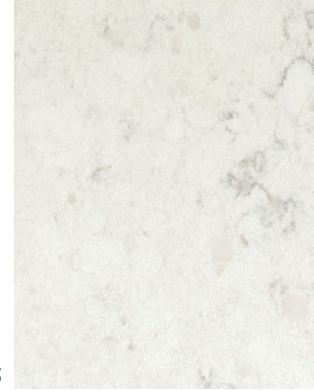
1



2



3



4



5



6



7



8



Designer Appointed Features | KITCHEN APPLIANCES

Designer Appointed Features are home details and finishes curated by the talented design professionals responsible for the distinctive looks found in our model homes.

1 COOKTOP

Whirlpool
Stainless Steel | 5-Burner Gas

2 VENT HOOD

Whirlpool
Stainless Steel | Under Cabinet

3 MICROWAVE

Whirlpool
Stainless Steel | Built-In

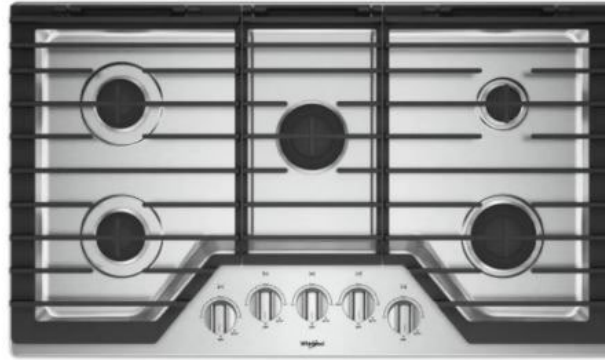
4 WALL OVEN

Whirlpool
Stainless Steel | Built-In

5 DISHWASHER

Whirlpool
Stainless Steel

1



2



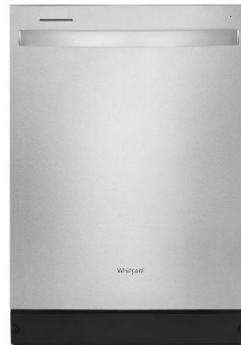
3



4



5



Designer Appointed Features | PRIMARY BATHROOM

Designer Appointed Features are home details and finishes curated by the talented design professionals responsible for the distinctive looks found in our model homes.

1 VANITY CABINETS

Aristokraft Brellin
Stone Gray | Purestyle

2 CABINET HARDWARE

Drawer & Door Knobs
Matte Black

3 COUNTERTOP

LG Viatera Quartz
Cirrus | Quartz - Medium Variation

4 FAUCET

Hint Pitch
Matte Black | Widespread

5 SINK

Kohler Caxton
White

6 SHOWER TILE—WALLS

DalTile Color Wheel
Arctic White Gloss | 3X6

7 SHOWER TILE—FLOOR

DalTile Color Wheel
Herringbone
Desert Gray Matte | Mosaic

8 SHOWER FIXTURES

Kohler Hint Pitch
Matte Black

9 TOILET

Sterling Windham
White | Standard Height

10 BATH ACCESSORIES

Moen Align
Matte Black | Towel Bar & Toilet Paper Holder

11 FLOORING—TILE

Shaw Bliss
Matte | 6x36

12 LIGHTING

Progress Replay
Matte Black | 3-Light Vanity



1



2



3



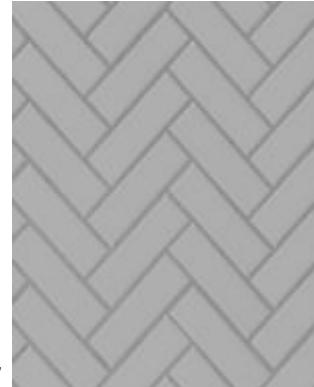
4



5



6



7



8



9



10



11



12

Designer Appointed Features | SECONDARY BATHROOM

Designer Appointed Features are home details and finishes curated by the talented design professionals responsible for the distinctive looks found in our model homes.

1 VANITY CABINETS

Aristokraft Brellin
Stone Gray | Purestyle

2 CABINET HARDWARE

Drawer & Door Knobs
Matte Black

3 COUNTERTOP

Hi-Macs Solid Surface
Aurora Frost | Solid Surface – Med Variation

4 FAUCET

Hint Pitch
Matte Black | Widespread

5 SINK

Kohler Caxton
White

6 SHOWER TILE—WALLS

Dal Tile Color Wheel
Arctic White Gloss | 3X6

7 TUB

Sterling Performa
White

8 SHOWER & TUB FIXTURES

Kohler Hint Pitch
Matte Black

9 TOILET

Sterling Windham
White | Standard Height

10 BATH ACCESSORIES

Moen Align
Matte Black | Towel Bar & Toilet Paper Holder

11 FLOORING-TILE

Shaw Bliss
Matte | 6x36

12 LIGHTING

Progress Replay
Matte Black | 3-Light Vanity



1



2



3



4



5



6



7



8



9



10



11



12