

*Toll Brothers*  
AMERICA'S LUXURY HOME BUILDER®



TAPESTRY AT DESTINATION

# Hutchison Farmhouse

HOME SITE 38 | 11118 E UTAH AVE | MESA, AZ 85212

# Designer Appointed Features | EXTERIOR SELECTIONS

Designer Appointed Features are home details and finishes curated by the talented design professionals responsible for the distinctive looks found in our model homes.



<p><b>1</b></p>  <p><b>STUCCO FIELD</b> Gossamer Veil SW 9165</p>	<p><b>3</b></p>  <p><b>FRONT DOOR</b> Foggy Day SW 6235</p>	<p><b>5</b></p>  <p><b>EXTERIOR VENT COVER + SHUTTERS</b> Gossamer Veil SW 9165</p>	<p><b>7</b></p>  <p><b>ROOF</b> Arcadia Canyon BrownEagle Roofing Ponderosa - 5502</p>	<p><b>9</b></p>  <p><b>ROOF COMPLEMENTARY COLOR</b> Black Fox SW 7020</p>
<p><b>2</b></p>  <p><b>BOARD &amp; BAT/VERTICAL SIDING</b> Oyster Bay SW 6206</p>	<p><b>4</b></p>  <p><b>GARAGE DOOR</b> Gossamer Veil SW 9165</p>	<p><b>6</b></p>  <p><b>TRIM/CORBELS/POST/SOFFIT &amp; FASCIA</b> Gossamer Veil SW 9165</p>	<p><b>8</b></p>  <p><b>BRICK</b> 2"x8" Wirecut iceburg</p>	<p><b>10</b></p>  <p><b>WINDOWS</b> White</p>

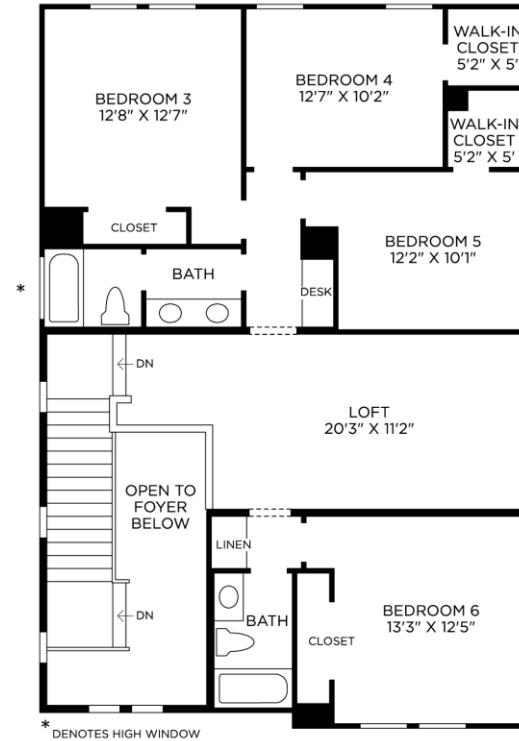
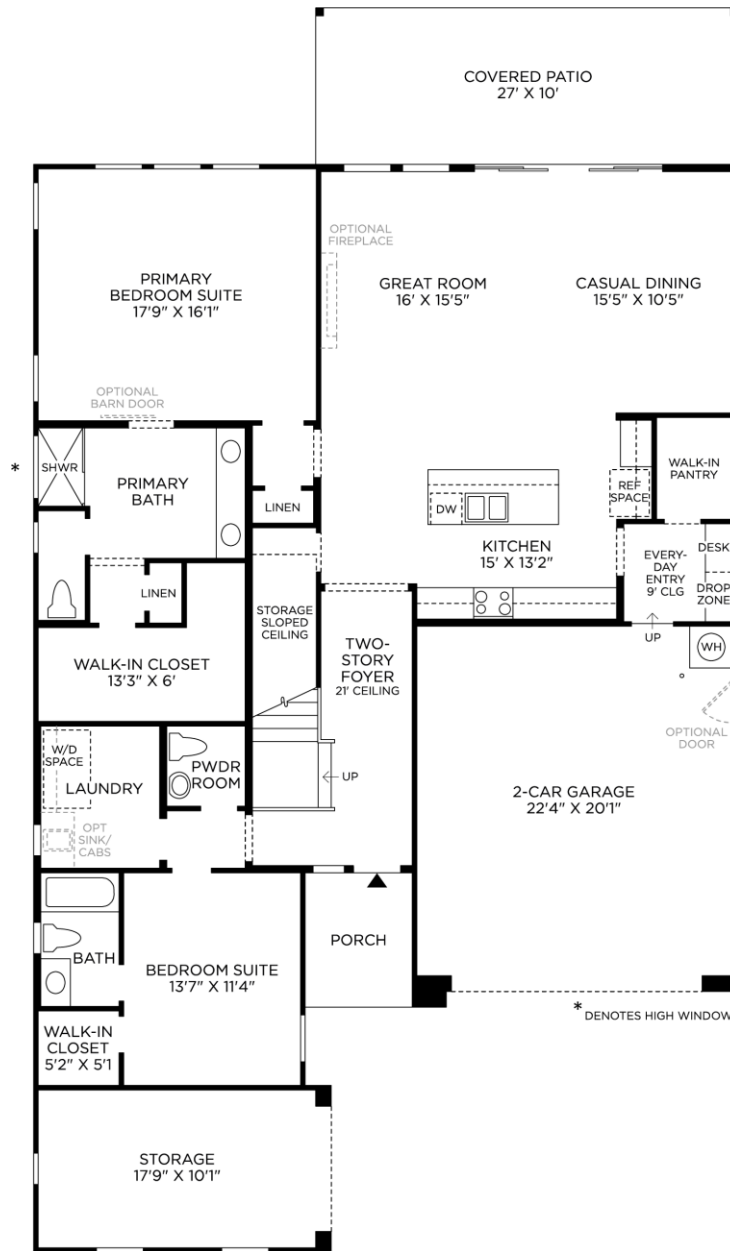
TAPESTRY AT DESTINATION | HUTCHISON FARMHOUSE  
HOME SITE 38 | 11118 E UTAH AVE | MESA, AZ 85212

Photographs, renderings, and floor plans are for representational purposes only and may not reflect the exact features or dimensions of your home. All dimensions are subject to field variations. Prices and offers subject to change without notice. This is not an offering where prohibited by law. Images are for representational purposes only and actual product may differ. Not all images may be shown. See online or onsite sales consultants for details.



# Designer Appointed Features | STRUCTURAL OPTIONS

Designer Appointed Features are home details and finishes curated by the talented design professionals responsible for the distinctive looks found in our model homes.



# Designer Appointed Features | INTERIOR SELECTIONS

Designer Appointed Features are home details and finishes curated by the talented design professionals responsible for the distinctive looks found in our model homes.

## 1 WALL PAINT

**Sherwin Williams**

Alabaster

## 2 INTERIOR DOORS

**Executive Door Co. - Hollow Core**

Alabaster | 2 Panel

## 3 INTERIOR DOOR HANDLES

**Kwikset - Tustin**

Polished Chrome

## 4 FLOORING-CARPET

**Shaw - Fort Washington**

Cream Puff | 8lb. Pad

## 5 FLOORING-BATHROOM TILE

**Arizona Tile - Lagos**

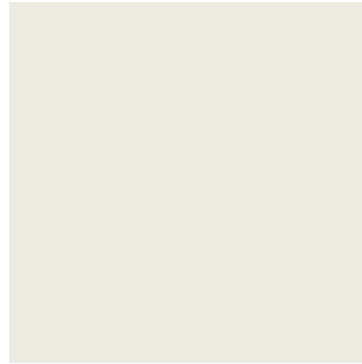
Ivory | 12x24 33% Stairstep

## 6 FLOORING-LVP

**Shaw - Home**

Cozy Taupe

1



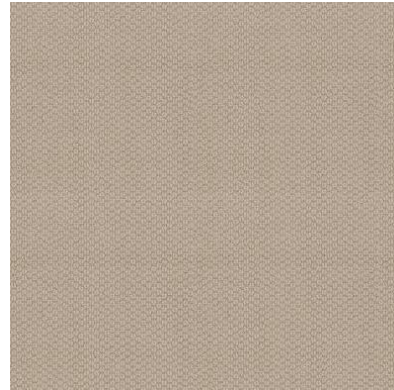
2



3



4



5



6



# Designer Appointed Features | KITCHEN

Designer Appointed Features are home details and finishes curated by the talented design professionals responsible for the distinctive looks found in our model homes.

## 1 CABINETS

### Timberlake – Barnett

Maple Latte | Standard Overlay – Slab Drawer

## 2 COUNTERTOP

### Arizona Tile - Quartz

Ripieno | 1 ½" Edge

## 3 BACKSPLASH

### Arizona Tile - Paloma

Cotton Glossy | Picket Horizontal Straight Stack

## 4 FLOORING-LVP

### Shaw – Home

Cozy Taupe

## 5 FAUCET

### Kohler - Jolt

Polished Chrome

## 6 SINK

### Kohler – Vault

Stainless | Single Bowl Undermount



1



2



3



4



5



6

Photographs, renderings, and floor plans are for representational purposes only and may not reflect the exact features or dimensions of your home. All dimensions are subject to field variations. Prices and offers subject to change without notice. This is not an offering where prohibited by law. Images are for representational purposes only and actual product may differ. Not all images may be shown. See online or onsite sales consultants for details.



# Designer Appointed Features | KITCHEN APPLIANCES

Designer Appointed Features are home details and finishes curated by the talented design professionals responsible for the distinctive looks found in our model homes.

## 1 COOKTOP

**KitchenAid**

Stainless | 36" Gas 5 Burner

## 2 VENT HOOD

**KitchenAid**

Stainless | 36" Under Cabinet

## 3 COMBO WALL OVEN/MICRO

**KitchenAid**

Stainless | 30" Electric

## 4 DISHWASHER

**KitchenAid**

Stainless | 24"

## 5 REFRIGERATOR

**KitchenAid**

Stainless | 36" Counter Depth

## 6 WASHER & DRYER

**Whirlpool**

White | Front Load Electric



1



2



3



4



5



6

Photographs, renderings, and floor plans are for representational purposes only and may not reflect the exact features or dimensions of your home. All dimensions are subject to field variations. Prices and offers subject to change without notice. This is not an offering where prohibited by law. Images are for representational purposes only and actual product may differ. Not all images may be shown. See online or onsite sales consultants for details.



EQUAL HOUSING OPPORTUNITY

# Designer Appointed Features | POWDER ROOM

Designer Appointed Features are home details and finishes curated by the talented design professionals responsible for the distinctive looks found in our model homes.

## 1 PEDESTAL SINK

**Kohler - Sacramento**  
White | 21in

## 2 FAUCET

**Kohler - Bellera**  
Polished Chrome | Widespread

## 3 TOILET

**Kohler - Highline**  
White | Comfort Height

## 4 FLOORING-LVP

**Shaw - Home**  
Cozy Taupe | Random Stagger

## 5 BATH ACCESSORIES

**Kohler - Bellera**  
Polished Chrome

1



2



3



4



5



Photographs, renderings, and floor plans are for representational purposes only and may not reflect the exact features or dimensions of your home. All dimensions are subject to field variations. Prices and offers subject to change without notice. This is not an offering where prohibited by law. Images are for representational purposes only and actual product may differ. Not all images may be shown. See online or onsite sales consultants for details.



# Designer Appointed Features | PRIMARY BATHROOM

Designer Appointed Features are home details and finishes curated by the talented design professionals responsible for the distinctive looks found in our model homes.

## 1 VANITY CABINETS

### Timberlake – Barnett

Maple Latte | Standard Overlay – Slab Drawer

## 2 COUNTERTOP & INTEGRATED SINK

### Cultured Marble

White | Square Sink

## 3 FAUCET

### Kohler - Bellera

Polished Chrome | Widespread

## 4 SHOWER TILE—SIDE WALLS

### Arizona Tile - Paloma

Cotton Matte | 4x16 Horizontal Straight Stack

## 5 SHOWER TILE—BACK WALL

### Arizona Tile - Shibusa

Crema | 9" Hex Vertical Straight Stack

## 6 SHOWER TILE—FLOOR

### Arizona Tile - Lagos

Ivory | 2x2 Mosaic

## 7 SHOWER FIXTURES

### Kohler - Bellera

Polished Chrome |

## 8 TOILET

### Kohler - Highline

White | Comfort Height

## 9 BATH ACCESSORIES

### Kohler - Bellera

Polished Chrome |



Photographs, renderings, and floor plans are for representational purposes only and may not reflect the exact features or dimensions of your home. All dimensions are subject to field variations. Prices and offers subject to change without notice. This is not an offering where prohibited by law. Images are for representational purposes only and actual product may differ. Not all images may be shown. See online or onsite sales consultants for details.



# Designer Appointed Features | SECONDARY BATHROOM

Designer Appointed Features are home details and finishes curated by the talented design professionals responsible for the distinctive looks found in our model homes.

## 1 VANITY CABINETS

### Timberlake – Barnett

Maple Latte | Standard Overlay – Slab Drawer

## 2 COUNTERTOP & INTEGRATED SINK

### Cultured Marble

White | Square Sink

## 3 FAUCET

### Kohler - Bellera

Polished Chrome | Widespread

## 4 SHOWER SURROUNDS

### Medley Walls

White

## 5 TUB

### Kohler - Ensemble

White | 5'

## 6 SHOWER FIXTURES

### Kohler - Bellera

Polished Chrome

## 7 TOILET

### Kohler - Highline

White | Comfort Height

## 8 BATH ACCESSORIES

### Kohler - Bellera

Polished Chrome



1



2



3



4



5



6



7



8

Photographs, renderings, and floor plans are for representational purposes only and may not reflect the exact features or dimensions of your home. All dimensions are subject to field variations. Prices and offers subject to change without notice. This is not an offering where prohibited by law. Images are for representational purposes only and actual product may differ. Not all images may be shown. See online or onsite sales consultants for details.

