

*Toll Brothers*  
AMERICA'S LUXURY HOME BUILDER®



TOLL BROTHERS AT WILDFLOWER

# Evans Farmhouse

HOME SITE 2063 | 2317 N WILD YARROW DR | SARATOGA SPRINGS, UT 84045



# Designer Appointed Features | EXTERIOR SELECTIONS

Designer Appointed Features are home details and finishes curated by the talented design professionals responsible for the distinctive looks found in our model homes.



1		<b>BODY</b> SW 7005 Pure White	3		<b>FRONT DOOR</b> SW 7674 Peppercorn	5		<b>BRICK</b> Weathered Brick Savannah	7		<b>ROOF SHINGLES</b> Pewter Gray	9		<b>RIGGERS</b> SW 7005 Pure White
2		<b>TRIM</b> SW 7005 Pure White	4		<b>GARAGE DOOR</b> White	6		<b>SOFFIT &amp; FASCIA</b> White	8		<b>METAL ROOF</b> Black	10		<b>WINDOWS</b> White

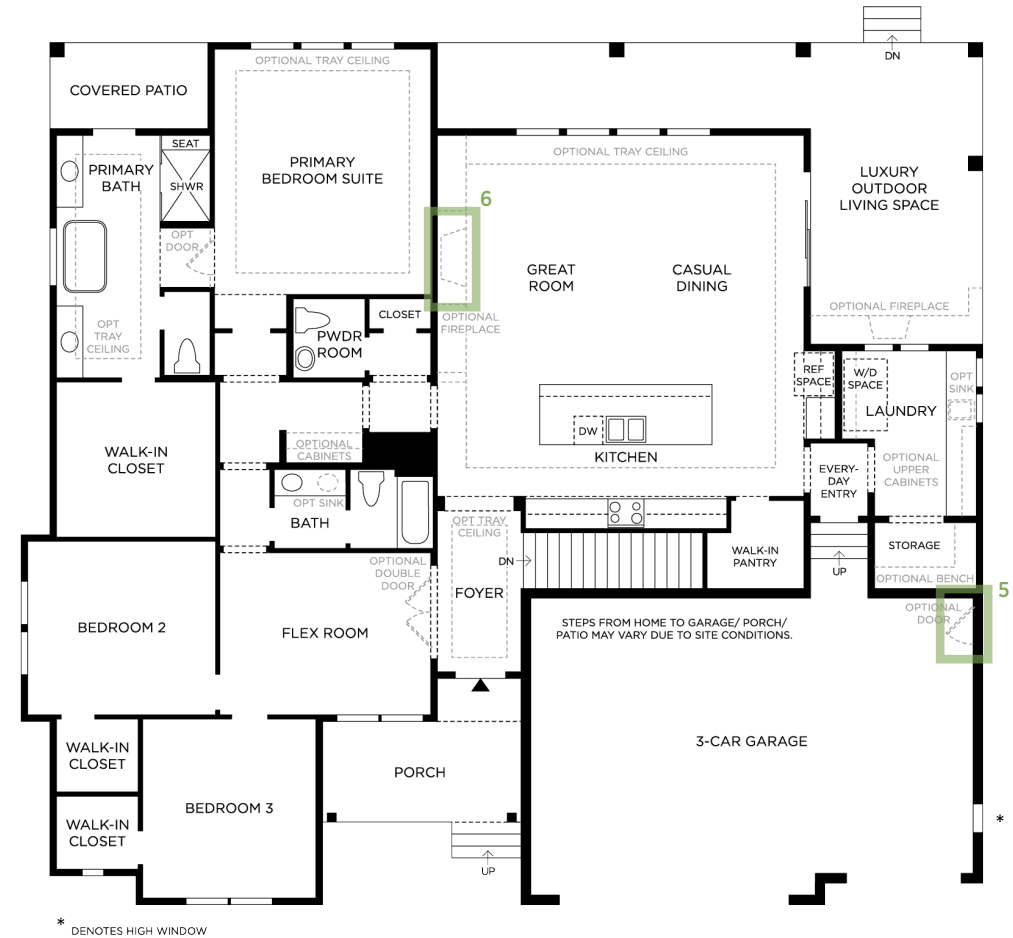
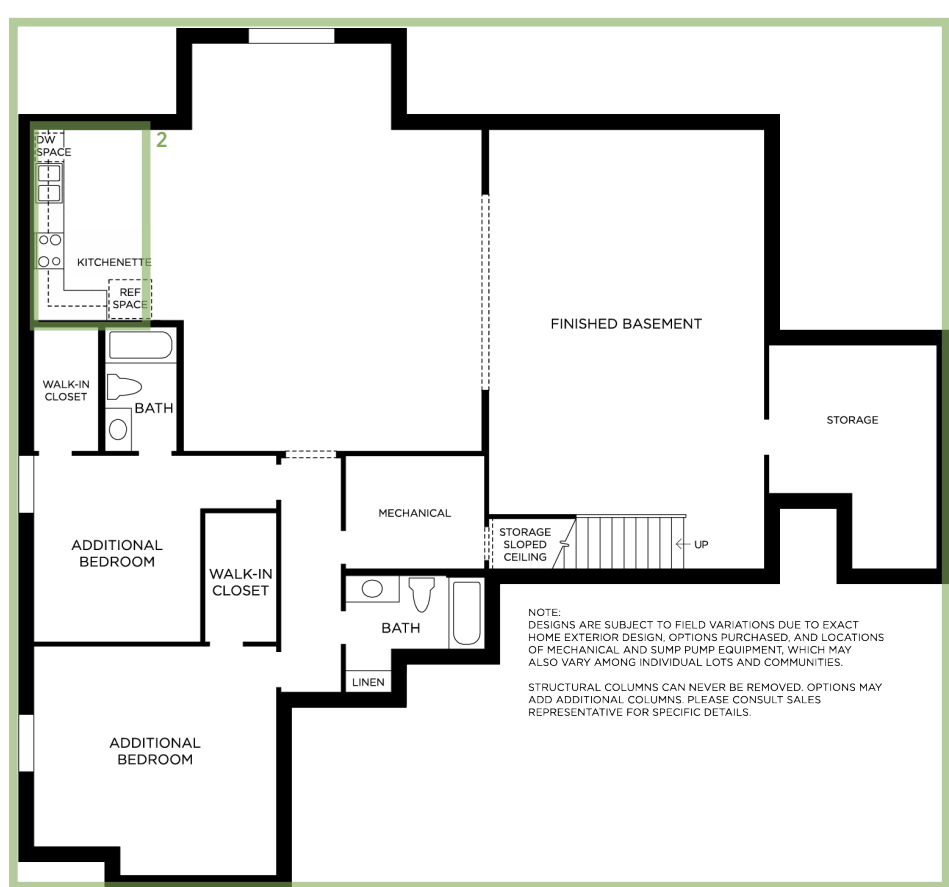
TOLL BROTHERS AT WILDFLOWER | EVANS FARMHOSUE  
HOME SITE 2063 | 2317 N WILD YARROW DR | SARATOGA SPRINGS, UT 84045

Photographs, renderings, and floor plans are for representational purposes only and may not reflect the exact features or dimensions of your home; actual product may differ. All dimensions are subject to field variations. Prices and offers subject to change without notice. This is not an offering where prohibited by law. Not all images may be shown. See online or onsite Sales Consultants for details.



## Designer Appointed Features | ARCHITECTURAL SELECTIONS

Designer Appointed Features are home details and finishes curated by the talented design professionals responsible for the distinctive looks found in our model homes.



## 1 FINISHED BASEMENT

PC263018

### 3 WALKOUT BASEMENT

PC017 (not shown)

## 2 KITCHENETTE

PC263140

#### 4 90-DEGREE EXPANSIVE SLIDING DOOR

PC026141 (not shown)

## 5 ADDITIONAL EXTERIOR DOOR

PC164

## 6 TRADITIONAL FIREPLACE - 42"

PC106219





# Designer Appointed Features | INTERIOR SELECTIONS

Designer Appointed Features are home details and finishes curated by the talented design professionals responsible for the distinctive looks found in our model homes.

**1 WALL PAINT**

Sherwin Williams  
Pure White | One Tone

**2 INTERIOR DOORS**

Masonite  
SW 7005 Pure White | Smooth finish  
Raised Panel Hollow Core

**3 INTERIOR DOOR HANDLES**

Pismo Knob  
Iron Black| Knob

**4 FLOORING-CARPET**

Shaw  
Enchantment Natural Wood | Pattern carpet

**5 FLOORING-VINYL PLANKS**

Shaw TB Home  
Cozy Taupe

**6 FIREPLACE TILE SURROUND**

Pre Cast Stone  
Natural |

**7 RAILING**

Black | Flat Metal Bars

**8 TILE**

Arizona Tile  
Futura Beige | 12" x 24"

9



# Designer Appointed Features | KITCHEN & KITCHENETTE

Designer Appointed Features are home details and finishes curated by the talented design professionals responsible for the distinctive looks found in our model homes.

## 1 CABINETS- PERIMETER

### Mastercraft Cabinets

Lancaster maple Porter | Stained  
Recessed Panels

## 2 CABINETS - ISLAND

### Mastercraft Cabinets

White Icing Classic | Painted  
Recessed Panels

## 3 HARDWARE

### Contemporary Pull F

Matte Black Finish

## 4 COUNTERTOP-ISLAND AND WATERFALL EDGES (KITCHEN ONLY)

### Arizona Tile

Fantasy Brown Satin | Granite 3cm Polished Edge

## 5 COUNTERTOP- PERIMETER

### Arizona tile

New Venatino Beige | 3cm Quartz Polished Edge

## 6 FLOORING-VINYL PLANKS

### Shaw

TB Pride Plus

## 7 FAUCET

### Crue Pull Down

Black | Pull-Down

## 8 SINK

### Kohler

Stainless Steel | Undermount Single Bowl

## 9 BACKSPLASH

### Arizona tile

Sand Gloss | 2x9



1



MAPLE PORTER

2



MAPLE WHITE ICING

3



4



5



6



7



8



9

# Designer Appointed Features | KITCHEN APPLIANCES

Designer Appointed Features are home details and finishes curated by the talented design professionals responsible for the distinctive looks found in our model homes.

## 1 REFRIGERATOR

**KitchenAid**

Stainless Steel | 24.2 Cu Ft  
Automatic Interior Ice Maker  
E-Star

## 2 DOUBLE WALL OVEN

**KitchenAid**

Stainless Steel | Convection Ovens  
Temperature Probe

## 3 VENT HOOD

**KitchenAid**

Stainless Steel | 585 CFM  
4-Speed Fan  
Automatic Turn On  
Power Boost Function

## 4 36" 6-BURNER GAS RANGETOP

**KitchenAid**

Stainless Steel | 5,000 BTU Simmer & Melt Burner  
Dual Flame Burners

## 5 MICROWAVE

**KitchenAid**

Stainless Steel | Sensor Functions  
Auto Touch Open/Close  
950 Watt Cooking Power  
1.2 Cu Ft Capacity

## 6 DISHWASHER

**KitchenAid**

Stainless Steel | 44 dBa  
Advanced Clean Water Wash System



1



2



3



4



5



6

# Designer Appointed Features | LAUNDRY ROOM

Designer Appointed Features are home details and finishes curated by the talented design professionals responsible for the distinctive looks found in our model homes.

## 1 CABINETS

### Mastercraft Cabinets

Lancaster Maple Porter | Stained  
Recessed Panels

## 2 COUNTERTOP

### Arizona tile

New Venatino Beige | 3cm Quartz Polished Edge

## 3 WASHER

### Whirpool

White | 5.3 Cu. Ft Capacity

## 4 ELECTRIC DRYER

### Whirpool

White | 7.8 Cu Ft Capacity

## 5 SINK

### Kohler Latitude

White | Sink

## 6 FAUCET

### Kohler Crue

Black | Pull-Down

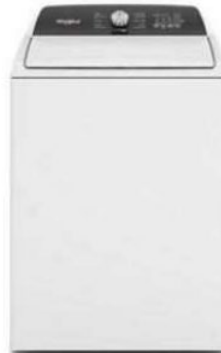
1



2



3



4



5



# Designer Appointed Features | PRIMARY BATHROOM

Designer Appointed Features are home details and finishes curated by the talented design professionals responsible for the distinctive looks found in our model homes.

## 1 VANITY CABINETS

Mastercraft Cabinets

Lancaster Maple Porter | Stained  
Recessed Panels

## 2 HARDWARE

Contemporary Pull F

Black Finish

## 3 COUNTERTOP

Arizona Tile

New Venatino Beige | Quartz 3cm Polished Edge

## 4 FAUCET

Kohler

Black Matte | Vanity Faucet

## 5 SINK

Kohler

White | Undermount

## 6 SHOWER TILE—WALLS

Arizona Tile

Concerto Sand | 2x9 Gloss

## 7 FLOORING TILE

Arizona Tile

Futura Beige | 12x24

## 8 SHOWER PAN TILE

Arizona Tile

Futura Beige | 2x2

## 9 TUB

Kohler

White

## 10 TUB FAUCET

Kohler

Matte Black

## 11 SHOWER HEAD

Kohler Awaken

Matte Black



1



2



3



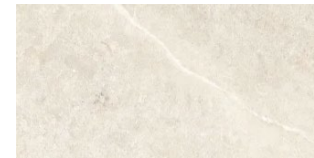
4



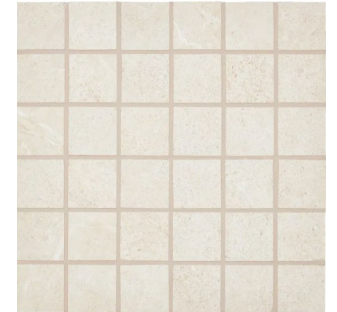
5



6



7



8



9



10



11



# Designer Appointed Features | SECONDARY BATHROOMS

Designer Appointed Features are home details and finishes curated by the talented design professionals responsible for the distinctive looks found in our model homes.

## 1 VANITY CABINETS

Mastercraft Cabinets

Lancaster Maple Porter | Stained  
Recessed Panels

## 2 CABINET HARDWARE

Contemporary Pull F

Black Finish

## 3 COUNTERTOPS

Arizona Tile

New Venatino Beige | Quartz 3cm Polished Edge

## 4 FLOORING TILE

Arizona Tile

Futura Beige | S2x12x24

## 5 SHOWER WALL TILE

Arizona Tile

Paloma Alabaster glossy | 3 x 12 Picket vertical  
Pattern

## 6 FAUCET

Kohler

Black | Widespread

Coordinating Shower/Tub combo and Hardware

## 7 TUB

Kohler

White

## 8 SINK

Kohler

White | Undermount



1



2



3



4



5



6



7



8

# Designer Appointed Features | POWDER BATHROOM

Designer Appointed Features are home details and finishes curated by the talented design professionals responsible for the distinctive looks found in our model homes.

## 1 VANITY CABINETS

Kohler Archer

White | Pedestal sink

## 2 TOILET

Kohler Wellworth

White | elongated

## 3 SINK

Kohler

White | Undermount

## 4 FLOORING

Arizona Tile

Futura Beige Matte | 12 x24

## 5 FAUCET

Kohler

Black | Widespread



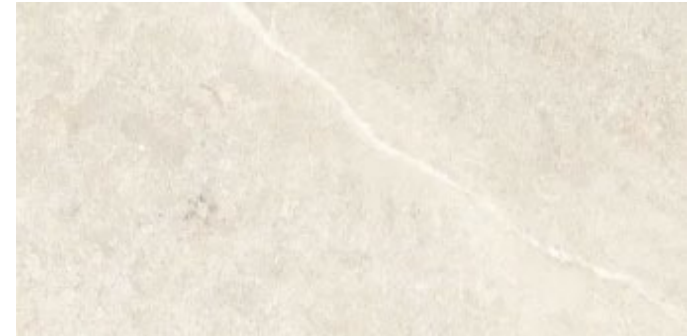
1



2



3



4



5

# Designer Appointed Features | BASEMENT

Designer Appointed Features are home details and finishes curated by the talented design professionals responsible for the distinctive looks found in our model homes.

**1 ELECTRIC RANGE**

Whirlpool  
Stainless Steel/ Black | 30" Slide in

**2 MICROWAVE**

Whirlpool Over-The-Range  
Stainless Steel / Black | 1.9 Cu. Ft Capacity

**3 DISHWASHER**

Whirlpool  
Stainless Steel | 55 dBa

**4 SINK**

Vault Sink Bowl  
Stainless Steel | Sink

**5 FAUCET**

Kohler Crue  
Black | Pull-Down

**6 CABINETS**

Mastercraft  
Lancaster Maple Porter | Stained

**7 HARDWARE**

Contemporary Pull F  
Matte Black | Pull

**8 COUNTER**

Arizona Tile  
New Venatino Beige | 3 cm Polished

**9 LIGHTING-ISLAND**

Manufacturer Product  
Color | Size or Description

**10 LIGHTING-DINING**

Manufacturer Product  
Color | Size or Description

