

*Toll Brothers*  
AMERICA'S LUXURY HOME BUILDER®



TOLL BROTHERS AT SEMINOLE ISLE

# Aloma Coastal

HOME SITE 38 | 9992 KEY HAVEN RD | SEMINOLE, FL 33777

# Designer Appointed Features | EXTERIOR SELECTIONS

Designer Appointed Features are home details and finishes curated by the talented design professionals responsible for the distinctive looks found in our model homes.



1		<b>BOARD &amp; BATTEN</b> Dover White SW 6385	3		<b>FRONT DOOR</b> Stardew SW 9138	5		<b>WINDOWS</b> White
2		<b>STUCCO</b> Buff SW 7683	4		<b>GARAGE DOOR</b> Dover White SW 6385	6		<b>SHUTTERS</b> Stardew SW 9138

TOLL BROTHERS AT SEMINOLE ISLE | ALOMA COASTAL  
HOME SITE 38 | 9992 KEY HAVEN RD | SEMINOLE, FL 33777

Photographs, renderings, and floor plans are for representational purposes only and may not reflect the exact features or dimensions of your home; actual product may differ. All dimensions are subject to field variations. Prices and offers subject to change without notice. This is not an offering where prohibited by law. Not all images may be shown. See online or onsite Sales Consultants for details.





# Designer Appointed Features | ARCHITECTURAL SELECTIONS

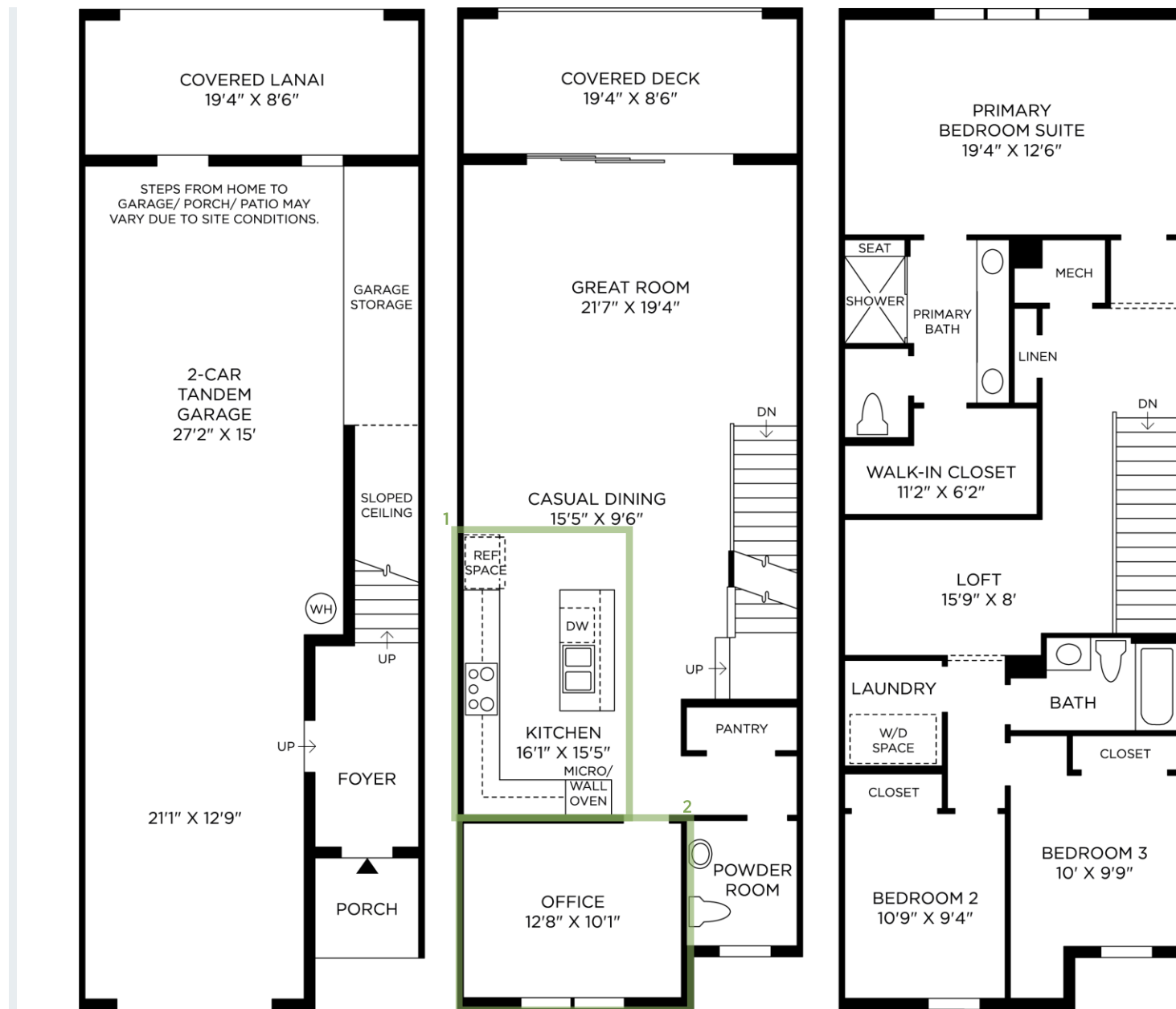
Designer Appointed Features are home details and finishes curated by the talented design professionals responsible for the distinctive looks found in our model homes.

## 1 ALTERNATE KITCHEN LAYOUT

PC263104

## 2 OFFICE

PC263300



# Designer Appointed Features | INTERIOR FEATURES WITH EXTERIOR HARDWARE

Designer Appointed Features are home details and finishes curated by the talented design professionals responsible for the distinctive looks found in our model homes.

## 1 EXTERIOR HANDLESET

**Kwikset San Clemente**

Matte Black | 916 ZW Contemporary Smart Deadbolt

## 2 INTERIOR HANDLESET

**Kwikset Halifax Lever**

Matte Black

## 3 INTERIOR DOORS

**Masonite**

White | 2-Panel Square

## 4 INTERIOR PAINT – WALLS & CEILING

**Sherwin Williams**

Pure White | Flat

## 5 INTERIOR PAINT – TRIM

**Sherwin Williams**

Extra White | Semi-Gloss

## 6 LVP – 2ND FLOOR MAIN LIVING AND OFFICE

**Shaw TB Domain**

Jerome Oak

1



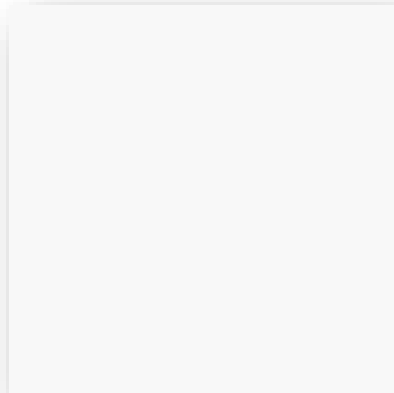
2



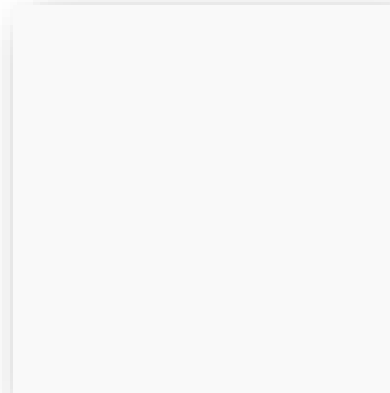
3



4



5



6



# Designer Appointed Features | INTERIOR FEATURES WITH EXTERIOR DOOR HARDWARE

Designer Appointed Features are home details and finishes curated by the talented design professionals responsible for the distinctive looks found in our model homes.

## 1 LVP – 3RD FLOOR BEDROOMS AND LOFT

**Shaw TB Domain**

Jerome Oak

## 2 STAIR BALUSTERS

**Straight Black Wrought Iron**

## 3 NEWEL POST

**4010G Modern Newel**

Stain: Ebony

## 4 HANDRAIL

**684 Handrail**

Stain: Ebony

## 5 TREADS

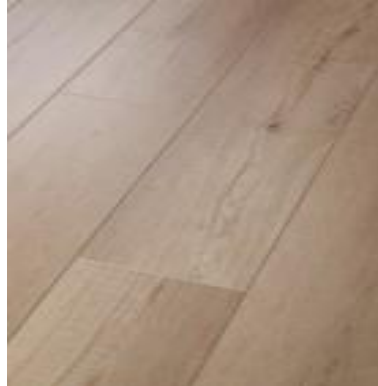
**Stained Red Oak with Painted Risers**

Stain: Ebony | Paint: SW 7006 Extra White

## 6 STAIN COLOR

Ebony

1



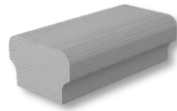
2



3



4



5



6



# Designer Appointed Features | KITCHEN

Designer Appointed Features are home details and finishes curated by the talented design professionals responsible for the distinctive looks found in our model homes.

## 1 CABINETRY - PERIMETER

### Mid-Continent Henri FO

Painted White- Full Overlay with Soft Close Drawers and Doors

## 2 CABINETRY - ISLAND

### Mid-Continent Henri FO

Painted Retreat- Full Overlay with Soft Close Doors

## 3 CABINETRY HARDWARE

### Top Knobs Square Bar Pull

Honey Bronze

## 4 COUNTERTOP

### MSI Q Quartz

Carrara Breve | 3 cm

## 5 BACKSPLASH

### Daltile Revalia Remix Structural

Gloss Moss | 3x4 Mosaic Mesh

## 6 FLOORING-ENGINEERED WOOD

### Shaw Kingston Oak

Tapestry

## 7 FAUCET

### Kohler Crue

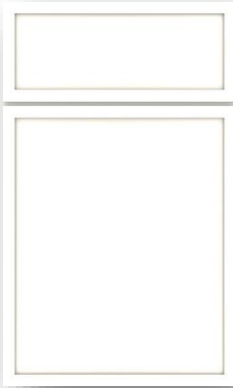
Moderne Brushed Brass | Pull-Down

## 8 SINK

### Sterling McAllister

Stainless Steel | Single Bowl Undermount | 11600-NA SS

1



2



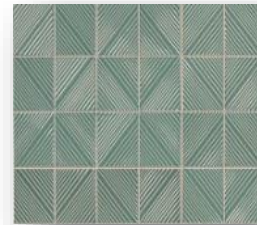
3



4



5



6



7



8



# Design Elements | OPTIONAL WHIRLPOOL BUILT-IN ELECTRIC

Designer Appointed Features are home details and finishes curated by the talented design professionals responsible for the distinctive looks found in our model homes.

## 36" ELECTRIC COOKTOP, COMBO OVEN, HOOD, DISHWASHER

Phase 1 Option # PC112991

Phase 2 Option # APKK2005

(Envision APKK2005-1)

- 1 **36" Convertible Under-Cabinet Hood**  
**UXT5536AAS**
  - 400 CFM exhaust rating
  - Dual-halogen worksurface
- 2 **36" Electric Ceramic Glass Cooktop with Dual Radiant Element**  
**WCE55US6HB**
  - Easy-wipe ceramic glass cooktop
  - Warm zone element
  - 5-element cooktop
- 3 **Combo Wall Oven with Air Fry When Connected—Smart Wall Oven**  
**WOEC5030LZ**
  - 6-in-1 wall oven with fan convection
  - 6.4 cu. ft. total capacity
  - Air-fry mode when connected
  - Automatic feature updates when connected
- 4 **Large-Capacity Dishwasher with Third Rack**  
**WDT751SAPZ**
  - 47 dBA
  - Stainless steel tub—5 cycles
  - 5 options
  - Top control



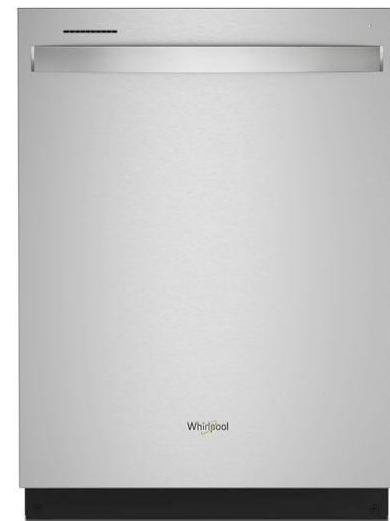
1



3



2



4



# Design Elements | OPTIONAL WHIRLPOOL 36 " FREESTANDING REFRIGERATION

Designer Appointed Features are home details and finishes curated by the talented design professionals responsible for the distinctive looks found in our model homes.

## 1 WHIRLPOOL FRENCH DOOR

WRF555SDFZ

Option # PC112921 / APPR0005

- 25 cu. ft.
- Exterior ice and water
- Spillproof shelves
- Two-tier freezer storage
- Fingerprint resistant
- Energy Star

1





# Designer Appointed Features | POWDER ROOM

Designer Appointed Features are home details and finishes curated by the talented design professionals responsible for the distinctive looks found in our model homes.

## 1 PEDESTAL SINK

### Sterling Sacramento

White | Widespread | 442128-0

## 2 FAUCET

### Kohler Hint

Moderne Brushed Brass | Widespread | K-37893-4-2MB

## 3 TILE

### Marazzi Persuade

Beige | 12x24

## 4 TOILET

### Kohler Highline

White | Elongated Comfort Height | K-3999-0



1



2



3



4

# Designer Appointed Features | PRIMARY BATHROOM

Designer Appointed Features are home details and finishes curated by the talented design professionals responsible for the distinctive looks found in our model homes.

## 1 CABINETRY

### Mid-Continent Henri FO

Painted White | Full Overlay with Soft Close Doors and Drawers

## 2 CABINETRY HARDWARE

### Top Knobs Square Bar Pull

Honey Bronze

## 3 COUNTERTOP

### MSI Q Quartz

Carrara Breve | 3cm

## 4 VANITY FAUCET

### Kohler Hint

Moderne Brushed Brass | Widespread | K-37893-4-2MB

## 5 VANITY SINK

### Kohler Caxton Rectangle

White | Undermount | K-20000-0

## 6 TILE - FLOOR & SHOWER WALL

### Floor: Marazzi Persuade

Beige | 12x24

### Wall: Daltile Rigid Clay Ridge

Salt Ridge | 12x24

## 7 SHOWER PAN

### Kohler Rely

White | Acrylic | K-8649-0

## 8 SHOWER FAUCET

### Kohler Pitch

Moderne Brushed Brass | K-TS97077-4G-2MB

## 9 TOILET

### Kohler Highline

White | Elongated Comfort Height | K-3999-0



1



2



3



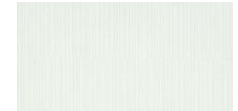
4



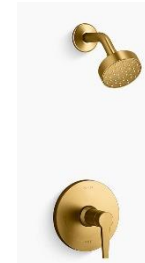
5



6



7



8



9

# Designer Appointed Features | BATHROOM # 2

Designer Appointed Features are home details and finishes curated by the talented design professionals responsible for the distinctive looks found in our model homes.

## 1 CABINETRY

### Mid-Continent Henri FO

Painted White | Full Overlay with Soft Close Doors

## 2 CABINETRY HARDWARE

### Top Knobs Square Bar Pull

Honey Bronze

## 3 COUNTERTOP

### MSI Q Quartz

Carrara Breve | 3cm

## 4 VANITY FAUCET

### Kohler Hint

Moderne Brushed Brass | Widespread | K-37893-4-2MB

## 5 VANITY SINK

### Kohler Caxton Rectangle

White | Undermount | K-20000-0

## 6 TILE - FLOORING & SHOWER WALL

### Floor: Marazzi Persuade Matte

Beige | 12x24

### Wall: Daltile Color Wheel Matte

Biscuit | 3x6

## 7 TUB/SHOWER FAUCET

### Kohler Pitch

Moderne Brushed Brass | K-TS97074-4G-2MB

## 8 BATHTUB

### Sterling Ensemble

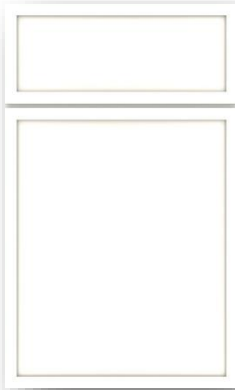
White | Model Number to be Verified in Field

## 9 TOILET

### Kohler Highline

White | Elongated Comfort Height | K-3999-0

1



2



3



4



5



6



7



8



9



# Designer Appointed Features | LAUNDRY ROOM

Designer Appointed Features are home details and finishes curated by the talented design professionals responsible for the distinctive looks found in our model homes.

## 1 CABINETS

### Mid-Continent Henri FO

Painted White | Full Overlay with Soft Close Doors

## 2 CABINETS HARDWARE

### Top Knobs Square Bar Pull

Honey Bronze

## 3 FLOORING

### Marazzi Persuade Matte

Beige | 12"x24"

1

2

3

