

Toll Brothers
AMERICA'S LUXURY HOME BUILDER®



TOLL BROTHERS AT SEMINOLE ISLE

Aloma Coastal

HOME SITE 40 | 9988 KEY HAVEN RD | SEMINOLE, FL 33777

Designer Appointed Features | EXTERIOR SELECTIONS

Designer Appointed Features are home details and finishes curated by the talented design professionals responsible for the distinctive looks found in our model homes.



1		BOARD & BATTEN Dover White SW 6385	3		FRONT DOOR Stardew SW 9138	5		WINDOWS White
2		STUCCO Buff SW 7683	4		GARAGE DOOR Dover White SW 6385	6		SHUTTERS Stardew SW 9138

TOLL BROTHERS AT SEMINOLE ISLE | ALOMA COASTAL
HOME SITE 40 | 9988 KEY HAVEN RD | SEMINOLE, FL 33777

Photographs, renderings, and floor plans are for representational purposes only and may not reflect the exact features or dimensions of your home; actual product may differ. All dimensions are subject to field variations. Prices and offers subject to change without notice. This is not an offering where prohibited by law. Not all images may be shown. See online or onsite Sales Consultants for details.



Designer Appointed Features | ARCHITECTURAL SELECTIONS

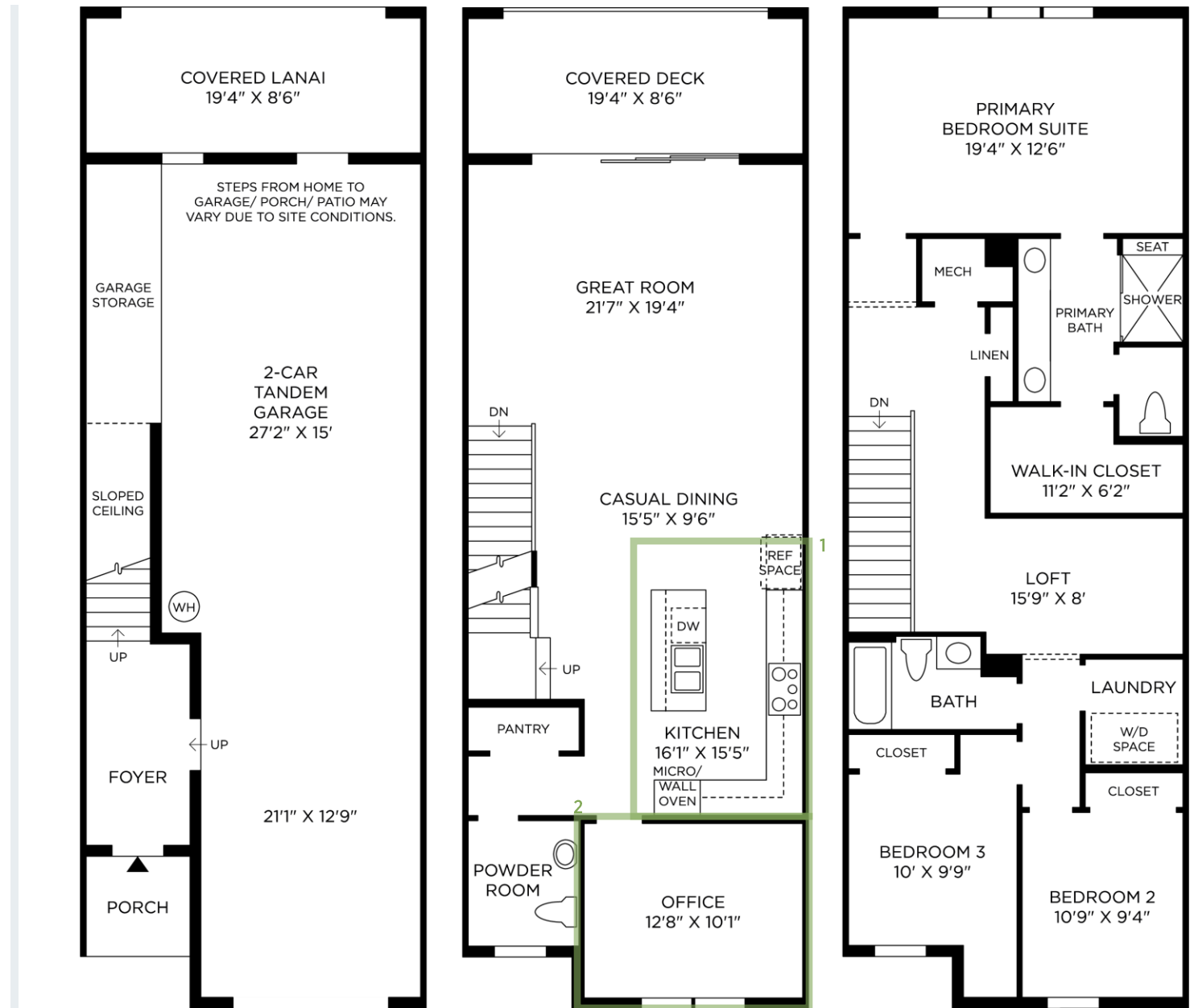
Designer Appointed Features are home details and finishes curated by the talented design professionals responsible for the distinctive looks found in our model homes.

1 ALTERNATE KITCHEN LAYOUT

PC263104

2 OFFICE

PC263300



Designer Appointed Features | INTERIOR FEATURES WITH EXTERIOR HARDWARE

Designer Appointed Features are home details and finishes curated by the talented design professionals responsible for the distinctive looks found in our model homes.

1 EXTERIOR HANDLESET

Kwikset San Clemente

Satin Nickel | 916 ZW Contemporary Smart Deadbolt

2 INTERIOR HANDLESET

Kwikset Halifax Lever

Satin Nickel

3 INTERIOR DOORS

Masonite

White | 2-Panel Square

4 INTERIOR PAINT - WALLS & CEILING

Sherwin Williams

Pure White | Flat

5 INTERIOR PAINT - TRIM

Sherwin Williams

Extra White | Semi-Gloss

6 LVP - 2ND FLOOR MAIN LIVING AND FLEX ROOM/STUDY

Shaw TB Domain

Pasadena

1



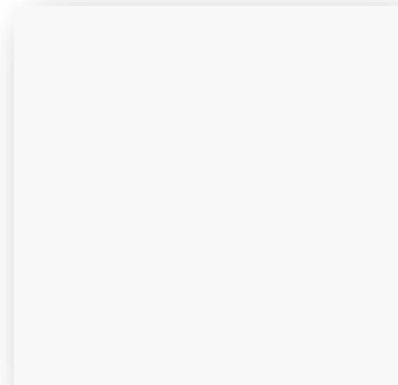
2



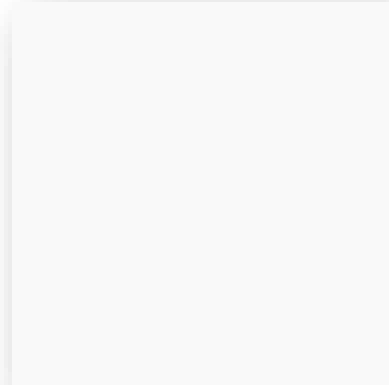
3



4



5



6



Designer Appointed Features | INTERIOR FEATURES WITH EXTERIOR DOOR HARDWARE

Designer Appointed Features are home details and finishes curated by the talented design professionals responsible for the distinctive looks found in our model homes.

1 LVP - 3RD FLOOR BEDROOMS AND LOFT

Shaw TB Domain
Pasadena

2 STAIR BALUSTERS

Straight Black Wrought Iron

3 NEWEL POST

4010G Modern Newel
Stain: Ebony

4 HANDRAIL

684 Handrail
Stain: Ebony

5 TREADS

Stained Red Oak with Painted Risers
Stain: Ebony | Paint: SW 7006 Extra White

6 STAIN COLOR

Ebony

1



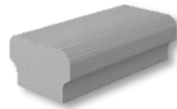
2



3



4



5



6



Designer Appointed Features | KITCHEN

Designer Appointed Features are home details and finishes curated by the talented design professionals responsible for the distinctive looks found in our model homes.

1 CABINETRY - PERIMETER

Mid-Continent Brawny

Icy Avalanche | Full Overlay with Soft Close Drawers and Doors

2 CABINETRY - ISLAND

Mid-Continent Brawny

Titanium | Full Overlay with Soft Close Drawers

3 CABINETRY HARDWARE

Top Knobs Ascendra Pull

Brushed Satin Nickel

4 COUNTERTOP

MSI Q Quartz

Calacatta Ultra | 3 cm

5 BACKSPLASH

MSI Q Quartz

Calacatta Ultra | 3 cm

6 FLOORING-LVP

Shaw TB Domain

Pasadena

7 FAUCET

Kohler Purist Semi-Pro

Vibrant Stainless Steel | Pull-Down | K-24982-VS

8 SINK

Kohler Vault

Stainless Steel | Single Bowl Undermount | K-3821-1

1



2



3



4



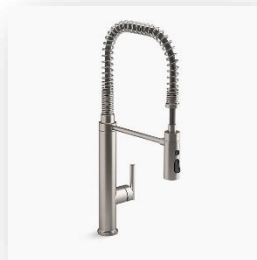
5



6



7



8



Design Elements | OPTIONAL WHIRLPOOL BUILT-IN ELECTRIC

Designer Appointed Features are home details and finishes curated by the talented design professionals responsible for the distinctive looks found in our model homes.

36" ELECTRIC COOKTOP, COMBO OVEN, HOOD, DISHWASHER

Phase 1 Option # PC112991

Phase 2 Option # APKK2005

(Envision APKK2005-1)

- 1 **36" Convertible Under-Cabinet Hood**
UXT5536AAS
 - 400 CFM exhaust rating
 - Dual-halogen worksurface
- 2 **36" Electric Ceramic Glass Cooktop with Dual Radiant Element**
WCE55US6HB
 - Easy-wipe ceramic glass cooktop
 - Warm zone element
 - 5-element cooktop
- 3 **Combo Wall Oven with Air Fry When Connected—Smart Wall Oven**
WOEC5030LZ
 - 6-in-1 wall oven with fan convection
 - 6.4 cu. ft. total capacity
 - Air-fry mode when connected
 - Automatic feature updates when connected
- 4 **Large-Capacity Dishwasher with Third Rack**
WDT75ISAPZ
 - 47 dBA
 - Stainless steel tub—5 cycles
 - 5 options
 - Top control



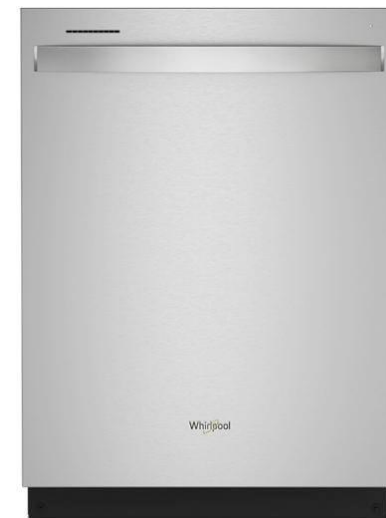
1



3



2



4



Design Elements | OPTIONAL WHIRLPOOL 36 " FREESTANDING REFRIGERATION

Designer Appointed Features are home details and finishes curated by the talented design professionals responsible for the distinctive looks found in our model homes.

1 WHIRLPOOL FRENCH DOOR

WRF555SDFZ

Option # PC112921 / APPR0005

- 25 cu. ft.
- Exterior ice and water
- Spillproof shelves
- Two-tier freezer storage
- Fingerprint resistant
- Energy Star

1



Designer Appointed Features | POWDER ROOM

Designer Appointed Features are home details and finishes curated by the talented design professionals responsible for the distinctive looks found in our model homes.

1 PEDESTAL SINK

Sterling Sacramento

White | Widespread | 442128-0

2 VANITY FAUCET

Kohler Hint

Brushed Nickel | Widespread | K-37893-4-BN

3 FLOORING-TILE

American Olean Montesano

White | 15x30

4 TOILET

Kohler Highline

White | Elongated | K-3999-0



1



2



3



4

Designer Appointed Features | PRIMARY BATHROOM

Designer Appointed Features are home details and finishes curated by the talented design professionals responsible for the distinctive looks found in our model homes.

1 CABINETRY

Mid-Continent Brawny

Icy Avalanche | Full Overlay with Soft Close Drawers

2 CABINETRY HARDWARE

Top Knobs Ascendra Pull

Brushed Satin Nickel

3 COUNTERTOP

MSI Q Quartz

Calacatta Ultra | 3cm

4 VANITY FAUCET

Kohler Hint

Brushed Nickel | Widespread | K-37893-4-BN

5 VANITY SINK

Kohler Caxton Rectangle

White | Undermount | K-20000-0

6 TILE - FLOOR & SHOWER WALL

Floor: American Olean Montesano

White | 15x30

Wall: Daltile Color Wheel Linear Gloss

Desert Gray | 4x16

7 SHOWER PAN

Kohler Rely

White Acrylic | K-8649-0

8 SHOWER ONLY FAUCET

Kohler Pitch

Brushed Nickel | K-TS97077-4G-BN

9 TOILET

Kohler Highline

White | Elongated Tall | K-3999-0



1



2



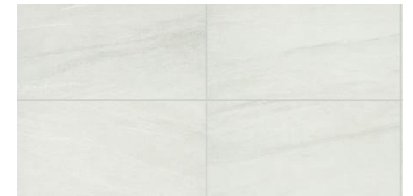
3



4



5



6



7



8



9

Designer Appointed Features | BATHROOM # 2

Designer Appointed Features are home details and finishes curated by the talented design professionals responsible for the distinctive looks found in our model homes.

1 CABINETRY

Mid-Continent Brawny

Icy Avalanche | Full Overlay with Soft Close Drawers

2 CABINETRY HARDWARE

Top Knobs Ascendra Pull

Brushed Satin Nickel

3 COUNTERTOP

MSI Q Quartz

Calacatta Ultra | 3cm

4 VANITY FAUCET

Kohler Hint

Brushed Nickel | Widespread | K-37893-4-BN

5 VANITY SINK

Kohler Caxton Rectangle

White | Undermount | K-20000-0

6 TILE - FLOORING & SHOWER WALL

Floor: American Olean Montesano

White | 15x30

Wall: Daltile Color Wheel Linear

Matte

White | 4x16

7 TUB/SHOWER FAUCET

Kohler Pitch

Brushed Nickel | K-TS97074-4G-BN

8 BATHTUB

Sterling Ensemble

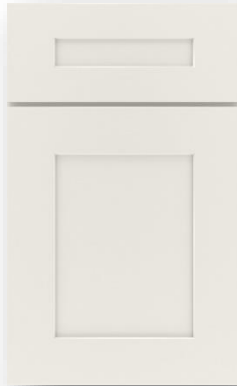
White

9 TOILET

Kohler Highline

White | Elongated Comfort Height | K-3999-0

1



2



3



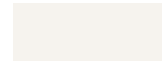
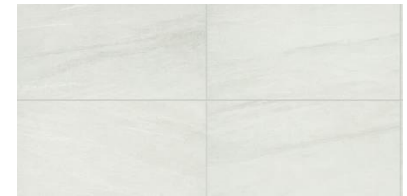
4



5



6



7



8



9



Designer Appointed Features | LAUNDRY

Designer Appointed Features are home details and finishes curated by the talented design professionals responsible for the distinctive looks found in our model homes.

1 CABINETS - PERIMETER

Mid-Continent Brawny

Icy Avalanche | Full Overlay with Soft Close Drawers and Doors

2 CABINETS - HARDWARE

Top Knobs Ascendra Pull

Brushed Satin Nickel

3 FLOORING - TILE

American Olean Montesano

White | 15x30



1



2



3