

Toll Brothers
AMERICA'S LUXURY HOME BUILDER®



TOLL BROTHERS AT SEMINOLE ISLE

Yellowfin Coastal

HOME SITE 2 | 7382 MARATHON ST | SEMINOLE, FL 33777

Designer Appointed Features | EXTERIOR SELECTIONS

Designer Appointed Features are home details and finishes curated by the talented design professionals responsible for the distinctive looks found in our model homes.



1		BOARD & BATTEN Dover White SW 6385	3		FRONT DOOR Stardew SW 9138	5		WINDOWS White
2		STUCCO Buff SW 7683	4		GARAGE DOOR Dover White SW 6385	6		SHUTTERS Stardew SW 9138

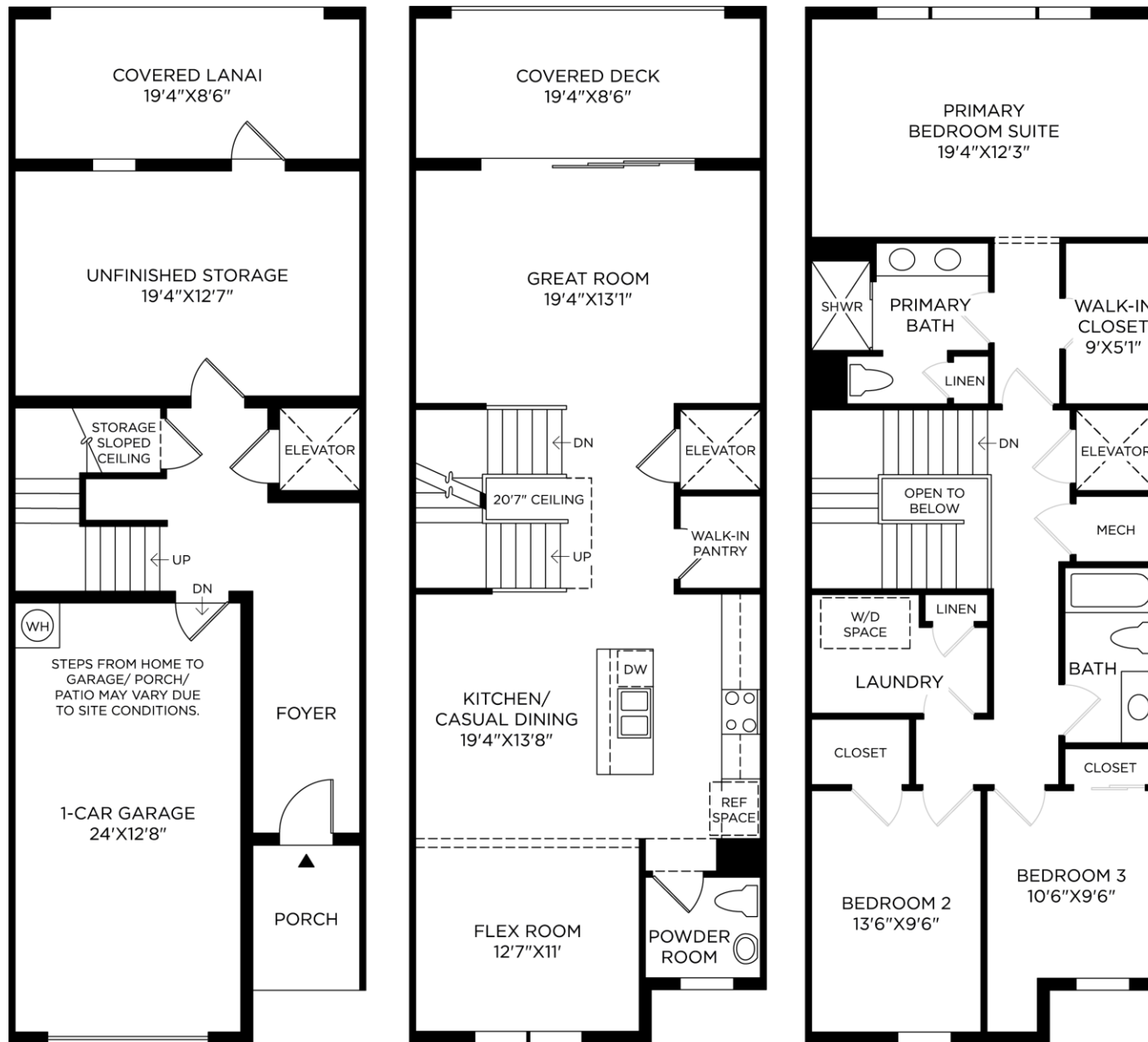
TOLL BROTHERS AT SEMINOLE ISLE | YELLOWFIN COASTAL
HOME SITE 2 | 7382 MARATHON ST | SEMINOLE, FL 33777

Photographs, renderings, and floor plans are for representational purposes only and may not reflect the exact features or dimensions of your home; actual product may differ. All dimensions are subject to field variations. Prices and offers subject to change without notice. This is not an offering where prohibited by law. Not all images may be shown. See online or onsite Sales Consultants for details.



Designer Appointed Features | ARCHITECTURAL SELECTIONS

Designer Appointed Features are home details and finishes curated by the talented design professionals responsible for the distinctive looks found in our model homes.



Designer Appointed Features | INTERIOR FEATURES WITH EXTERIOR HARDWARE

Designer Appointed Features are home details and finishes curated by the talented design professionals responsible for the distinctive looks found in our model homes.

1 EXTERIOR HANDLESET

Kwikset San Clemente

Matte Black | 916 ZW Contemporary Smart Deadbolt

2 INTERIOR HANDLESET

Kwikset Halifax Lever

Matte Black

3 INTERIOR DOORS

Masonite

White | 2-Panel Square

4 INTERIOR PAINT – WALLS & CEILING

Sherwin Williams

Pure White | Flat

5 INTERIOR PAINT – TRIM

Sherwin Williams

Extra White | Semi-Gloss

6 LVP- SECOND FLOOR MAIN LIVING & FLEX ROOM

Shaw TB Pride Plus

Riverside

1



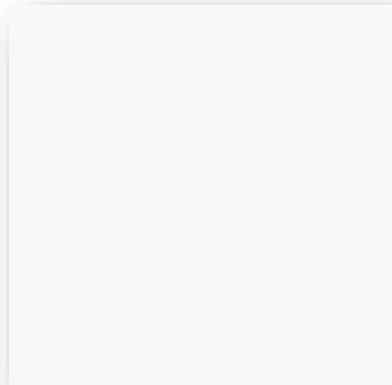
2



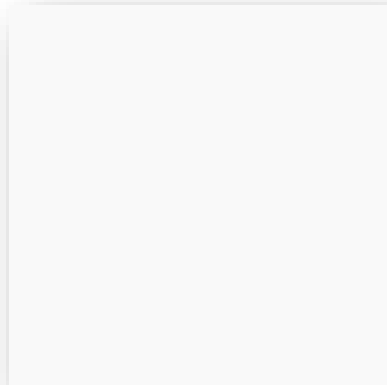
3



4



5



6



Designer Appointed Features | INTERIOR FEATURES WITH EXTERIOR DOOR HARDWARE

Designer Appointed Features are home details and finishes curated by the talented design professionals responsible for the distinctive looks found in our model homes.

1 LVP – 3RD FLOOR BEDROOMS AND LOFT

Shaw TB Pride Plus

Riverside

2 STAIR BALUSTERS

Straight Black Wrought Iron

3 NEWEL POST

4010G Modern Newel

Stain: Ebony

4 HANDRAIL

684 Handrail

Stain: Ebony

5 TREADS

Stained Red Oak with Painted Risers

Stain: Ebony | Paint: SW 7006 Extra White

6 STAIN COLOR

Ebony

1



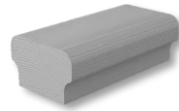
2



3



4



5



6



Designer Appointed Features | KITCHEN

Designer Appointed Features are home details and finishes curated by the talented design professionals responsible for the distinctive looks found in our model homes.

1 CABINETRY - PERIMETER

Mid-Continent Dapper

Buckskin - Full Overlay with Soft Close Drawers and Doors

2 CABINETRY - ISLAND

Mid-Continent Dapper

Buckskin- Full Overlay with Soft Close Doors

3 CABINETRY HARDWARE

Top Knobs Hopewell Bar Pull

Flat Black

4 COUNTERTOP

MSI Q Quartz

Carrara Breve | 3 cm

5 BACKSPLASH

MSI Q Quartz

Carrara Breve | 3 cm

6 FLOORING-ENGINEERED WOOD

Anderson Worthing II

Holland Park

7 FAUCET

Kohler Crue

Matte Black | Pull-Down | K-22972-BL

8 SINK

Sterling McAlister

Stainless Steel | Single Bowl Undermount | 11600-NA SS

1



2



3



4



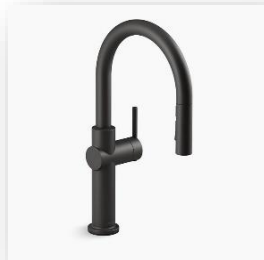
5



6



7



8



Design Elements | OPTIONAL WHIRLPOOL BUILT-IN ELECTRIC

Designer Appointed Features are home details and finishes curated by the talented design professionals responsible for the distinctive looks found in our model homes.

36" ELECTRIC COOKTOP, COMBO OVEN, HOOD, DISHWASHER

Phase 1 Option # PC112991

Phase 2 Option # APKK2005

(Envision APKK2005-1)

- 1 **36" Convertible Under-Cabinet Hood**
UXT5536AAS
 - 400 CFM exhaust rating
 - Dual-halogen worksurface
- 2 **36" Electric Ceramic Glass Cooktop with Dual Radiant Element**
WCE55US6HB
 - Easy-wipe ceramic glass cooktop
 - Warm zone element
 - 5-element cooktop
- 3 **Combo Wall Oven with Air Fry When Connected—Smart Wall Oven**
WOEC5030LZ
 - 6-in-1 wall oven with fan convection
 - 6.4 cu. ft. total capacity
 - Air-fry mode when connected
 - Automatic feature updates when connected
- 4 **Large-Capacity Dishwasher with Third Rack**
WDT751SAPZ
 - 47 dBA
 - Stainless steel tub—5 cycles
 - 5 options
 - Top control



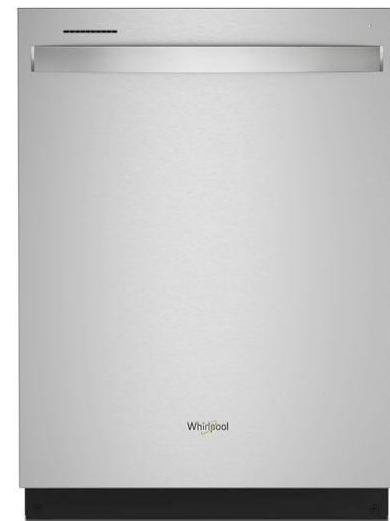
1



3



2



4



Design Elements | OPTIONAL WHIRLPOOL 36 " FREESTANDING REFRIGERATION

Designer Appointed Features are home details and finishes curated by the talented design professionals responsible for the distinctive looks found in our model homes.

1 WHIRLPOOL FRENCH DOOR

WRF555SDFZ

Option # PC112921 / APPR0005

- 25 cu. ft.
- Exterior ice and water
- Spillproof shelves
- Two-tier freezer storage
- Fingerprint resistant
- Energy Star

1



Designer Appointed Features | POWDER ROOM

Designer Appointed Features are home details and finishes curated by the talented design professionals responsible for the distinctive looks found in our model homes.

1 PEDESTAL SINK

Sterling Sacramento

White | Widespread | 442128-0

2 VANITY FAUCET

Kohler Hint

Matte Black | Widespread | K-27893-4-BL

3 FLOORING - TILE

Marazzi Moroccan Concrete

Off White | 8" Hexagon

4 TOILET

Kohler Highline

White | Elongated Comfort Height | K-3999-0

1



2



3



4



Designer Appointed Features | PRIMARY BATHROOM

Designer Appointed Features are home details and finishes curated by the talented design professionals responsible for the distinctive looks found in our model homes.

1 CABINETRY

Mid-Continent Dapper

Buckskin | Full Overlay with Soft Close Doors

2 CABINETRY HARDWARE

Top Knobs Hopewell Bar Pull

Flat Black

3 COUNTERTOP

MSI Q Quartz

Carrara Breve | 3cm

4 VANITY FAUCET

Kohler Hint

Matte Black | Widespread | K-37893-4-BL

5 VANITY SINK

Kohler Caxton Rectangle

White | Undermount | K-20000-0

6 TILE - FLOOR & SHOWER WALL

Floor: Marazzi Moroccan

Concrete

Off White | 8" Hexagon

Wall: Daltile Mesmerist

Trance | 3x12

7 SHOWER PAN

Kohler Rely

White | Acrylic Base with Center Drain

8 SHOWER ONLY FAUCET

Kohler Pitch

Matte Black | K-TS97077-4G-BL

9 TOILET

Kohler Highline

White | Elongated Comfort Height | K-3999-0

1



2



3



4



5



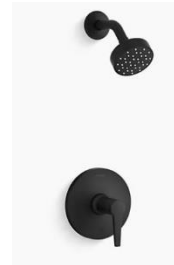
6



7



8



9



Designer Appointed Features | BATHROOM # 2

Designer Appointed Features are home details and finishes curated by the talented design professionals responsible for the distinctive looks found in our model homes.

1 CABINETRY

Mid-Continent Dapper

Buckskin | Full Overlay with Soft Close Doors

2 CABINETRY HARDWARE

Top Knobs Hopewell Bar Pull

Flat Black

3 COUNTERTOP

MSI Q Quartz

Carrara Breve | 3cm

4 VANITY FAUCET

Kohler Hint

Matte Black | Widespread | K-37893-4-BL

5 VANITY SINK

Kohler Caxton Rectangle

White | Undermount | K-20000-0

6 TILE - FLOORING & SHOWER WALL

Floor: Marazzi Moroccan

Concrete

Off White | 8" Hexagon

Wall: Daltile Color Wheel Matte

Biscuit | 3x6

7 TUB/SHOWER FAUCET

Kohler Pitch

Matte Black | K-TS97074-4G-BL

8 BATHTUB

Sterling Ensemble

White | Model Number to be Verified in Field

9 TOILET

Kohler Highline

White | Elongated Comfort Height | K-3999-0

1



2



3



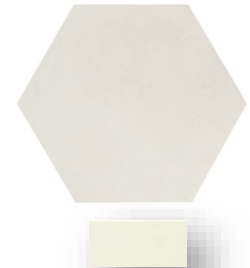
4



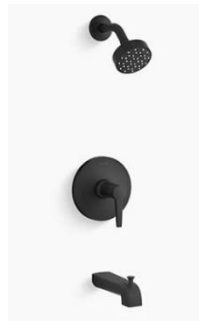
5



6



7



8



9



Designer Appointed Features | LAUNDRY

Designer Appointed Features are home details and finishes curated by the talented design professionals responsible for the distinctive looks found in our model homes.

1 CABINETS

Mid-Continent Dapper

Buckskin | Full Overlay with Soft Close Doors

2 CABINETS HARDWARE

Top Knobs Hopewell Bar Pull

Flat Black

3 FLOORING - TILE

Marazzi Moroccan Concrete

Off White | 8" Hexagon

1



2



3

