

*Toll Brothers*  
AMERICA'S LUXURY HOME BUILDER®



HOLLY FARM | HIGHLANDS COLLECTION

# Payton Modern Farmhouse

HOME SITE 66 | 1188 RIDGEVIEW ROAD | WOODSTOCK, GA 30188



# Designer Appointed Features | EXTERIOR SELECTIONS

Designer Appointed Features are home details and finishes curated by the talented design professionals responsible for the distinctive looks found in our model homes.

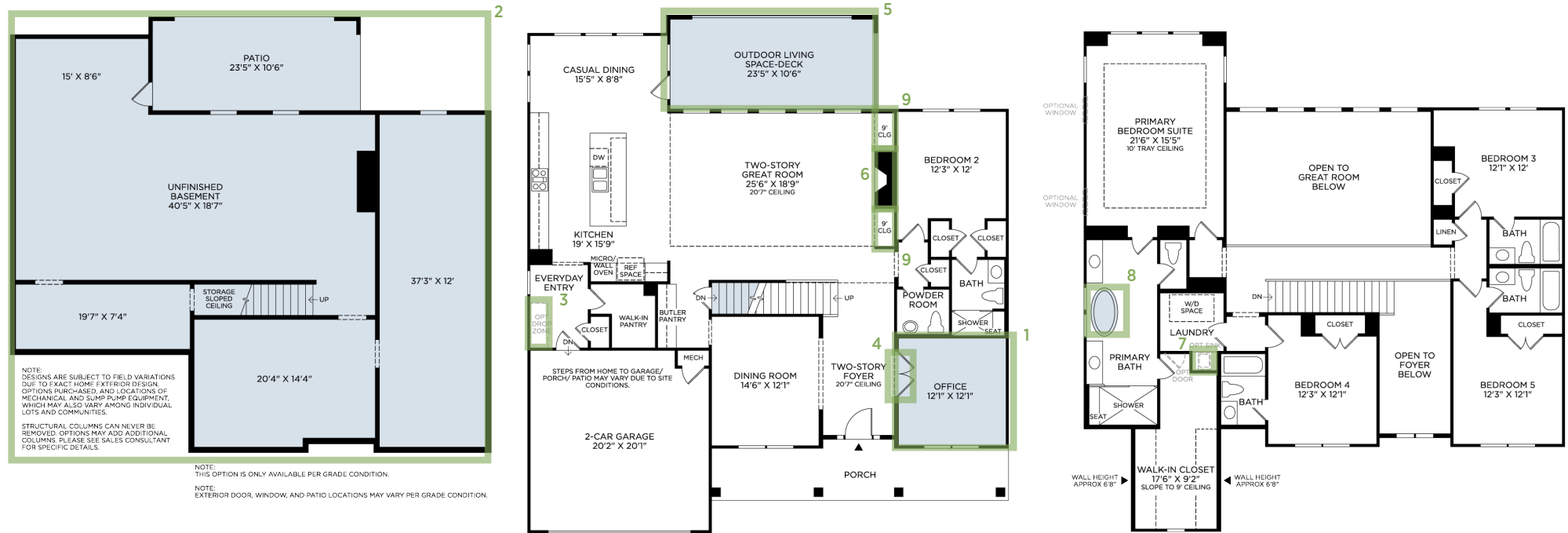


1		<b>PRIMARY</b> GOSSAMER VEIL / #SW-9165	3		<b>FRONT DOOR</b> WALNUT	5		<b>BRICK</b> CORDOBA / SOUTHERN IVORY	7		<b>ROOF</b> CHARCOAL	9		<b>GUTTERS</b> BRONZE
2		<b>TRIM</b> EIDER WHITE / #SW-7014	4		<b>GARAGE DOOR</b> EIDER WHITE / #SW-7014	6		<b>CEDAR</b> CHARWOOD	8		<b>BOARD &amp; BATTEN</b> GOSSAMER VEIL / #SW-9165	10		<b>WINDOWS</b> WHITE



# Designer Appointed Features | ARCHITECTURAL SELECTIONS

Designer Appointed Features are home details and finishes curated by the talented design professionals responsible for the distinctive looks found in our model homes.



**1 OFFICE**  
PC266300

**2 WALK-OUT BASEMENT**  
PC017

**3 DROP ZONE**  
PC132162

**4 DOUBLE FULL LITE DOOR**  
PC026668

**5 OUTDOOR LIVING SPACE**  
PC263168

**6 UPGRADE 42" FIREPLACE**  
PC106104

**7 LAUNDRY ROOM SINK**  
PC048385

**8 REPLACE INCLUDED TUB**  
PC048414

**9 BUILT-IN GREAT ROOM**  
PC036504



# Designer Appointed Features | EXTERIOR SELECTIONS

Designer Appointed Features are home details and finishes curated by the talented design professionals responsible for the distinctive looks found in our model homes.

## 1 SIDING

**Sherwin Williams**  
GOSSAMER VEIL / #SW-9165

## 2 BOARD AND BATTEN

**Sherwin Williams**  
GOSSAMER VEIL / #SW-9165

## 3 TRIM

**Sherwin Williams**  
EIDER WHITE / #SW-7014

## 4 ROOF

**Architectural Shingles**  
CHARCOAL

## 5 METAL ROOF

**Metal Works**  
DARK BRONZE

## 6 BRICK

**North GA**  
CORDOBA / SOUTHERN IVORY

## 7 WINDOWS

**Vinyl**  
WHITE

## 8 GARAGE

**Sherwin Williams**  
EIDER WHITE / #SW-7014

## 9 FRONT DOOR

**Minwax Gel Stain**  
WALNUT

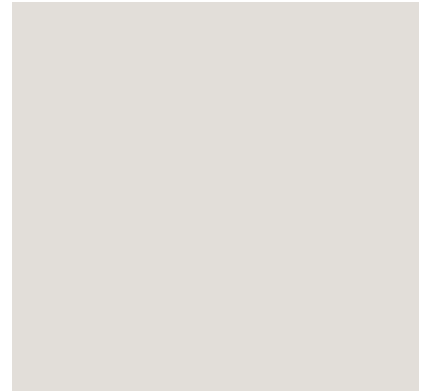
1



2



3



4



5



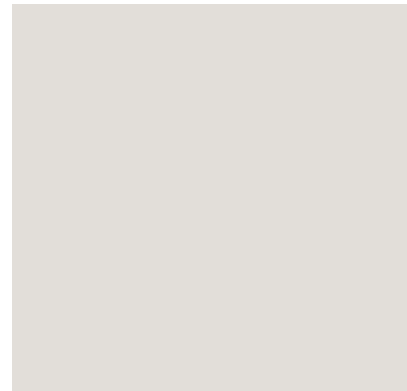
6



7



8



9



# Designer Appointed Features | INTERIOR SELECTIONS

Designer Appointed Features are home details and finishes curated by the talented design professionals responsible for the distinctive looks found in our model homes.

## 1 WALL PAINT

**Sherwin Williams**  
ALABASTER / #SW-7008

## 2 INTERIOR DOORS

**Sherwin Williams**  
EXTRA WHITE / #SW-7006

## 3 INTERIOR DOOR HANDLES

**Kwikset**  
HANCOCK KNOB - MATTE BLACK

## 4 FLOORING-CARPET

**Shaw**  
STONE PATH / SUGAR COOKIE

## 5 FLOORING-HARDWOOD

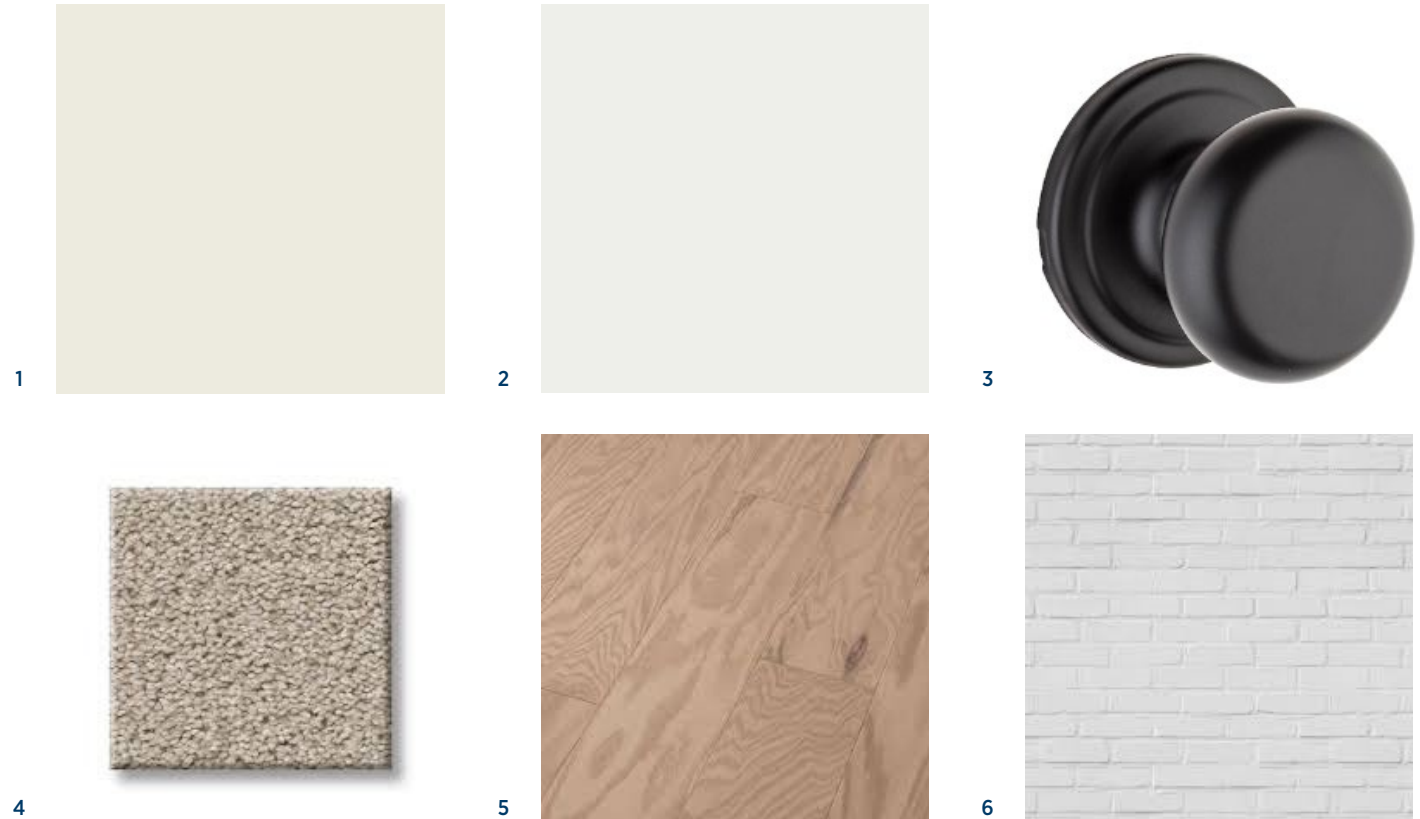
**Shaw**  
5" Engineered / 8.2MM Thickness / OPEN PORTAL II  
/ BISCUIT

## 6 FIREPLACE

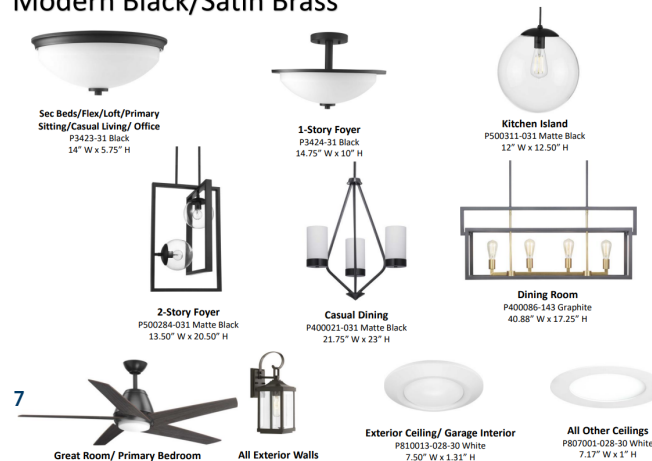
**Painted Brick**  
FLOOR TO CEILING / EXTRA WHITE / #SW-7006

## 7 LIGHTING

**Progress**  
MODERN WITHOUT VANITY LIGHTS / BLACK /  
SATIN BRASS



## Modern Black/Satin Brass



# Designer Appointed Features | KITCHEN

Designer Appointed Features are home details and finishes curated by the talented design professionals responsible for the distinctive looks found in our model homes.

## 1 CABINETS

### Diamond Vibe

PERIMETER - BRYANT MAPLE W/ 5 PC DRAWER FRONTS / WHITE  
ISLAND - BRYANT MAPLE W/ 5 PC DRAWER FRONTS / THATCH

## 2 HARDWARE

### Jeffery Alexander

625-128-MB

## 3 COUNTERTOP-ISLAND

### Quartzite

POLISHED VANCOUVER

## 4 COUNTERTOP-PERIMETER

### Silestone

POLISHED MIAMI WHITE

## 5 BACKSPLASH

### Emser

3 X 12 SILVER GLOSSY / RAKU

## 6 FLOORING-HARDWOOD

### Shaw

5" Engineered / 8.2MM Thickness / OPEN PORTAL II / BISCUIT

## 7 FAUCET

### Kohler

CRUE K-22974-WB-BL

## 8 SINK

### Kohler

8206-CM1 CAIRN MATTE BLACK / SINGLE BOWL SINK

## 9 LIGHTING-ISLAND

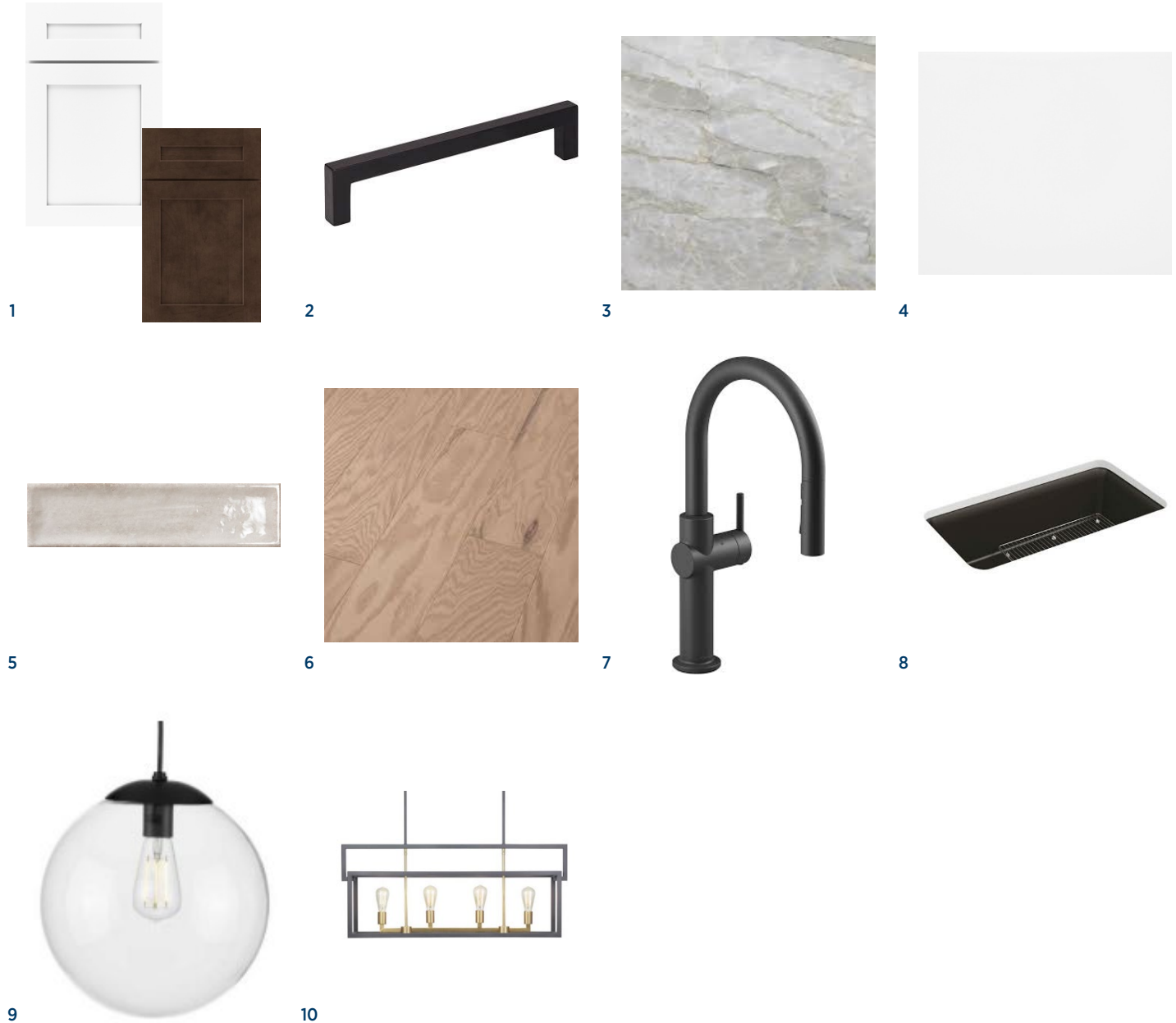
### Progress

MODERN WITHOUT VANITY LIGHTS / BLACK / SATIN BRASS

## 10 LIGHTING-DINING

### Progress

MODERN WITHOUT VANITY LIGHTS / BLACK / SATIN BRASS



# Designer Appointed Features | KITCHEN APPLIANCES

Designer Appointed Features are home details and finishes curated by the talented design professionals responsible for the distinctive looks found in our model homes.

## 1 DISHWASHER

**KitchenAid**  
KDTM405PPS

## 2 RANGE

**KitchenAid**  
KCGC506JSS

## 3 VENT HOOD

**KitchenAid**  
KVUC606KSS

## 4 WALL OVEN

**KitchenAid**  
KOED530PSS

## 5 MICROWAVE

**KitchenAid**  
KMBD104GSS

1



2



3



4



5



# Designer Appointed Features | POWDER ROOM

Designer Appointed Features are home details and finishes curated by the talented design professionals responsible for the distinctive looks found in our model homes.

## 1 PEDESTAL SINK

**Kohler**  
ARCHER

## 2 FAUCET

**Kohler**  
HINT/PITCH / SINGLEHOLE / BL

## 3 TOILET

**Sterling**  
WINDHAM

## 4 FLOORING

**Shaw**  
5" Engineered / 8.2MM Thickness / OPEN PORTAL II  
/ BISCUIT

1



2



3



4





# Designer Appointed Features | PRIMARY BATHROOM

Designer Appointed Features are home details and finishes curated by the talented design professionals responsible for the distinctive looks found in our model homes.

## 1 VANITY CABINETS

**Diamond Vibe**  
WESTBURKE MAPLE / WHITE

## 2 HARDWARE

**Jeffrey Alexander**  
625-128-MB

## 3 COUNTERTOP

**Hi Macs**  
NORDIC WHITE

## 4 FAUCET

**Kohler**  
HINT/PITCH / WIDESPREAD / BL

## 5 SINK

**Kohler**  
K-20000 CAXTON RECTANGLE UNDERMOUNT

## 6 SHOWER TILE—WALLS

**Emser**  
3 X 12 SILVER GLOSSY / RAKU

## 7 SHOWER TILE—FLOOR

**Emser**  
12 X 24 CREAM / CIUDAD

## 8 SHOWER FIXTURES

**Kohler**  
HINT/PITCH / WIDESPREAD / BL

## 9 TUB

**Kohler**  
SUNSTRUCK

## 10 TUB FAUCET

**Kohler**  
HINT/PITCH / BL

## 11 TOILET

**Sterling**  
WINDHAM



1



2



3



4



5



6



7



8



9



10



11

# Designer Appointed Features | DOWN FULL BATHROOM

Designer Appointed Features are home details and finishes curated by the talented design professionals responsible for the distinctive looks found in our model homes.

## 1 VANITY CABINETS

**Diamond Vibe**  
WESTBURKE MAPLE / WHITE

## 2 HARDWARE

**Jeffrey Alexander**  
625-128-MB

## 3 COUNTERTOP

**Hi Macs**  
NORDIC WHITE

## 4 FAUCET

**Kohler**  
HINT/PITCH / SINGLEHOLE / BL

## 5 SINK

**Kohler**  
K-20000 CAXTON RECTANGLE UNDERMOUNT

## 6 SHOWER TILE—WALLS

**Emser**  
12 X 24 CREAM / CIUDAD

## 7 SHOWER TILE—FLOOR

**Emser**  
12 X 24 CREAM / CIUDAD

## 8 SHOWER FIXTURES

**Kohler**  
HINT/PITCH / SINGLEHOLE / BL

## 9 TOILET

**Sterling**  
WINDHAM



# Designer Appointed Features | BEDROOM #3, #4 & #5 BATHROOM

Designer Appointed Features are home details and finishes curated by the talented design professionals responsible for the distinctive looks found in our model homes.

## 1 VANITY CABINETS

**Diamond Vibe**  
WESTBURKE MAPLE / WHITE

## 2 HARDWARE

**Jeffrey Alexander**  
625-128-MB

## 3 COUNTERTOP

**Hi Macs**  
NORDIC WHITE

## 4 FAUCET

**Kohler**  
HINT/PITCH / SINGLEHOLE / BL

## 5 SINK

**Kohler**  
K-20000 CAXTON RECTANGLE UNDERMOUNT

## 6 SHOWER TILE—WALLS

**Shaw**  
3 X 6 MATTE 100 WHITE / BAKER BLVD

## 7 SHOWER TILE—FLOOR

**Emser**  
200 / RESURGENCE HEX

## 8 SHOWER FIXTURES

**Kohler**  
HINT/PITCH / SINGLEHOLE / BL

## 9 TOILET

**Sterling**  
WINDHAM

