

Toll Brothers
AMERICA'S LUXURY HOME BUILDER®



HEIGHTS AT ERIE TOWN CENTER

Tamarac Modern

HOME SITE 129 | 706 PUNTER STREET | ERIE, CO 80516

Designer Appointed Features | EXTERIOR SELECTIONS

Designer Appointed Features are home details and finishes curated by the talented design professionals responsible for the distinctive looks found in our model homes.



- 1



B&B / PANEL SIDING
Snowbound
SW 7004
- 2



STONE
Cream Tivoli Panel
- 3



FRONT DOOR
Tricorn Black
SW 6258
- 4



GARAGE DOOR
Night Owl
SW 7061
- 5



FASCIA/ SOFFITS/ EAVES/ACCENT
Iron Ore
SW 7069
- 6



ALTERNATING LAP SIDING
Night Owl
SW 7061
- 7



ROOF
Charcoal
GAF Timberline
- 8



WINDOWS
White

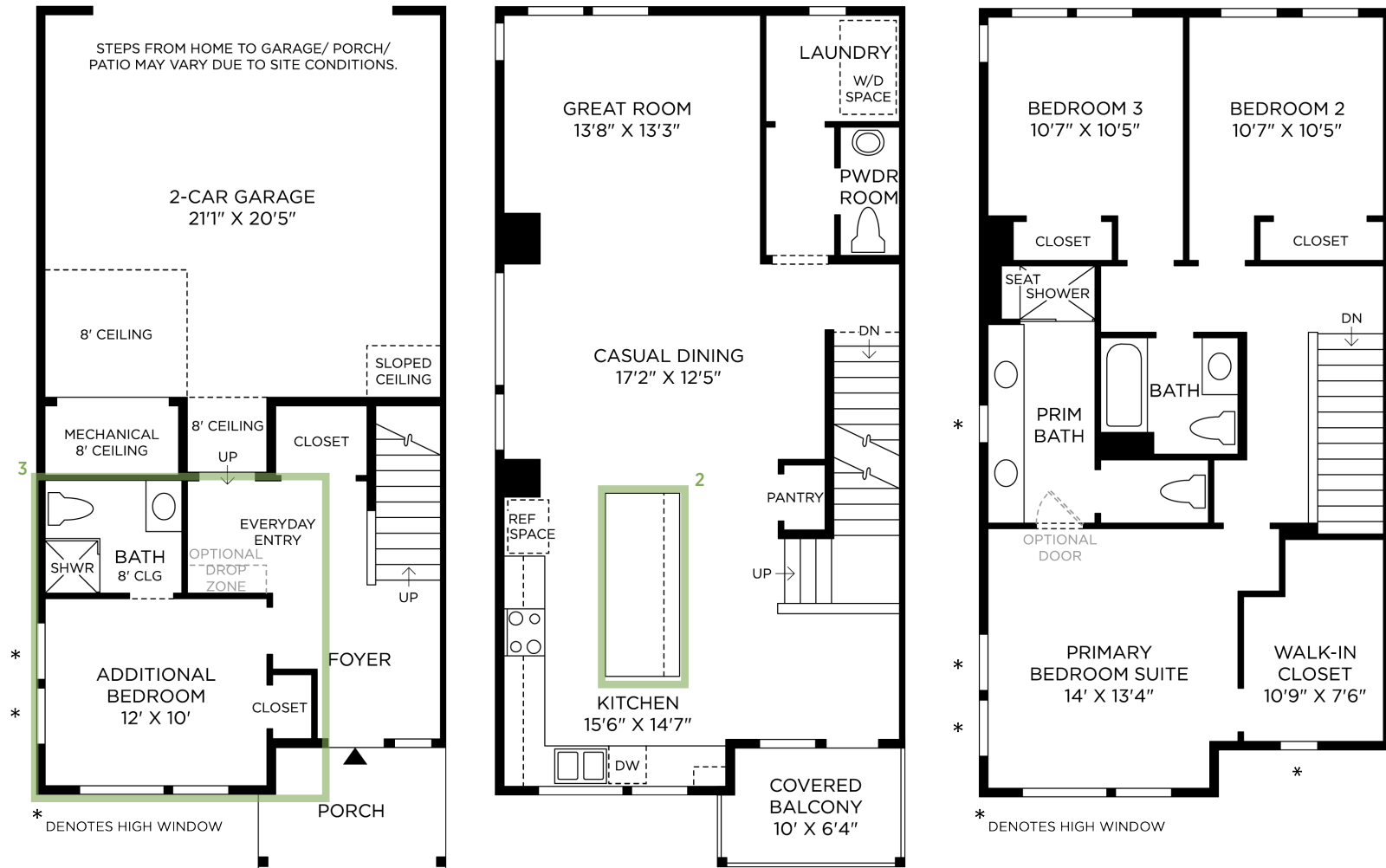
HEIGHTS AT ERIE TOWN CENTER | TAMARAC MODERN
HOME SITE 129 | 706 PUNTER STREET | ERIE, CO 80516

Photographs, renderings, and floor plans are for representational purposes only and may not reflect the exact features or dimensions of your home; actual product may differ. All dimensions are subject to field variations. Prices and offers subject to change without notice. This is not an offering where prohibited by law. Not all images may be shown. See online or onsite Sales Consultants for details.



Designer Appointed Features | ARCHITECTURAL SELECTIONS

Designer Appointed Features are home details and finishes curated by the talented design professionals responsible for the distinctive looks found in our model homes.



1 OPEN RAIL/HORIZONTAL RAIL

201 (not shown)

3 BEDROOM ILO OFFICE

263050

2 ALTERNATE ISLAND

263149

Designer Appointed Features | EXTERIOR SELECTIONS

Designer Appointed Features are home details and finishes curated by the talented design professionals responsible for the distinctive looks found in our model homes.

1 FRONT DOOR

Therma Tru
Per Exterior Scheme | 8' 0" 2 Panel Design

1



Designer Appointed Features | INTERIOR SELECTIONS

Designer Appointed Features are home details and finishes curated by the talented design professionals responsible for the distinctive looks found in our model homes.

1 WALL PAINT

Sherwin Williams
SW7005 | Pure White

2 INTERIOR DOORS

Raised 2 Panel Design
Height per plan | Hollow Core

3 INTERIOR DOOR HANDLES

Kwikset 'Halifax'
Satin Nickel | Lever Style

4 INTERIOR TRIM

Flatline Style
SW7005 Pure White | 5" H Base, 3 1/4" W Casing

5 STAIR RAILING

Horizontal Iron
Matte Black | Midnight Black Stain

6 FLOORING-WATERPROOF CORE

Shaw 'Home' Series
Genuine Greige | 9" x 60" Plank

7 FLOORING-CARPET

Shaw 'Enchantment'
Sandstone | Looped Pattern

8 LIGHTING

Stairwell Wall Sconce
Color | Brushed Nickel



1



2



3



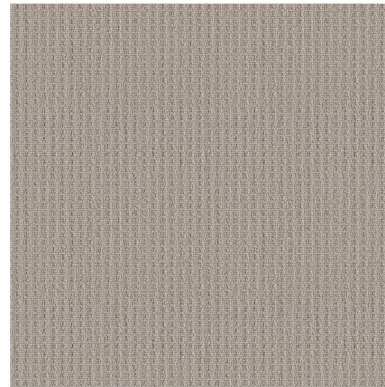
4



5



6



7



8

Designer Appointed Features | KITCHEN

Designer Appointed Features are home details and finishes curated by the talented design professionals responsible for the distinctive looks found in our model homes.

1 CABINETS

Mastercraft 'Haxton'
Sea Salt | Slab Style

2 HARDWARE

Mastercraft HW 206 SN
Satin Nickel | Bar Pull

3 COUNTERTOP-ISLAND

AZT 'Aviana' Quartz Slab
3CM | Polished Finish

4 COUNTERTOP-PERIMETER

AZT 'Aviana' Quartz Slab
3CM | Polished Finish

5 BACKSPLASH

AZT 'Concerto' Series
Greige Glossy | 2" x 9" Straight Stacked

6 FLOORING-WATERPROOF CORE

Shaw 'Home' Series
Genuine Greige | 9" x 60" Plank

7 FAUCET

Kohler 'Crue' Konnect
Vibrant Stainless | Touchless Faucet

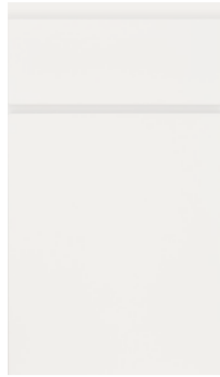
8 SINK

Kohler 'Vault' K-3821
Stainless Steel | Single Bowl

9 LIGHTING-ISLAND

Pendant Lighting (x3)
Brushed Nickel

1



2



3



4



5



6



7



8



9



Designer Appointed Features | KITCHEN APPLIANCES

Designer Appointed Features are home details and finishes curated by the talented design professionals responsible for the distinctive looks found in our model homes.

1 SLIDE-IN RANGE

5 Burner Gas, Convection Range
Stainless Steel | 30"

2 VENT HOOD

Kitchen Aid Under Cabinet
Stainless Steel | 30" | 585 CFM

3 DISHWASHER

Kitchen Aid D/W
Stainless Steel

4 MICROWAVE DRAWER

Kitchen Aid
Stainless Steel | 1.2 CU FT

5 REFRIGERATOR

Kitchen Aid – Counter Depth
Stainless Steel | 20 CU FT

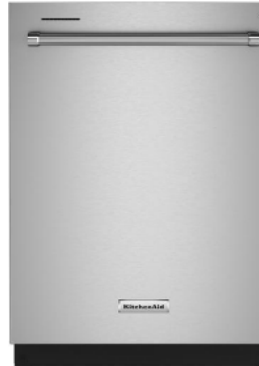
1



2



3



4



5



Designer Appointed Features | POWDER ROOM

Designer Appointed Features are home details and finishes curated by the talented design professionals responsible for the distinctive looks found in our model homes.

1 PEDESTAL SINK

Kohler - Archer
White | 24" W

2 FAUCET

Kohler 'Hint' Series
Brushed Nickel

3 TOILET

Kohler 'Highline'
White | Comfort Height

4 FLOORING-WATERPROOF CORE

Shaw 'Home' Series
Genuine Greige | 9" x 60" Plank

5 BATH ACCESSORIES

Taymor 'Maxwell'
Satin Nickel | Per Plan

1



2



3



4



5



Designer Appointed Features | PRIMARY BATHROOM

Designer Appointed Features are home details and finishes curated by the talented design professionals responsible for the distinctive looks found in our model homes.

1 VANITY CABINETS

Mastercraft 'Haxton'
Sea Salt | Slab Style

2 HARDWARE

Mastercraft HW 206 SN
Satin Nickel | Bar Pull

3 COUNTERTOP

AZT 'Aviana' Quartz Slab
3CM | Polished Finish

4 FAUCET

Kohler 'Hint' Series
Brushed Nickel

5 SINK

Kohler 'Caxton' Rectangular
White | Undermount

6 SHOWER TILE—WALLS

AZT 'Paloma' Series
Cloud Glossy | 4" x 16"

7 SHOWER TILE—FLOOR

AZT 'Cosmic' Series
White | 2" x 2" Mosaic

8 FLOORING - TILE

AZT 'Cosmic' Series
White | 12" x 24"

9 TOILET

Kohler 'Highline'
White | Comfort Height

10 SHOWER ENCLOSURE

'Estate' (Frameless)
Clear Glass | Satin Nickel Trim

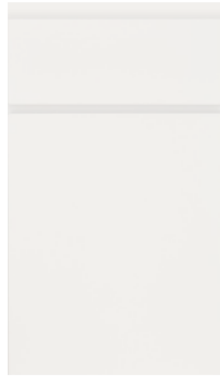
11 BATH ACCESSORIES

Taymor 'Maxwell'
Satin Nickel | Per Plan

12 LIGHTING

Vanity Lighting – (x2)
Brushed Nickel

1



2



3



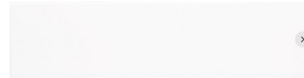
4



5



6



7



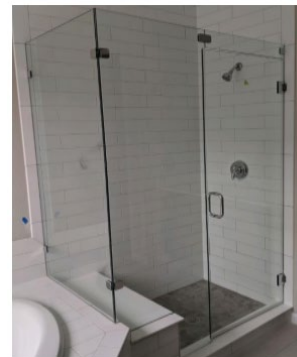
8



9



10



11



12



Designer Appointed Features | ROOM NAME

Designer Appointed Features are home details and finishes curated by the talented design professionals responsible for the distinctive looks found in our model homes.

1 VANITY CABINETS

Mastercraft 'Haxton'
Sea Salt | Slab Style

2 HARDWARE

Mastercraft HW 206 SN
Satin Nickel | Bar Pull

3 COUNTERTOP

AZT 'White Sand' Quartz Slab
3CM | Polished Finish

4 FAUCET

Kohler 'Hint' Series
Brushed Nickel

5 SINK

Kohler 'Caxton' Rectangular
White | Undermount

6 TUB / SHOWER TILE — WALLS

AZT 'Paloma' Series
Cloud Glossy | 4" x 16"

7 FLOORING—WATERPROOF CORE

Shaw 'Home' Series
Genuine Greige | 9" x 60" Plank

8 SHOWER ENCLOSURE (BATH 3)

By-Pass Configuration
70" H | 3/16" Thick Clear Glass | Brushed Nickel

9 TUB (BATH 2)

Sterling — 60" x 29"
White | Vikrell

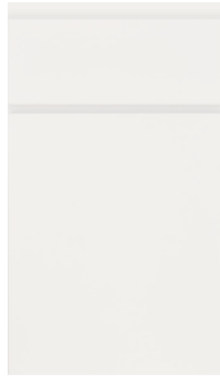
10 TOILET

Kohler 'Highline'
White | Comfort Height

11 BATH ACCESSORIES

Taymor 'Maxwell'
Satin Nickel | Per Plan

1



2



3



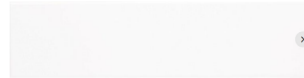
4



5



6



7



8



9



10



11

