

*Toll Brothers*  
AMERICA'S LUXURY HOME BUILDER®



WOODSIDE PRESERVE

# Cali Contemporary

HOME SITE 6 | 191 WOODGROVE DR | ORLANDO, FL 32825

# Designer Appointed Features | EXTERIOR SELECTIONS

Designer Appointed Features are home details and finishes curated by the talented design professionals responsible for the distinctive looks found in our model homes.



- |   |   |                                     |   |   |  |   |  |   |   |   |                      |
|---|---|-------------------------------------|---|---|--|---|--|---|---|---|----------------------|
| 1 |  | <b>BODY</b><br>Snowbound<br>SW 7004 | 3 |  | <b>FRONT DOOR</b><br>Smoky Blue<br>SW 7604 | 5 |  | <b>SIDING</b><br>Monorail Silver<br>SW 7663 | 7 |  | <b>STONE</b><br>Onyx |
| 2 |  | <b>TRIM</b><br>Snowbound<br>SW 7004 | 4 |  | <b>GARAGE DOOR</b><br>Snowbound<br>SW 7004 | 6 |  | <b>ROOF</b><br>Charcoal<br>GAF Timberline   |   |   |                      |

WOODSIDE PRESERVE | CALI CONTEMPORARY  
HOME SITE 6 | 191 WOODGROVE DR | ORLANDO, FL 32825

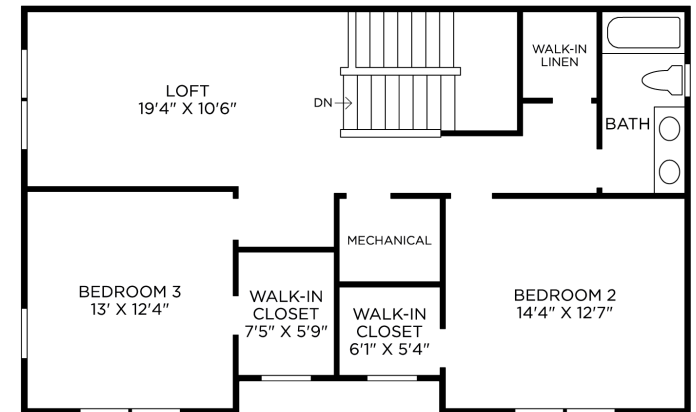
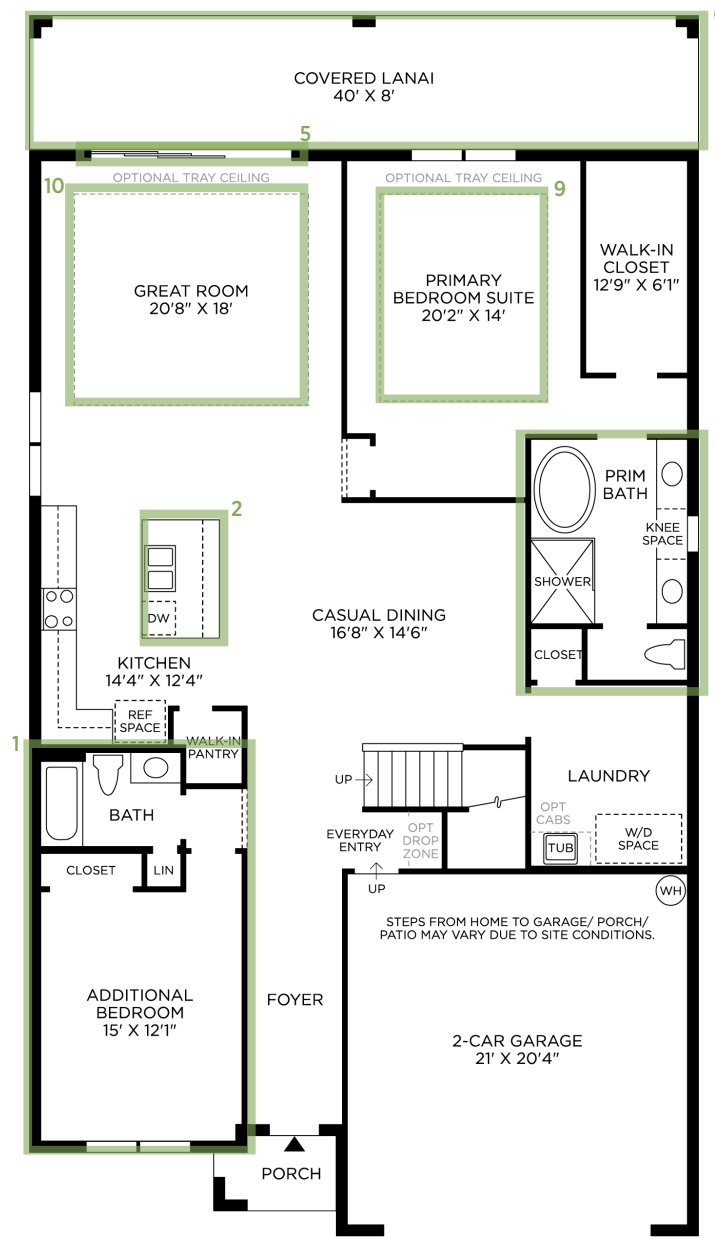
Photographs, renderings, and floor plans are for representational purposes only and may not reflect the exact features or dimensions of your home; actual product may differ. All dimensions are subject to field variations. Prices and offers subject to change without notice. This is not an offering where prohibited by law. Not all images may be shown. See online or onsite Sales Consultants for details.



# Designer Appointed Features | ARCHITECTURAL SELECTIONS

Designer Appointed Features are home details and finishes curated by the talented design professionals responsible for the distinctive looks found in our model homes.

- 1 ADDITIONAL BEDROOM**  
263049
- 2 ALTERNATE KITCHEN ISLAND**  
263149
- 3 ALTERNATE PRIMARY BATH**  
263120
- 4 OPEN RAILING**  
036405 (not shown)
- 5 MULTI-SLIDE STACKED DOOR 12X8**  
026365
- 6 EXTENDED COVERED LANAI**  
263553
- 7 SEC BATH - SHOWER STALL W/ TILE FLOOR**  
048644 (not shown)
- 8 8' INTERIOR DOORS**  
026036 (not shown)
- 9 TRAY CEILING IN PRIMARY BEDROOM**  
036487
- 10 TRAY CEILING IN GREAT ROOM**  
036491



# Designer Appointed Features | INTERIOR SELECTIONS

Designer Appointed Features are home details and finishes curated by the talented design professionals responsible for the distinctive looks found in our model homes.

## 1 WALL PAINT

Sherwin Williams  
Extra White | Flat

## 2 INTERIOR DOORS

2 Panel Raised  
Extra White |

## 3 INTERIOR DOOR HANDLES

Kwikset Halifax Lever  
Matte Black

## 4 FLOORING - TILE

Daltile Persuade  
#PS41 Beige 12x24

## 5 FLOORING - CARPET

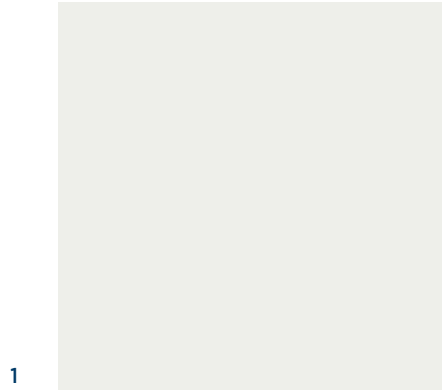
Shaw TB Enchantment  
107 Natural Wood

## 6 FLOORING - WOOD

Shaw Homeland Oak 6-3/8"  
1154 Heritage

## 7 FLOORING - LVP

Shaw Homestead  
7032 Wingback Brown



1



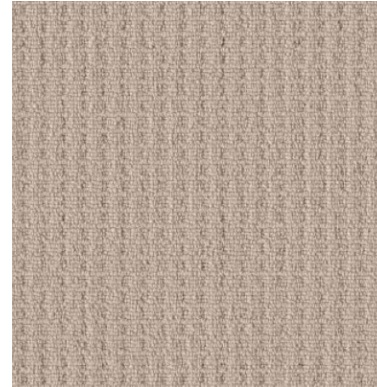
2



3



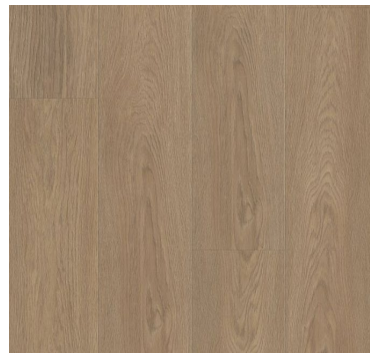
4



5



6



7

# Designer Appointed Features | LIGHTING

Designer Appointed Features are home details and finishes curated by the talented design professionals responsible for the distinctive looks found in our model homes.

## 1 LIGHTING

Progress Lighting Atwell  
Brushed Bronze | Kitchen Island

## 2 LIGHTING

Progress Lighting Bonita  
Brushed Bronze | Kitchen Island

## 3 LIGHTING

Progress Lighting Elevate  
Brushed Bronze | Baths

Progress Lighting Elevate  
Brushed Bronze | Baths



1



2



3

# Designer Appointed Features | APPLIANCES

Designer Appointed Features are home details and finishes curated by the talented design professionals responsible for the distinctive looks found in our model homes.

## 1 COOKTOP

KitchenAid Electric Cooktop  
Stainless Steel | 36"

## 2 VENT HOOD

KitchenAid Vent Hood  
Stainless Steel | 36"

## 3 MICROWAVE/OVEN COMBO

KitchenAid Combo Wall  
Stainless Steel |

## 4 DISHWASHER

KitchenAid Dishwasher  
Stainless Steel | 24"

## 5 FRIDGE

KitchenAid Dishwasher  
Stainless Steel | 36" Counter Depth

## 6 WASHER & DRYER

Whirlpool Washer & Electric  
Dryer  
White



1



2



3



4



5



6

Riverside Oaks  
Lot 126 – Fredrick Elite

Photographs, renderings, and floor plans are for representational purposes only and may not reflect the exact features or dimensions of your home; actual product may differ. All dimensions are subject to field variations. Prices and offers subject to change without notice. This is not an offering where prohibited by law. Not all images may be shown. See online or onsite Sales Consultants for details.



# Designer Appointed Features | KITCHEN

Designer Appointed Features are home details and finishes curated by the talented design professionals responsible for the distinctive looks found in our model homes.

## 1 CABINETS

Mid Continent Dapper FO  
Painted Maple | White

## 2 HARDWARE

Amerock Monument  
Champagne Bronze | Pull

## 3 COUNTERTOP

MSI Quartz  
Calacatta Elysio | Polished - Eased Edge

## 4 BACKSPLASH

Daltile Miramo Mosaic  
MR44 Pearl | 1x6 Stack

## 5 FLOORING - LVP

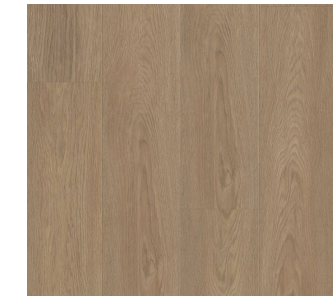
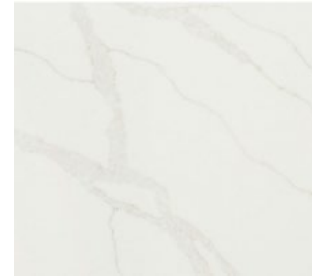
Shaw Homestead  
7032 Wingback Brown

## 6 FAUCET

Kohler Crue  
Moderne Brass | Pull Down Spray

## 7 SINK

Kohler Vault  
Stainless Steel | Single Basin



# Designer Appointed Features | PRIMARY BATHROOM

Designer Appointed Features are home details and finishes curated by the talented design professionals responsible for the distinctive looks found in our model homes.

## 1 VANITY CABINETS

Mid Continent Dapper FO  
Painted Maple | White

## 2 HARDWARE

Amerock Monument  
Champagne Bronze | Pull

## 3 COUNTERTOP

MSI Quartz  
Frost White | Polished - Eased Edge

## 4 FAUCET

Kohler Hint/Pitch  
Moderne Brass

## 5 SINK

Kohler Caxton  
White | Oval Undermount

## 6 SHOWER TILE—WALLS

Daltile Persuade  
#PS40 White 12x24

## 7 SHOWER TILE—FLOOR

Daltile Persuade  
#PS41 1x3 Brickset

## 8 SHOWER FIXTURES

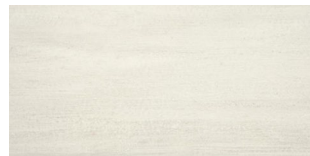
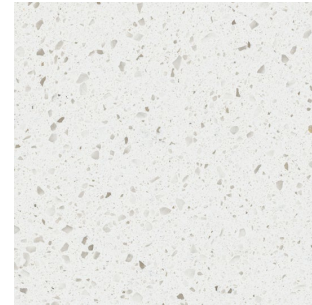
Kohler Hint/Pitch  
Moderne Brass

## 9 BATH FLOOR TILE

Daltile Persuade  
#PS41 Beige 12x24

## 10 TOILET

Kohler Windham  
White | Standard Height



# Designer Appointed Features | BATH DOWN

Designer Appointed Features are home details and finishes curated by the talented design professionals responsible for the distinctive looks found in our model homes.

## 1 VANITY CABINETS

Mid Continent Dapper FO  
Painted Maple | White

## 2 HARDWARE

Amerock Monument  
Champagne Bronze | Pull

## 3 COUNTERTOP

MSI Quartz  
Frost White | Polished - Eased Edge

## 4 FAUCET

Kohler Hint/Pitch  
Moderne Brass

## 5 SINK

Kohler Caxton  
White | Oval Undermount

## 6 SHOWER TILE—WALLS

Daltile Persuade  
#PS40 White 12x24

## 7 SHOWER TILE—FLOOR

Daltile Persuade  
#PS40 1x3 Brickset

## 8 SHOWER FIXTURES

Kohler Hint/Pitch  
Moderne Brass

## 9 BATH FLOOR TILE

Daltile Persuade  
#PS41 Beige 12x24

## 10 TOILET

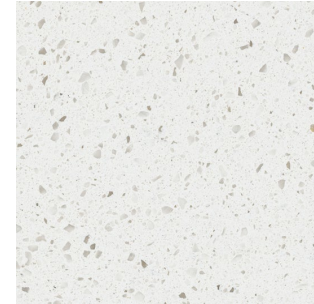
Kohler Windham  
White | Standard Height



1



2



3



4



5



6



7



8



9



10

# Designer Appointed Features | BATH UP

Designer Appointed Features are home details and finishes curated by the talented design professionals responsible for the distinctive looks found in our model homes.

## 1 VANITY CABINETS

Mid Continent Dapper FO  
Painted Maple | White

## 2 HARDWARE

Amerock Monument  
Champagne Bronze | Pull

## 3 COUNTERTOP

MSI Quartz  
Frost White | Polished - Eased Edge

## 4 FAUCET

Kohler Hint/Pitch  
Moderne Brass

## 5 SINK

Kohler Caxton  
White | Oval Undermount

## 6 SHOWER TILE—WALLS

Daltile Persuade  
#PS40 White 12x24

## 7 TUB

Sterling Performa  
White

## 8 SHOWER FIXTURES

Kohler Hint/Pitch  
Moderne Brass

## 9 BATH FLOOR TILE

Daltile Persuade  
#PS41 Beige 12x24

## 10 TOILET

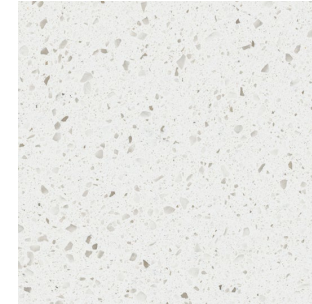
Kohler Windham  
White | Standard Height



1



2



3



4



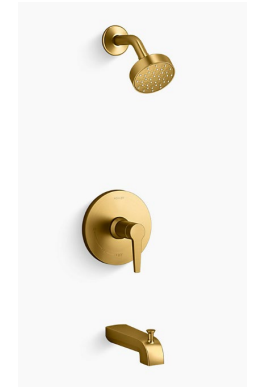
5



6



7



8



9



10

# Designer Appointed Features | LAUNDRY

Designer Appointed Features are home details and finishes curated by the talented design professionals responsible for the distinctive looks found in our model homes.

## 1 VANITY CABINETS

Mid Continent Dapper FO  
Painted Maple | White

## 2 HARDWARE

Amerock Monument  
Champagne Bronze | Pull

## 3 COUNTERTOP

MSI Quartz  
Frost White | Polished - Eased Edge

## 4 SINK

Sterling Latitude  
White | Top Mount

## 5 FAUCET

Kohler Jolt  
Chrome |

## 6 FLOORING - LVP

Shaw Homestead  
7032 Wingback Brown

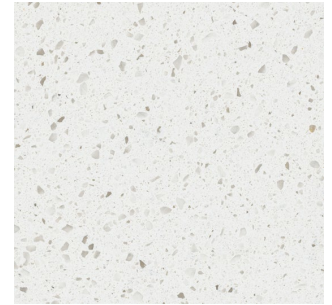
1



2



3



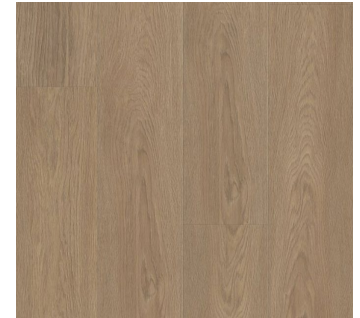
4



5



6



# Designer Appointed Features | MISC.

Designer Appointed Features are home details and finishes curated by the talented design professionals responsible for the distinctive looks found in our model homes.

## 1 STAIR SPINDLES & NEWEL POST

Straight Painted White & Box  
Newel Post

## 2 FRONT DOOR HARDWARE

San Clemente  
Black

1



2

