

*Toll Brothers*  
AMERICA'S LUXURY HOME BUILDER®



NORTHBROOKE

# Hendricks Fairview

HOME SITE 4 | 6240 BANNISTER VIEW CT | CUMMING, GA 30028



# Designer Appointed Features | EXTERIOR SELECTIONS

Designer Appointed Features are home details and finishes curated by the talented design professionals responsible for the distinctive looks found in our model homes.



1



## BOARD & BATTEN

Gossamer Veil  
SW 9165

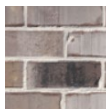
3



## FRONT DOOR

Iron Ore  
SW 7069

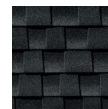
5



## BRICK

Mocha Select

7



## ROOF

Charcoal  
GAF

2



## TRIM

Eider White  
SW 7014

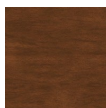
4



## GARAGE DOOR

Eider White  
SW 7014

6



## WOOD STAIN

Hawthorne  
SW 3518

8



## METAL ROOF

Dark Bronze

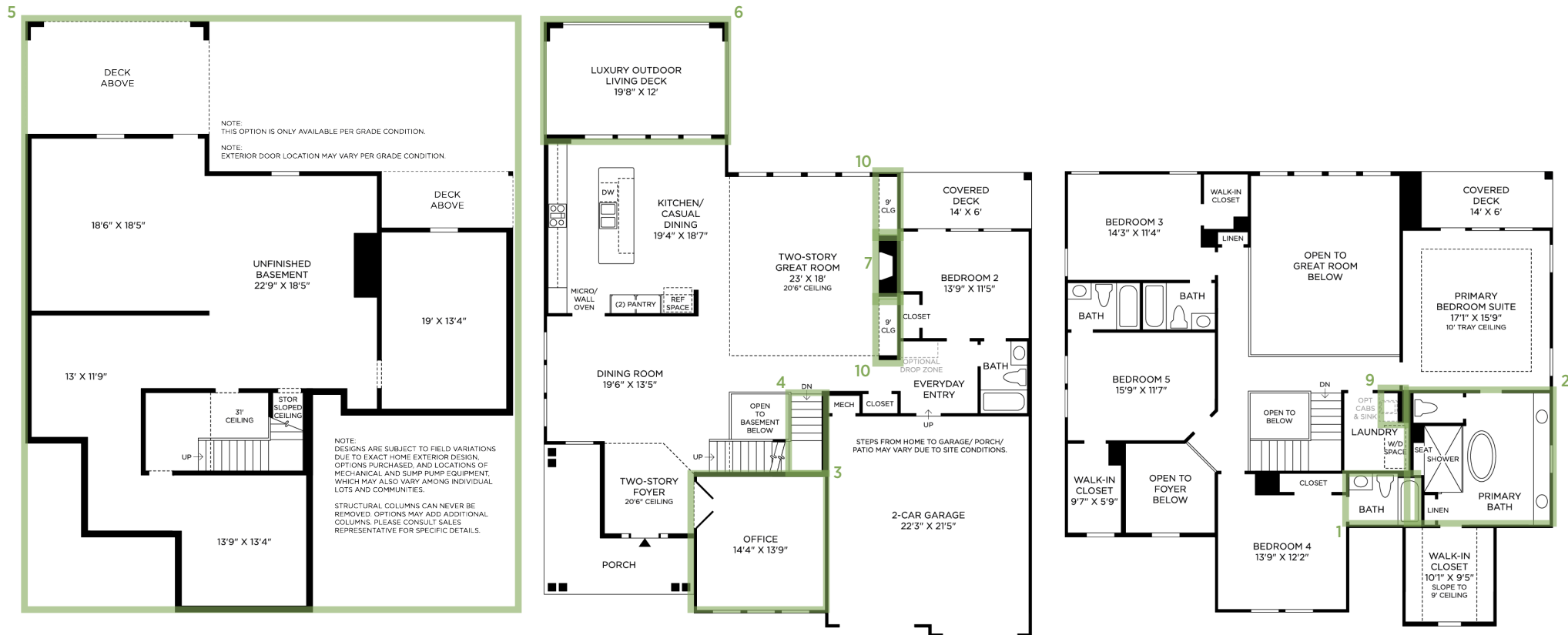
**NORTHBROOKE | HENDRICKS FAIRVIEW**  
**HOME SITE 4 | 6240 BANNISTER VIEW CT | CUMMING, GA 30028**

Photographs, renderings, and floor plans are for representational purposes only and may not reflect the exact features or dimensions of your home; actual product may differ. All dimensions are subject to field variations. Prices and offers subject to change without notice. This is not an offering where prohibited by law. Not all images may be shown. See online or onsite Sales Consultants for details.



# Designer Appointed Features | ARCHITECTURAL SELECTIONS

Designer Appointed Features are home details and finishes curated by the talented design professionals responsible for the distinctive looks found in our model homes.



1 ADDITIONAL BATH

3 OFFICE

5 WALKOUT BASEMENT

8 CONVERT SECONDARY BATH TO SHOWER WITH TILE SURROUND (not shown)

2 ALTERNATE PRIMARY BATH

4 OPEN STAIRS TO LOWER LEVEL

6 OUTDOOR LIVING SPACE

9 LAUNDRY ROOM SINK WITH CABINET

7 TRADITIONAL FIREPLACE 42" NOVUS

10 BUILT-IN AT GREAT ROOM

# Designer Appointed Features | EXTERIOR SELECTIONS

Designer Appointed Features are home details and finishes curated by the talented design professionals responsible for the distinctive looks found in our model homes.

## 1 SIDING

**Sherwin Williams**

Gossamer Veil | #SW-9165

## 2 SHAKES

**Sherwin Williams**

Gossamer Veil | #SW-9165

## 3 TRIM

**Sherwin Williams**

Eider White | #SW-7014

## 4 ROOF

**Architectural**

Charcoal

## 5 CEDAR BEAMS

**Woodscapes**

Hawthorn

## 6 BRICK

**North GA Brick**

Mocha Select | Coosa Cream

## 7 WINDOWS

**White Vinyl**

## 8 GARAGE

**Sherwin Williams**

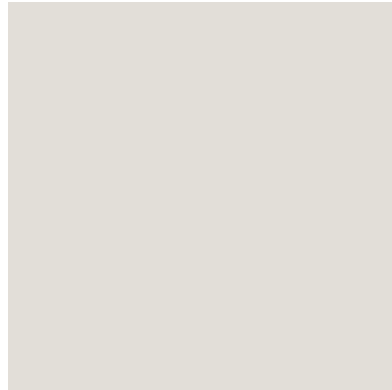
Eider White | #SW-7014

## 9 FRONT DOOR

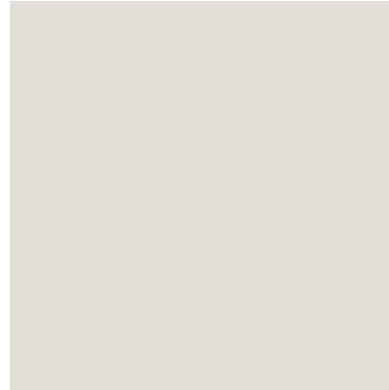
**Sherwin Williams**

Iron Ore | #SW-7069

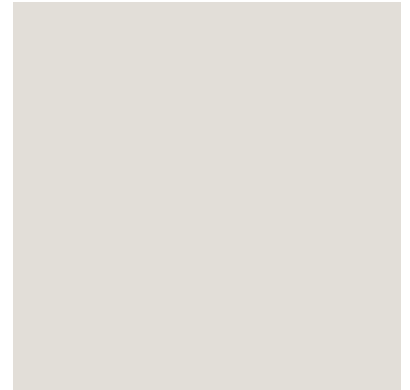
1



2



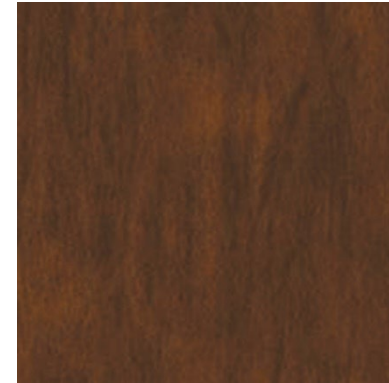
3



4



5



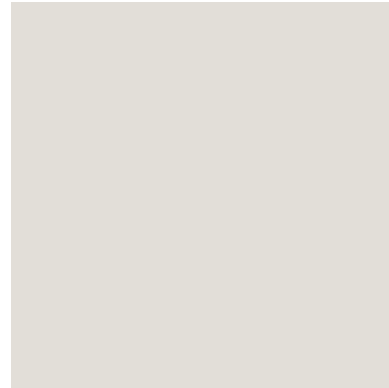
6



7



8



9





# Designer Appointed Features | INTERIOR SELECTIONS

Designer Appointed Features are home details and finishes curated by the talented design professionals responsible for the distinctive looks found in our model homes.

## 1 WALL PAINT

**Sherwin Williams**

Alabaster | SW-7008

## 2 INTERIOR DOORS

**Sherwin Williams**

Extra White | SW-7006

## 3 INTERIOR DOOR HANDLES

**Kwikset**

Matte Black | Hancock Knob

## 4 FLOORING-CARPET

**Shaw**

Sugar Cookie | Stone Path

## 5 FIREPLACE

**Dal Tile**

Fabric Art Textile Beige | 12 x 24

## 6 FLOORING-HARDWOOD

**Shaw**

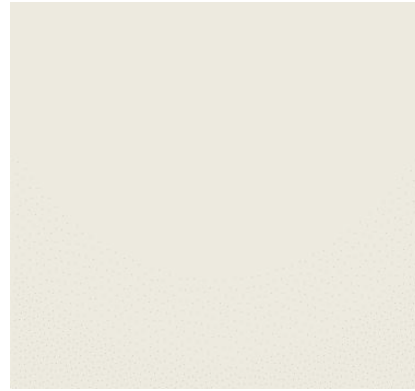
Anthem | Homeland Oak

## 7 LIGHTING

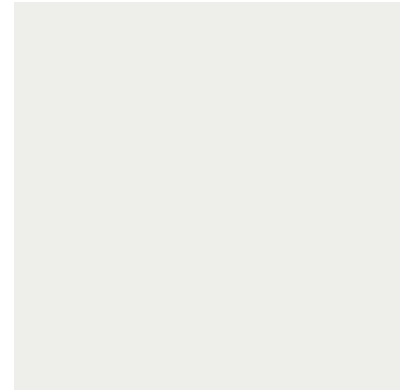
**Progress**

Modern | Gold

1



2



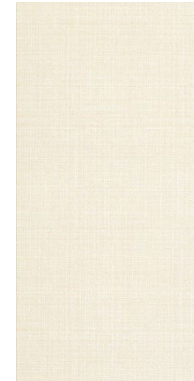
3



4



5



6



7



# Designer Appointed Features | KITCHEN

Designer Appointed Features are home details and finishes curated by the talented design professionals responsible for the distinctive looks found in our model homes.

## 1 CABINETS

### Diamond Vibe

Buckskin | Bryant 5PC

## 2 HARDWARE

### Jeffrey Alexander

136BG

## 3 CABINET-ISLAND

### Diamond Vibe

Buckskin | Bryant 5PC

## 4 COUNTERTOP-PERIMETER

### Silestone

ET Glow| 3CM

## 5 BACKSPLASH

### Dal Tile

Mythology Santorini Picket

## 6 FLOORING-HARDWOOD

### Shaw

Anthem | Homeland Oak

## 7 FAUCET

### Kohler

Gold | Crue

## 8 SINK

### Kohler

Stainless | Single Bowl

## 9 LIGHTING-ISLAND

### Progress

Modern | Gold

## 10 LIGHTING-DINING

### Progress

Modern | Gold



1



2



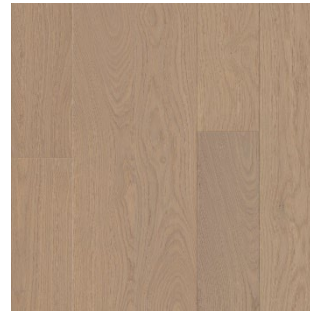
3



4



5



6



7



8



9



10

# Designer Appointed Features | KITCHEN APPLIANCES

Designer Appointed Features are home details and finishes curated by the talented design professionals responsible for the distinctive looks found in our model homes.

## 1 RANGE

**KitchenAid**  
KCGC506JSS

## 2 VENT HOOD

**KitchenAid**  
KVUC606KSS

## 3 WALL OVEN

**KitchenAid**  
KOED530PSS

## 4 MICROWAVE

**KitchenAid**  
KMBD104GSS

## 5 DISHWASHER

**KitchenAid**  
KDTM405PPS



1



2



3



4



5

# Designer Appointed Features | PRIMARY BATHROOM

Designer Appointed Features are home details and finishes curated by the talented design professionals responsible for the distinctive looks found in our model homes.

## 1 VANITY CABINETS

**Diamond Vibe**

Buckskin | Westburke

## 2 HARDWARE

**Jeffrey Alexander**

136BG

## 3 COUNTERTOP

**Hi-Macs**

Nordic White

## 4 FAUCET

**Kohler**

Gold | Hint / Pitch

## 5 SINK

**Kohler**

Caxton | Rectangle Undermount

## 6 SHOWER TILE—WALLS

**Dal Tile**

4 x 16 190 White Color Wheel

## 7 BATHROOM TILE—FLOOR

**Dal Tile**

Fabric Art Textile Beige

## 8 SHOWER FIXTURES

**Kohler**

Gold | Hint / Pitch

## 9 TUB FAUCET

**Kohler**

Gold | Hint / Pitch

## 10 TOILET

**Sterling**

White | Windham

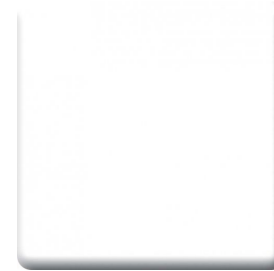
1



2



3



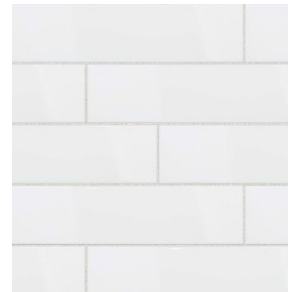
4



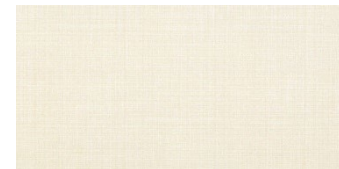
5



6



7



8



9



10





# Designer Appointed Features | SECONDARY BATHROOMS

Designer Appointed Features are home details and finishes curated by the talented design professionals responsible for the distinctive looks found in our model homes.

## 1 VANITY CABINETS

**Diamond Vibe**

Buckskin | Westburke

## 2 HARDWARE

**Jeffrey Alexander**

136BG

## 3 COUNTERTOP

**Hi Macs**

Nordic White

## 4 FAUCET

**Kohler**

Gold | Hint / Pitch

## 5 SINK

**Kohler**

Caxton | Rectangle Undermount

## 6 SHOWER TILE—WALLS

**Dal Tile**

4 x 12 Mythology Undulated Santorini

## 7 BATHROOM TILE—FLOOR

**Marazzi**

12 x 24 Moroccan Concrete Off White

## 8 SHOWER FIXTURES

**Kohler**

Gold | Hint / Pitch

## 9 TOILET

**Sterling**

White | Windham

1



2



3



4



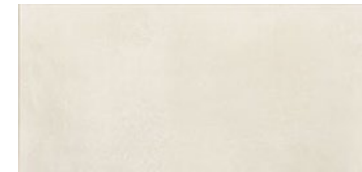
5



6



7



8



9

