

*Toll Brothers*  
AMERICA'S LUXURY HOME BUILDER®



TOLL BROTHERS AT THE NATIONS | LOFTS COLLECTION

# Cline Greensboro

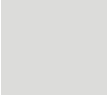

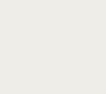

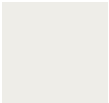
HOME SITE #207 | 826 42<sup>ND</sup> AVE NORTH | NASHVILLE, TN 37209



# Designer Appointed Features | EXTERIOR SELECTIONS

Designer Appointed Features are home details and finishes curated by the talented design professionals responsible for the distinctive looks found in our model homes.



|   |   |                                 |   |   |  |   |  |                               |   |   |                               |
|---|---|---------------------------------|---|---|--|---|--|-------------------------------|---|---|-------------------------------|
| 1 |  | <b>SIDING 1</b><br>Arctic White | 3 |  | <b>FRONT DOOR</b><br>Grizzle Gray<br>SW 7068 | 5 |  | <b>WINDOWS</b><br>White       | 7 |  | <b>SIDING 3</b><br>Gray Slate |
| 2 |  | <b>TRIM</b><br>Arctic White     | 4 |  | <b>GARAGE DOOR</b><br>White                  | 6 |  | <b>SIDING 2</b><br>Pearl Gray | 8 |  | <b>BRICK</b><br>Alpine Select |

TOLL BROTHERS AT THE NATIONS | LOFTS COLLECTION | CLINE GREENSBORO  
HOME SITE #207 | 826 42<sup>ND</sup> AVE NORTH | NASHVILLE, TN 37209

Photographs, renderings, and floor plans are for representational purposes only and may not reflect the exact features or dimensions of your home; actual product may differ. All dimensions are subject to field variations. Prices and offers subject to change without notice. This is not an offering where prohibited by law. Not all images may be shown. See online or onsite Sales Consultants for details.



# Designer Appointed Features | ARCHITECTURAL SELECTIONS

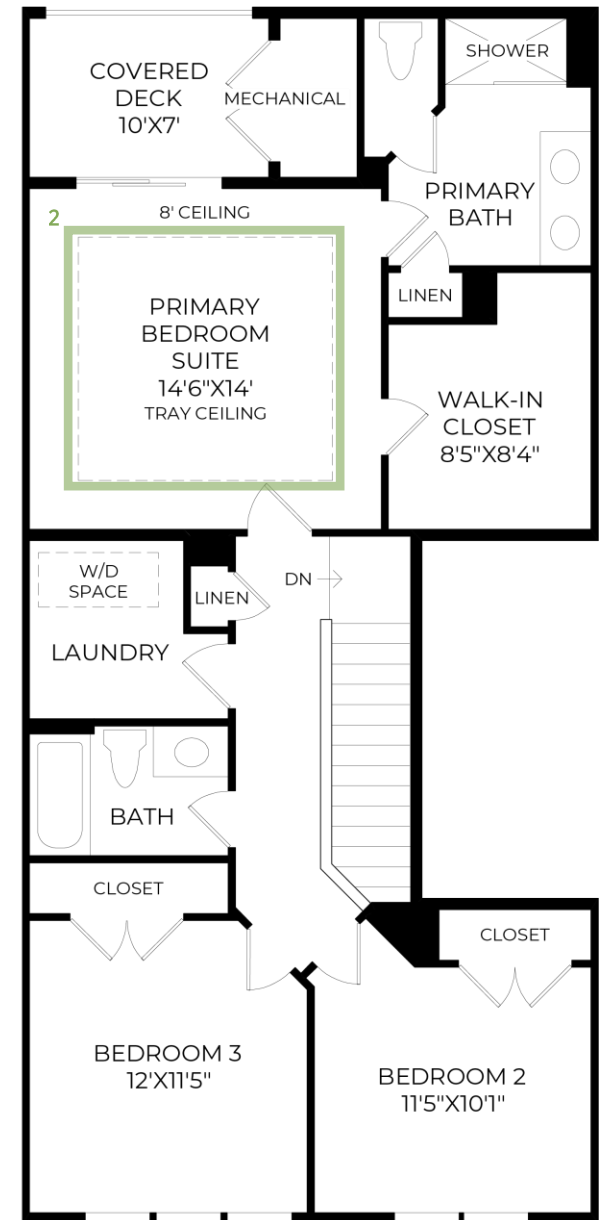
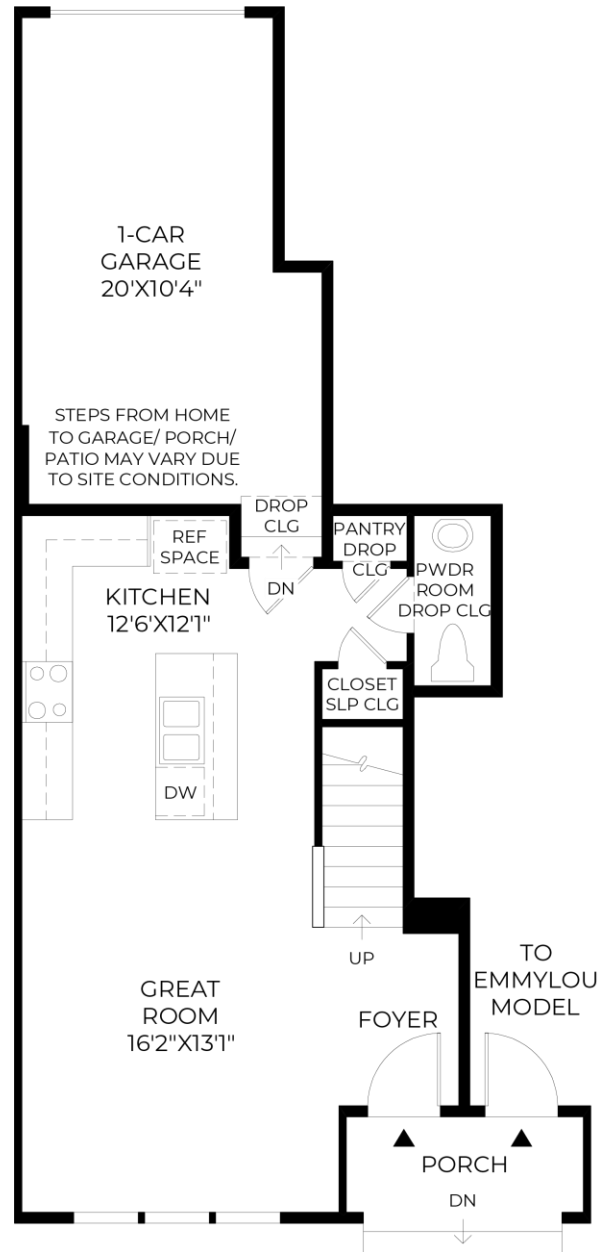
Designer Appointed Features are home details and finishes curated by the talented design professionals responsible for the distinctive looks found in our model homes.

## 1 OPEN RAILING

FLPJ0017 (not shown)

## 2 SOFFIT CEILING

CPFC0002



# Designer Appointed Features | INTERIOR SELECTIONS

Designer Appointed Features are home details and finishes curated by the talented design professionals responsible for the distinctive looks found in our model homes.

## 1 WALL PAINT

**Sherwin Williams |**  
City Loft | Pure White Trim

## 2 INTERIOR DOORS

**Masonite | Logan**  
White | 6' - 8" Hollow Core

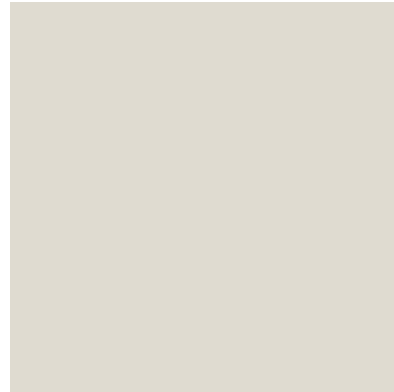
## 3 INTERIOR DOOR HANDLES

**Kwikset | Halifax Square Lever**  
Matte Black

## 4 FLOORING-LUXURY VINYL PLANK

**Shaw | Pride Plus**  
Galleria Pine | 7" Plank  
(Oak Stair Match - Coastal Oak)

1



2



3



4



# Designer Appointed Features | KITCHEN

Designer Appointed Features are home details and finishes curated by the talented design professionals responsible for the distinctive looks found in our model homes.

## 1 CABINETS

### Aristokraft Cabinetry | Dayton Birch

1. White Perimeter 2. Burlap Island

## 3 HARDWARE

### Aristokraft Cabinetry | Bar Pull

Black - HP-MB-605

## 4 COUNTERTOP

### Natural Stone | Quartzite

Taj Mahal | Standard Eased Edge

## 5 BACKSPLASH- TILE

### Dal Tile | Perfit Mosaix

Namaste & Thassos Capsule | 12"x18" mesh | #381 Bright White

## 6 FLOORING-LUXURY VINYL PLANK

### Shaw | Pride Plus

Galleria Pine | 7" Plank

## 7 FAUCET

### Kohler | Crue

Moderne Brushed Brass | Pull-Down K-22972-2MB

## 8 SINK

### Kohler | Vault

Stainless Steel | 32" x 18- 5/16" x 9- 5/16" | K-3821-NA

## 9 LIGHTING-ISLAND

### Progress Lighting | Terrazzo Mini Pendant

Brass | Over Island | P-500313-175

## 10 LIGHTING-DINING ROOM

### Haas Chandelier

Brushed Bronze | P400308-109

1



2



3



4



5



6



7



8



9



# Designer Appointed Features | KITCHEN APPLIANCES

Designer Appointed Features are home details and finishes curated by the talented design professionals responsible for the distinctive looks found in our model homes.

## 1 RANGE

### KitchenAide 30" 6.4 Cu.Ft. Electric Range

KSEG700ESS | Stainless Steel  
5 Cooking Elements including a Warm Zone  
Even-Heat True Convection  
Steam Rack

## 2 MICROWAVE

### KitchenAid 1.1 Cu.Ft. Flush Microwave

KMMF530PPS | Stainless Steel  
Air Fry Mode  
Multifunction Oven Modes  
Flush Built-In Design  
Turntable Free Design  
Smart Appliance

## 3 DISHWASHER

### KitchenAid 24" Dishwasher

KDTE204KPS | Stainless Steel  
Print Shield Finish  
Third Level Utensil Rack  
ProWash Cycle  
Adjustable Middle Rack

## 4 FRENCH DOOR KITCHENAID

### 36" 23.8 Cu.Ft.

KRFC704FPS | Stainless Steel  
Exterior Ice & Water  
Counter Depth  
Platinum Interior  
Print Shield Finish

1



2



3



4





# Designer Appointed Features | POWDER ROOM

Designer Appointed Features are home details and finishes curated by the talented design professionals responsible for the distinctive looks found in our model homes.

## 1 PEDESTAL SINK

**Sterling | Sacramento**

White | 34" x 18 1/4" x 4" | #442128-0

## 2 FAUCET

**Kohler | Hint**

Moderne Brushed Brass | 8" Widespread | K-97093-4-2MB

## 3 TOILET

**Sterling | Windham**

White | Comfort Height | #402322-0

## 4 FLOORING-LUXURY VINYL PLANK

**Shaw | Pride Plus**

Galleria Pine | 7" Plank

## 5 VANITY LIGHT

**Progress Lighting | Elevate 2-Light**

Brass | P300021-109

1



2



3



4



5



# Designer Appointed Features | PRIMARY BATHROOM

Designer Appointed Features are home details and finishes curated by the talented design professionals responsible for the distinctive looks found in our model homes.

## 1 VANITY CABINETS

**Aristokraft Cabinetry | Dayton Birch**  
Burlap

## 2 HARDWARE

**Aristokraft Cabinetry | Bar Pull**  
Matte Black - HP-BM-605

## 3 COUNTERTOP

**Silestone | Quartz**  
Ethereal Glow | Standard Eased Edge

## 4 FAUCET

**Kohler | Hint**  
Moderne Brushed Brass | 8" Widespread | K-97093-4-2MB

## 5 SINK

**Kohler | Caxton Undermount**  
White | 7- 5/16" x 15- 15/16" x 20- 9/16" | K-20000-0

## 6 SHOWER TILE—SIDE WALLS

**DalTile | Rigid Clay**  
Salt | 12" x 24" | #545 Bleached Wood

## 7 SHOWER TILE—BACK ACCENT WALL

**Emser | Pagoni Gloss**  
Mint | 4"x13" | #545 Bleached Wood

## 8 SHOWER FLOOR TILE

**DalTile | Rigid Clay**  
Salt | 1"x3" Offset Mosaic | #545 Bleached Wood

## 9 FLOORING - TILE

**DalTile | Calgary**  
Fawn | 12x24 | #643 Warm Gray

## 10 SHOWER FIXTURE

**Kohler | Hint/Pitch**  
Modern Brushed Brass | K-TS97077-4G-2MB

## 11 TOILET

**Sterling | Windham**  
White | Comfort Height | #402322-0

## 12 VANITY LIGHT

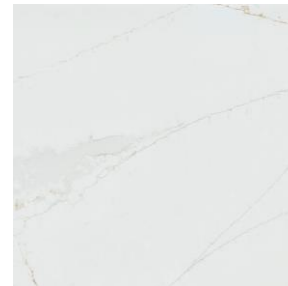
**Progress Lighting | Elevate 3-Light**  
Brass | P300022-109



1



2



3



4



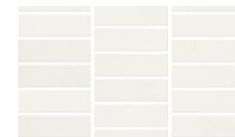
5



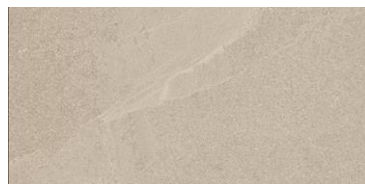
6



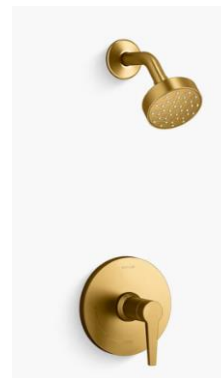
7



8



9



10



11



12



# Designer Appointed Features | SECONDARY BATHROOMS

Designer Appointed Features are home details and finishes curated by the talented design professionals responsible for the distinctive looks found in our model homes.

## 1 VANITY CABINETS

**Aristokraft Cabinetry | Dayton Birch**  
Burlap

## 2 HARDWARE

**Aristokraft Cabinetry | Bar Pull**  
Matte Black- HP-MB-605

## 3 COUNTERTOP

**Silestone | Quartz**  
Ethereal Glow | Standard Eased Edge

## 4 FAUCET

**Kohler | Hint**  
Moderne Brushed Brass | 8" Widespread | K-97093-4-2MB

## 5 SINK

**Kohler | Caxton Undermount**  
White | 7- 5/16" x 15- 15/16" x 20- 9/16" | K-20000-0

## 6 SHOWER TILE—WALLS

**DalTile | Mesmerist**  
Allure | 4"x4" Hex | #545 Bleached Wood

## 7 FLOORING- TILE

**DalTile | Calgary**  
Fawn | 12" x 24" | #643 Warm Gray

## 8 SHOWER/TUB FIXTURE

**Kohler | Hint/Pitch**  
Moderne Brushed Brass | K-TS97074-4G-2MB

## 9 TOILET

**Sterling | Windham**  
White | Comfort Height | #402322-0

## 10 TUB

**Sterling | Performa**  
White | 71041110-96

## 11 VANITY LIGHT

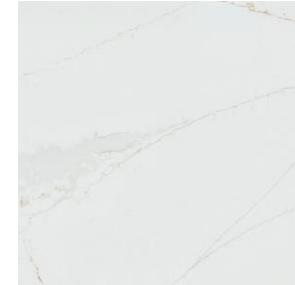
**Progress Lighting | Elevate 2-Light**  
Brass | P300021-109



1



2



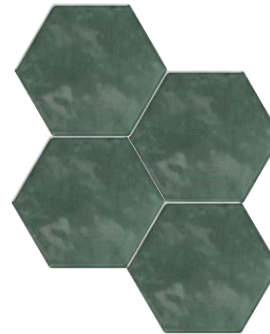
3



4



5



6



7



8



9



10



11

# Designer Appointed Features | LAUNDRY ROOM

Designer Appointed Features are home details and finishes curated by the talented design professionals responsible for the distinctive looks found in our model homes.

## 1 CABINETS

**Aristokraft Cabinetry | Dayton Birch**

White

## 2 HARDWARE

**Aristokraft Cabinetry | Bar Pull**

Matte Black- HP-MB-605

## 3 FLOORING- TILE

**DalTile | Calgary**

Fawn | 12" x 24" | #643 Warm Gray

## 4 WASHER

**Top Load Washer**

WTW6150PW

5.3 cu. ft.

Deep Water Wash Option

Smooth Spiral Stainless Steel Wash Basket

Energy Star Certified

## 5 DRYER

**Front Load Dryer**

WED6150PW

7 cu. ft.

Moisture Sensing

Wrinkle Shield Option

Steam Refresh Cycle

1



2



3



4



5

