

*Toll Brothers*  
AMERICA'S LUXURY HOME BUILDER®



TOLL BROTHERS AT THE NATIONS | LOFTS COLLECTION

# Cline Aberdeen

HOME SITE #311 | 248 EVERLY ALY | NASHVILLE, TN 37209

# Designer Appointed Features | EXTERIOR SELECTIONS

Designer Appointed Features are home details and finishes curated by the talented design professionals responsible for the distinctive looks found in our model homes.



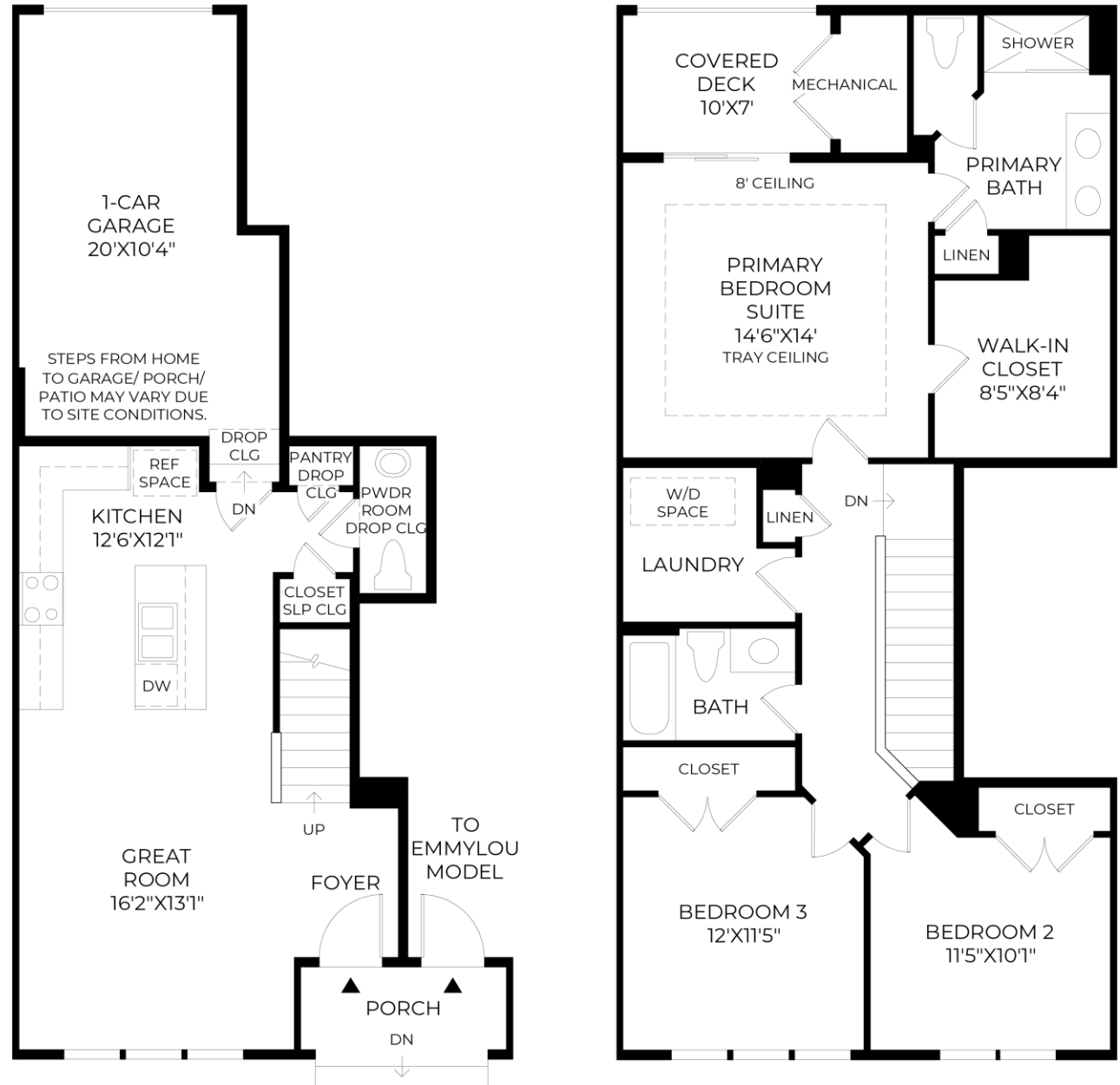
1		<b>SIDING 1</b> Arctic White	3		<b>FRONT DOOR</b> Tricorn Black SW 6258	5		<b>BRICK</b> Seaside Select – Georgia General Shale	7		<b>ROOF</b> Weathered Wood	9		<b>METAL ROOF</b> Matte Black
2		<b>TRIM</b> Arctic White	4		<b>GARAGE DOOR</b> White	6		<b>SIDING 2</b> Gray Slate James Hardie	8		<b>SIDING 3</b> Iron Gray James Hardie	10		<b>WINDOWS</b> White

# Designer Appointed Features | ARCHITECTURAL SELECTIONS

Designer Appointed Features are home details and finishes curated by the talented design professionals responsible for the distinctive looks found in our model homes.

## 1 OPEN RAILING

(not shown)



# Designer Appointed Features | INTERIOR SELECTIONS

Designer Appointed Features are home details and finishes curated by the talented design professionals responsible for the distinctive looks found in our model homes.

## 1 WALL PAINT

**Sherwin Williams**  
City Loft | Pure White Trim

## 2 INTERIOR DOORS

**Masonite | Logan**  
White | 6' - 8" Hollow Core

## 3 INTERIOR DOOR HANDLES

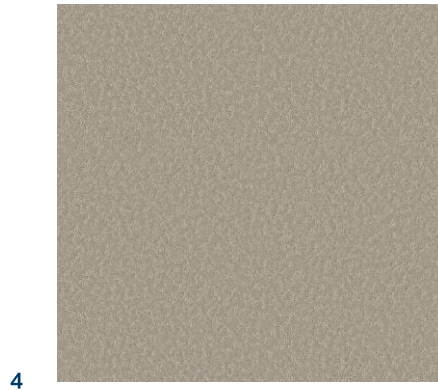
**Kwikset | Halifax Square Lever**  
Satin Nickel

## 4 FLOORING-CARPET

**Shaw | Expert Choice**  
Sandstone

## 5 FLOORING-LUXURY VINYL PLANK

**Shaw | Home**  
Genuine greigel 9" Plank  
(Oak Stair Match - Silver Shadow)



# Designer Appointed Features | KITCHEN

Designer Appointed Features are home details and finishes curated by the talented design professionals responsible for the distinctive looks found in our model homes.

## CABINETS - LEVEL 3

### Aristokraft Cabinetry | Brellin Purestyle

1. Admiral Perimeter 2. White Island

## 3 HARDWARE

### Aristokraft Cabinetry | Bar Pull

Brushed Satin Nickel 8-1/8" Pulls - HPBSN605

## 4 COUNTERTOP

### Silestone | Quartz

Parisien Bleu | Standard Eased Edge

## 5 BACKSPLASH - TILE

### DalTile | Revalia Remix

Ripple Cream | 2"x8" Horizontal Stacked | #642 Ash

## 6 FLOORING-LUXURY VINYL PLANK

### Shaw | Home

Genuine Greige | 9" Plank

## 7 FAUCET

### Kohler | Crue Pull-Out

Vibrant Stainless | K-22972-VS

## 8 SINK

### Kohler | Vault

Stainless Steel | 32" x 18- 5/16" x 9- 5/16" | K-3821-NA

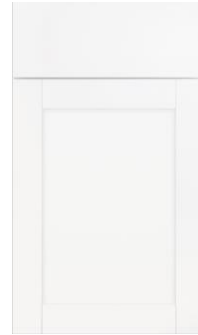
## 9 LIGHTING-ISLAND

### Progress Lighting | Atwell Medium Pendant

Brushed Nickel | Over Island | P500310-009



1



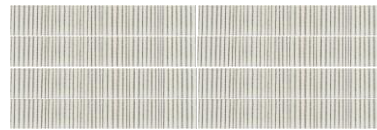
2



3



4



5



6



7



8



9

# Designer Appointed Features | KITCHEN APPLIANCES

Designer Appointed Features are home details and finishes curated by the talented design professionals responsible for the distinctive looks found in our model homes.

## 1 MICROWAVE

### 1.9 Cu. Ft. Steam Microwave

WMH32519HZ | Stainless Steel  
Sensor Cooking  
CleanRelease Non-Stick Interior  
3 speed, 300 CFM Motor Class  
Fingerprint Resistant  
Steam Cooking

## 2 RANGE

### 30" 5.3 Cu. Ft. Electric Range

WFES3530RS | Stainless Steel  
4-Burners  
Flex Heat Dual resistant Element  
Frozen Back Technology  
Keep Warm Setting  
Large Oven Window  
Closed Door Broiling

## 3 DISHWASHER

### 24" Dishwasher

WDT531HAPM | Stainless Steel  
Boost Cycle  
55 DBA Silence Rating  
Heated Dry/Extended Soak  
Triple Filtration Wash System  
ENERGY STAR Certified

## 4 FRENCH DOOR FRIDGE

### 36" Whirlpool French Door

WRF555SDFZ | Stainless Steel  
25 cu. ft  
Exterior Ice and Water  
Spillproof shelves  
Two Tier Freezer Storage  
Fingerprint Resistant  
Humidity Controlled Double Crisper



# Designer Appointed Features | POWDER ROOM

Designer Appointed Features are home details and finishes curated by the talented design professionals responsible for the distinctive looks found in our model homes.

## 1 PEDESTAL SINK

**Sterling | Sacramento**

White | 34" x 18 1/4" x 4" | #442128-0

## 2 FAUCET

**Kohler | Venza**

Vibrant Brushed Nickel | 8" Widespread | K-28125-4-BN

## 3 TOILET

**Sterling | Windham**

White | Comfort Height | #402322-0

## 4 FLOORING-LUXURY VINYL PLANK

**Shaw | Home**

Genuine Greige | 9" Plank



1



2



3



4

# Designer Appointed Features | PRIMARY BATHROOM

Designer Appointed Features are home details and finishes curated by the talented design professionals responsible for the distinctive looks found in our model homes.

## 1 VANITY CABINETS - LEVEL 3

**Aristokraft Cabinetry | Brellin Purestyle**  
White

## 2 HARDWARE

**Aristokraft Cabinetry | Bar Pull**  
Brushed Satin Nickel 8-1/8" Pulls - HPBSN605

## 3 COUNTERTOP

**Silestone | Quartz**  
Miami Vena | Standard Eased Edge

## 4 FAUCET

**Kohler | Venza**  
Vibrant Brushed Nickel | 8" Widespread | K-28125-4-BN

## 5 SINK

**Kohler | Caxton Undermount**  
White | 7- 5/16" x 15- 15/16" x 20- 9/16" | K-20000-0

## 6 SHOWER TILE—SIDE WALLS

**DalTile | Multitude Wave**  
Oragami White | 12" x 24" | #381 Bright White

## 7 SHOWER TILE—BACK ACCENT WALL

**DalTile | Perfit Mosaix**  
Ashen Pallissandro & Carrara WH Hinge 12"x18" mesh | #381 Bright White

## 8 FLOORING - TILE

**Marazzi | Modern Oasis**  
Stormy Sky | 12X24 | #335 Winter Gray

## 9 SHOWER FIXTURES

**Kohler | Venza**  
Vibrant Brushed Nickel | K-TS28128-4G-BN

## 10 TOILET

**Sterling | Windham**  
White | Comfort Height | #402322-0



1



2



3



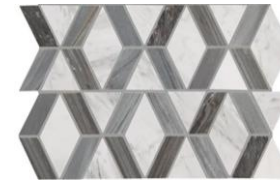
4



5



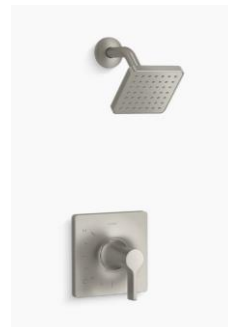
6



7



8



9



10

# Designer Appointed Features | SECONDARY BATHROOM

Designer Appointed Features are home details and finishes curated by the talented design professionals responsible for the distinctive looks found in our model homes.

## 1 VANITY CABINETS - LEVEL 3

**Aristokraft Cabinetry | Brellin Purestyle**  
White

## 2 HARDWARE

**Aristokraft Cabinetry | Bar Pull**  
Brushed Satin Nickel 8-1/8" Pulls - HPBSN605

## 3 COUNTERTOP

**Silestone | Quartz**  
Miami Vena | Standard Eased Edge

## 4 FAUCET

**Kohler | Venza**  
Vibrant Brushed Nickel | 8" Widespread | K-28125-4-BN

## 5 SINK

**Kohler | Caxton Undermount**  
White | 7- 5/16" x 15- 15/16" x 20- 9/16" | K-20000-0

## 6 SHOWER TILE-WALLS

**Dal Tile | Mesmerist**  
Whimsy | 3" x 12" Horizontal Stack | #545 Bleached Wood

## 7 FLOORING- TILE

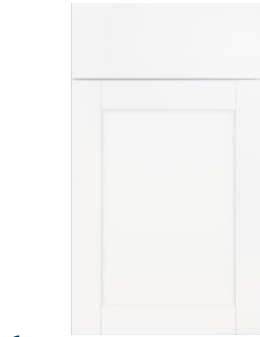
**DalTile | Bryne**  
Mist | 12" x 24" | #543 Driftwood

## 8 SHOWER FIXTURE

**Kohler | Venza**  
Vibrant Brushed Nickel | K-TS28127-4G-BN

## 9 TOILET

**Sterling | Windham**  
White | Comfort Height | #402322-0



1



2



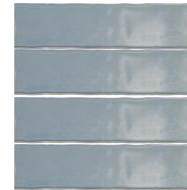
3



4



5



6



7



8



9

# Designer Appointed Features | LAUNDRY ROOM

Designer Appointed Features are home details and finishes curated by the talented design professionals responsible for the distinctive looks found in our model homes.

## 1 FLOORING- TILE

### DalTile | Bryne

Mist | 12" x 24" | #543 Driftwood

## 2 WASHER

### Top Load Washer

WTW6150PW

5,3 Cu. Ft.

Deep Water Wash Option

Smooth Spiral Stainless Steel Wash Basket

Energy Star Certified

## 3 DRYER

### Front Load Dryer

WED6150PW

7 Cu. Ft.

Moisture Sensing

Wrinkle Shield Option

Steam Refresh Cycle



1



2



3