

Toll Brothers
AMERICA'S LUXURY HOME BUILDER®



WATERVIEW LANDING AT BABCOCK RANCH | ANCHOR COLLECTION

Estero Farmhouse

HOME SITE 90 | 16349 PRESERVATION BLVD | PUNTA GORDA, FL 33982

Designer Appointed Features | EXTERIOR SELECTIONS

Designer Appointed Features are home details and finishes curated by the talented design professionals responsible for the distinctive looks found in our model homes.



1		PRIMARY Sleepy Blue SW6225	3		FRONT DOOR Cyberspace SW7076	5		ROOF Charcoal
2		TRIM Pure White SW7005	4		GARAGE DOOR Pure White SW7005	6		PAVERS Granite

WATERVIEW LANDING AT BABCOCK RANCH | ANCHOR COLLECTION | ESTERO FARMHOUSE
HOME SITE 90 | 16349 PRESERVATION BLVD | PUNTA GORDA, FL 33982

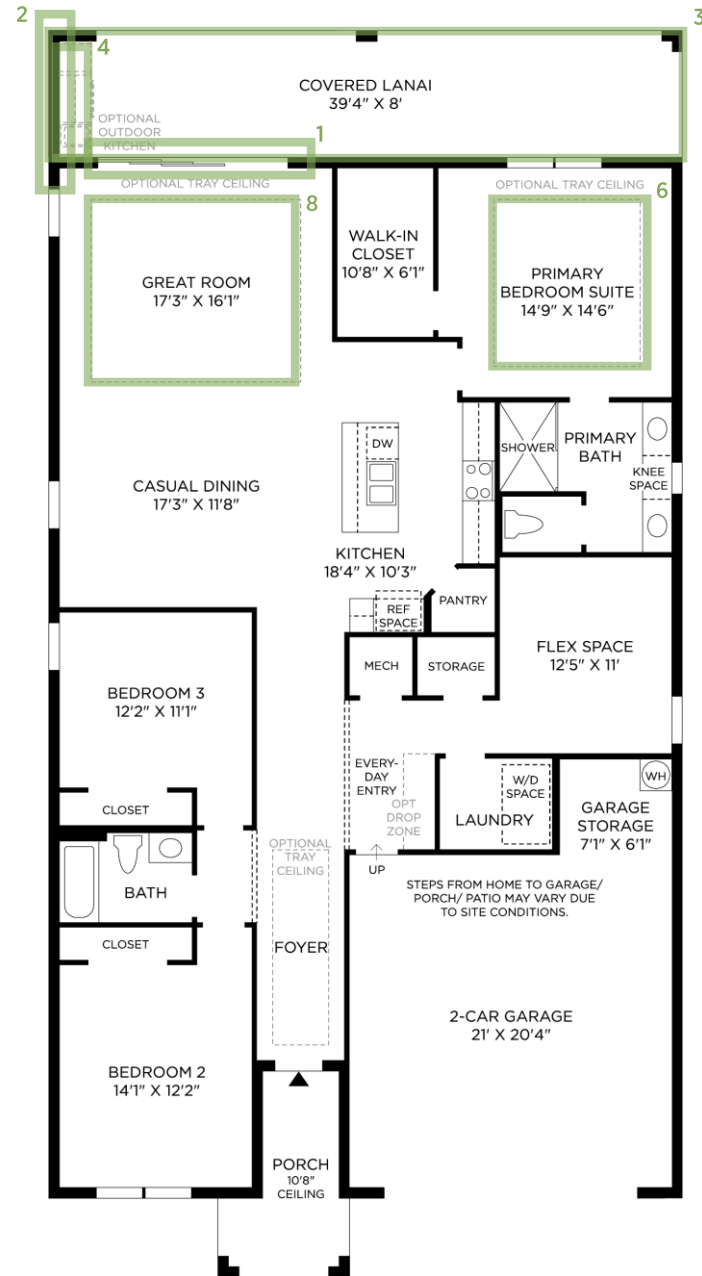
Photographs, renderings, and floor plans are for representational purposes only and may not reflect the exact features or dimensions of your home. All dimensions are subject to field variations. Prices and offers subject to change without notice. This is not an offering where prohibited by law. Images are for representational purposes only and actual product may differ. Not all images may be shown. See online or onsite sales consultants for details.



Designer Appointed Features | STRUCTURAL OPTIONS

Designer Appointed Features are home details and finishes curated by the talented design professionals responsible for the distinctive looks found in our model homes.

- 1 **MULTI-SLIDE STACKED DOOR 12X8**
PC026365
- 2 **EXTERIOR FULL-HEIGHT PRIVACY WALL**
PC263376
- 3 **ALTERNATE COVERED LANAI**
PC263340
- 4 **OUTDOOR KITCHEN PREP PACKAGE**
PC263069
- 5 **SEC BATH – SHOWER STALL**
PC04844 (not shown)
- 6 **TRAY CEILING**
PC036487
- 7 **PAINTED DRYWALL BOX BEAMS**
PC036518 (not shown)
- 8 **TRAY CEILING**
PC036491
- 9 **PAINTED DRYWALL BOX BEAMS**
PC036516 (not shown)



Designer Appointed Features | EXTERIOR SELECTIONS

Designer Appointed Features are home details and finishes curated by the talented design professionals responsible for the distinctive looks found in our model homes.

1 FRONT DOOR HARDWARE - EXTERIOR

Kwikset

Satin Nickel | Dakota w/Traditional Keypad

2 FRONT DOOR HARDWARE - INTERIOR

Kwikset

Satin Nickel | Connected Smart Lock w/Z-Wave Technology and Tustin Lever

3 GARAGE COACH LIGHTING

Progress Lighting

Black | 1-Light Farmhouse

1



2



3



Designer Appointed Features | INTERIOR SELECTIONS

Designer Appointed Features are home details and finishes curated by the talented design professionals responsible for the distinctive looks found in our model homes.

1 WALL PAINT

Sherwin Williams

SW 7005 Pure White | Walls & Ceilings

2 INTERIOR DOORS

2 Panel Hollow Core

3 INTERIOR DOOR HANDLES

Kwikset

Satin Nickel | Tustin Lever

4 FLOORING-TILE

Shaw

200 Cream | Sphinx 12x24

5 FOYER LIGHTING

Progress Lighting

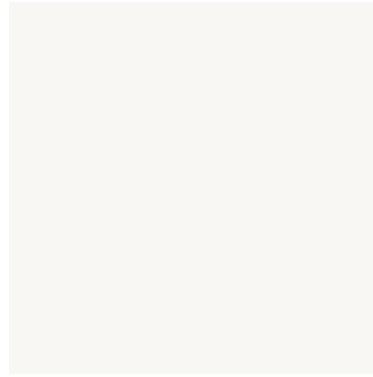
Brushed Nickel | Gather Semi-Flush

6 CASUAL DINING LIGHTING

Progress Lighting

Brushed Nickel | Gather Semi-Flush

1



2



3



4



5



6



Designer Appointed Features | KITCHEN

Designer Appointed Features are home details and finishes curated by the talented design professionals responsible for the distinctive looks found in our model homes.

1 CABINETS-PERIMETER

Pivot

White | Brawny Maple

2 CABINETS-ISLAND

Pivot

Buckskin | Brawny Maple

3 HARDWARE

Top Knobs

Polished Chrome | Hopewell Pulls M1848

4 COUNTERTOP

Viatera

Lumina | 3cm Polished

5 BACKSPLASH

Daltile

RV06 Cream Glossy | Revalia Remix Ripple 2x8

6 FLOORING-TILE

Shaw

200 Cream | Sphinx 12x24

7 FAUCET

Kohler

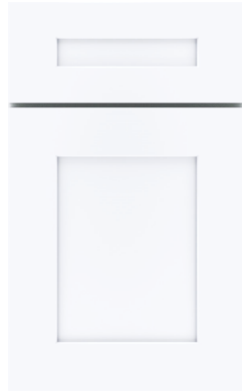
Polished Chrome | Crue Pull-Down Spray

8 SINK

Kohler

Stainless Steel | Vault Single Bowl Undermount

1



2



3



4



5



6



7



8



Designer Appointed Features | KITCHEN APPLIANCES

Designer Appointed Features are home details and finishes curated by the talented design professionals responsible for the distinctive looks found in our model homes.

1 REFRIGERATOR

KitchenAid

Stainless Steel | 36" French Door Counter Depth

2 RANGE

KitchenAid

Stainless Steel | 36" Gas

3 MICROWAVE

KitchenAid

Stainless Steel | Over-The-Range

5 DISHWASHER

KitchenAid

Stainless Steel | 24"

1



2



3



4



5

Designer Appointed Features | LAUNDRY APPLIANCES

Designer Appointed Features are home details and finishes curated by the talented design professionals responsible for the distinctive looks found in our model homes.

1 WASHER

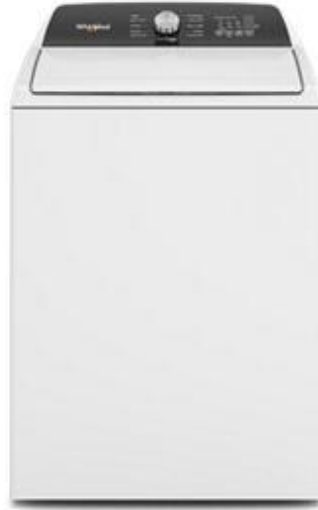
Whirlpool

White | WTW5010LW

2 DRYER

Whirlpool

White | WGD5010LW



1



2

Designer Appointed Features | PRIMARY BATHROOM

Designer Appointed Features are home details and finishes curated by the talented design professionals responsible for the distinctive looks found in our model homes.

1 VANITY CABINETS

Pivot

White | Brawny Maple

2 HARDWARE

Top Knobs

Polished Chrome | Hopewell Pulls M1848

3 COUNTERTOP

Viatera

Lumina | 3cm Polished

4 FAUCET

Kohler

Polished Chrome | Venza Widespread

5 SINK

Kohler

White | Archer Rectangular Undermount

6 SHOWER TILE—WALLS

Shaw

200 Cream | Sphinx 12x24

7 SHOWER TILE—FLOOR

Shaw

200 Cream | Sphinx 2x2 Mosaic

8 FLOORING—TILE

Shaw

200 Cream | Sphinx 12x24

9 SHOWER FIXTURES

Kohler

Polished Chrome | Venza

10 TOILET

Kohler

White | Highline Comfort Height

1



2



3



4



5



6



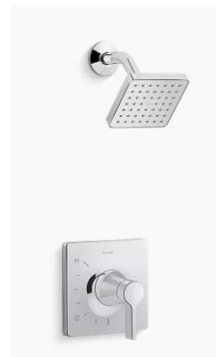
7



8



9



10



Designer Appointed Features | BATHROOM #2

Designer Appointed Features are home details and finishes curated by the talented design professionals responsible for the distinctive looks found in our model homes.

1 VANITY CABINETS

Pivot

White | Brawny Maple

2 HARDWARE

Top Knobs

Polished Chrome | Hopewell Pulls M1848

3 COUNTERTOP

Viatera

Lumina | 3cm Polished

4 FAUCET

Kohler

Polished Chrome | Venza Widespread

5 SINK

Kohler

White | Archer Rectangular Undermount

6 SHOWER TILE—WALLS

Shaw

200 Cream | Sphinx 12x24

7 SHOWER TILE—FLOOR

Shaw

200 Cream | Sphinx 2x2 Mosaic

8 FLOORING—TILE

Shaw

200 Cream | Sphinx 12x24

9 SHOWER FIXTURES

Kohler

Polished Chrome | Venza

10 TOILET

Kohler

White | Highline Comfort Height

1



2



3



4



5



6



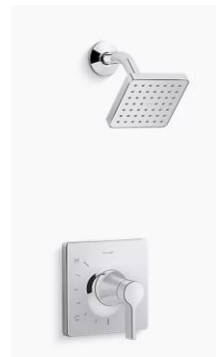
7



8



9



10

