

*Toll Brothers*  
AMERICA'S LUXURY HOME BUILDER®



SOUTHBROOKE

# Antioch Traditional

HOME SITE 8 | 6450 POND VIEW DRIVE | CUMMING, GA 30028

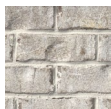


# Designer Appointed Features | EXTERIOR SELECTIONS

Designer Appointed Features are home details and finishes curated by the talented design professionals responsible for the distinctive looks found in our model homes.



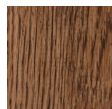
1



## BRICK

Magnolia Bay

3



## FRONT DOOR

Walnut  
Mini Wax

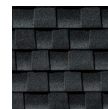
5



## SIDING

Drift Of Mist  
SW 9166

7



## ROOF

Charcoal

9



## COLUMNS

Downing Stone  
SW 2821

2



## TRIM

Downing Stone  
SW 2821

4



## GARAGE DOOR

Drift Of Mist  
SW 9166

6



## METAL ROOF

Dark Bronze

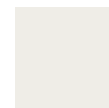
8



## SHUTTERS

Tricorn Black  
SW 6258

10



## WINDOWS

White

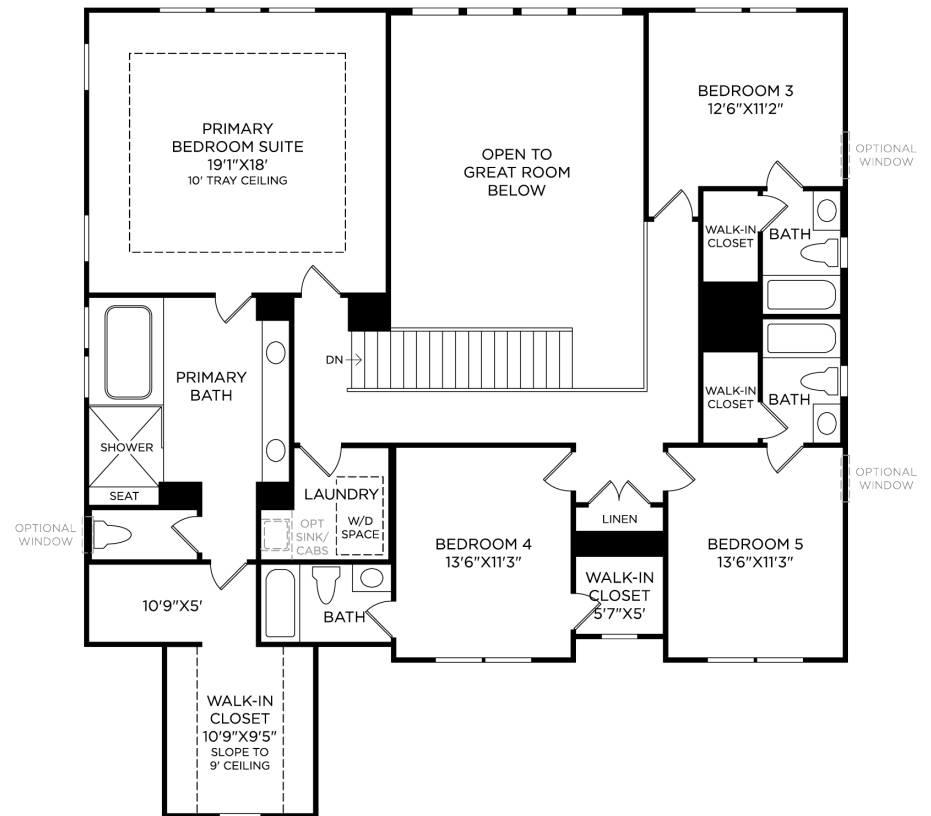
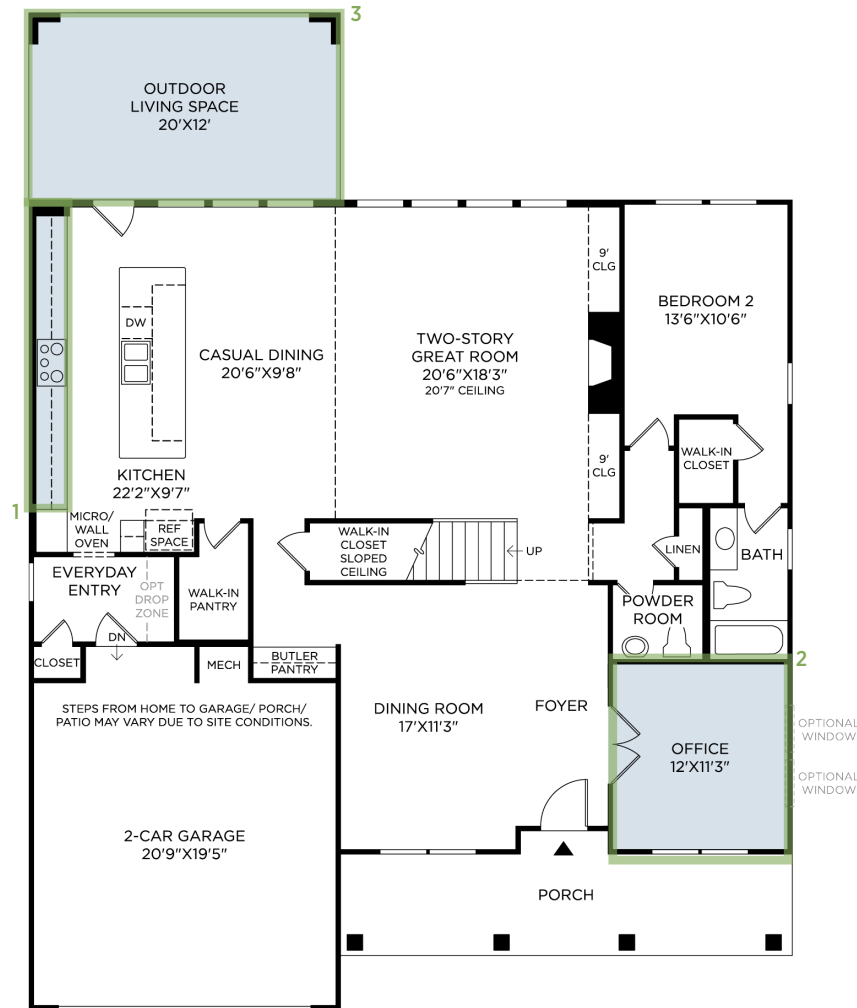
**SOUTHBROOKE | ANTIOCH TRADITIONAL**  
**HOME SITE 8 | 6450 POND VIEW DRIVE | CUMMING, GA 30028**

Photographs, renderings, and floor plans are for representational purposes only and may not reflect the exact features or dimensions of your home; actual product may differ. All dimensions are subject to field variations. Prices and offers subject to change without notice. This is not an offering where prohibited by law. Not all images may be shown. See online or onsite Sales Consultants for details.



# Designer Appointed Features | ARCHITECTURAL SELECTIONS

Designer Appointed Features are home details and finishes curated by the talented design professionals responsible for the distinctive looks found in our model homes.



## 1 STRUCTURAL OPTION

Option code  
Optional description

## 2 STRUCTURAL OPTION

Option code  
Optional description

## 3 STRUCTURAL OPTION

Option code  
Optional description

## 4 STRUCTURAL OPTION

Option code  
Optional description



# Designer Appointed Features | EXTERIOR SELECTIONS

Designer Appointed Features are home details and finishes curated by the talented design professionals responsible for the distinctive looks found in our model homes.

## 1 SIDING

**Sherwin Williams**  
DRIFT OF MIST / #SW-9166

## 2 TRIM

**Sherwin Williams**  
DOWNING STONE / #SW-2821

## 3 PAINTED COLUMNS

**Sherwin Williams**  
DOWNING STONE / #SW-2821

## 4 ROOF

**Architectural**  
CHARCOAL

## 5 METAL ROOF

**Metal Works**  
DARK BRONZE

## 6 BRICK

**General Shale**  
MAGNOLIA BAY

## 7 WINDOWS

**Vinyl**  
WHITE

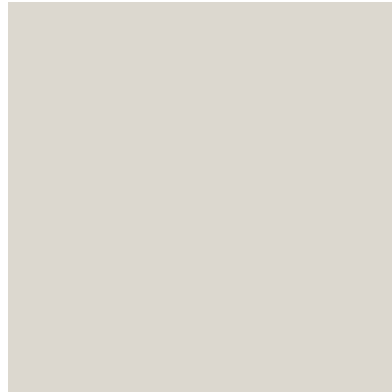
## 8 GARAGE

**Sherwin Williams**  
DRIFT OF MIST / #SW-9166

## 9 FRONT DOOR

**Minwax Gel Stain**  
WALNUT

1



2



3



4



5



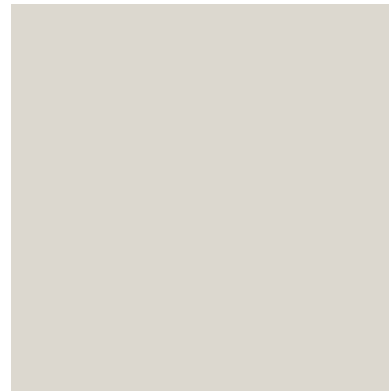
6



7



8



9



# Designer Appointed Features | INTERIOR SELECTIONS

Designer Appointed Features are home details and finishes curated by the talented design professionals responsible for the distinctive looks found in our model homes.

## 1 WALL PAINT

**Sherwin Williams**  
HERON PLUME / #SW-6070

## 2 INTERIOR DOORS

**Sherwin Williams**  
EXTRA WHITE / #SW-7006

## 3 INTERIOR DOOR HANDLES

**Kwikset**  
HANCOCK KNOB - BLACK

## 4 FLOORING-CARPET

**Shaw**  
STONE PATH / WEATHERED

## 5 FLOORING-HARDWOOD

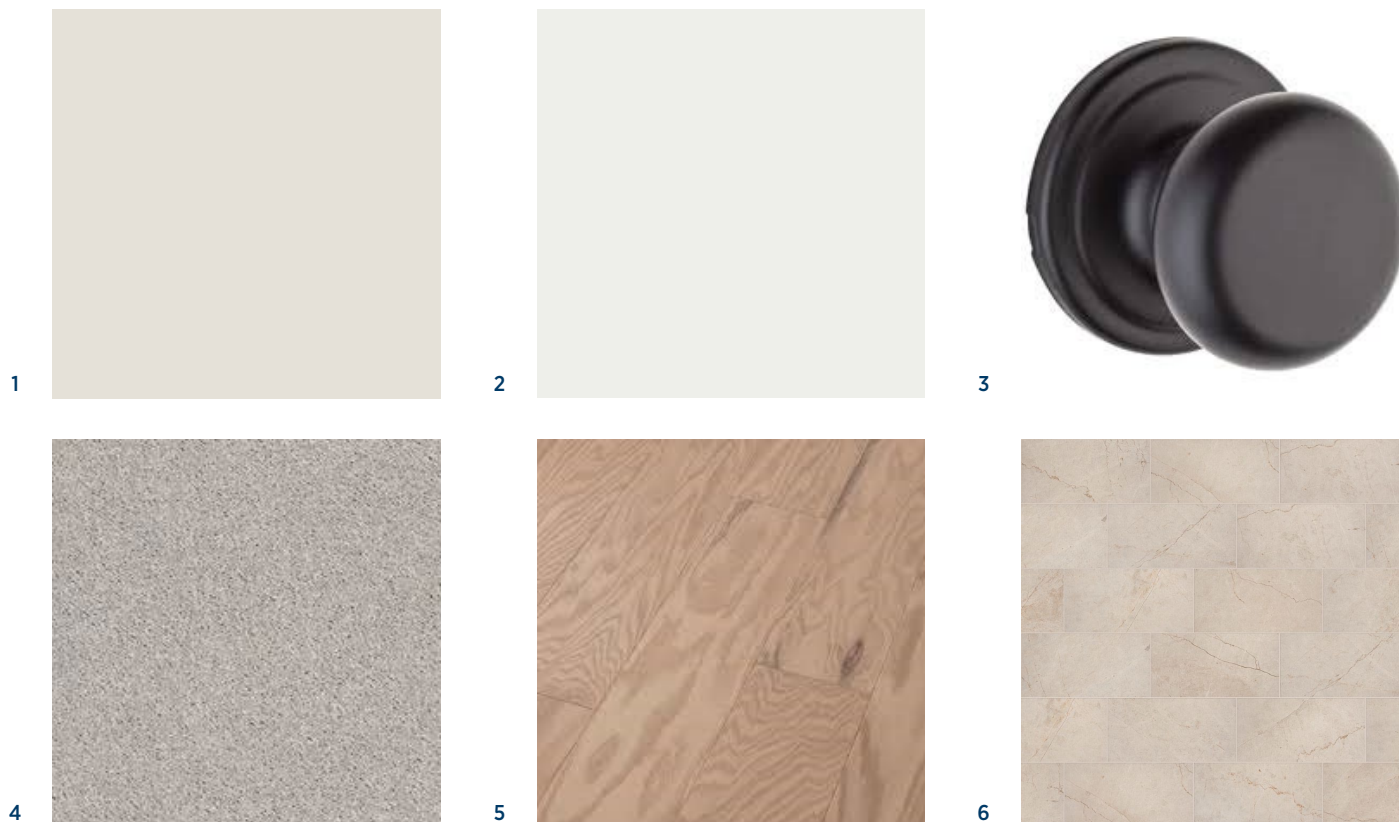
**Shaw**  
OPEN PORTAL II / BISCUIT

## 6 FIREPLACE

**Shaw**  
12 X 24 ODYSSEY / 125 AVAIL

## 7 LIGHTING

**Progress**  
MODERN BLACK



Modern Black/Satin Brass



Model numbers are subject to change without notice. This is not an offering where prohibited by law. Images are for representational purposes only and actual product may differ. Not all images may be shown. See online or onsite Sales Consultants for details.

**Toll Brothers**  
America's Luxury Home Builder™

# Designer Appointed Features | KITCHEN

Designer Appointed Features are home details and finishes curated by the talented design professionals responsible for the distinctive looks found in our model homes.

## 1 CABINETS

### Diamond Vibe

PERIMETER - WESTBURKE / WHITE  
ISLAND - WESTBURKE / THATCH

## 2 HARDWARE

### Jeffrey Alexander

625-128-MB

## 3 COUNTERTOP-ISLAND

### Quartzite

VANCOUVER

## 4 COUNTERTOP-PERIMETER

### Silestone

MIAMI WHITE

## 5 BACKSPLASH

### Emser

3 X 12 RAKU / WHITE

## 6 FLOORING-HARDWOOD

### Shaw

OPEN PORTAL II / BISCUIT

## 7 FAUCET

### Kohler

CRUE CONNECT TOUCHLESS - BLACK

## 8 SINK

### Kohler

K-3821 NA VAULT SINGLE BOWL UNDERMOUNT

## 9 LIGHTING-ISLAND

### Progress

MODERN BLACK

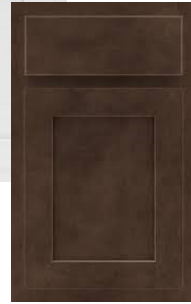
## 10 LIGHTING-CASUAL DINING

### Progress

MODERN BLACK



1



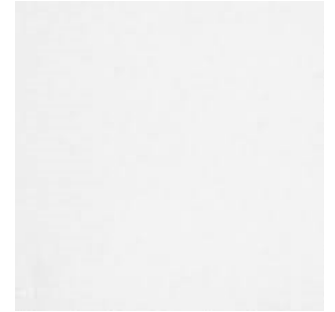
2



3



4



5



6



7



8



9



10

# Designer Appointed Features | KITCHEN APPLIANCES

Designer Appointed Features are home details and finishes curated by the talented design professionals responsible for the distinctive looks found in our model homes.

## 1 DISHWASHER

Whirlpool  
WDT75ISAPZ

## 2 RANGE

Whirlpool  
WCGK5036PS

## 3 VENT HOOD

Whirlpool  
UXT5536AAS

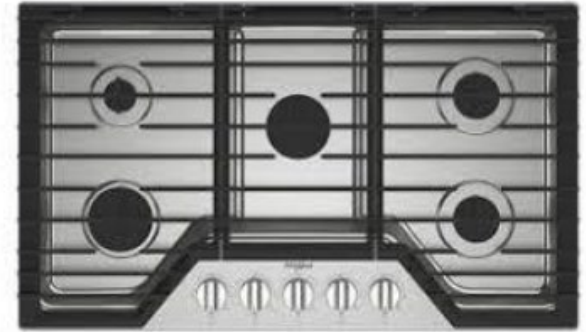
## 4 WALL OVEN/MICROWAVE

Whirlpool  
WOEC5030LZ

1



2



3



4



# Designer Appointed Features | POWDER ROOM

Designer Appointed Features are home details and finishes curated by the talented design professionals responsible for the distinctive looks found in our model homes.

## 1 PEDESTAL SINK

**Kohler**  
SACREMENTO PEDESTAL

## 2 FAUCET

**Kohler**  
SH HINT/PITCH BLACK

## 3 TOILET

**Sterling**  
WINDHAM

## 4 FLOORING

**Shaw**  
OPEN PORTAL II / BISCUIT

1



2



3



4





# Designer Appointed Features | PRIMARY BATHROOM

Designer Appointed Features are home details and finishes curated by the talented design professionals responsible for the distinctive looks found in our model homes.

## 1 VANITY CABINETS

**Diamond Vibe**  
WESTBURKE / WHITE

## 2 HARDWARE

**Jeffrey Alexander**  
625-128-MB

## 3 COUNTERTOP

**Hi Macs**  
NORDIC WHITE

## 4 FAUCET

**Kohler**  
SH HINT/PITCH BLACK

## 5 SINK

**Kohler**  
K-20000 CAXTON RECTANGLE UNDERMOUNT

## 6 SHOWER TILE—WALLS

**Shaw**  
3 X 12 RAKU WHITE

## 7 SHOWER TILE—FLOOR

**Emser**  
12 X 24 SILHOUETTE FIGURE

## 8 SHOWER TILE—PAN

**Emser**  
2 X 2 SILHOUETTE FIGURE

## 9 SHOWER FIXTURES

**Kohler**  
HINT/PITCH BLACK

## 10 TOILET

**Sterling**  
WINDHAM



# Designer Appointed Features | DOWN FULL BATHROOM

Designer Appointed Features are home details and finishes curated by the talented design professionals responsible for the distinctive looks found in our model homes.

## 1 VANITY CABINETS

**Diamond Vibe**  
WESTBURKE / WHITE

## 2 HARDWARE

**Jeffrey Alexander**  
625-128-MB

## 3 COUNTERTOP

**Hi Macs**  
NORDIC WHITE

## 4 FAUCET

**Kohler**  
SH HINT/PITCH BLACK

## 5 SINK

**Kohler**  
K-20000 CAXTON RECTANGLE UNDERMOUNT

## 6 SHOWER TILE—WALLS

**Emser**  
12 X 24 SILHOUETTE FIGURE

## 7 SHOWER TILE—FLOOR

**Emser**  
12 X 24 SILHOUETTE FIGURE

## 8 SHOWER TILE—PAN

**Emser**  
2 X 2 SILHOUETTE FIGURE

## 9 SHOWER FIXTURES

**Kohler**  
HINT/PITCH BLACK

## 10 TOILET

**Sterling**  
WINDHAM



# Designer Appointed Features | ALL UPSTAIRS SECONDARY BATHROOMS

Designer Appointed Features are home details and finishes curated by the talented design professionals responsible for the distinctive looks found in our model homes.

## 1 VANITY CABINETS

**Diamond Vibe**  
WESTBURKE / WHITE

## 2 HARDWARE

**Jeffrey Alexander**  
625-128-MB

## 3 COUNTERTOP

**Hi Macs**  
NORDIC WHITE

## 4 FAUCET

**Kohler**  
SH HINT/PITCH BLACK

## 5 SINK

**Kohler**  
K-20000 CAXTON RECTANGLE UNDERMOUNT

## 6 SHOWER TILE—WALLS

**Shaw**  
3 X 6 100 WHITE / BAKER BLVD

## 7 SHOWER TILE—FLOOR

**Shaw**  
200 RESURGENCE HEX

## 8 SHOWER FIXTURES

**Kohler**  
HINT/PITCH BLACK

## 9 TOILET

**Sterling**  
WINDHAM

