

*Toll Brothers*  
AMERICA'S LUXURY HOME BUILDER®



TOLL BROTHERS AT RIVERSEEDGE

# Elder Modern

HOME SITE #27 | 1928 PRUDENTIAL DR. | JACKSONVILLE, FL 32207



# Designer Appointed Features | EXTERIOR SELECTIONS

Designer Appointed Features are home details and finishes curated by the talented design professionals responsible for the distinctive looks found in our model homes.



- |   |  |  |   |  |  |   |  |   |   |  |                                  |
|---|--|--|---|--|--|---|--|---|---|--|----------------------------------|
| 1 |  | <b>LAP SIDING</b><br>Extra White<br>SW 7006        | 3 |  | <b>FRONT DOOR</b><br>Iron Ore<br>SW 7069 | 5 |  | <b>MASONRY</b><br>Arriscraft Midtown<br>Lombard | 7 |  | <b>METAL ROOF</b><br>Matte Black |
| 2 |  | <b>ACCENT PANEL</b><br>Knitting Needles<br>SW 7672 | 4 |  | <b>GARAGE DOOR</b><br>White              | 6 |  | <b>ACCENT SIDING</b><br>Pewter Cast<br>SW 7673  | 8 |  | <b>WINDOWS</b><br>Black          |

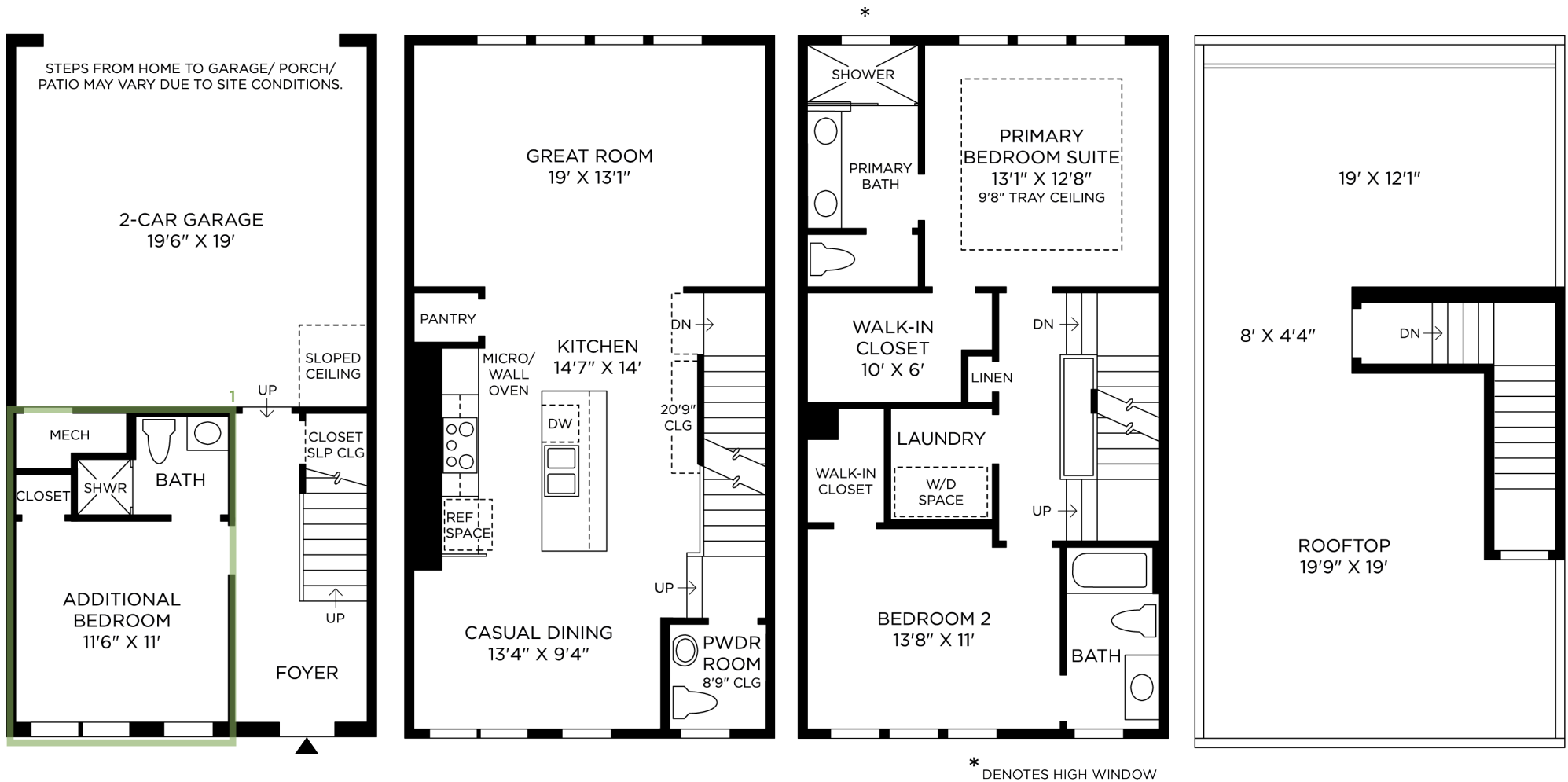
TOLL BROTHERS AT RIVERSEDGE | ELDER MODERN  
HOME SITE 27 | 1928 PRUDENTIAL DR. | JACKSONVILLE, FL 32207

Photographs, renderings, and floor plans are for representational purposes only and may not reflect the exact features or dimensions of your home; actual product may differ. All dimensions are subject to field variations. Prices and offers subject to change without notice. This is not an offering where prohibited by law. Not all images may be shown. See online or onsite Sales Consultants for details.



# Designer Appointed Features | ARCHITECTURAL SELECTIONS

Designer Appointed Features are home details and finishes curated by the talented design professionals responsible for the distinctive looks found in our model homes.



## 1 BEDROOM REPLACES FLEX ROOM

PC263299

# Designer Appointed Features | INTERIOR SELECTIONS

Designer Appointed Features are home details and finishes curated by the talented design professionals responsible for the distinctive looks found in our model homes.

## 1 INTERIOR CARPENTRY

### Coastal Trim

5 ¼" Flat Stock Baseboards & 4"/6" Flat Stock  
Door Casing | White

## 2 INTERIOR DOORS

### Two-Panel Logan

White | Shaker Style

## 3 INTERIOR DOOR HANDLES

### Kwikset San Clemente/Halifax

Matte Black

## 4 FLOORING – ENGINEERED WOOD

### Shaw Worthing II

Holland Park | Random Offset

## 5 INTERIOR PAINT

### Sherwin Williams Extra White

SW7006 | Flat

## 6 FOYER LIGHTING

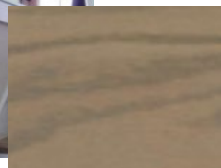
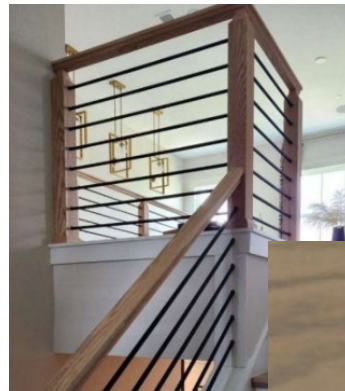
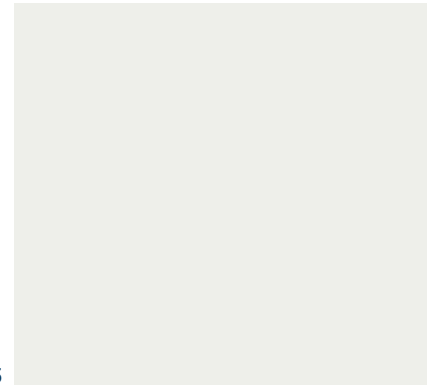
### Progress Kellwyn

Matte Black | 5 Light

## 7 STAIR RAILING & OAK TREADS

### Contemporary Newel Post & Horizontal Tubular Railing

Oak Treads with Painted White Risers  
Stain: Classic Gray





# Designer Appointed Features | KITCHEN

Designer Appointed Features are home details and finishes curated by the talented design professionals responsible for the distinctive looks found in our model homes.

## 1 CABINETS

Diamond Vibe Kenora  
Coastline | Slab Drawer

## 2 HARDWARE

Drawer & Door Pulls  
Matte Black

## 3 COUNTERTOP-ISLAND & PERIMETER

Silestone Quartz  
Perimeter | Lime Delight Suede  
Island | Bohemian Flame Suede

## 4 BACKSPLASH

Dal Mythology Picket  
Olympus | Vertical Picket

## 5 FLOORING-ENGINEERED WOOD

Shaw Worthing II  
Holland Park | Random Offset

## 6 FAUCET

Kohler Crue  
Matte Black | Pull Down

## 7 SINK

Kohler Vault  
Stainless Steel | Single Basin Undermount

## 8 LIGHTING-ISLAND

Progress Kellwyn  
Matte Black | Pendant



1



2



3



4



5



6



7



8

# Designer Appointed Features | KITCHEN APPLIANCES

Designer Appointed Features are home details and finishes curated by the talented design professionals responsible for the distinctive looks found in our model homes.

## 1 COOKTOP

JennAir  
Stainless Steel | 5-Burner Gas

## 2 VENT HOOD

JennAir  
Stainless Steel | Under Cabinet

## 3 MICROWAVE/OVEN COMBO

JennAir  
Stainless Steel | Built-In

## 4 DISHWASHER

JennAir  
Stainless Steel



# Designer Appointed Features | PRIMARY BATHROOM (SHOWER)

Designer Appointed Features are home details and finishes curated by the talented design professionals responsible for the distinctive looks found in our model homes.

## 1 VANITY CABINETS

Diamond Vibe Kenora  
Coastline | Slab Drawer

## 2 HARDWARE

Drawer & Door Pulls  
Matte Black

## 3 COUNTERTOP

Silestone Quartz  
Bohemian Flame Suede

## 4 FAUCET

Kohler Hint Pitch  
Black | Widespread

## 5 TILE FLOOR

Dal Moroccan Concrete  
Off White | 12x24 Offset

## 6 SHOWER TILE—WALLS

Daltile Mythology  
Olympus  
Rear Wall | Vertical Picket  
Side Walls | 4x12 Vertical Stack

## 7 SHOWER TILE—FLOOR

Dal Color Wheel Penny  
Matte Black | Penny Mosaic

## 8 SHOWER FIXTURES

Kohler Hint Pitch  
Matte Black

## 9 TOILET

Kohler Archer  
White | Comfort Height

## 10 SINK

Kohler Caxton  
White | Oval Undermount

## 11 BATH ACCESSORIES

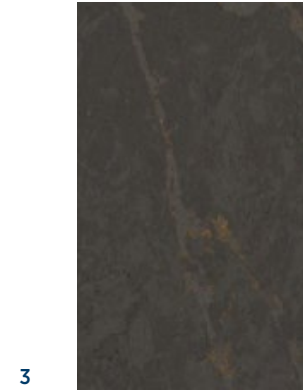
Moen Align  
Matte Black Towel Bar & Toilet Paper Holder



1



2



3



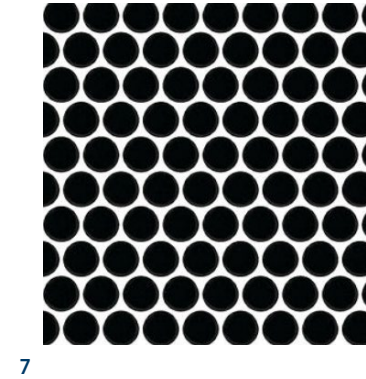
4



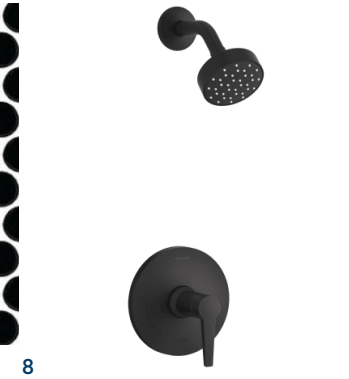
5



6



7



8



9



10



11

# Designer Appointed Features | POWDER BATH

Designer Appointed Features are home details and finishes curated by the talented design professionals responsible for the distinctive looks found in our model homes.

## 1 PEDESTAL SINK

Kohler Archer  
Widespread

## 2 FAUCET

Kohler Hint Pitch  
Matte Black | Widespread

## 3 FLOORING - STAINED OAK

Classic Gray  
Stained to match Oak treads on Stairs

## 4 TOILET

Kohler Archer  
White | Comfort Height

## 5 BATH ACCESSORIES

Moen Align  
Matte Black | Hand Towel & Toilet Paper Holder





# Designer Appointed Features | SECONDARY BATHROOM (TUB/SHOWER)

Designer Appointed Features are home details and finishes curated by the talented design professionals responsible for the distinctive looks found in our model homes.

## 1 VANITY CABINETS

Diamond Vibe Kenora  
Coastline | Slab Drawer

## 2 HARDWARE

Drawer & Door Pulls  
Matte Black

## 3 COUNTERTOP

Silestone Quartz  
Lime Delight Suede

## 4 FAUCET

Kohler Hint Pitch  
Matte Black | Single Hole

## 5 FLOORING - TILE

Dal Moroccan Concrete  
Off White | 12x24 Offset

## 6 SHOWER TILE—WALLS

Daltile Mythology Undulated  
Olympus | 4x12 Vertical Stack

## 7 TUB

Sterling Ensemble  
White | Vikrell

## 8 SHOWER FIXTURES

Kohler Hint Pitch  
Matte Black

## 9 TOILET

Kohler Archer  
White | Comfort Height

## 10 SINK

Kohler Caxton  
White | Oval Undermount

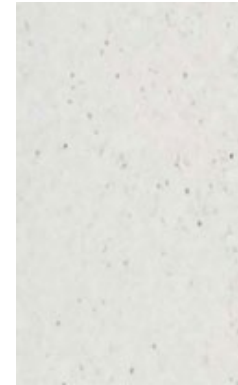
1



2



3



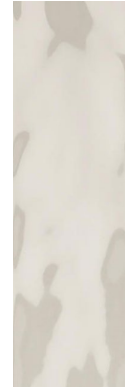
4



5



6



7



8



9



10



# Designer Appointed Features | SECONDARY BATHROOM WITH SHOWER

Designer Appointed Features are home details and finishes curated by the talented design professionals responsible for the distinctive looks found in our model homes.

## 1 VANITY CABINETS

Diamond Vibe Kenora  
Coastline | Slab Drawer

## 2 HARDWARE

Drawer & Door Pulls  
Matte Black

## 3 COUNTERTOP

Silestone Quartz  
Lime Delight Suede

## 4 FAUCET

Kohler Hint Pitch  
Matte Black | Single Hole

## 5 TILE FLOOR

DalMoroccan Concrete  
Off White | 12x24 Offset

## 6 SHOWER TILE—WALLS

Dal Mythology Undulated  
Olympus | 4x12 Vertical Stack

## 7 SHOWER TILE - FLOOR

DalMoroccan Concrete  
Off White | Hex Mosaic

## 8 SHOWER FIXTURES

Kohler Hint Pitch  
Matte Black

## 9 TOILET

Kohler Archer  
White | Comfort Height

## 10 SINK

Kohler Verticyl  
White | Round Undermount

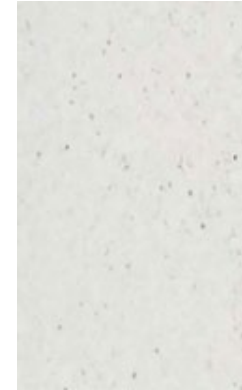
1



2



3



4



5



6



7



8



9



10

