

*Toll Brothers*  
AMERICA'S LUXURY HOME BUILDER®



3131 CAMINO

# Arya Contemporary

HOME SITE 26 | 3111 EL CAMINO REAL, UNIT 3 | SANTA CLARA, CA 95051

# Designer Appointed Features | EXTERIOR SELECTIONS

Designer Appointed Features are home details and finishes curated by the talented design professionals responsible for the distinctive looks found in our model homes.



- |  |  |  |  |   |
|--|--|--|--|---|
| <p><b>1</b>  <b>STUCCO BODY 1</b><br/>White Duck<br/>SW 7010</p>        | <p><b>3</b>  <b>FRONT DOOR</b><br/>Cyberspace<br/>SW 7076</p>             | <p><b>5</b>  <b>STUCCO BODY 3</b><br/>Gauntlet Gray<br/>SW 7019</p>                | <p><b>7</b>  <b>RAILING / METAL AWNING</b><br/>Iron Ore<br/>SW 7069</p> | <p><b>9</b>  <b>ROOF MATERIAL TPO</b><br/>Almond</p> |
| <p><b>2</b>  <b>STUCCO BODY 2</b><br/>Intellectual Gray<br/>SW 7045</p> | <p><b>4</b>  <b>GARAGE DOOR</b><br/>Rookwood Medium Brown<br/>SW 2807</p> | <p><b>6</b>  <b>WOOD LOOK LAP SIDING</b><br/>Rookwood Medium Brown<br/>SW 2807</p> | <p><b>8</b>  <b>WINDOWS</b><br/>Black</p>                               |   |

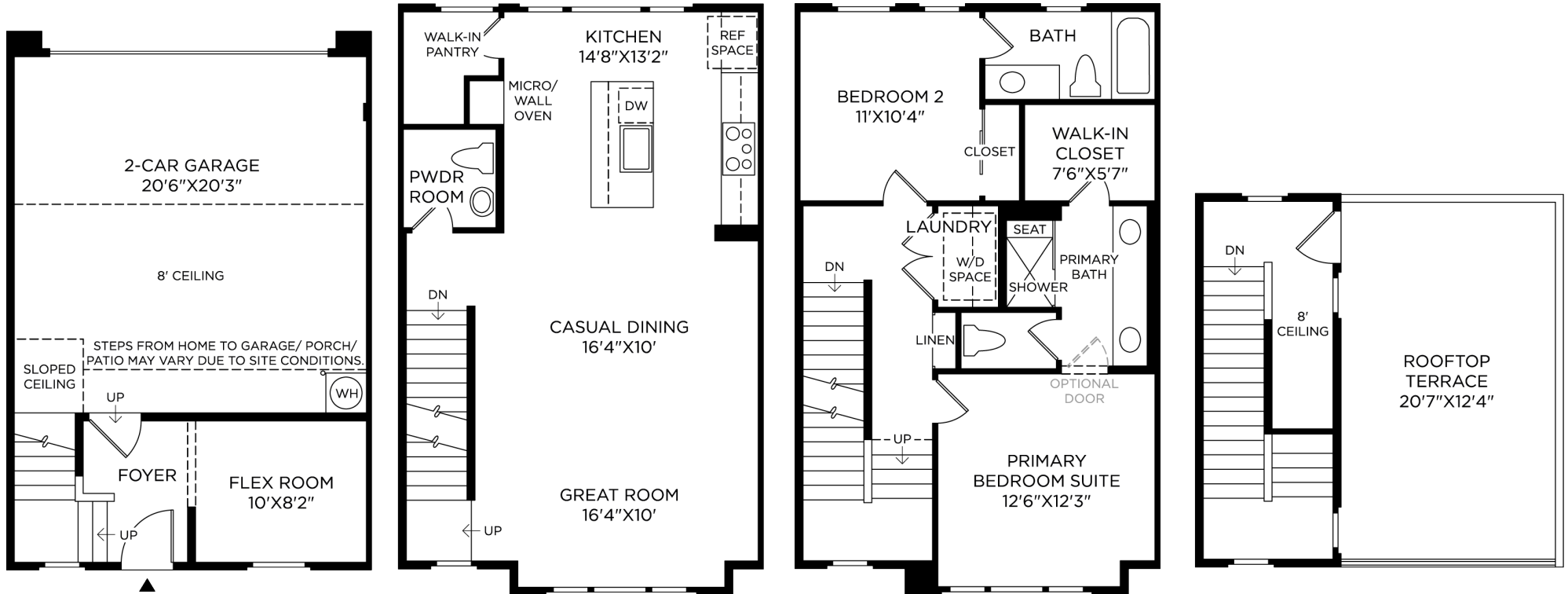
3131 CAMINO | ARYA CONTEMPORARY  
HOME SITE 26 | 3111 EL CAMINO REAL, UNIT 3 | SANTA CLARA, CA 95051

Prices and offers subject to change without notice. Products are subject to change without notice based on field conditions or other unforeseen circumstances. To the extent any features or options on this Designer Appointed Features (DAF) presentation conflict with the features or options on the initial Home Change Order, the initial Home Change Order shall control. This is not an offering where prohibited by law. Images are for representational purposes only and actual product may differ. Not all images may be shown. See online or onsite sales consultants for details.



# Designer Appointed Features | ARCHITECTURAL SELECTIONS

Designer Appointed Features are home details and finishes curated by the talented design professionals responsible for the distinctive looks found in our model homes.



# Designer Appointed Features | INTERIOR SELECTIONS

Designer Appointed Features are home details and finishes curated by the talented design professionals responsible for the distinctive looks found in our model homes.

## 1 WALL PAINT

Sherwin Williams  
Pure White SW 7005

## 2 INTERIOR DOORS

8' | 2-Panel | Solid Core Door

## 3 INTERIOR DOOR HANDLES

KwikSet  
Polished Chrome | Milan Square

## 4 FLOORING-CARPET

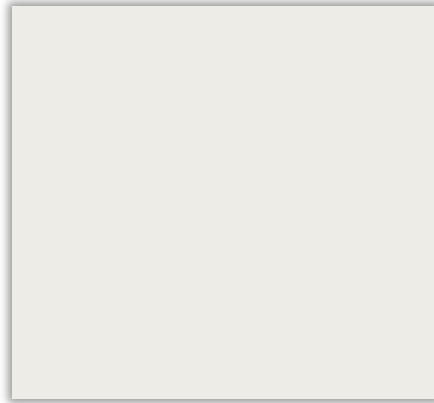
Shaw Flooring  
Shadow | Union Terrace

## 5 FLOORING-TILE

Emser  
White | Brook II

## 6 FLOORING-LVP

Shaw Floors  
Hearthstone Grey | House



1



2



3



4



5



6

# Designer Appointed Features | KITCHEN

Designer Appointed Features are home details and finishes curated by the talented design professionals responsible for the distinctive looks found in our model homes.

## 1 CABINETS

Precision Cabinets

Maple Stained Graphite | Shaker Door

## 2 HARDWARE

Satin Nickel | Blackrock Pull

## 3 COUNTERTOP-ISLAND

Arizona Tile

New Venatino Grey Polished | Quartz

## 4 COUNTERTOP-PERIMETER

Arizona Tile

New Venatino Grey Polished | Quartz

## 5 BACKSPLASH

Arizona Tile

White | Flash 3x12 Gloss | Herringbone

## 6 FLOORING-HARDWOOD

Manufacturer Product

Color | Size or Description

## 7 FAUCET

Kohler

Vibrant Stainless | Graze

## 8 SINK

Sterling

Stainless Steel | McAllister



1



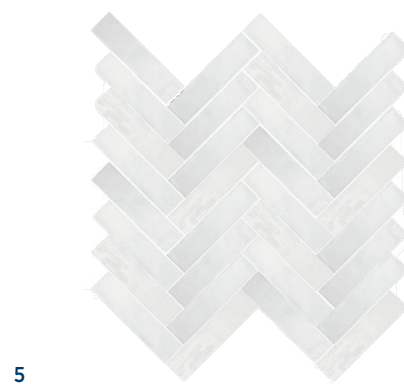
2



3



4



5



6



7



8

# Designer Appointed Features | KITCHEN APPLIANCES

Designer Appointed Features are home details and finishes curated by the talented design professionals responsible for the distinctive looks found in our model homes.

## 1 HOOD

KitchenAid  
36" Hood | 585 CFM

## 2 MICROWAVE

KitchenAid  
Microwave Drawer

## 3 OVEN

KitchenAid  
30" Electric Oven

## 4 COOKTOP

KitchenAid  
36" Induction Cooktop

## 5 DISHWASHER

KitchenAid  
44 dBA



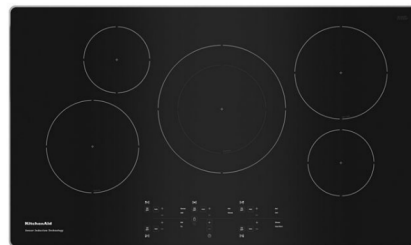
1



2



3



4



5

# Designer Appointed Features | POWDER ROOM - 2<sup>nd</sup> FLOOR

Designer Appointed Features are home details and finishes curated by the talented design professionals responsible for the distinctive looks found in our model homes.

## 1 PEDESTAL SINK

Sterling  
White | Sacramento

## 2 FAUCET

Kohler  
Brushed Nickel | Buckley

## 3 TOILET

Kohler  
White | Highline

## 4 FLOORING-LVP

Shaw Floors  
Hearthstone Grey | House

## 5 BATH ACCESSORIES

Kohler  
Brushed Nickel | Buckley



1



2



3



4



5

# Designer Appointed Features | PRIMARY BATHROOM

Designer Appointed Features are home details and finishes curated by the talented design professionals responsible for the distinctive looks found in our model homes.

## 1 VANITY CABINETS

Precision Cabinets

Maple Stained Graphite | Shaker Door

## 2 HARDWARE

Satin Nickel | Blackrock Pull

## 3 COUNTERTOP

Piedrafina

Glacier White

## 4 FAUCET

Kohler

Brushed Nickel | Buckley

## 5 SINK

Kohler

White | Caxton

## 6 SHOWER SURROUNDS

Piedrafina

Glacier White

## 7 SHOWER TILE—FLOOR

Dal Tile

Arctic White | Color Wheel 2x2

## 8 SHOWER FIXTURES

Kohler

Brushed Nickel | Buckley

## 9 TOILET

Kohler

White | Highline

## 10 BATH ACCESSORIES

Kohler

Brushed Nickel | Buckley

## 11 LIGHTING

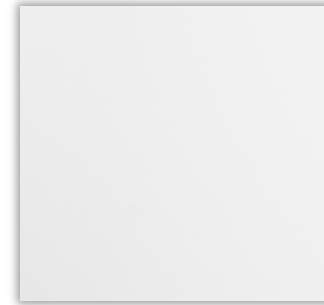
Progress Lighting

Brushed Nickel | Replay



1

2



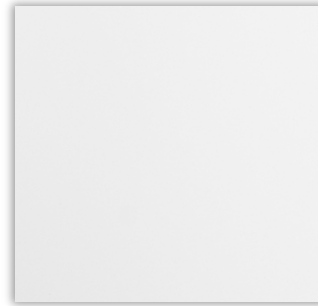
3



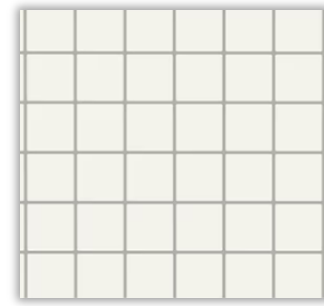
4



5



6



7



8



9



10



11

# Designer Appointed Features | SECONDARY BATHROOM

Designer Appointed Features are home details and finishes curated by the talented design professionals responsible for the distinctive looks found in our model homes.

## 1 VANITY CABINETS

Precision Cabinets

Maple Stained Graphite | Shaker Door

## 2 HARDWARE

Satin Nickel | Blackrock Pull

## 3 COUNTERTOP

Piedrafina

Glacier White

## 4 FAUCET

Kohler

Brushed Nickel | Buckley

## 5 SINK

Kohler

White | Caxton

## 6 TUB/SHOWER SURROUNDS

Piedrafina

Glacier White

## 7 TUB/SHOWER

Sterling

White | Ensemble

## 8 TUB/SHOWER FIXTURES

Kohler

Brushed Nickel | Buckley

## 9 TOILET

Kohler

White | Highline

## 10 BATH ACCESSORIES

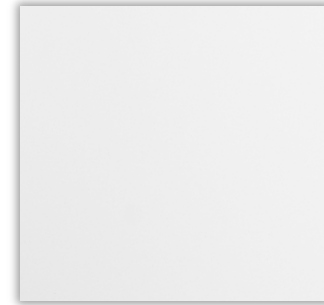
Kohler

Brushed Nickel | Buckley



1

2



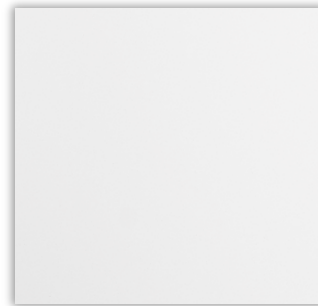
3



4



5



6



7



8



9



10