

*Toll Brothers*  
AMERICA'S LUXURY HOME BUILDER®



NORTHFIELD

# Payton Transitional

HOME SITE 8 | 4975 TRAVERS LN | CUMMING, GA 30040



# Designer Appointed Features | EXTERIOR SELECTIONS

Designer Appointed Features are home details and finishes curated by the talented design professionals responsible for the distinctive looks found in our model homes.



1		<b>PRIMARY</b> Magnolia Bay	3		<b>FRONT DOOR</b> Gossamer Veil	5		<b>FASCIA</b> White Heron SW 7627	7		<b>ROOF</b> Charcoal	9		<b>GUTTERS</b> Linen
2		<b>TRIM</b> White Heron SW 7627	4		<b>GARAGE DOOR</b> White Heron SW 7627	6		<b>SIDING</b> White Heron SW 7627	8		<b>METAL ROOF</b> Black	10		<b>WINDOW FRAME</b> White

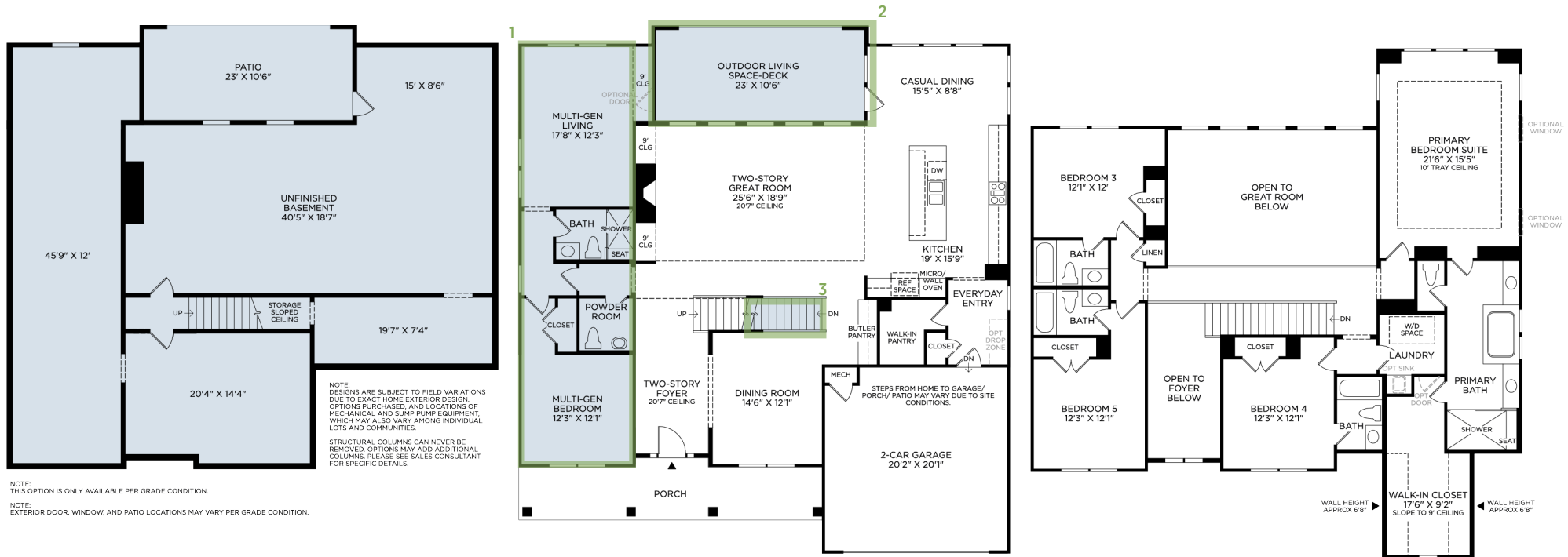
**NORTHFIELD | PAYTON TRANSITIONAL**  
**HOME SITE 8 | 4975 TRAVERS LN | CUMMING, GA 30040**

Photographs, renderings, and floor plans are for representational purposes only and may not reflect the exact features or dimensions of your home; actual product may differ. All dimensions are subject to field variations. Prices and offers subject to change without notice. This is not an offering where prohibited by law. Not all images may be shown. See online or onsite Sales Consultants for details.



# Designer Appointed Features | ARCHITECTURAL SELECTIONS

Designer Appointed Features are home details and finishes curated by the talented design professionals responsible for the distinctive looks found in our model homes.



## 1 MULTI-GEN SUITE

PC263480

## 3 OPEN STAIRS TO LOWER LEVEL

PC036484

## 2 OUTDOOR LIVING

PC263168



# Designer Appointed Features | INTERIOR SELECTIONS

Designer Appointed Features are home details and finishes curated by the talented design professionals responsible for the distinctive looks found in our model homes.

## 1 WALL PAINT

**SHERWIN WILLIAMS**  
PURE WHITE/ SW-7005

## 2 INTERIOR DOORS

**SHERWIN WILLIAMS**  
EXTRA WHITE/ SW-7006

## 3 INTERIOR DOOR HANDLES

**KWIKSET**  
HAILEX LEVER- BLACK

## 4 FLOORING-CARPET

**STONE PATH**  
WEATHERED

## 5 FLOORING-HARDWOOD

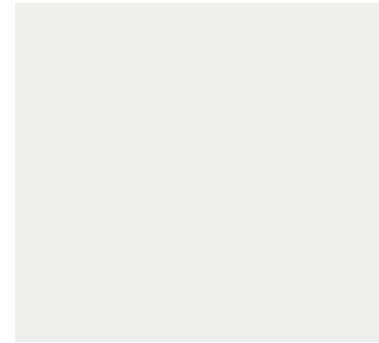
**SHAW**  
MARINER OAK- HORIZON

## 6 LIGHTING

**MODERN**  
GOLD



1



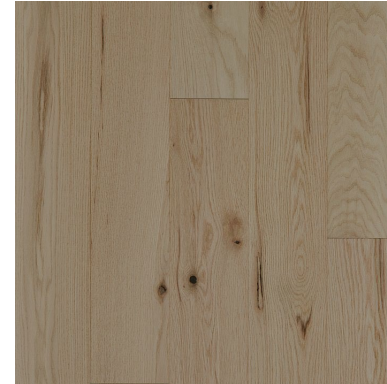
2



3



4



5



6

# Designer Appointed Features | KITCHEN

Designer Appointed Features are home details and finishes curated by the talented design professionals responsible for the distinctive looks found in our model homes.

## 1 CABINETS

### DIAMOND VIBE

KENORA W/ 5PC DRAWERS- COASTLINE

## 2 HARDWARE

### JEFFERY ALEXANDER

178 BG

## 3 COUNTERTOP

### SHAW

QUARTZ 3CM- ET GLOW

## 4 SINK

### KOHLER

8206-CM6 U/M SINGLE BASIN

## 5 BACKSPLASH

### SHAW

3 X 12 GATEWAY-100

## 6 FLOORING-HARDWOOD

### SHAW

MARINER OAK- HORIZON

## 7 FAUCET

### KOHLER

CRUE TOUCHLESS- 2MB

## 8 LIGHTING-DINING

### MODERN

BLACK

## 9 LIGHTING-ISLAND

### MODERN

BLACK

1



2



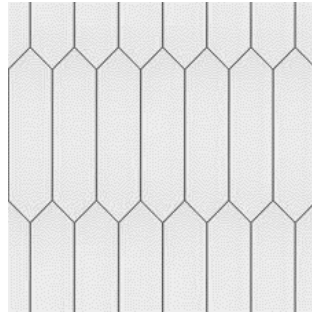
3



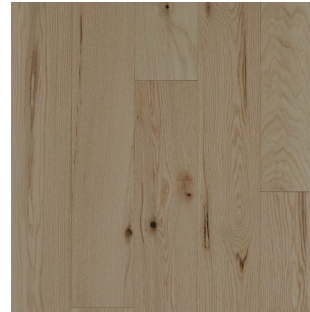
4



5



6



7



8



9



# Designer Appointed Features | KITCHEN APPLIANCES

Designer Appointed Features are home details and finishes curated by the talented design professionals responsible for the distinctive looks found in our model homes.

## 1 DISHWASHER

KITCHENAID  
KDTM405PPS

## 2 RANGE

KITCHENAID  
36" KCGC506JSS

## 3 VENT HOOD

KITCHENAID  
KVUC606KSS

## 4 WALL OVEN

KITCHENAID  
KOED530PSS

## 5 MICROWAVE

KITCHENAID  
KMBD104GSS

1



2



3



4



5



# Designer Appointed Features | POWDER ROOM

Designer Appointed Features are home details and finishes curated by the talented design professionals responsible for the distinctive looks found in our model homes.

## 1 CABINET

**DIAMOND VIBE**  
GRADON/ COASTLINE

## 2 FAUCET

**KOHLER**  
SINGLE HANDLE/ PURIST- 2MB

## 3 FLOORING-HARDWOOD

**SHAW**  
MARINER OAK- HORIZON

## 4 COUNTERTOP

**SHAW**  
QUARTZ 3CM- MIAMI ORO

## 5 HARDWARE

**JEFFERY ALEXANDER**  
136-MB

## 6 SINK

**KOHLER**  
K-20000 CAXTON RECTANGLE

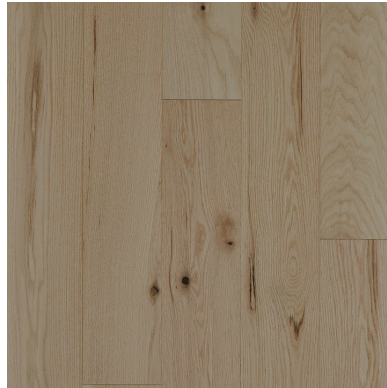
1



2



3



4



5



6



# Designer Appointed Features | PRIMARY BATHROOM

Designer Appointed Features are home details and finishes curated by the talented design professionals responsible for the distinctive looks found in our model homes.

## 1 CABINET

**DIAMOND VIBE**  
GRADON/ COASTLINE

## 2 HARDWARE

**JEFFERY ALEXANDER**  
136-MB

## 3 COUNTERTOP

**SHAW**  
QUARTZ 3CM- MIAMI ORO

## 4 FAUCET

**KOHLER**  
SINGLE HANDLE/ PURIST- 2MB

## 5 SINK

**KOHLER**  
K-20000 CAXTON RECTANGLE

## 6 SHOWER TILE—WALLS

**SHAW**  
12 X 24 ONYX-152 MATTE

## 7 SHOWER TILE—FLOOR

**SHAW**  
DEL RAY TG44F-221

## 8 SHOWER FIXTURES

**KOHLER**  
PURIST- 2MB

1



2



3



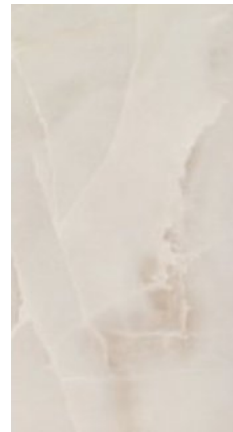
4



5



6



7



8





# Designer Appointed Features | SECNDARY BATHROOMS W/ SHOWER

Designer Appointed Features are home details and finishes curated by the talented design professionals responsible for the distinctive looks found in our model homes.

## 1 CABINET

**DIAMOND VIBE**  
GRADON/ COASTLINE

## 2 HARDWARE

**JEFFERY ALEXANDER**  
136-MB

## 3 COUNTERTOP

**SHAW**  
QUARTZ 3CM- MIAMI ORO

## 4 FAUCET

**KOHLER**  
SINGLE HANDLE/ PURIST- 2MB

## 5 SINK

**KOHLER**  
K-20000 CAXTON RECTANGLE

## 6 SHOWER TILE—WALLS

**SHAW**  
4 X 12 COOL CONTEMPORARY/ MYTHOLOGY-  
MY90 SANTORINI

## 7 SHOWER TILE—FLOOR

**SHAW**  
BAKER BLVD. TG79F-500

## 8 SHOWER FIXTURES

**KOHLER**  
PURIST- 2MB

1



2



3



4



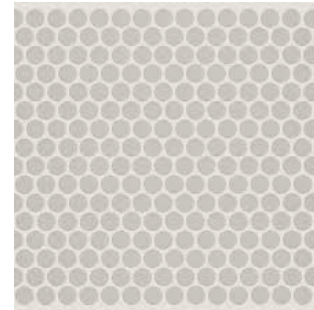
5



6



7



8



# Designer Appointed Features | SECONDARY BATHROOMS W/ TUB

Designer Appointed Features are home details and finishes curated by the talented design professionals responsible for the distinctive looks found in our model homes.

## 1 CABINET

**DIAMOND VIBE**  
GRADON/ COASTLINE

## 2 HARDWARE

**JEFFERY ALEXANDER**  
136-MB

## 3 COUNTERTOP

**SHAW**  
QUARTZ 3CM- MIAMI ORO

## 4 FAUCET

**KOHLER**  
SINGLE HANDLE/ PURIST- 2MB

## 5 SINK

**KOHLER**  
K-20000 CAXTON RECTANGLE

## 6 SHOWER TILE—WALLS

**SHAW**  
4 X 12 COOL CONTEMPORARY/ MYTHOLOGY-  
MY90 SANTORINI

## 7 BATHROOM TILE

**SHAW**  
12 X 24 SPHINX-200

## 8 SHOWER FIXTURES

**KOHLER**  
PURIST- 2MB

1



2



3



4



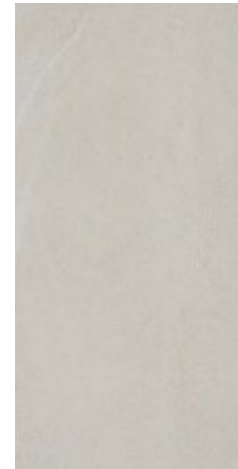
5



6



7



8

