

*Toll Brothers*  
AMERICA'S LUXURY HOME BUILDER®



568 WEST

# Fawcett Manchester

HOME SITE 16 | 509 MOTIVATION CIRCLE NW | ATLANTA, GA 30309



# Designer Appointed Features | EXTERIOR SELECTIONS

Designer Appointed Features are home details and finishes curated by the talented design professionals responsible for the distinctive looks found in our model homes.



1		<b>UPPER CLADDING</b>	3		<b>FRONT DOOR</b>	5		<b>BAYS</b>	7		<b>FOUNDATION</b>	9		<b>RAILINGS</b>
2		<b>LOWER CLADDING</b>	4		<b>GARAGE DOOR</b>	6		<b>PANEL WINDOW</b>	8		<b>GUTTERS</b>	10		<b>WINDOWS</b>

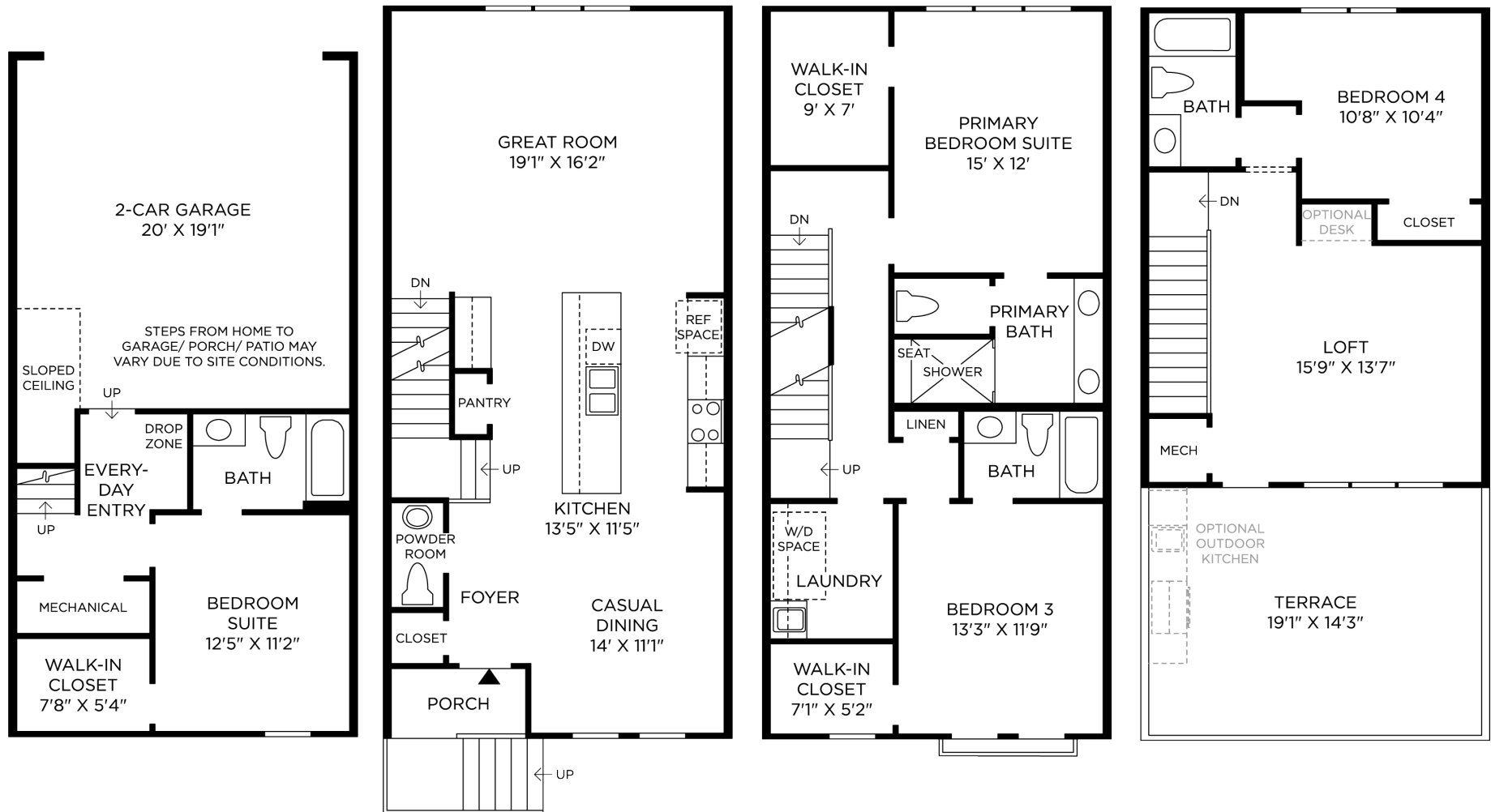
568 WEST | FAWCETT MANCHESTER  
HOME SITE 16 | 509 MOTIVATION CIRCLE NW | ATLANTA, GA 30309

Photographs, renderings, and floor plans are for representational purposes only and may not reflect the exact features or dimensions of your home; actual product may differ. All dimensions are subject to field variations. Prices and offers subject to change without notice. This is not an offering where prohibited by law. Not all images may be shown. See online or onsite Sales Consultants for details.



# Designer Appointed Features | ARCHITECTURAL SELECTIONS

Designer Appointed Features are home details and finishes curated by the talented design professionals responsible for the distinctive looks found in our model homes.



## 1 DRY BAR

PC132485 (not shown)

## 2 ELECTRIC FIREPLACE 50" ALLUSION PLTNM

PC106262 (not shown)

## 3 SEC BATH - SHOWER STALL W/ TILE FLOOR

PC048644 (not shown)

# Designer Appointed Features | EXTERIOR SELECTIONS

Designer Appointed Features are home details and finishes curated by the talented design professionals responsible for the distinctive looks found in our model homes.

## 1 EXPOSED FOUNDATION WALL

**Sherwin Williams**  
OLYMPUS WHITE / #SW-6253

## 2 BAYS & PANELIZED WINDOWS

**Sherwin Williams**  
ACACIA HAZE / #SW-9132

## 3 UPPER CLADDING/ROOF TERACE/TIME & CORNICES AT UPPER CLADDING

**Sherwin Williams**  
OLYMPUS WHITE / #SW-6253

## 4 LOWER CLADDING/TRIM & CORNICES AT LOWER CLADDING

**Sherwin Williams**  
TINSMITH / #SW-7656

## 5 GUTTERS

**Sherwin Williams**  
BLACK EMERALD / #SW-2936

## 6 FRONT DOOR

**Sherwin Williams**  
STILL WATER / #SW-6223

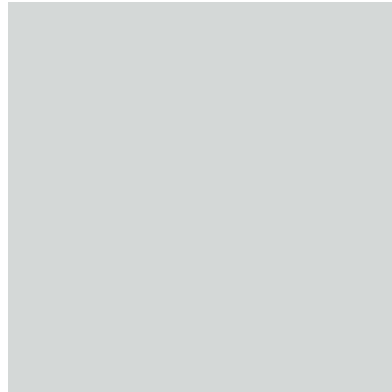
## 7 WINDOWS

**Vinyl**  
WHITE

## 8 GARAGE

**Sherwin Williams**  
TAUPE / #SW-6038

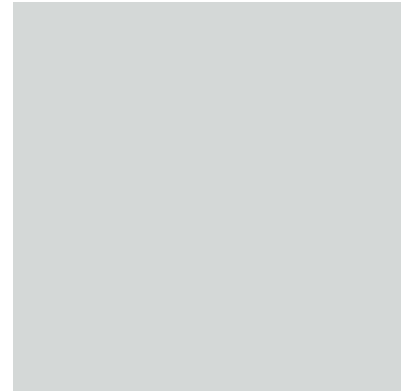
1



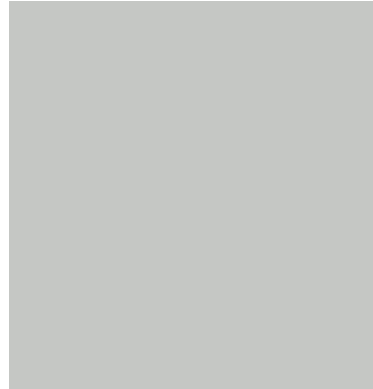
2



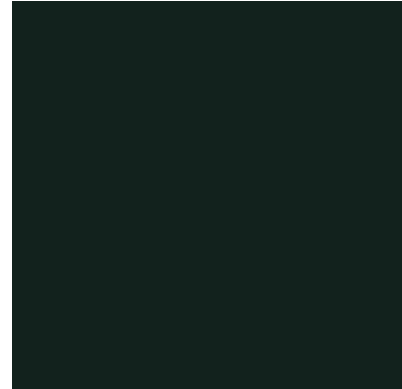
3



4



5



6



7



8



# Designer Appointed Features | INTERIOR SELECTIONS

Designer Appointed Features are home details and finishes curated by the talented design professionals responsible for the distinctive looks found in our model homes.

## 1 FLOORING-LUXURY HARD SURFACE

Shaw

BRIO PLUS - HIGHLIGHT OAK

## 2 FLOORING-CARPET

Shaw

STONE PATH - WEATHERED

## 3 INTERIOR DOOR HANDLES

Kwikset

LADERA LEVER SET - SATIN NICKEL

## 4 EXTERIOR DOOR HARDWARE

Kwikset

AMADOR HANDLESET - SATIN NICKEL

## 5 CEILING LIGHTS

Progress

EMBLEM LED LIGHTS

1



2



3



4



5





# Designer Appointed Features | KITCHEN

Designer Appointed Features are home details and finishes curated by the talented design professionals responsible for the distinctive looks found in our model homes.

## 1 CABINETS

**Diamond Vibe**

BRYANT - WHITE

## 2 HARDWARE

**Jeffrey Alexander**

DRAWERS - SQUARE BAR PULL POLISHED

CHROME

DOORS - KNOB - POLISHED CHROME

## 3 COUNTERTOP-ISLAND

**Silestone**

CEMENTO

## 4 COUNTERTOP-PERIMETER

**Silestone**

CEMENTO

## 5 BACKSPLASH

**Shaw**

3 X 6 GLOSS WHITE / HERRINGBONE PATTERN

## 6 FLOORING-LUXURY HARD SURFACE

**Shaw**

BRIO PLUS - HIGHLIGHT OAK

## 7 FAUCET

**Kohler**

CRUE - MATTE BLACK

## 8 SINK

**Kohler**

STAINLESS STEEL SINGLE BOWL UNDERMOUNT

## 9 LIGHTING-ISLAND

**Progress**

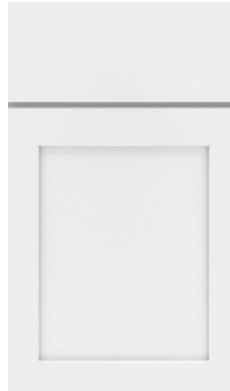
ALEXA - BRUSHED NICKEL

## 10 LIGHTING-DINING

**Progress**

ALEXA - BRUSHED NICKEL

1



2



3



4



5



6



7



8



9



10



# Designer Appointed Features | KITCHEN APPLIANCES

Designer Appointed Features are home details and finishes curated by the talented design professionals responsible for the distinctive looks found in our model homes.

## 1 DISHWASHER

Whirlpool  
WDT750SAKZ

## 2 RANGE

Whirlpool  
WFE51550JS

## 3 VENT HOOD

Whirlpool  
WVW53UC0LS

## 4 MICRO-DRAWER

Sharp  
KB6524PS

1



2



3



4



# Designer Appointed Features | POWDER ROOM

Designer Appointed Features are home details and finishes curated by the talented design professionals responsible for the distinctive looks found in our model homes.

## 1 PEDESTAL SINK

**Kohler**  
STERLING SACRAMENTO

## 2 FAUCET

**Kohler**  
SIMPLICE WIDESPREAD / POLISHED CHROME

## 3 TOILET

**Kohler**  
WELLWORTH STANDARD HEIGHT

## 4 FLOORING

**Shaw**  
BRIO PLUS - HIGHLIGHT OAK

## 5 LIGHTING

**Progress**  
EMBLEM LED LIGHTS

## 6 MIRROR

**Framed Mirror**

1



2



3



4



5



6





# Designer Appointed Features | PRIMARY BATHROOM

Designer Appointed Features are home details and finishes curated by the talented design professionals responsible for the distinctive looks found in our model homes.

## 1 VANITY CABINETS

**Diamond Vibe**  
BRYANT - WHITE

## 2 HARDWARE

**Jeffrey Alexander**  
DRAWERS - SQUARE BAR PULL POLISHED CHROME  
DOORS - KNOB - POLISHED CHROME

## 3 COUNTERTOP

**Hi Macs**  
NORDIC WHITE

## 4 FAUCET

**Kohler**  
SIMPLICE WIDESPREAD / POLISHED CHROME

## 5 SINK

**Kohler**  
RECTANGULAR UNDERMOUNT

## 6 SHOWER TILE—WALLS

**Shaw**  
4 X 12 WHITE BAKER BLVD VERTICAL STACK

## 7 SHOWER TILE—FLOOR

**Emser**  
12 X 24 GLAZED PORCELAIN SILHOUETTE SHADOW

## 8 SHOWER TILE—SHOWER PAN

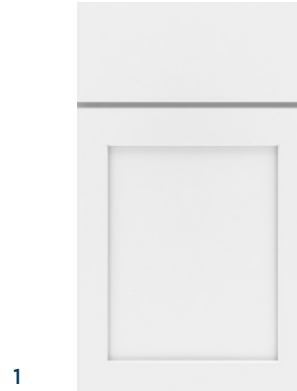
**Shaw**  
2 X 2 MOSAIC TAUPE

## 9 SHOWER FIXTURE

**Kohler**  
SIMPLICE WIDESPREAD / POLISHED CHROME

## 10 TOILET

**Kohler**  
WELLWORTH STANDARD HEIGHT



1



2



3



4



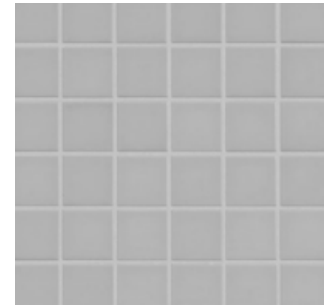
5



6



7



8



9



10

# Designer Appointed Features | SECONDARY SHOWER BATHROOM

Designer Appointed Features are home details and finishes curated by the talented design professionals responsible for the distinctive looks found in our model homes.

## 1 VANITY CABINETS

**Diamond Vibe**  
BRYANT - WHITE

## 2 HARDWARE

**Jeffrey Alexander**  
DRAWERS - SQUARE BAR PULL POLISHED CHROME  
DOORS - KNOB - POLISHED CHROME

## 3 COUNTERTOP

**Hi Macs**  
NORDIC WHITE

## 4 FAUCET

**Kohler**  
SIMPLICE WIDESPREAD / POLISHED CHROME

## 5 SINK

**Kohler**  
RECTANGULAR UNDERMOUNT

## 6 SHOWER TILE—WALLS

**Shaw**  
12 X 24 OMEGA

## 7 SHOWER TILE—FLOOR

**Emser**  
12 X 24 OMEGA

## 8 SHOWER TILE—SHOWER PAN

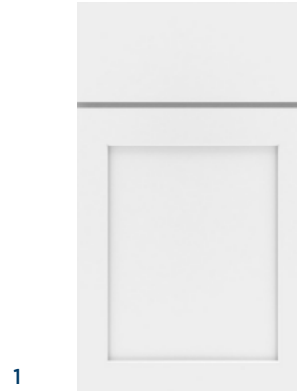
**Shaw**  
2 X 2 MOSAIC TAUPE

## 9 SHOWER FIXTURE

**Kohler**  
SIMPLICE WIDESPREAD / POLISHED CHROME

## 10 TOILET

**Kohler**  
WELLWORTH STANDARD HEIGHT



1



2



3



4



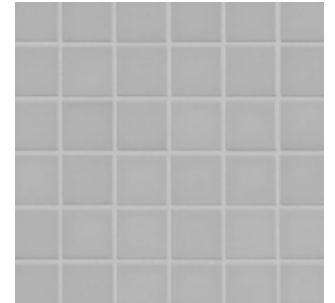
5



6



7



8



9



10

# Designer Appointed Features | SECONDARY TUB BATHROOM

Designer Appointed Features are home details and finishes curated by the talented design professionals responsible for the distinctive looks found in our model homes.

## 1 VANITY CABINETS

**Diamond Vibe**

BRYANT - WHITE

## 2 HARDWARE

**Jeffrey Alexander**

DRAWERS - SQUARE BAR PULL POLISHED

CHROME

DOORS - KNOB - POLISHED CHROME

## 3 COUNTERTOP

**Hi Macs**

NORDIC WHITE

## 4 FAUCET

**Kohler**

SIMPLICE WIDESPREAD / POLISHED CHROME

## 5 SINK

**Kohler**

RECTANGULAR UNDERMOUNT

## 6 SHOWER TILE—WALLS

**Shaw**

12 X 24 OMEGA

## 7 SHOWER TILE—FLOOR

**Emser**

12 X 24 OMEGA

## 8 SHOWER FIXTURE

**Kohler**

SIMPLICE WIDESPREAD / POLISHED CHROME

## 9 TOILET

**Kohler**

WELLWORTH STANDARD HEIGHT

