

*Toll Brothers*  
AMERICA'S LUXURY HOME BUILDER®



OVERLOOK BY TOLL BROTHERS - REGENCY VILLAS COLLECTION

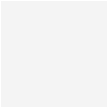




# Alstead New England

HOME SITE 62 | 2052 SUMMIT LOOP | CARMEL, NY 10512

# Designer Appointed Features | EXTERIOR SELECTIONS

Designer Appointed Features are home details and finishes curated by the talented design professionals responsible for the distinctive looks found in our model homes.



- |  |  |  |  |
|--|--|--|--|
| <p><b>1</b>  <b>SIDING/ B&amp;B</b><br/>Snow<br/>Certaineed</p>                     | <p><b>3</b>  <b>FRONT DOOR</b><br/>Black</p>  | <p><b>5</b>  <b>WINDOWS</b><br/>Black</p>    | <p><b>7</b>  <b>ROOF</b><br/>Charcoal<br/>GAF Timberline</p>  |
| <p><b>2</b>  <b>SIDING TRIM/ B&amp;B TRIM</b><br/>Colonial White<br/>Certaineed</p> | <p><b>4</b>  <b>GARAGE DOOR</b><br/>White</p> | <p><b>6</b>  <b>METAL ROOF</b><br/>Black</p> | <p><b>8</b>  <b>STONE</b><br/>Larchmont Harbor<br/>Ashlar</p> |

OVERLOOK BY TOLL BROTHERS – REGENCY VILLAS COLLECTION | ALSTEAD NEW ENGLAND  
HOME SITE 62 | 2052 SUMMIT LOOP | CARMEL, NY 10512

Photographs, renderings, and floor plans are for representational purposes only and may not reflect the exact features or dimensions of your home; actual product may differ. All dimensions are subject to field variations. Prices and offers subject to change without notice. This is not an offering where prohibited by law. Not all images may be shown. See online or onsite Sales Consultants for details. The terms of the offering are contained in an Offering Plan available from Sponsor. Files #CP24-0043 & #CP24-0056.



# Designer Appointed Features | ARCHITECTURAL SELECTIONS

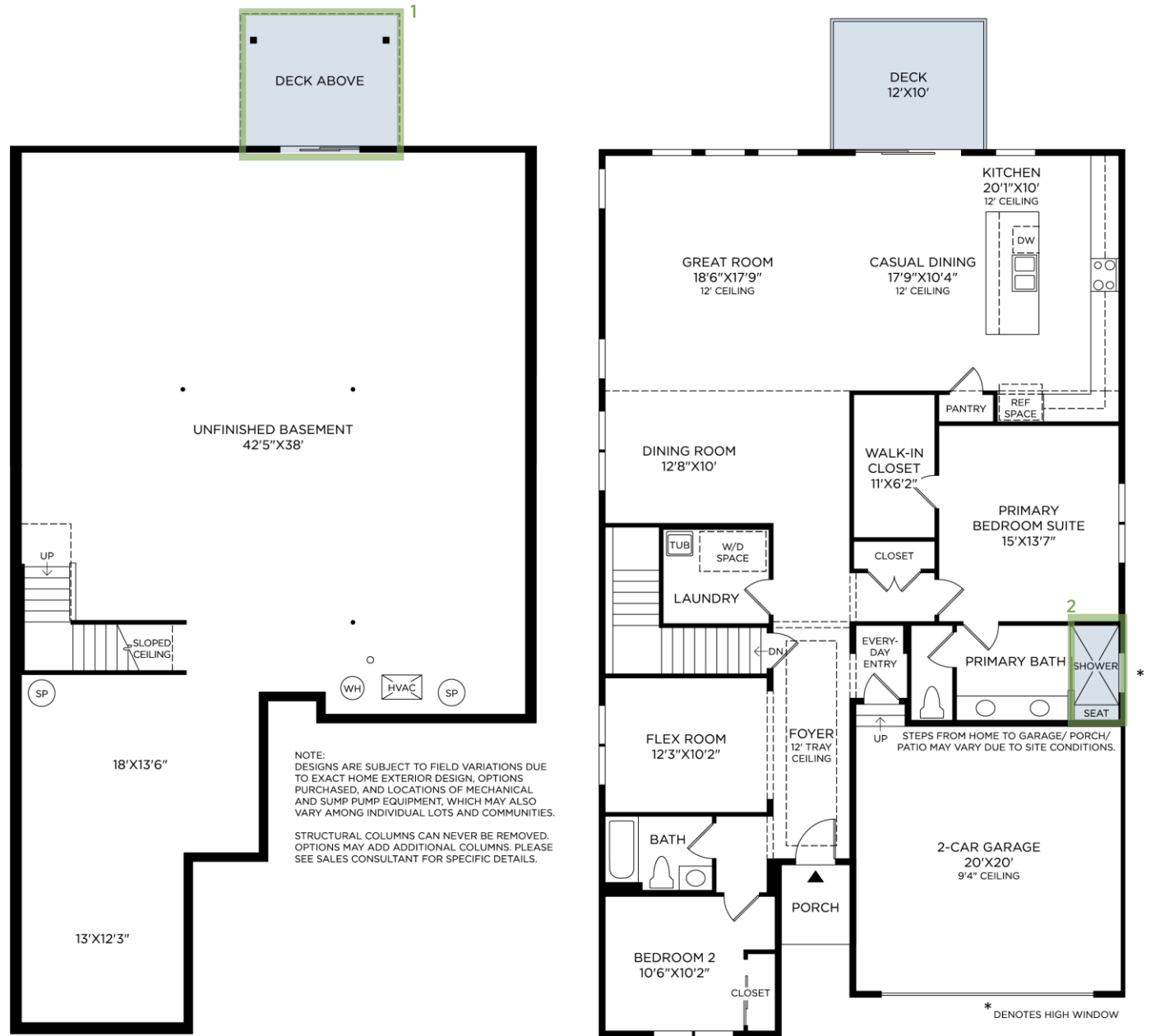
Designer Appointed Features are home details and finishes curated by the talented design professionals responsible for the distinctive looks found in our model homes.

## 1 WALKOUT BASEMENT

## 2 ALTERNATE PRIMARY SHOWER

## 3 ADDITIONAL 3050 WINDOW (2)

(not shown)



# Designer Appointed Features | INTERIOR SELECTIONS

Designer Appointed Features are home details and finishes curated by the talented design professionals responsible for the distinctive looks found in our model homes.

## 1 WALL PAINT

**Sherwin Williams**  
Pure White

## 2 INTERIOR DOORS

**Masonite | Lincoln Park**  
1-Panel | Smooth Finish | Hollow Core

## 3 INTERIOR DOOR HANDLES

**Kwikset | Halifax Lever**  
Matte Black | Square

## 4 FLOORING-TILE

**American Olean | AO Union**  
Platinum White | 12"x24"

## 5 FLOORING-HARDWOOD

**Shaw | Stateside Oak**  
Tradition | 7" Wide White Oak Plank

## 6 LIGHTING- FOYER

**Progress | Gather**  
Brushed Nickel | 2 Light | Semi-Flush | 12 7/8" W x 10 3/8" H



1



2



3



4



5



6

# Designer Appointed Features | KITCHEN

Designer Appointed Features are home details and finishes curated by the talented design professionals responsible for the distinctive looks found in our model homes.

## 1 CABINETS

**Century Cabinetry | Malibu**  
White | Perimeter & Island

## 2 HARDWARE

**Century Cabinetry | Ascendra**  
Brushed Satin Nickel

## 3 COUNTERTOP

**MSI Quartz**  
Calacatta Duolina | Eased Edge

## 4 BACKSPLASH

**Daltile | Mythology**  
Olympus | 2"x5" Picket | Horizontal Lay

## 5 FLOORING-HARDWOOD

**Shaw | Stateside Oak**  
Tradition | 7" Wide White Oak Plank

## 6 FAUCET

**Kohler | Crue**  
Vibrant Stainless | Pull-Down

## 7 SINK

**Kohler | Vault**  
Stainless Steel | Undermount

## 8 LIGHTING- ISLAND

**Progress | Atwell**  
Brushed Nickel | 12"

## 9 LIGHTING-CASUAL DINING

**Progress | Replay**  
Brushed Nickel | 5 Light | 21" D x 19 5/8" H

## 10 LIGHTING-DINING ROOM

**Progress | Cherish**  
Brushed Nickel | 24" L x 24" D x 22 3/8"H



1



2



3



4



5



6



7



8



9



10

# Designer Appointed Features | KITCHEN APPLIANCES

Designer Appointed Features are home details and finishes curated by the talented design professionals responsible for the distinctive looks found in our model homes.

## 1 MICROWAVE HOOD

**KitchenAid | Microwave Hood**  
30" | Stainless Steel

## 2 DISHWASHER

**KitchenAid | Dishwasher**  
24" | Stainless Steel

## 3 RANGE

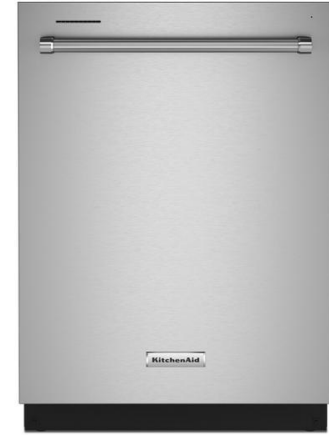
**KitchenAid | Electric Range**  
30" | Stainless Steel | Slide In Range | Electric

## 4 REFRIGERATOR

**KitchenAid | Refrigerator**  
36" | Stainless Steel | French Door | Counter Depth



1



2



3



4

# Designer Appointed Features | PRIMARY BATHROOM

Designer Appointed Features are home details and finishes curated by the talented design professionals responsible for the distinctive looks found in our model homes.

## 1 VANITY CABINETS

Century Cabinetry | Malibu  
White

## 2 HARDWARE

Century Cabinetry | Ascendra  
Brushed Satin Nickel

## 3 COUNTERTOP

MSI | Quartz  
Calacatta Duolina | Eased Edge

## 4 FAUCET

Kohler | Hint/Pitch  
Brushed Nickel | 8" Widespread

## 5 SINK

Kohler | Caxton Undermount  
White | 7-5/16" x 15-15/16" x 20-9/16"

## 6 SHOWER TILE—WALLS

DalTile | Multitude Wave  
White | 12" x 24" | Horizontal Stacked

## 7 SHOWER TILE—FLOOR

American Olean | Union  
Platinum White | 2" x 3" Mosaic

## 8 FLOORING- TILE

American Olean | Union  
Platinum White | 12" x 24" | 33% Offset

## 9 SHOWER FIXTURE

Kohler | Hint/Pitch  
Brushed Nickel | Showerhead & Handshower

## 10 TOILET

Kohler | Archer  
White | Comfort Height

## 11 BATH ACCESSORIES

Kohler | Elate  
Brushed Nickel

## 12 LIGHTING

Progress | Gather  
Brushed Nickel | 2-Light | 12" L



1



2



3



4



5



6



7



8



9



10



11



12

# Designer Appointed Features | HALL BATH

Designer Appointed Features are home details and finishes curated by the talented design professionals responsible for the distinctive looks found in our model homes.

## 1 VANITY CABINET

Century Cabinetry | Malibu  
White

## 2 HARDWARE

Century Cabinetry | Ascendra  
Brushed Satin Nickel

## 3 COUNTERTOP

MSI | Quartz  
Calacatta Duolina | Eased Edge

## 4 FAUCET

Kohler | Hint/Pitch  
Brushed Nickel

## 5 SINK

Kohler | Caxton Undermount  
White | 7- 5/16" x 15- 15/16" x 20- 9/16"

## 6 SHOWER TILE- WALLS

DalTile | Mythology  
Santorini | | 4" x 12" | Vertical Stacked

## 7 TUB

Sterling | Ensemble  
White | 60" x 30"

## 8 FLOORING-TILE

American Olean | Union  
Platinum White | 12" x 24" | 33% Offset

## 9 TUB/SHOWER FIXTURE

Kohler | Hint/Pitch  
Brushed Nickel

## 10 TOILET

Kohler | Archer  
White | Comfort Height

## 11 BATH ACCESSORIES

Kohler | Elate  
Brushed Nickel

## 12 LIGHTING

Progress | Gather  
Brushed Nickel | 2-Light | 12" L



1



2



3



4



5



6



7



8



9



10



11



12