

*Toll Brothers*  
AMERICA'S LUXURY HOME BUILDER®



BRIDLEFIELD | HIGHLANDS COLLECTION

# Antoinette Newhaven

HOME SITE 69 | 6110 CLYDESDALE COURT | CUMMING, GA 30040



# Designer Appointed Features | EXTERIOR SELECTIONS

Designer Appointed Features are home details and finishes curated by the talented design professionals responsible for the distinctive looks found in our model homes.



1



## SIDING

Light French Gray  
SW 0055

3



## FRONT DOOR

Night Out  
SW 9560

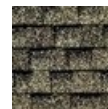
5



## BRICK

Light French Gray  
SW 0055

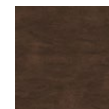
7



## ROOF

Weathered Wood  
GAF

9



## WOOD

Charwood

2



## METAL ROOF

Black

4



## GARAGE DOOR

Light French Gray  
SW 0055

6



## FASCIA/TRIM

Light French Gray  
SW 0055

8



## WINDOW FRAME

White

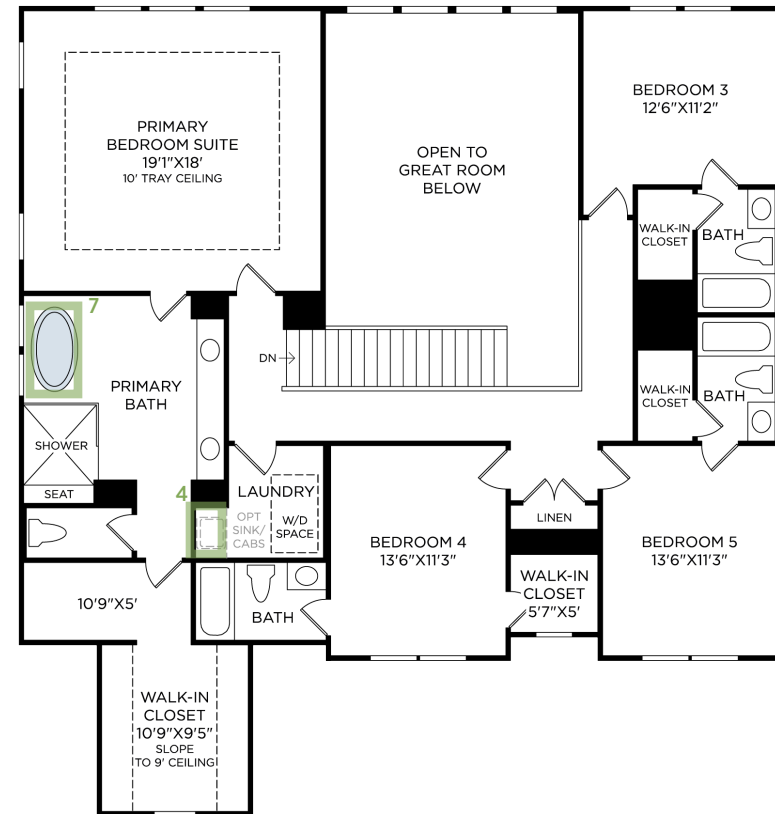
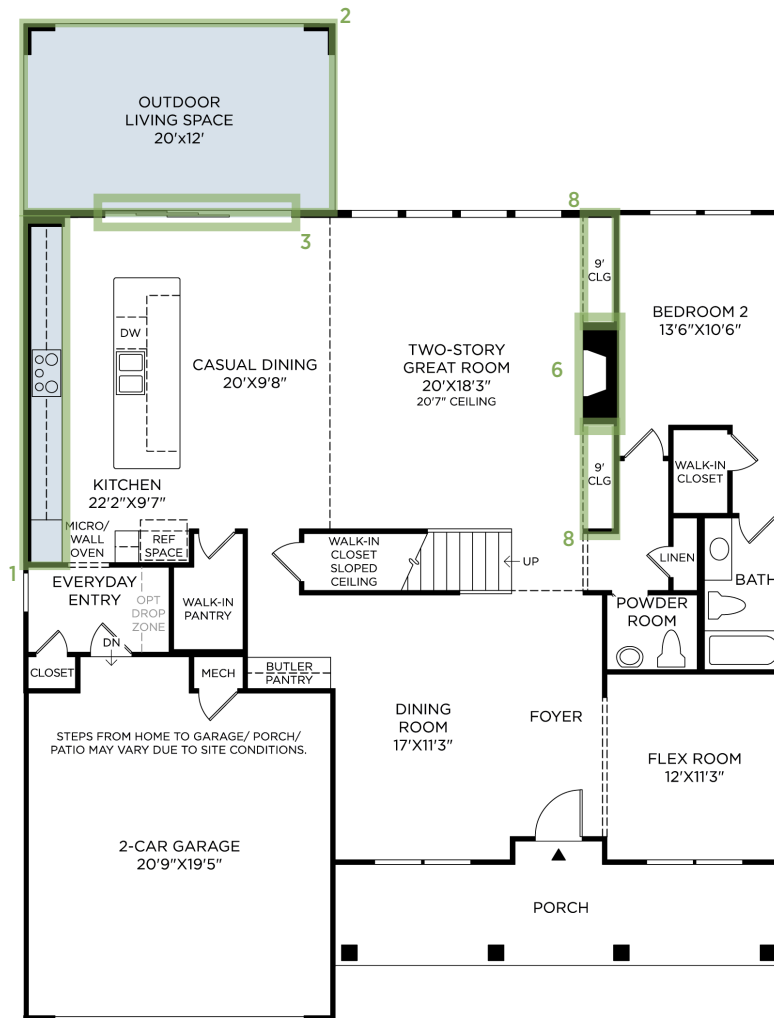
BRIDLEFIELD | HIGHLANDS COLLECTION | ANTOINETTE NEWHAVEN  
HOME SITE 69 | 6110 CLYDESDALE COURT | CUMMING, GA 30040

Photographs, renderings, and floor plans are for representational purposes only and may not reflect the exact features or dimensions of your home. All dimensions are subject to field variations. Prices and offers subject to change without notice. This is not an offering where prohibited by law. Images are for representational purposes only and actual product may differ. Not all images may be shown. See online or onsite sales consultants for details.



# Designer Appointed Features | STRUCTURAL OPTIONS

Designer Appointed Features are home details and finishes curated by the talented design professionals responsible for the distinctive looks found in our model homes.



1 ALTERNATE KITCHEN LAYOUT

3 MULTI-SLIDE STACKED DOOR

5 CONVERT MAIN LEVEL BATH TO FULL SHOWER  
(not shown)

7 FREE-STANDING TUB REPLACES INCLUDED TUB

2 OUTDOOR LIVING SPACE

4 LAUNDRY ROOM SINK

6 TRADITIONAL FIREPLACE 42"

8 BUILT-IN AT GREAT ROOM



# Designer Appointed Features | INTERIOR SELECTIONS

Designer Appointed Features are home details and finishes curated by the talented design professionals responsible for the distinctive looks found in our model homes.

## 1 WALL PAINT

**Sherwin Williams**  
HERON PLUME | #SW-7005

## 2 INTERIOR DOORS / TRIM

**Sherwin Williams**  
EXTRA WHITE | #SW-7006

## 3 INTERIOR DOOR HANDLES

**Kwikset**  
MATTE BLACK | HANCOCK KNOB

## 4 FLOORING-CARPET

**Shaw**  
ENCHANTMENT | NATURAL WOOD

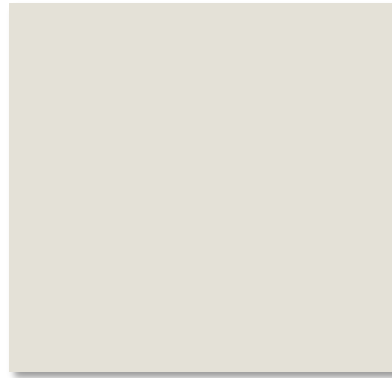
## 5 FLOORING-HARDWOOD

**Shaw**  
HERITAGE | 6.38" HOMELAND OAK

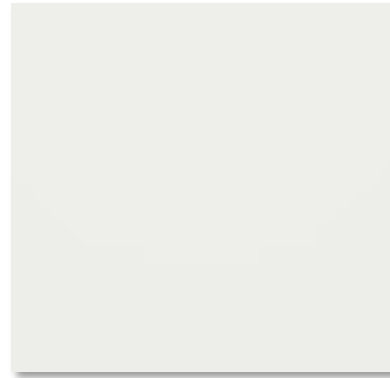
## 6 LIGHTING

**Progress**  
BLACK | REPLAY

1



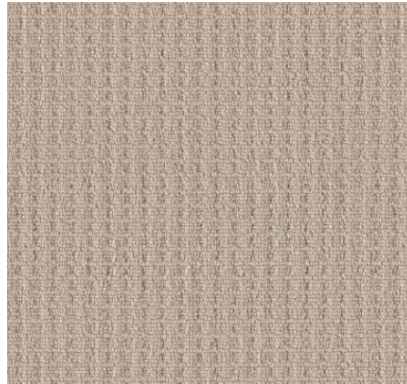
2



3



4



5



6



# Designer Appointed Features | KITCHEN

Designer Appointed Features are home details and finishes curated by the talented design professionals responsible for the distinctive looks found in our model homes.

## 1 CABINETS

### Diamond

MOREL | GRADON  
WHITE | GRADON

## 2 HARDWARE

### Jeffrey Alexander

625-128MB

## 3 COUNTERTOP-ISLAND

### Silestone

LUSSO | 3CM QUARTZ

## 4 COUNTERTOP-PERIMETER

### Silestone

LUSSO | 3CM QUARTZ

## 5 BACKSPLASH

### Daltile

TRANCE | 3 X 12 MESMERIST GLOSSY- OFFSET

## 6 FLOORING-HARDWOOD

### Shaw

HERITAGE | 6.38" HOMELAND OAK

## 7 FAUCET

### Kohler

MATTE BLACK | CRUE

## 8 SINK

### Kohler

STAINLESS STEEL | SINGLE BOWL UNDERMOUNT

## 9 LIGHTING-ISLAND

### Progress

BLACK | REPLAY



1



2



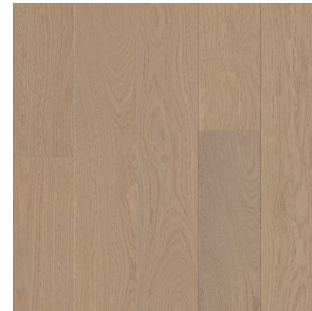
3



4



5



6



7



8



9

# Designer Appointed Features | KITCHEN APPLIANCES

Designer Appointed Features are home details and finishes curated by the talented design professionals responsible for the distinctive looks found in our model homes.

## 1 **RANGETOP**

**KitchenAid**  
KCGC506JSS

## 2 **VENT HOOD**

**KitchenAid**  
KVUC606KSS

## 3 **WALL OVEN**

**KitchenAid**  
KOED530PSS

## 4 **MICROWAVE**

**KitchenAid**  
KMBD104GSS

## 5 **DISHWASHER**

**KitchenAid**  
KDTM405PPS



1



2



3



4



5

# Designer Appointed Features | POWDER ROOM

Designer Appointed Features are home details and finishes curated by the talented design professionals responsible for the distinctive looks found in our model homes.

- 1

VANITY

Diamond

MOREL | GRADON
- 2

FAUCET

Kohler

MATTE BLACK | SINGLE HANDLE HINT/PITCH
- 3

TOILET

Kohler

WHITE | WINDHAM
- 4

FLOORING

Shaw

HERITAGE | 6.38" HOMELAND OAK

1



2



3



4



# Designer Appointed Features | PRIMARY BATHROOM

Designer Appointed Features are home details and finishes curated by the talented design professionals responsible for the distinctive looks found in our model homes.

## 1 VANITY CABINETS

**Diamond**

MOREL | GRADON

## 2 HARDWARE

**Jeffrey Alexander**

625-128MB

## 3 COUNTERTOP

**Hi-Macs**

NORDIC WHITE

## 4 FAUCET

**Kohler**

MATTE BLACK | WIDESPREAD HINT/PITCH

## 5 SINK

**Kohler**

OVAL UNDERMOUNT

## 6 SHOWER TILE—WALLS

**Daltile**

DIAMOND | 12 X 24 FAMED MATTE | OFFSET

## 7 SHOWER TILE—FLOOR

**Marazzi**

OFF WHITE | 12 X 24 MOROCCAN CONCRETE

## 8 SHOWER PAN

**Marazzi**

DIAMOND | PENNY ROUND FAMED MOSAIC

## 9 SHOWER FIXTURES

**Kohler**

MATTE BLACK | HINT/PITCH

## 10 TOILET

**Sterling**

WHITE | WINDHAM



1



2



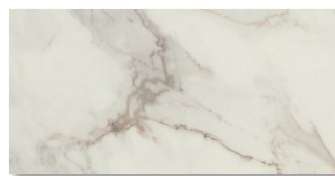
3



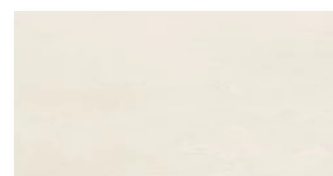
4



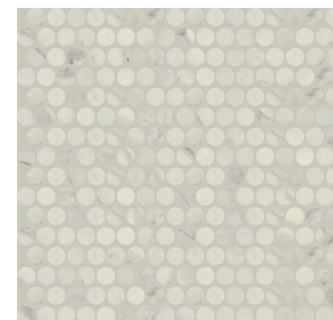
5



6



7



8



9



10





# Designer Appointed Features | SECONDARY BATHROOM

Designer Appointed Features are home details and finishes curated by the talented design professionals responsible for the distinctive looks found in our model homes.

## 1 VANITY CABINETS

**Diamond**  
MOREL | GRADON

## 2 HARDWARE

**Jeffrey Alexander**  
625-128MB

## 3 COUNTERTOP

**Hi-Macs**  
NORDIC WHITE

## 4 FAUCET

**Kohler**  
MATTE BLACK | SINGLE HANDLE HINT/PITCH

## 5 SINK

**Kohler**  
OVAL UNDERMOUNT

## 6 SHOWER TILE—WALLS

**Daltile**  
TRANCE | 3 X 12 MESMERIST GLOSSY-  
HERRINGBONE

## 7 SHOWER TILE—FLOOR

**Marazzi**  
OFF WHITE | 12 X 24 MOROCCAN CONCRETE

## 8 SHOWER FIXTURES

**Kohler**  
MATTE BLACK | HINT/PITCH

## 9 TOILET

**Sterling**  
WHITE | WINDHAM



1



2



3



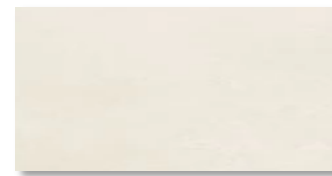
4



5



6



7



8



9

10