

Toll Brothers
AMERICA'S LUXURY HOME BUILDER®



COLDWATER RIDGE OF NORTHVILLE



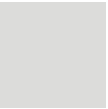

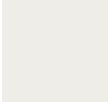

Horton Elite Aberdeen

HOME SITE 56 | 49695 STILL WATER LN | NORTHVILLE, MI 48168

Designer Appointed Features | EXTERIOR SELECTIONS

Designer Appointed Features are home details and finishes curated by the talented design professionals responsible for the distinctive looks found in our model homes.



- | | | | | | | | | |
|---|---|---|---|---|-----------------------------|---|--|---|
| 1 |  | BRICK
Maverick Grey
Glen-Gery | 3 |  | FRONT DOOR
Black | 5 |  | TRIM
Arctic White
James Hardie |
| 2 |  | SIDING
Pearl Gray
James Hardie | 4 |  | GARAGE DOOR
White | 6 |  | ROOF
Pewter Gray
GAF |

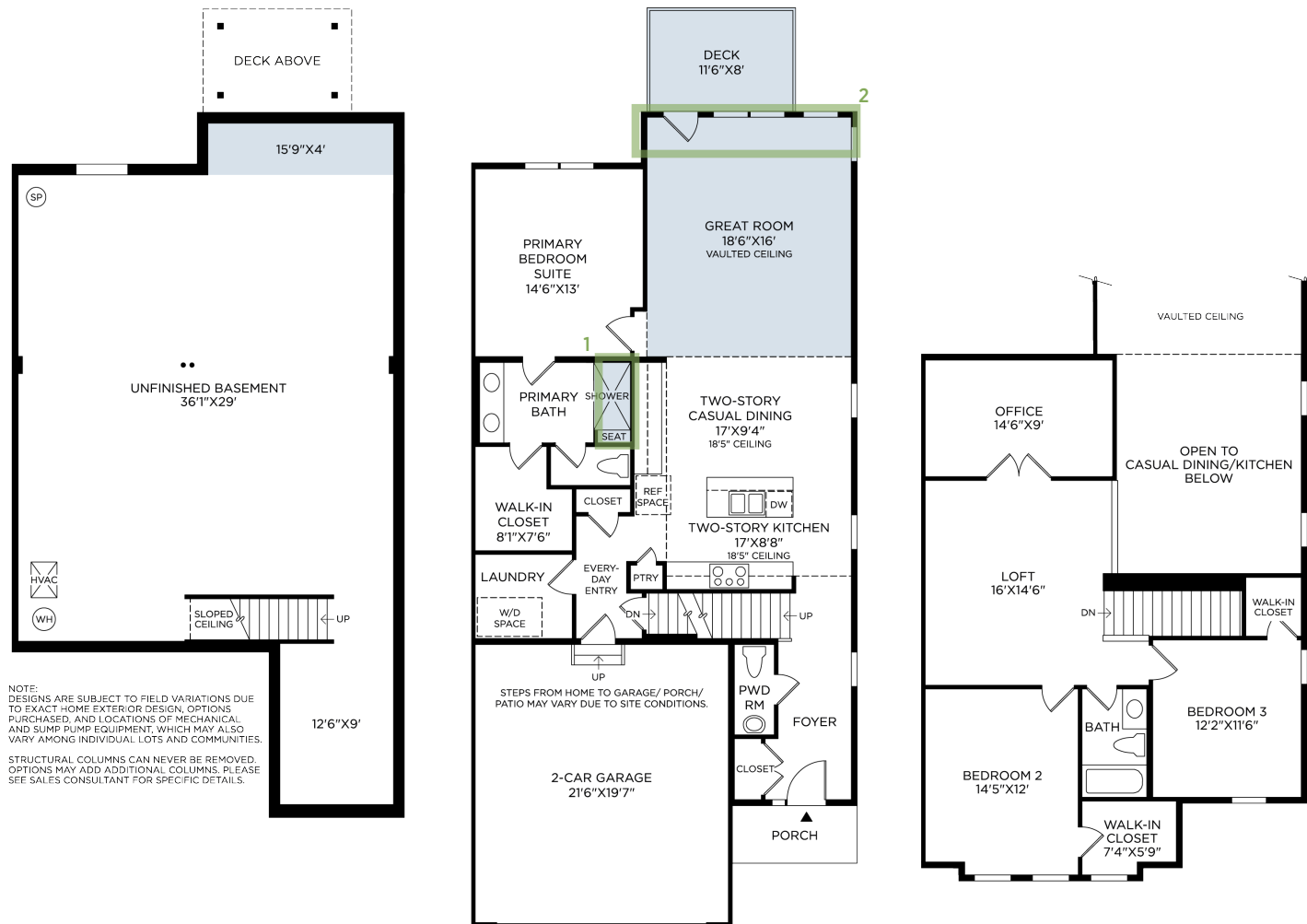
**COLDWATER RIDGE OF NORTHVILLE | HORTON ELITE ABERDEEN
HOME SITE 56 | 49695 STILL WATER LN | NORTHVILLE, MI 48168**

Photographs, renderings, and floor plans are for representational purposes only and may not reflect the exact features or dimensions of your home; actual product may differ. All dimensions are subject to field variations. Prices and offers subject to change without notice. This is not an offering where prohibited by law. Not all images may be shown. See online or onsite Sales Consultants for details.



Designer Appointed Features | ARCHITECTURAL SELECTIONS

Designer Appointed Features are home details and finishes curated by the talented design professionals responsible for the distinctive looks found in our model homes.



1 ALTERNATE PRIMARY SHOWER

2 EXTENDED GREAT ROOM DEPTH 4'