



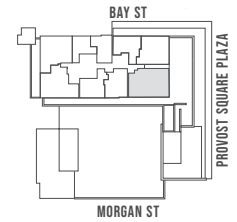
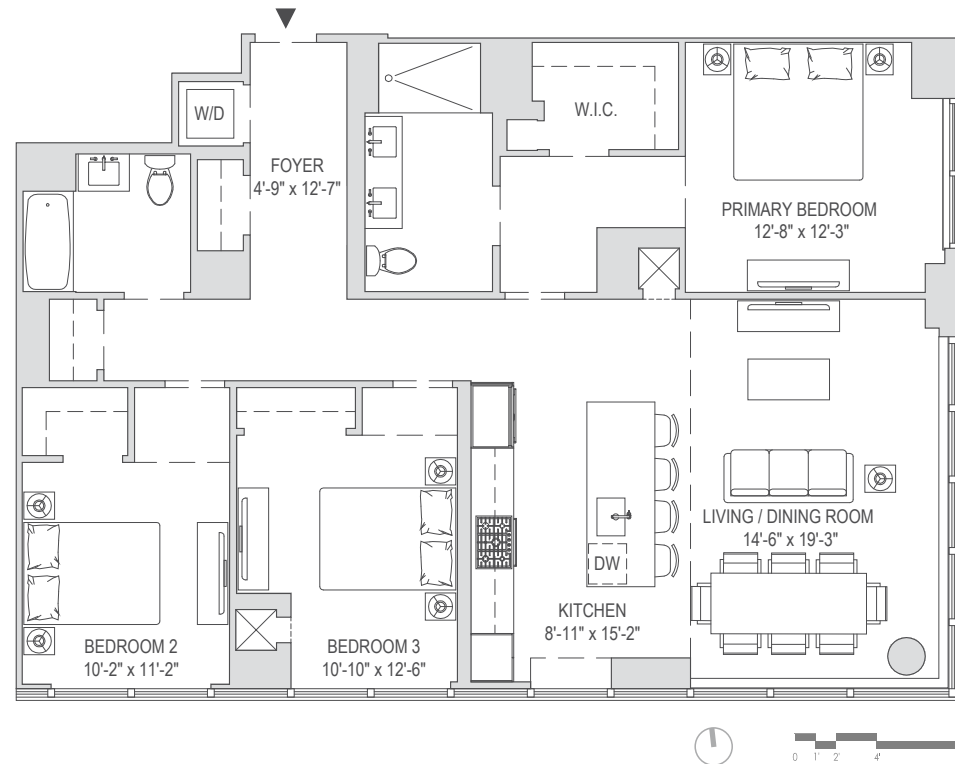
AT PROVOST SQUARE

RESIDENCES 1004-2304

3 BEDROOMS

2 BATHROOMS

1,446 SF



Toll Brothers
CITY LIVING

SALES GALLERY: 10 PROVOST STREET | JERSEY CITY, NJ 07302 | 201.350.5944 | 151BAY.COM

All dimensions, including square footage numbers, are approximate, shown to the maximum dimensions of each room, and subject to field variation. These approximate dimensions should not be used to calculate square footage, nor should they be relied on for anything other than illustrative purposes. The sponsor reserves the right to modify or change floor plans, materials, and features without prior notice or obligation, in accordance with the terms of the Public Offering Statement.

