

THE ADLEY

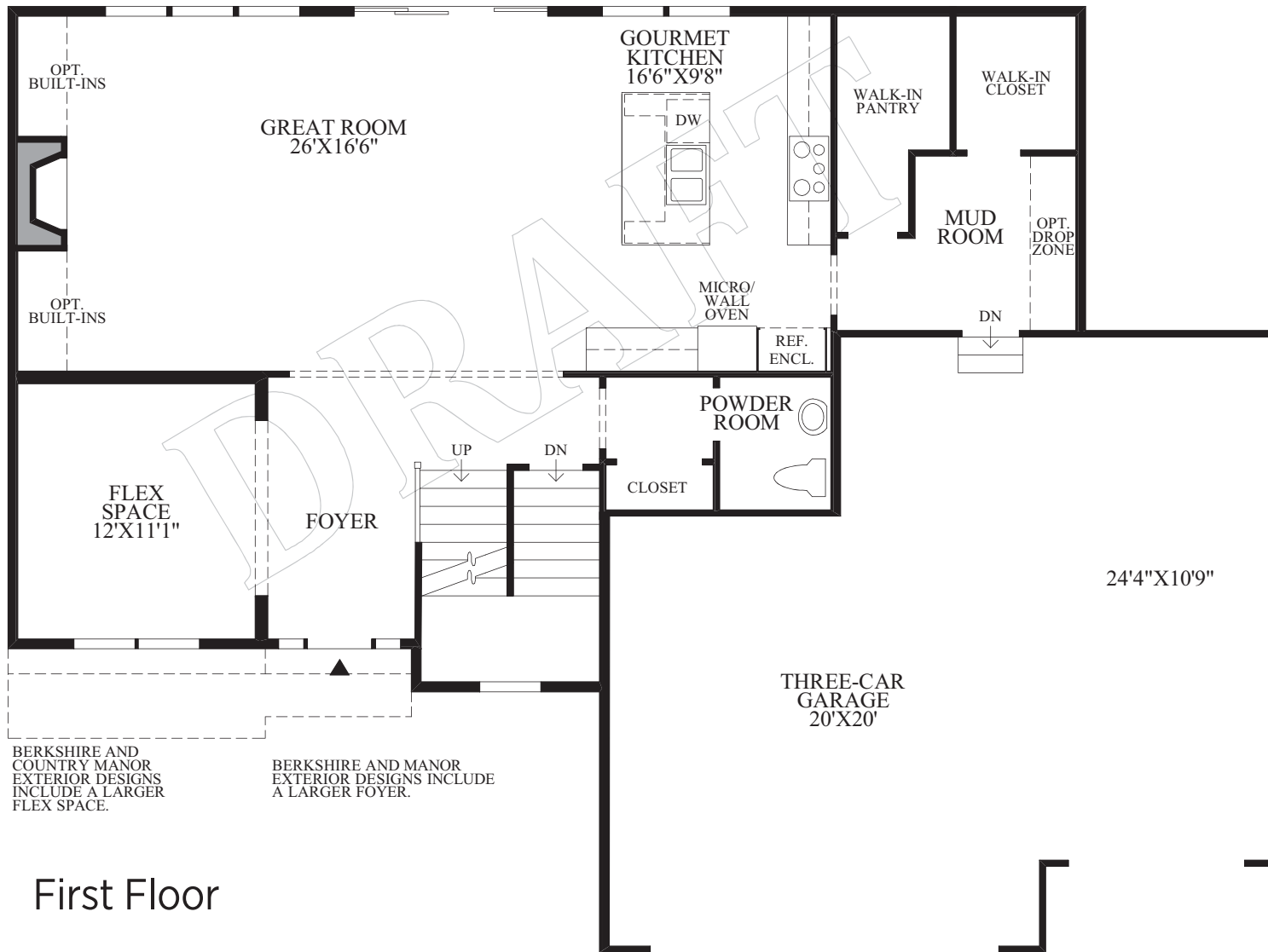
DRAFT

THE ADLEY | Home Designs



THE ADLEY | Floor Plan

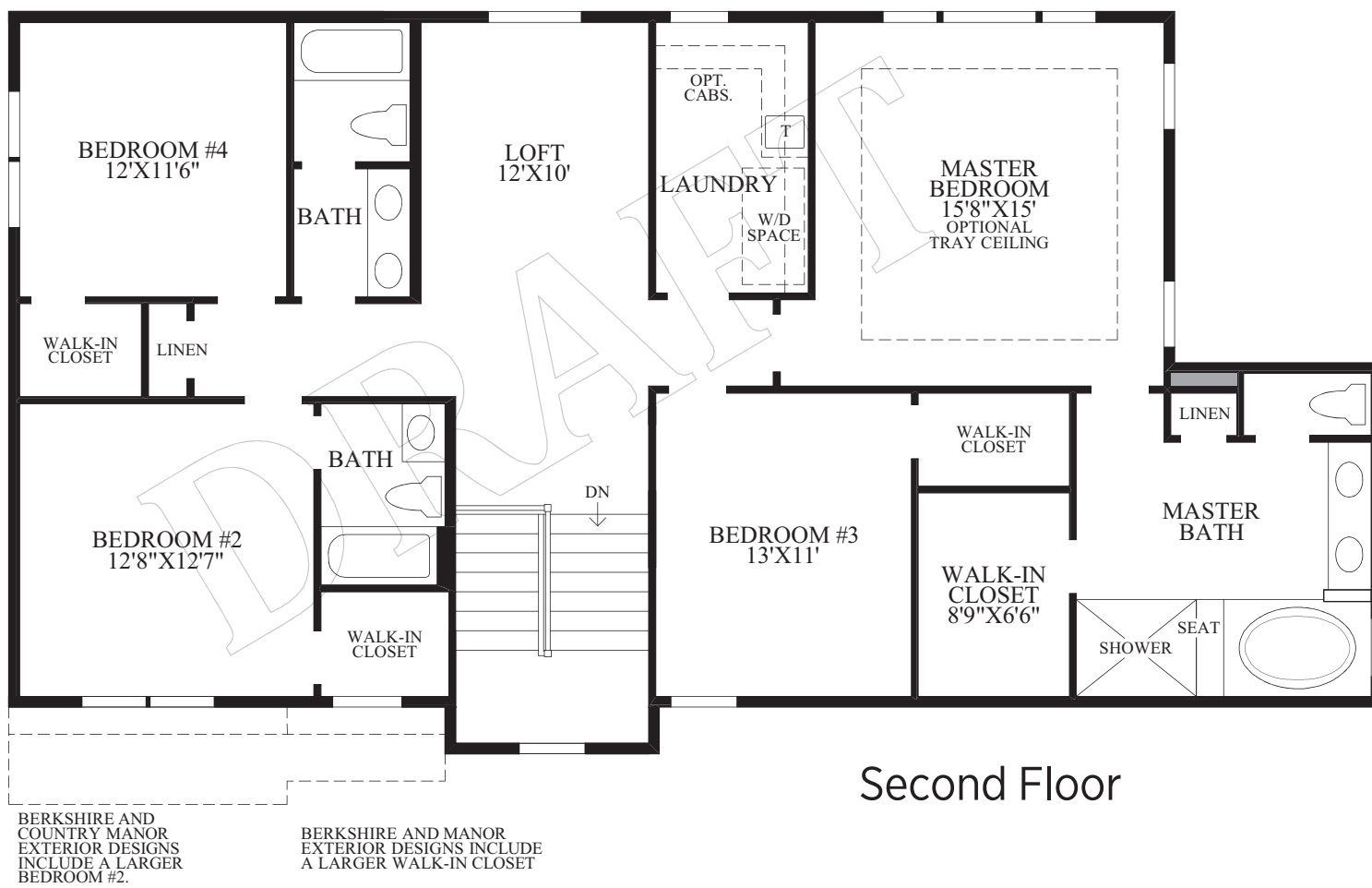
4 Bedrooms | 3 ½ Baths | 3-Car Garage



First Floor

THE ADLEY HIGHLIGHTS

- The foyer opens to the elegant turned stairs and has an open view of the great room beyond.
- The gourmet kitchen features a large center island, a walk-in pantry and opens to the spacious great room with a fireplace.
- The spacious master bedroom is highlighted by a large walk-in closet and a master bath with a Roman tub, dual-sink vanity, a separate shower with a seat, and a private toilet area.
- The second floor of this home includes three additional bedrooms, two baths, and a loft.
- Additional highlights include a mud room with a walk-in closet, a powder room, a flex space and a convenient second floor laundry.
- Nine-foot ceilings throughout the first and second floors.



Second Floor

Photographs, renderings, and floor plans are for representational purposes only and may not reflect the exact features or dimensions of your home. All dimensions are subject to field variations. Some design features and options shown may not be offered in your community. All options to be included in your home must be specified in an Exhibit B to the Agreement of Sale. All Toll Brothers floor plans and designs are copyrighted. All rights reserved and strictly enforced. This is not an offering where prohibited by law. Please consult our sales representative for details.

(NE-RAMD/141669) 112216 ©TB PROPRIETARY CORP. (ADLEY)