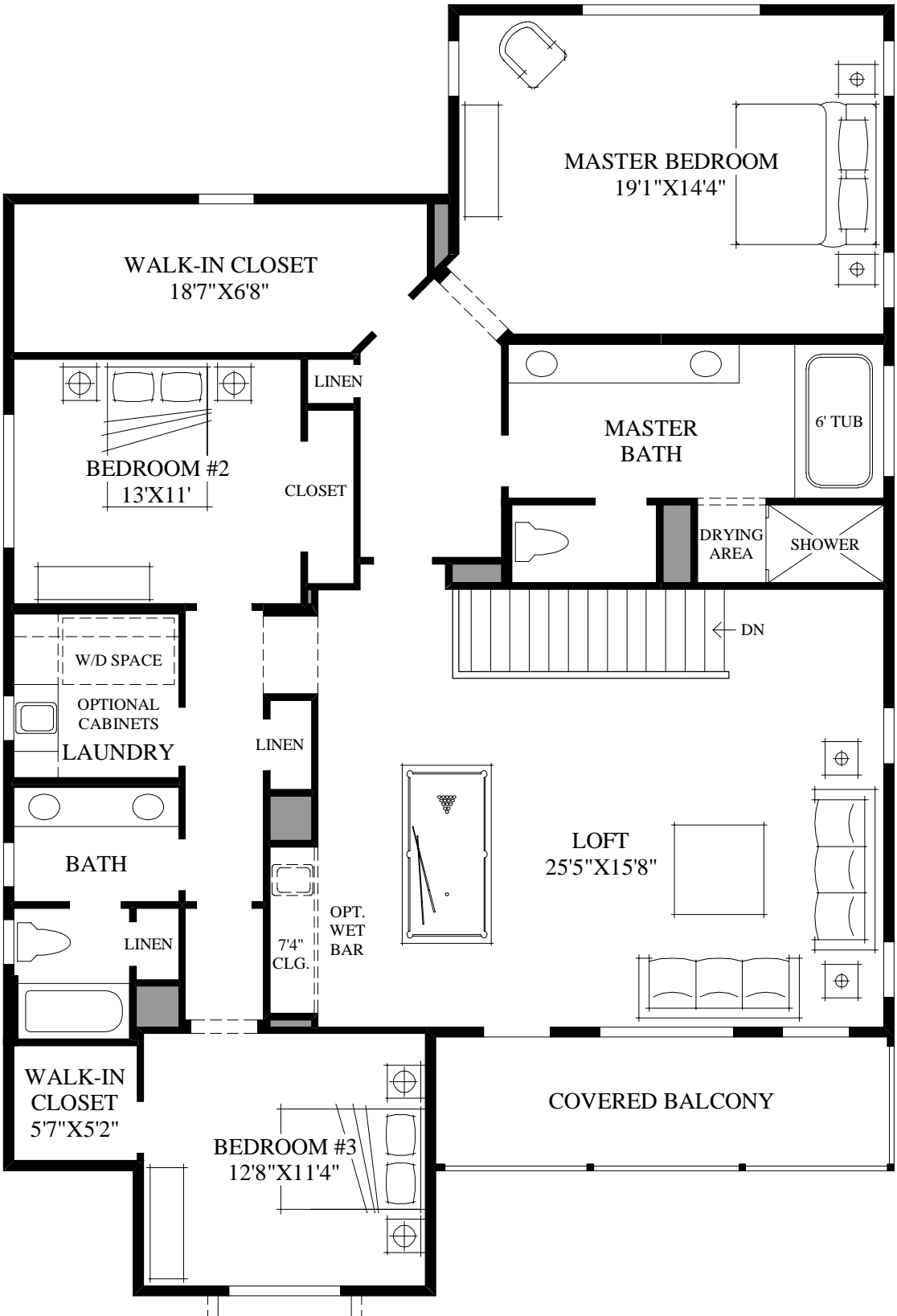


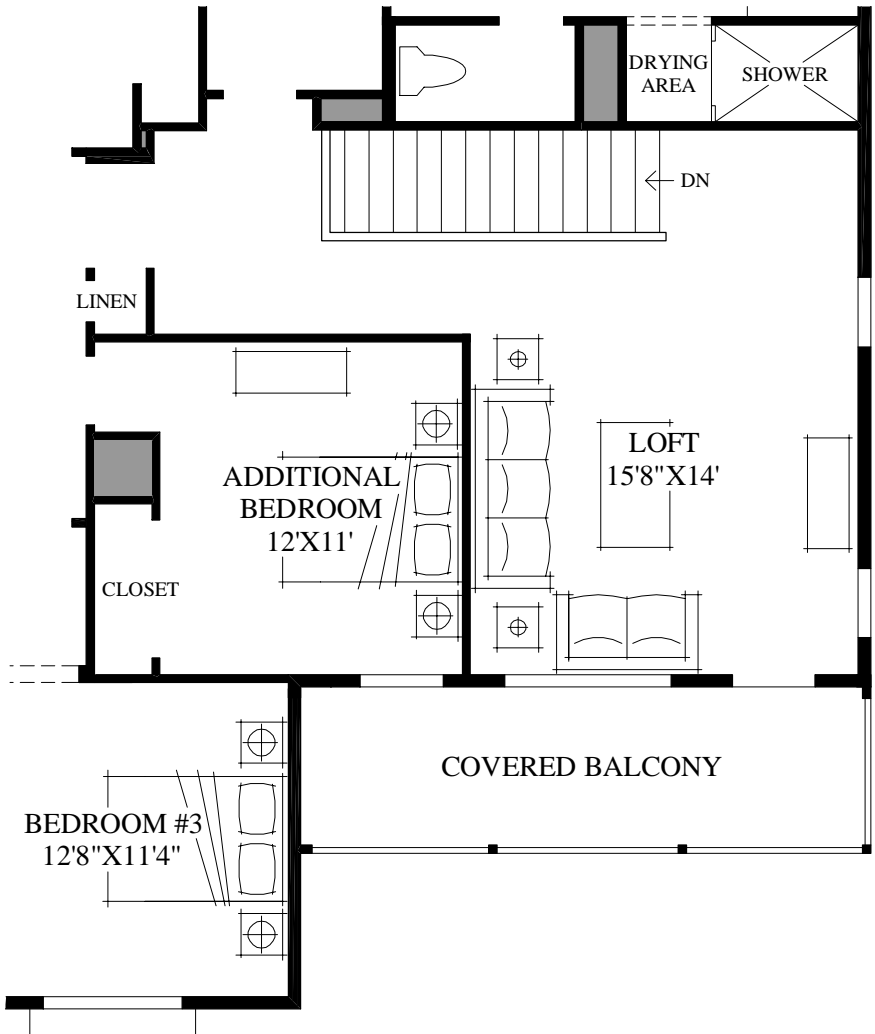
CRAFTSMAN EXTERIOR DESIGN  
INCLUDES LARGER COVERED ENTRY.

First Floor  
SHINGLE EXTERIOR DESIGN SHOWN



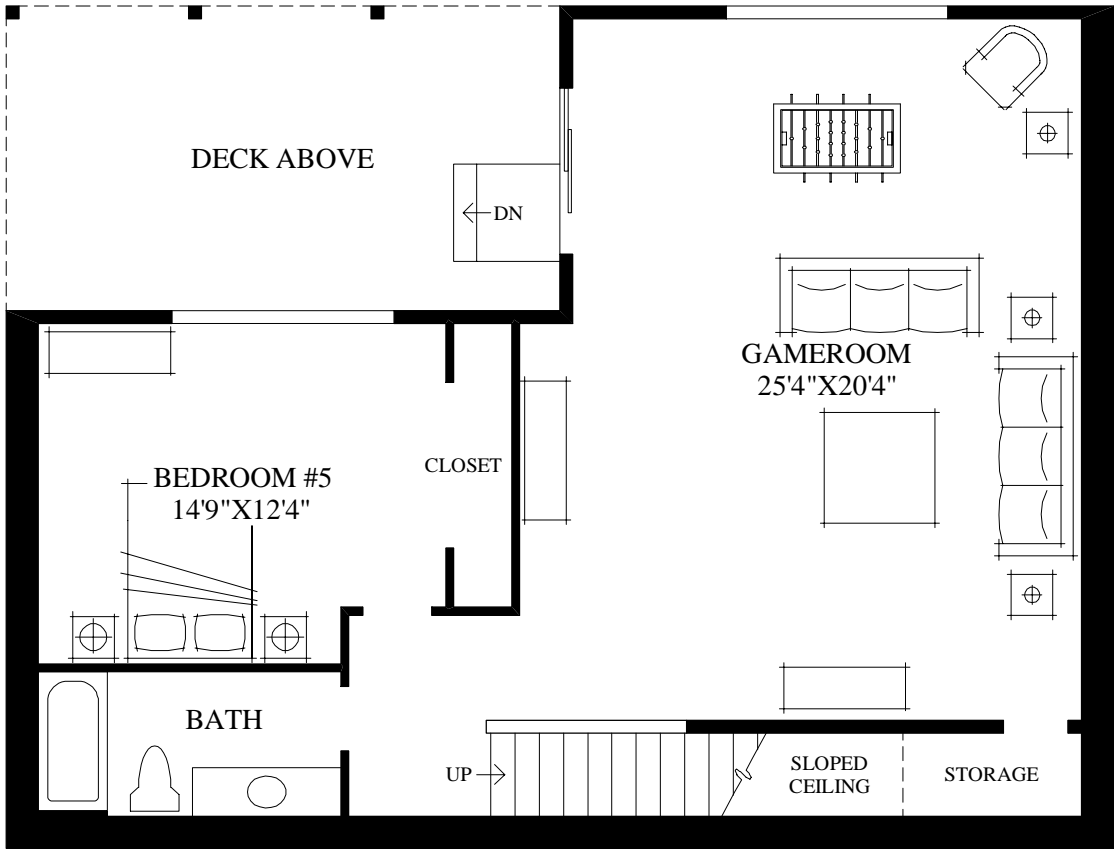
CRAFTSMAN EXTERIOR DESIGN  
INCLUDES LARGER BEDROOM #3.

Second Floor



SHOWN WITH OPTIONAL  
ADDITIONAL BEDROOM

NUMBER OF STEPS FROM HOME TO GARAGE/ PORCH/  
PATIO MAY VARY DUE TO SITE CONDITIONS.



Basement

THE BALLARD WITH BASEMENT HIGHLIGHTS

- A desirable covered entry opens to the welcoming foyer which leads to a stylish open-plan layout.
- This alluring great room boasts a picturesque fireplace and scenic views to the generous rear deck.
- An elongated center island with a breakfast bar, a convenient pantry, and an adjoining dining room help to create the stunning kitchen.
- The marvelous master bedroom is truly something to appreciate with its oversized walk-in closet and fantastic master bath which features a dual-sink vanity, a large soaking tub, and a separate shower.
- Great for multi-generation entertaining, the marvelous loft offers a vast amount of space as well as access to an alluring front covered balcony.
- Large secondary bedrooms, a well-placed laundry, a versatile first-floor bedroom, and a well-designed basement are also included.