



THE BARBADOS | Exterior Designs



Coastal

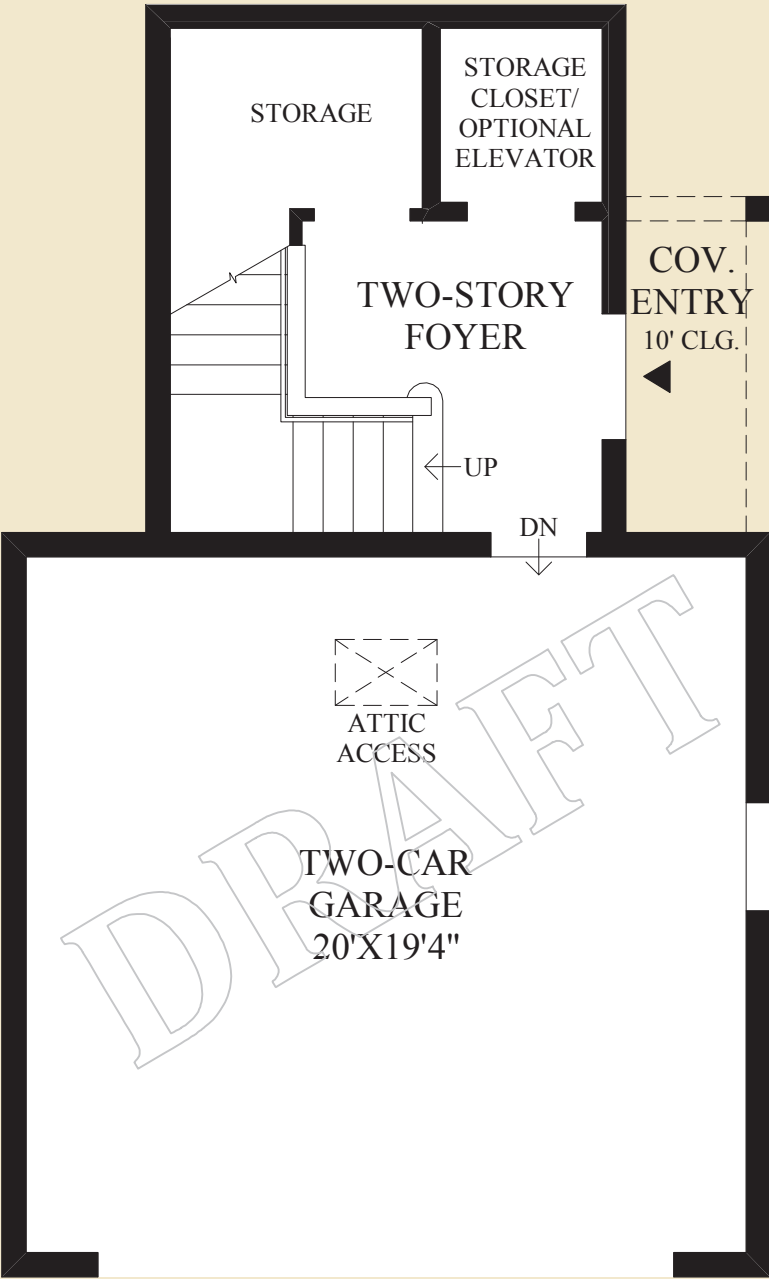


Toll Brothers
AMERICA'S LUXURY HOME BUILDER

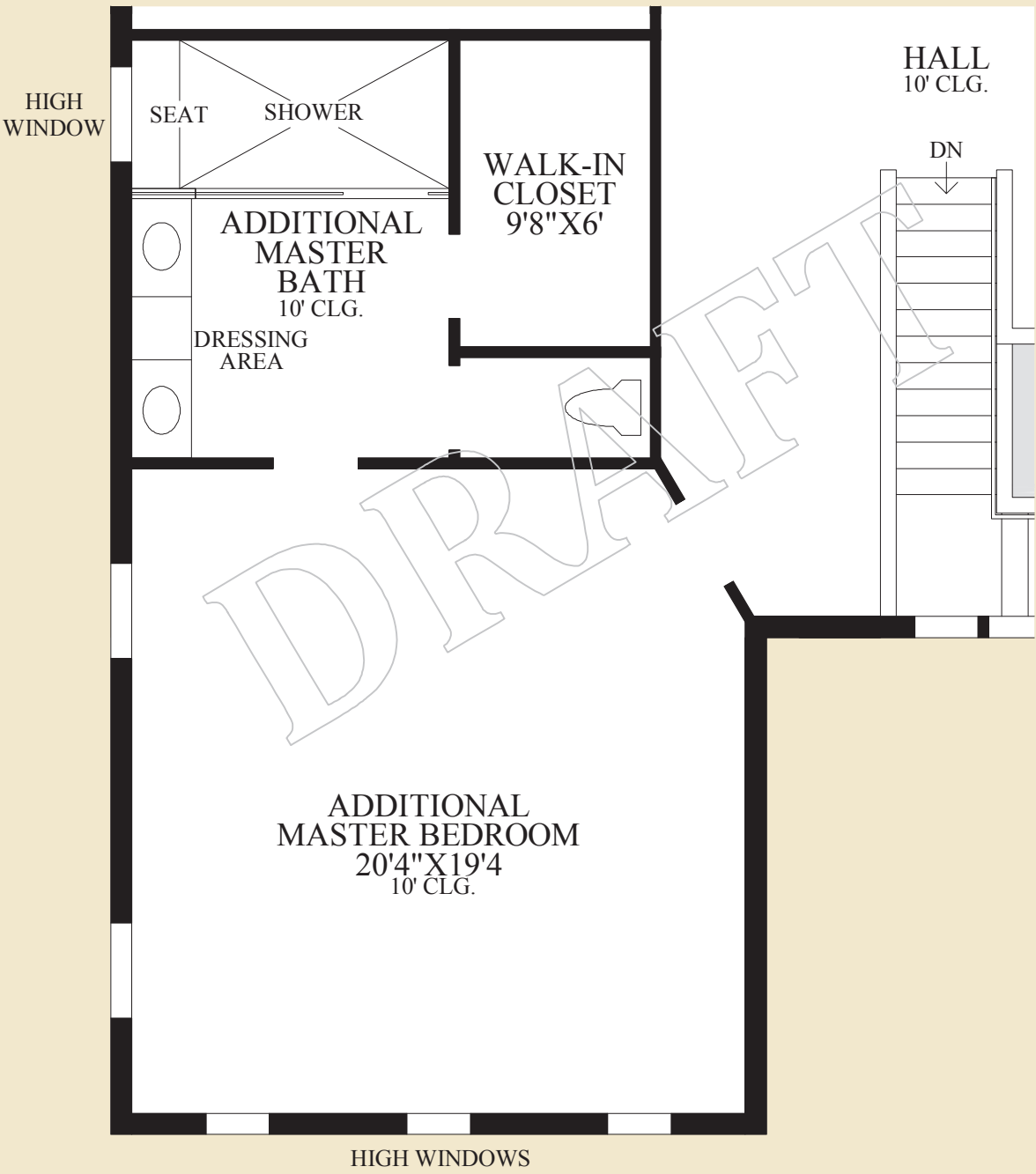
DRAFT



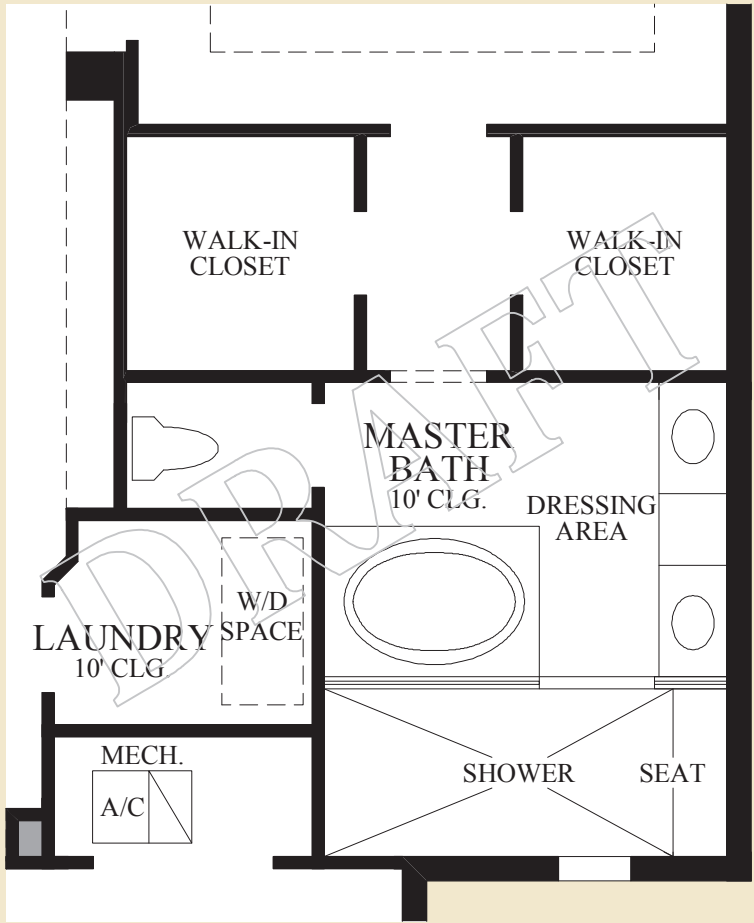
Living Level



Entry Level

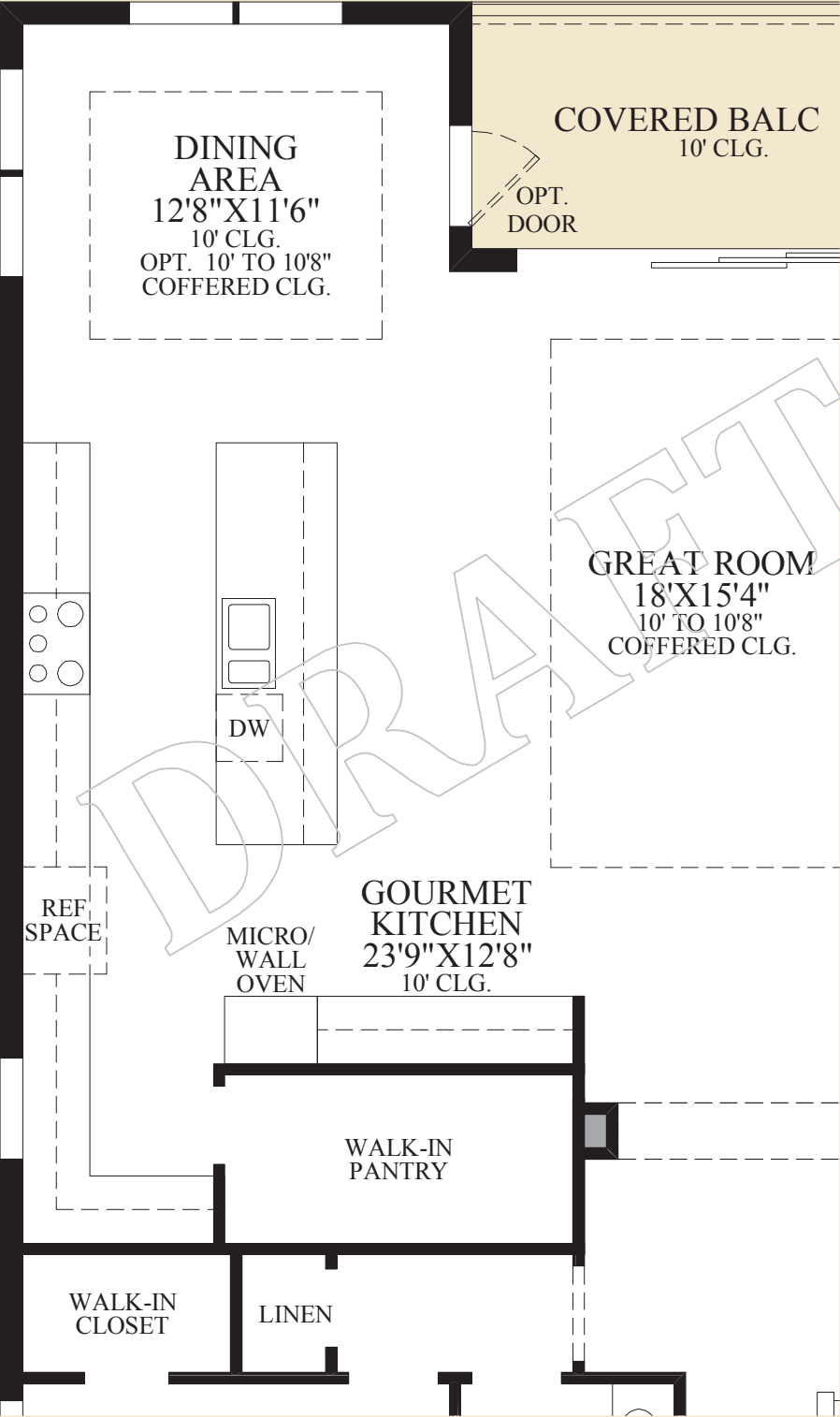


SHOWN WITH OPTIONAL ADDITIONAL MASTER SUITE IN LIEU OF STANDARD BEDROOM(S)



SHOWN WITH OPTIONAL LUXURY ALTERNATE MASTER BATH

NOTE: OPTION 029 BEDROOM IN LIEU OF STUDY CANNOT BE PURCHASED IN CONJUNCTION WITH THIS OPTION.



SHOWN WITH OPTIONAL ALTERNATE KITCHEN LAYOUT

THE BARBADOS HIGHLIGHTS

- A covered entry leads to a two-story foyer with a spacious storage closet.
- The living area is conducive to entertaining with its large great room, open layout, and direct access to the covered lanai.
- The kitchen offers an island and adjacent sunlit dining area.
- The master bedroom includes two walk-in closets and a private bath with a large shower, dual-sink vanity, and a private water closet.

Air Conditioned Living Area	2611 sq. ft.
Covered Balcony	116 sq. ft.
Covered Entry	37 sq. ft.