



Berkshire

THE BETHEL

THE BETHEL | Exterior Designs



Bethel/Pentwater/Avon/Bristol



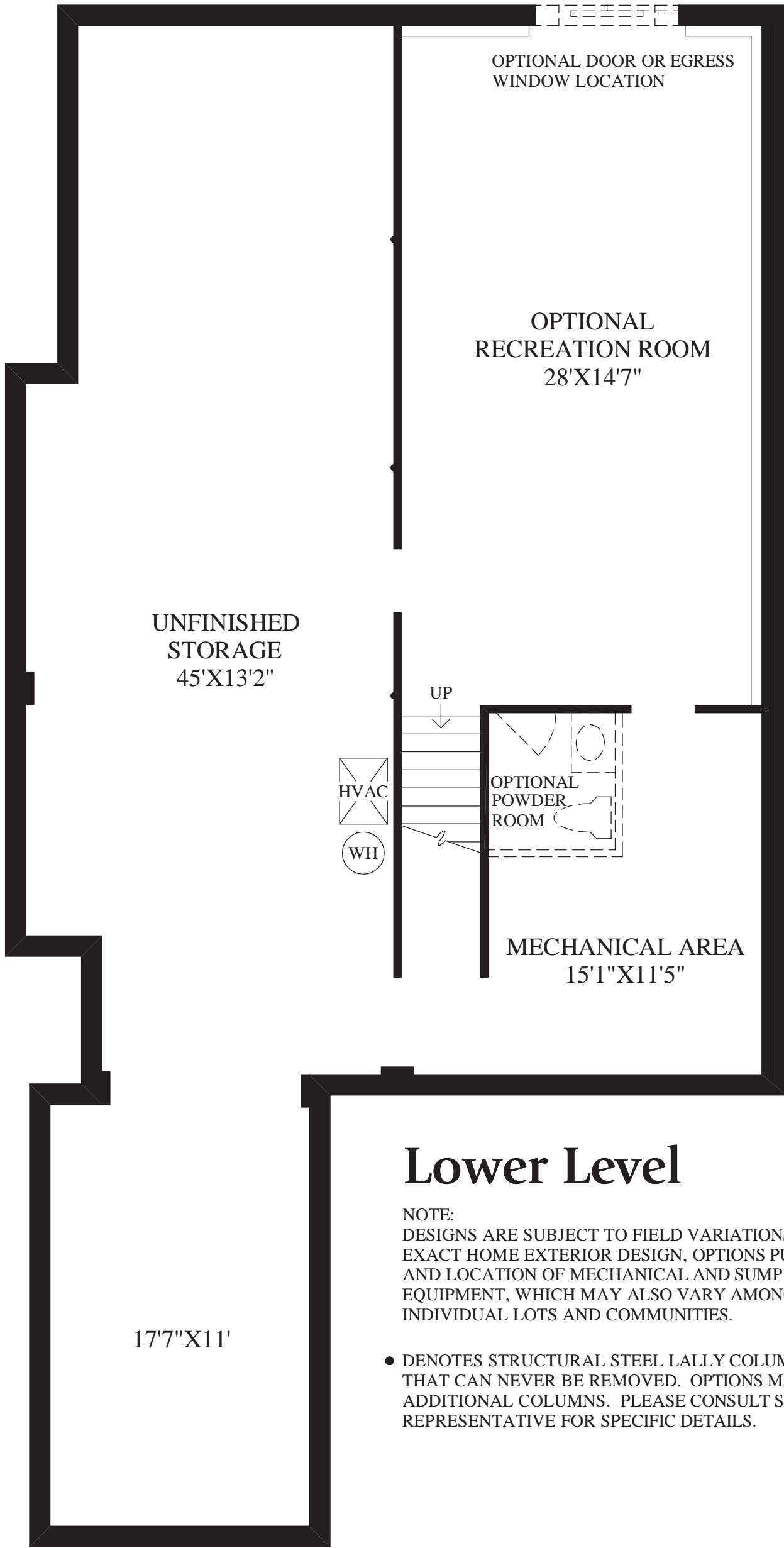
Master Bedroom

THE BETHEL | Interior

Toll Brothers
America's Luxury Home Builder®



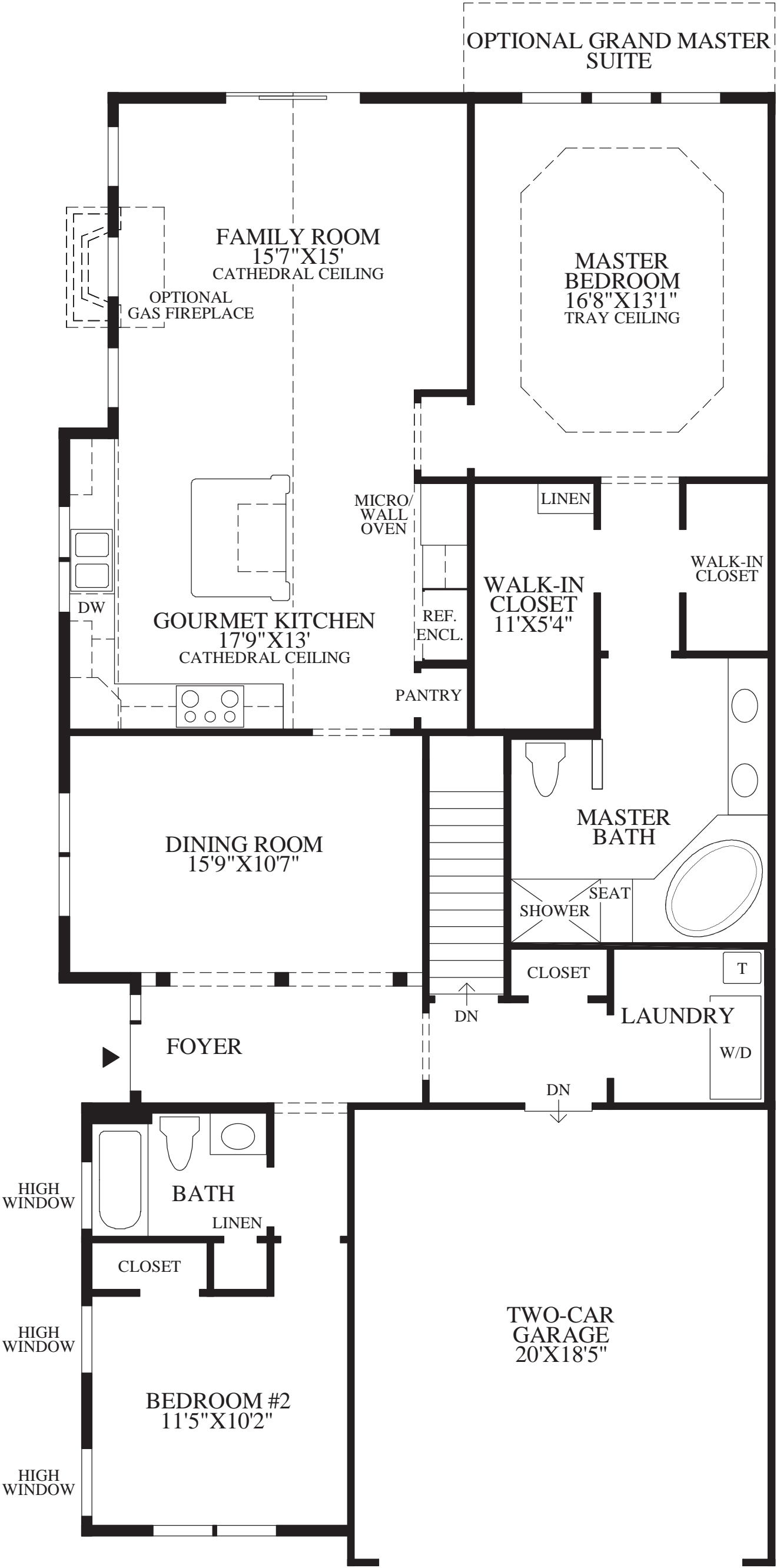
This hotel was produced
using recycled products.



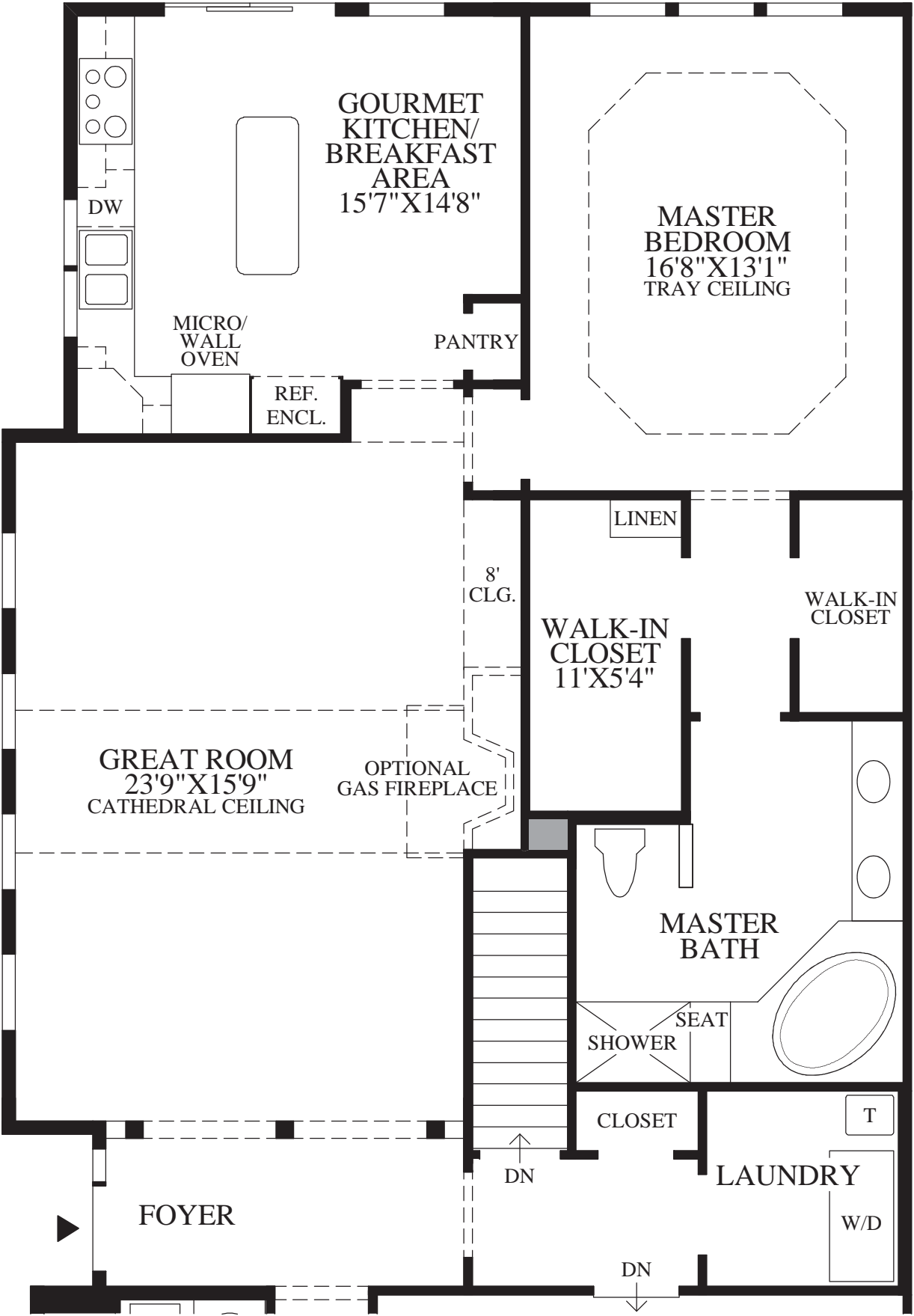
Lower Level

NOTE:
DESIGNS ARE SUBJECT TO FIELD VARIATIONS DUE TO EXACT HOME EXTERIOR DESIGN, OPTIONS PURCHASED, AND LOCATION OF MECHANICAL AND SUMP PUMP EQUIPMENT, WHICH MAY ALSO VARY AMONG INDIVIDUAL LOTS AND COMMUNITIES.

● DENOTES STRUCTURAL STEEL LALLY COLUMNS THAT CAN NEVER BE REMOVED. OPTIONS MAY ADD ADDITIONAL COLUMNS. PLEASE CONSULT SALES REPRESENTATIVE FOR SPECIFIC DETAILS.



Floor Plan



SHOWN WITH OPTIONAL ALTERNATE KITCHEN LAYOUT

THE BETHEL HIGHLIGHTS

- The Bethel features a columned foyer opening to the dining room.
- The well-designed kitchen, adjacent to the spacious family room, is highlighted by a center island and pantry.
- The master bedroom includes a tray ceiling, dual walk-in closets, and a private bath with a dual-sink vanity, a Roman tub, and a separate shower with a seat.
- This home features nine-foot ceilings throughout.

