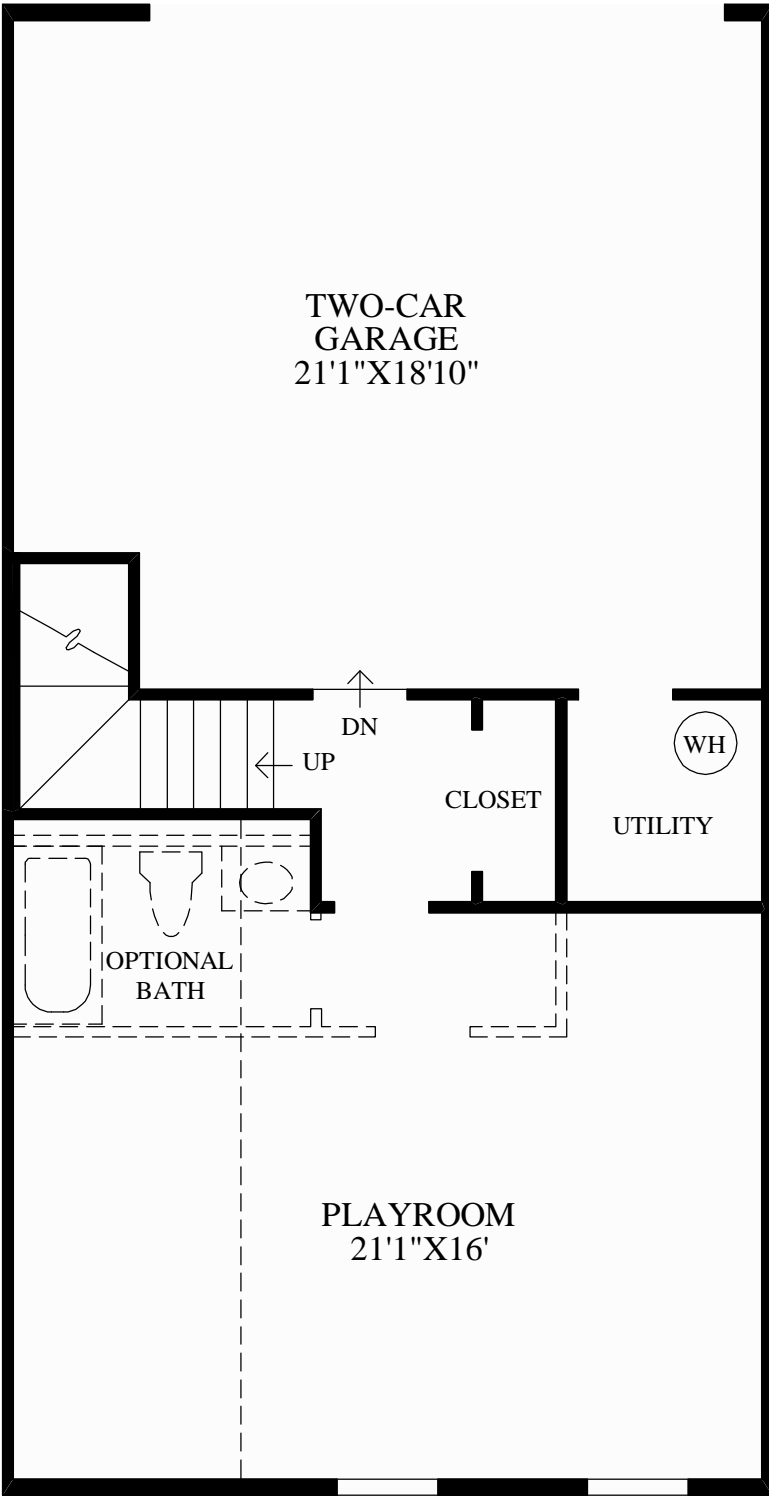
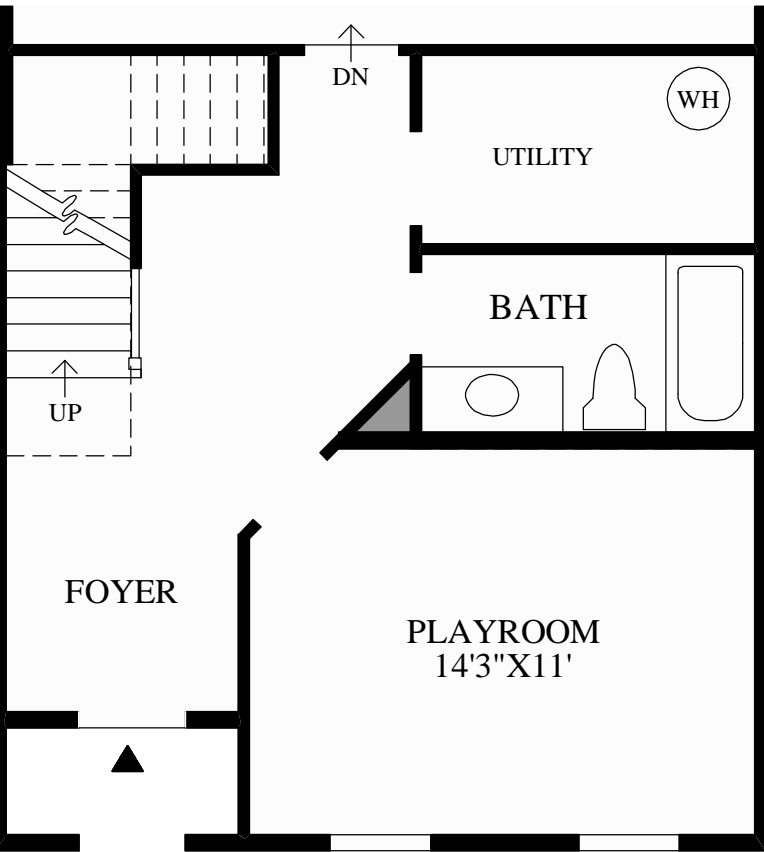


CLASSIC AND COUNTRY MANOR EXTERIOR DESIGNS SHOWN.



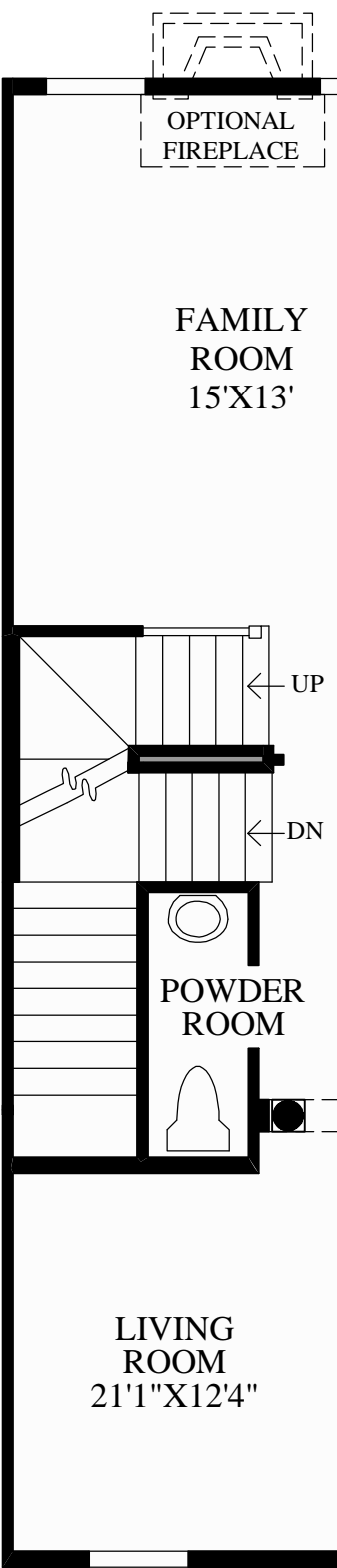
GEORGIAN AND TRADITIONAL EXTERIOR DESIGNS SHOWN.

Lower Level



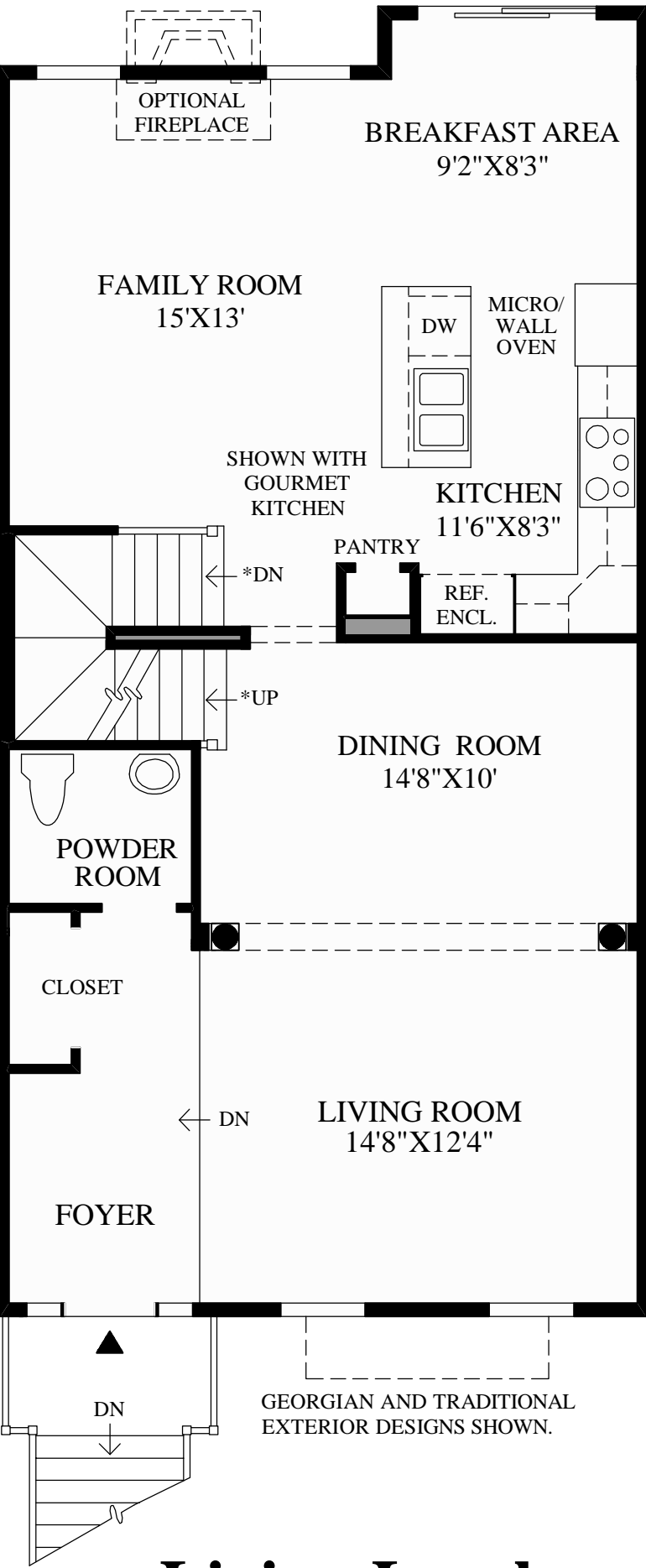
CLASSIC AND COUNTRY MANOR EXTERIOR DESIGNS SHOWN.

SHOWN WITH OPTIONAL  
ADDITIONAL BATH



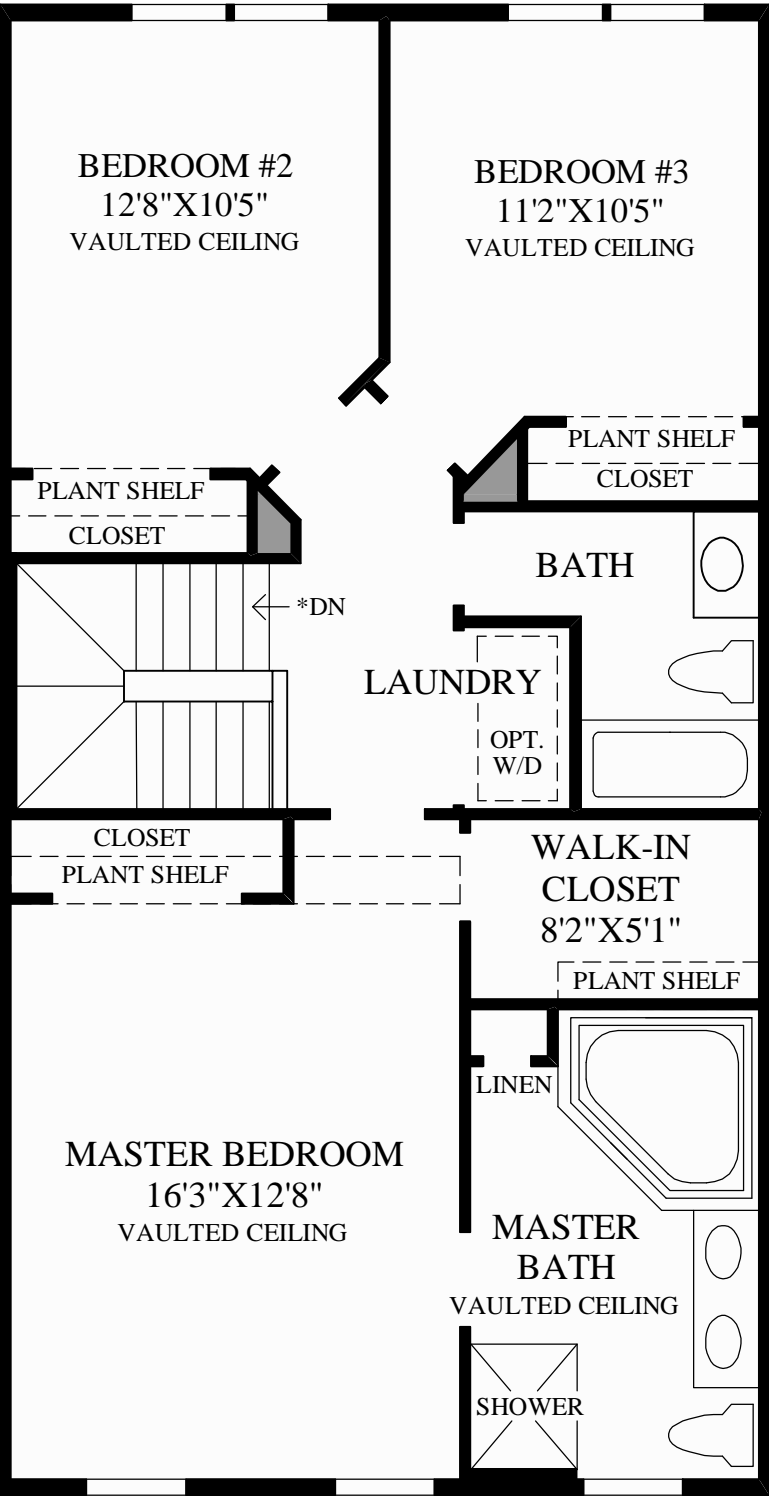
CLASSIC AND COUNTRY MANOR EXTERIOR DESIGNS SHOWN.

\*NOTE:  
DIRECTION OF STAIR WILL CHANGE  
WITH FRONT ENTRY GARAGE.



GEORGIAN AND TRADITIONAL EXTERIOR DESIGNS SHOWN.

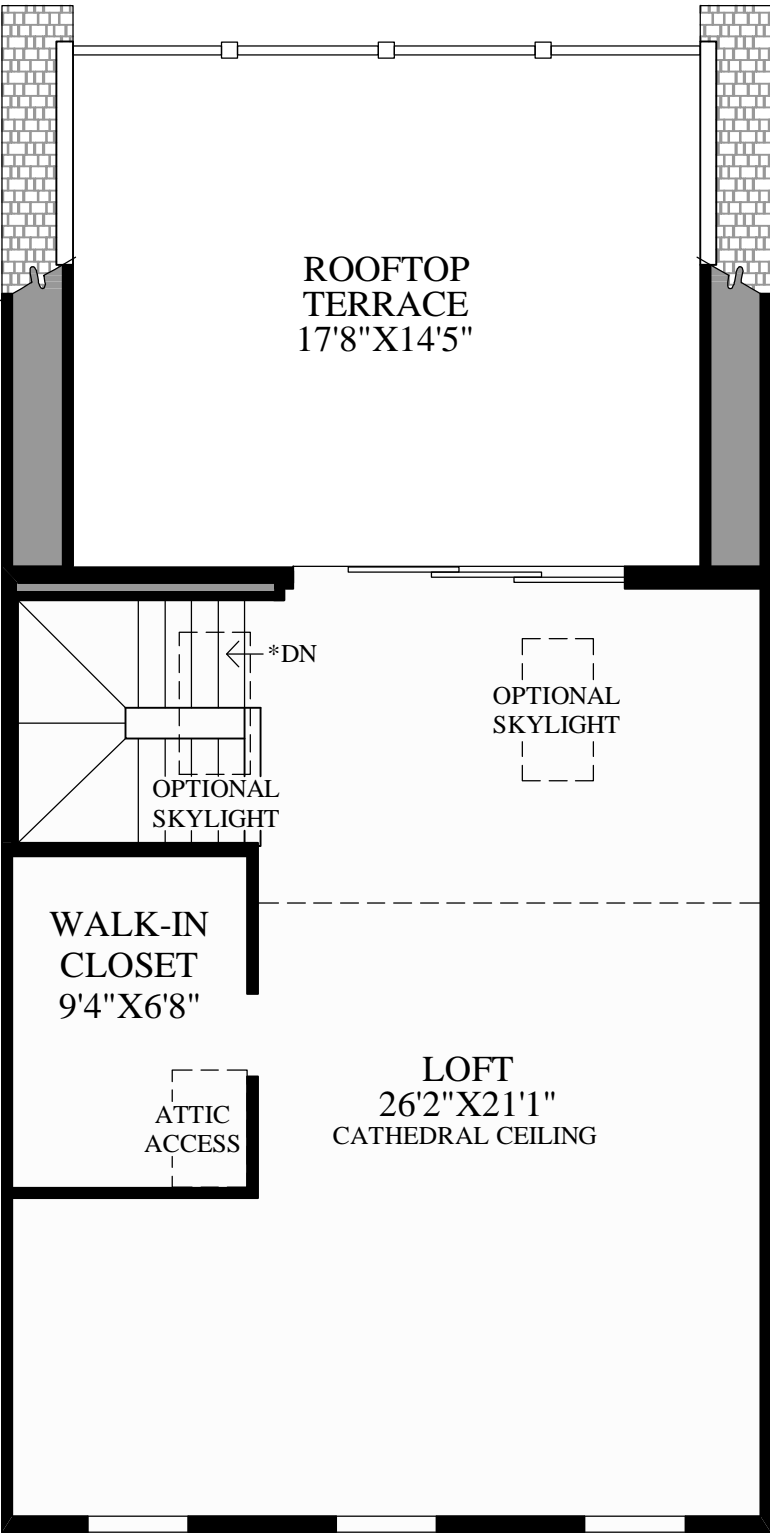
Living Level



GEORGIAN AND TRADITIONAL EXTERIOR DESIGNS SHOWN.

\*NOTE: DIRECTION OF STAIR WILL CHANGE  
WITH FRONT ENTRY GARAGE.

Bedroom Level



WALL HEIGHT  
APPROX. 5'

SHOWN WITH OPTIONAL  
ROOFTOP TERRACE

NOTE:  
PLANT SHELVES AND VAULTED CEILINGS ARE  
ELIMINATED WITH PURCHASE OF LOFT OPTION.

THE BETHESDA HIGHLIGHTS

- The expansive entertaining area includes a formal living room and a dining room divided by stately columns.
- The intimate family area includes the kitchen with breakfast area and spacious family room.
- The master bedroom suite includes a large walk-in closet and generous master bath with a separate shower and a Roman tub.
- The laundry is conveniently located on the second floor.
- Nine-foot ceilings in the lower level and living level, and vaulted ceilings in the bedroom level bedrooms.



Living Room