



Craftsman

THE BIGELOW

DRAFT

**Toll Brothers**  
AMERICA'S LUXURY HOME BUILDER®

THE BIGELOW | Exterior Designs

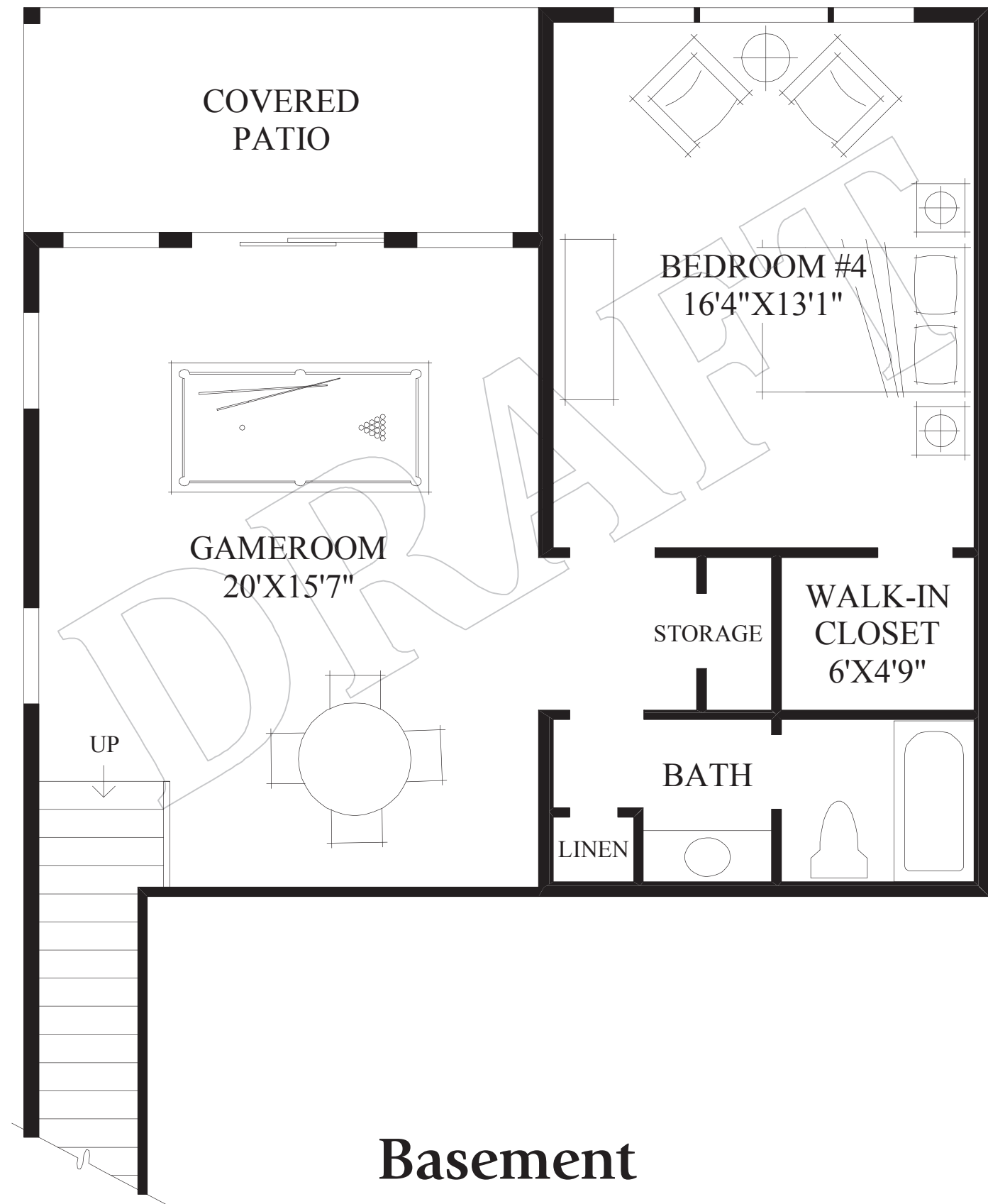
DRAFT



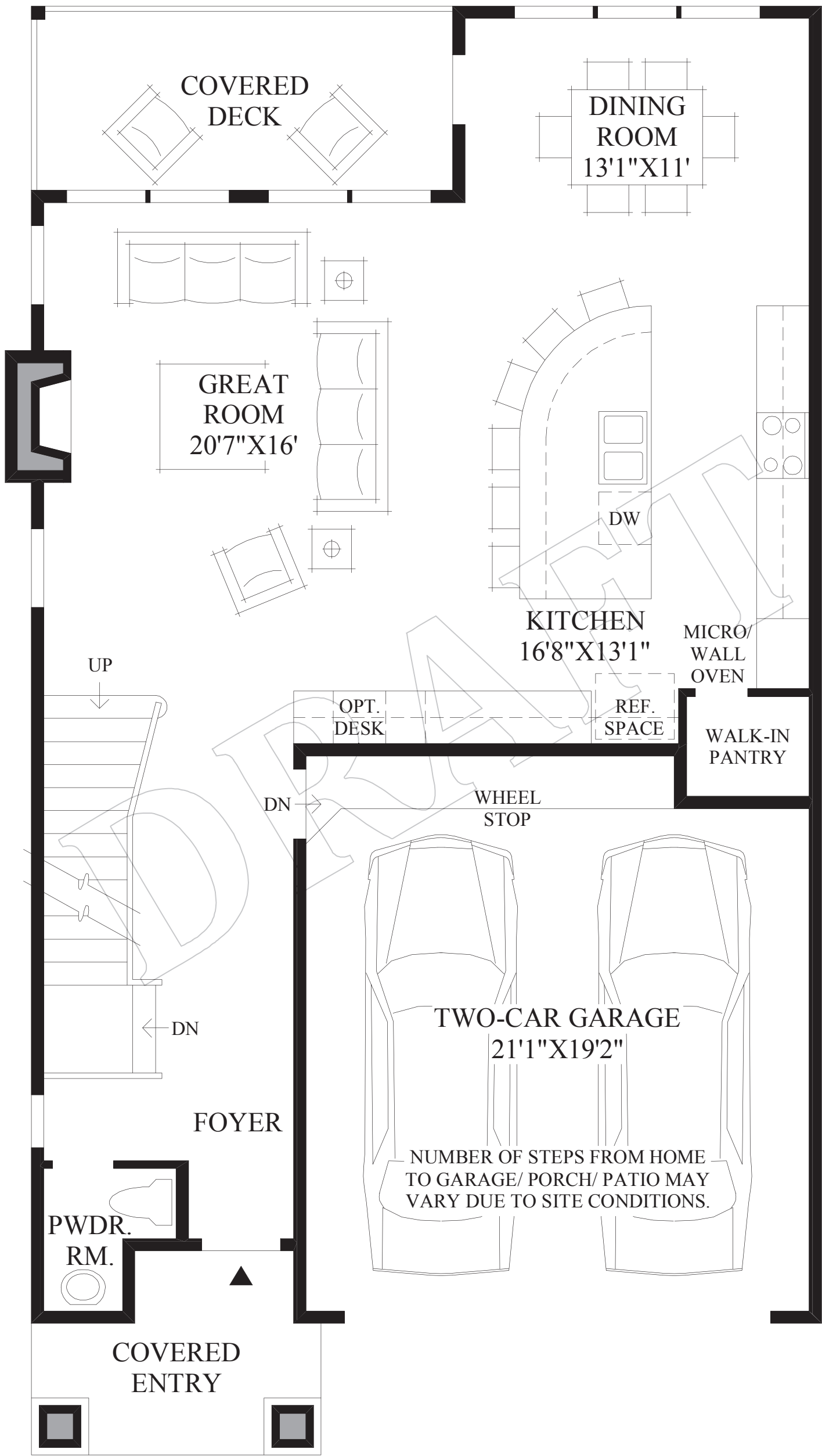
Shingle

**Toll Brothers**  
AMERICA'S LUXURY HOME BUILDER®

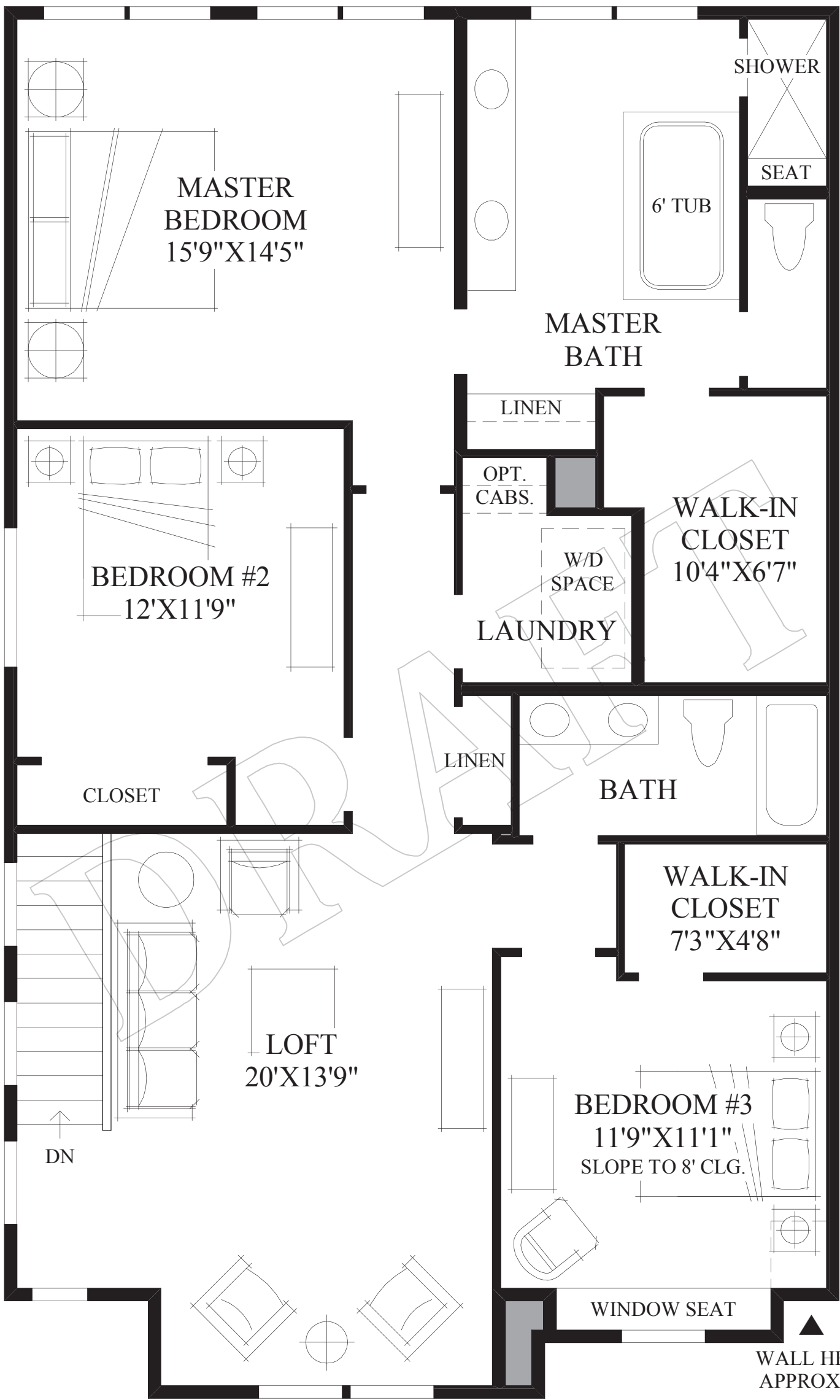




Basement



First Floor  
CRAFTSMAN EXTERIOR DESIGN SHOWN



Second Floor

THE BIGELOW HIGHLIGHTS

- A welcoming covered entry leads to an inviting foyer that showcases a beautiful staircase.
- The spacious great room flaunts an eye-catching fireplace and large windows which allow for an abundance of natural light to fill the room.
- This open-concept floor plan continues through to the kitchen which includes a marvelous center island and an adjacent sunlit dining room that provides access to the covered deck.
- Completing the remarkable master bedroom are large windows, a walk-in closet, and a luxurious master bath that includes a dual-sink vanity, a large soaking tub, a separate glass-enclosed shower, and a private water closet.
- This outstanding basement includes an enormous gameroom, a full bath, access to the covered patio, and an additional bedroom that is complete with a walk-in closet.
- Additional highlights to this superb home include two secondary bedrooms, a conveniently located laundry room, and a desirable second-floor loft.