



Country Manor

THE BINGHAMTON

THE BINGHAMTON | Exterior Designs



Federal

May be shown with optional features, including but not limited to brick front porch.

Toll Brothers
ACTIVE LIVING®



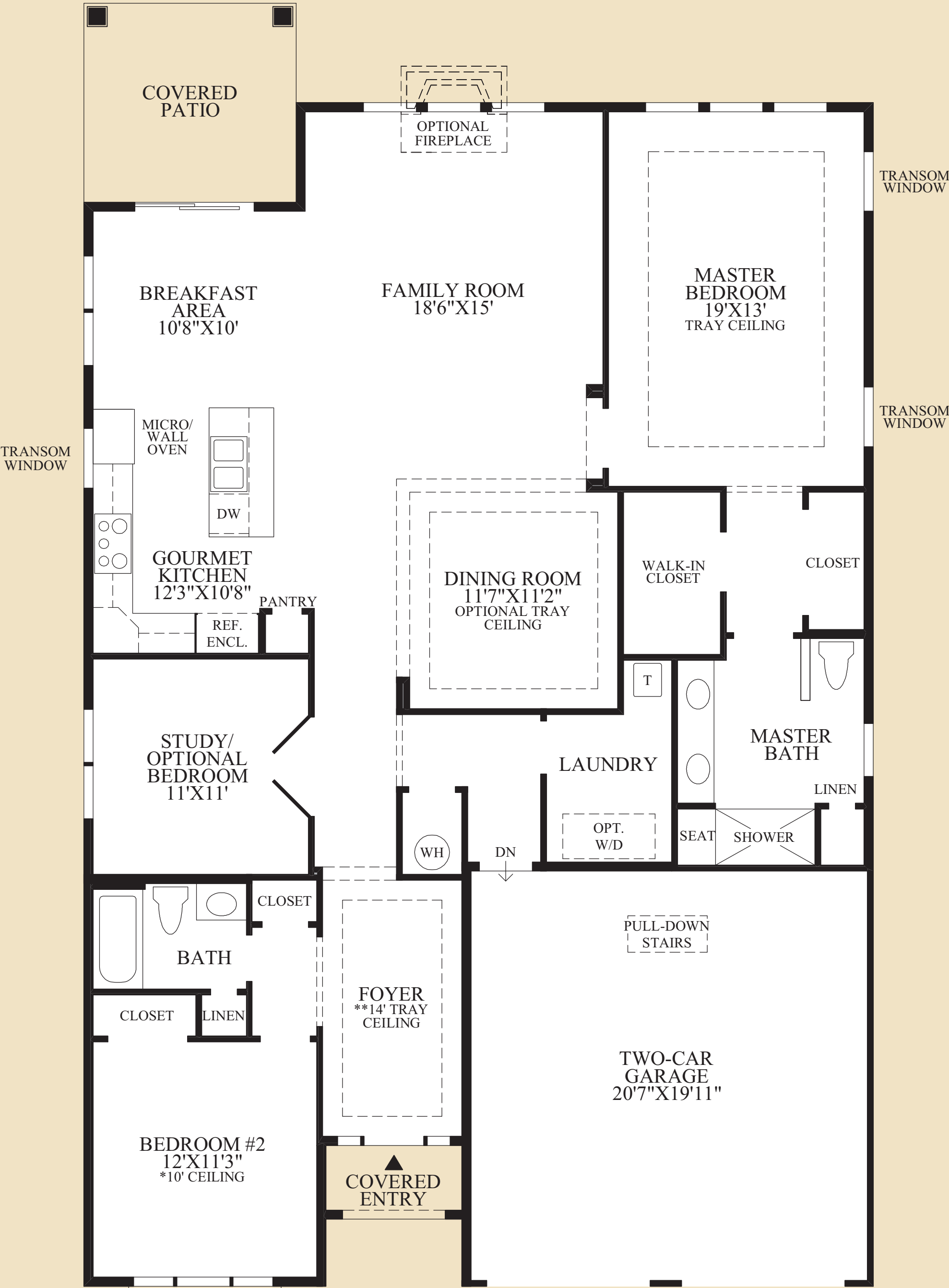
Classic

May be shown with optional features, including but not limited to brick front porch.



Traditional

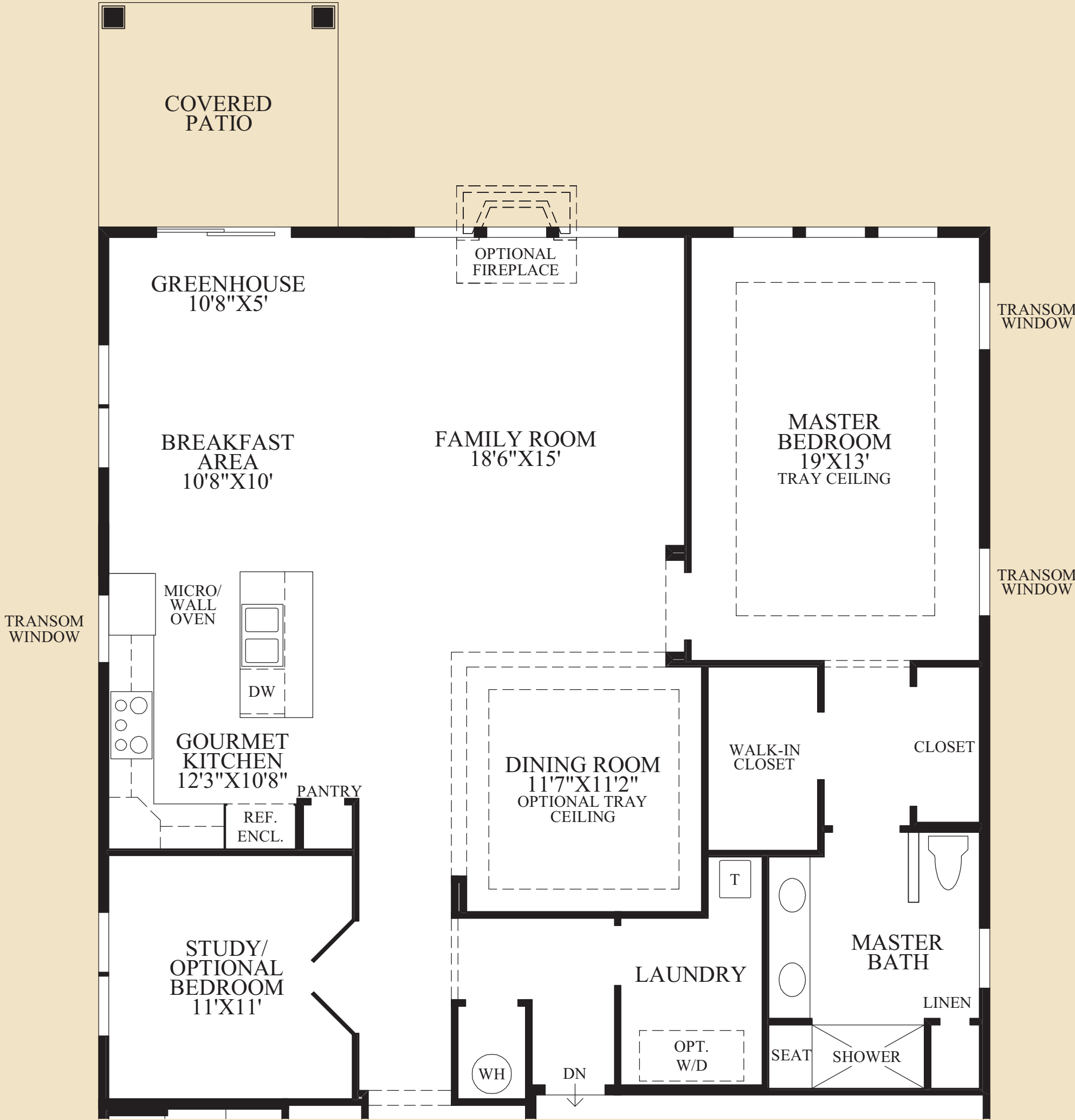
May be shown with optional features, including but not limited to brick front porch.



TRADITIONAL EXTERIOR DESIGN INCLUDES A LARGER BEDROOM #2.

NOTE:
*BEDROOM #2 INCLUDES AN ELEVEN-FOOT CEILING WITH THE CLASSIC AND TRADITIONAL EXTERIOR DESIGNS AND A TWELVE-FOOT CEILING WITH THE COUNTRY MANOR AND FEDERAL EXTERIOR DESIGNS.

**FOYER INCLUDES A 10' FLAT CEILING WITH THE CLASSIC AND TRADITIONAL EXTERIOR DESIGNS.



SHOWN WITH OPTIONAL GREENHOUSE

THE BINGHAMTON HIGHLIGHTS

- The foyer leads to the study with double doors and the formal dining room.
- The kitchen boasts a center island that overlooks the sunlit breakfast area, the large family room, and the formal dining room creating an ideal space for entertaining.
- The master bedroom with tray ceiling includes a walk-in closet and a private bath with a dual-sink vanity and a shower with a seat.
- This home also includes an additional bedroom with access to the hall bath.
- Also included is a convenient laundry room.
- Ten-foot ceilings throughout.

Floor Plan