



BLENNHEIM | Exterior Designs

THE BLENHEIM

DRAFT





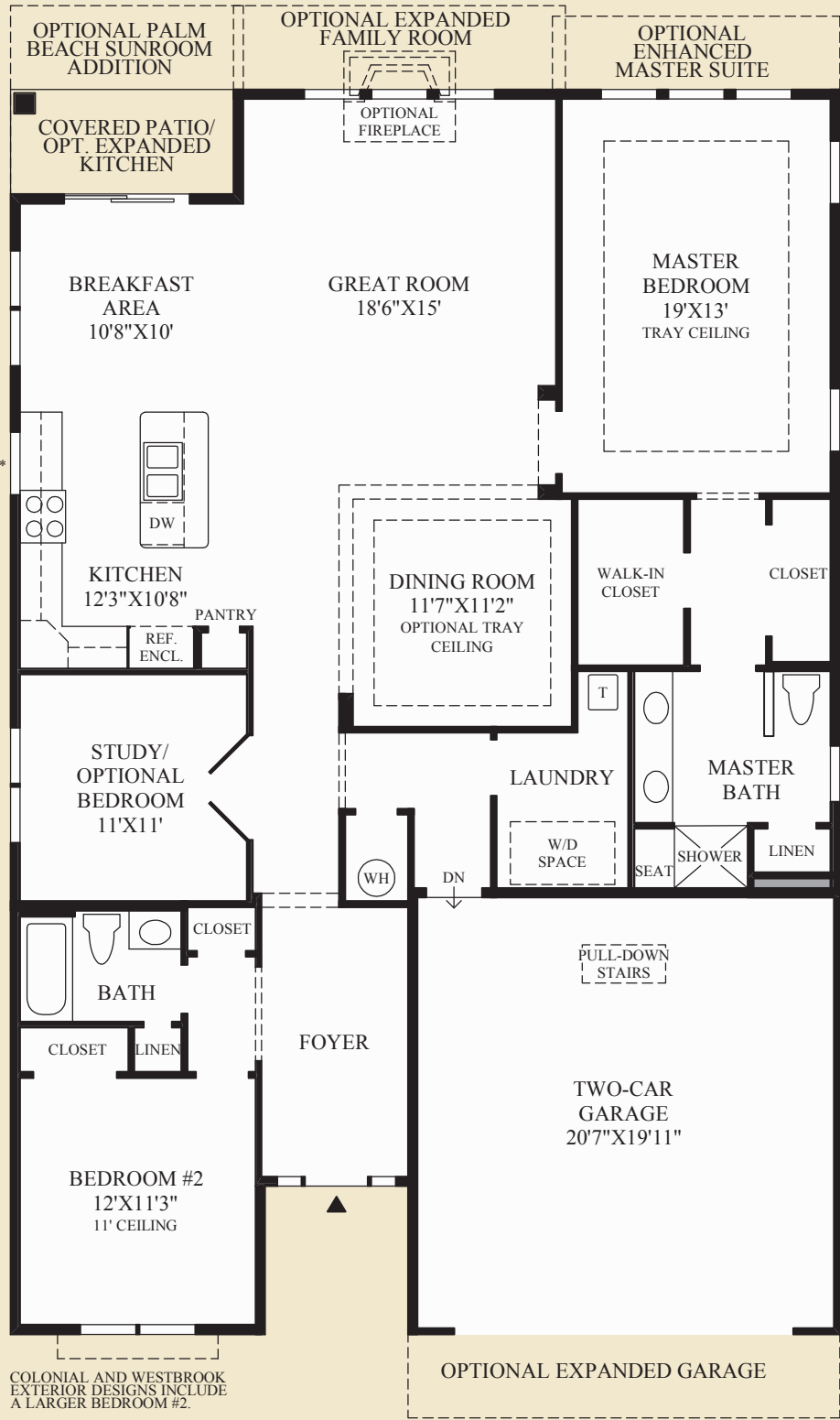
THE BLENHEIM | Floor Plan

2 to 4 Bedrooms | 2 to 3 Baths | 2-Car Garage

DRAFT

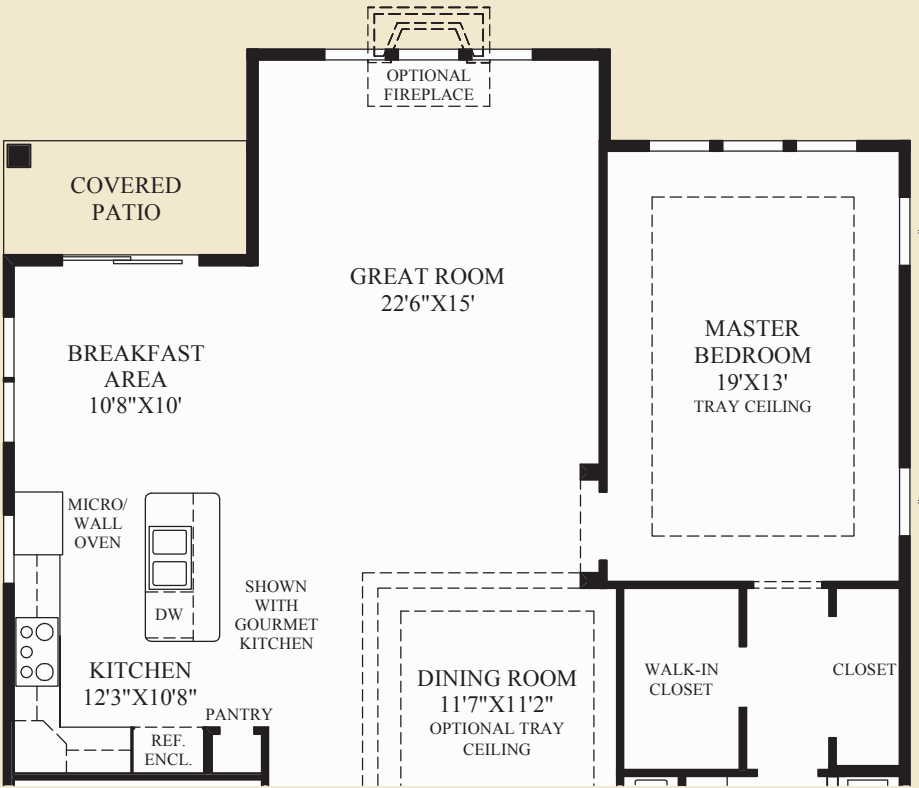


SHOWN WITH OPTIONAL ADDITIONAL  
GAS DIRECT VENT FIREPLACE - GREAT ROOM



\* DENOTES HIGH WINDOW

Floor Plan



SHOWN WITH:  
· OPTIONAL EXPANDED GREAT ROOM  
· OPTIONAL GOURMET KITCHEN

DRAFT

THE BLENHEIM HIGHLIGHTS

- The foyer leads to the study with double door entry and formal dining room.
- The kitchen boasts a center island that overlooks the sunlit breakfast area, the large great room, and the formal dining room, creating an ideal space for entertaining.
- The master bedroom with tray ceiling includes a walk-in closet and a private bath with a dual-sink vanity and a shower with a seat.
- Other features of this home include second bedroom features convenient access to the hall bath and a laundry.
- This home features ten-foot ceilings throughout.



Master Bedroom

Photographs, renderings, and floor plans are for representational purposes only and may not reflect the exact features or dimensions of your home. All dimensions are subject to field variations. Some design features and options shown may not be offered in your community. All options to be included in your home must be specified in an Exhibit B to the Agreement of Sale. All Toll Brothers floor plans and designs are copyrighted. All rights reserved and strictly enforced. This is not an offering where prohibited by law. Please consult our sales representative for details.