



Carolina

THE BRADBURY

THE BRADBURY | Exterior Designs

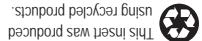


Classic/Heritage/Country Manor/Georgian/Virginian/Carolina/Williamsburg

May be shown with optional features, including but not limited to finished loft, elite option, and dormers.



Toll Brothers
AMERICA'S LUXURY HOME BUILDER®

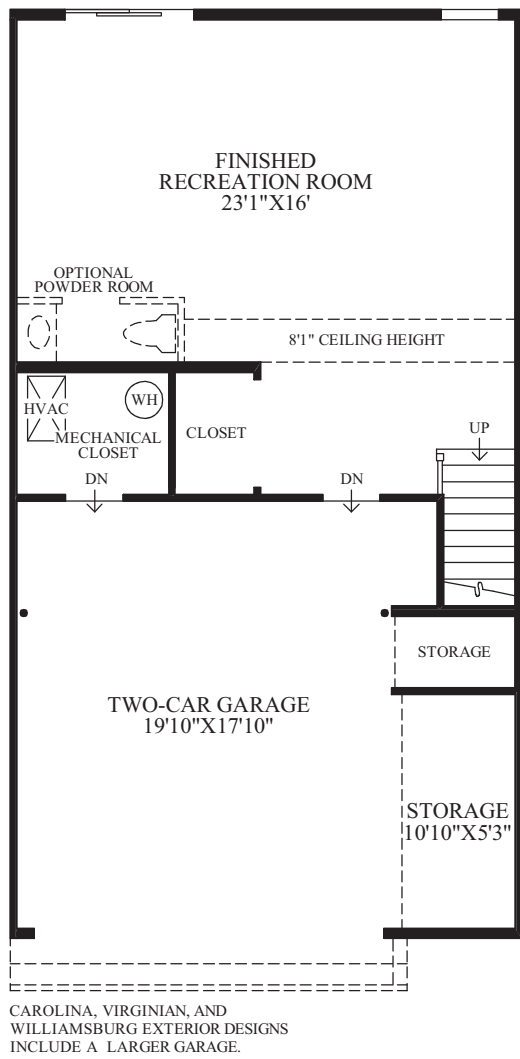


This model was produced using recycled products.

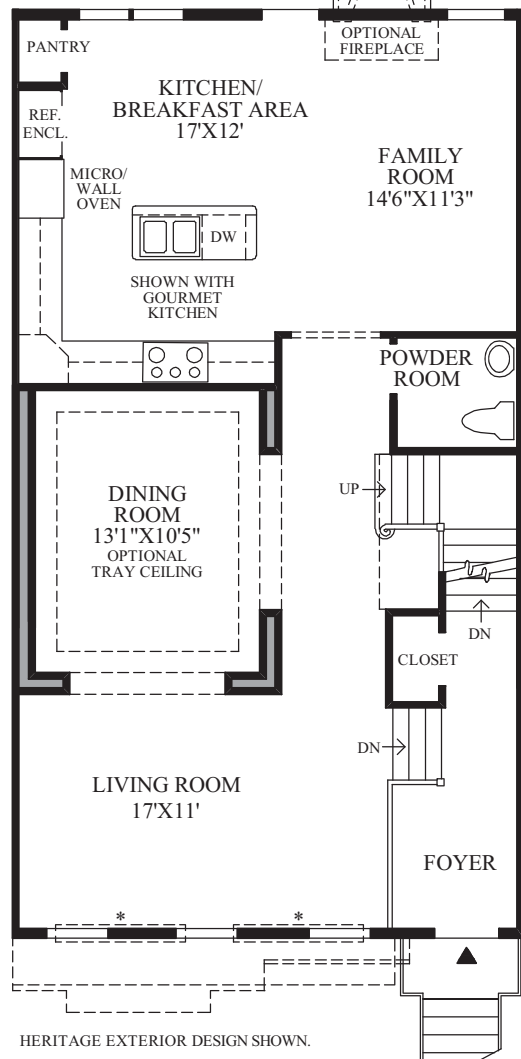
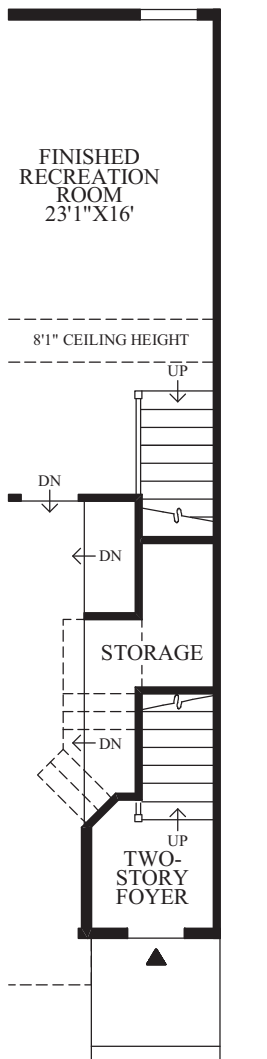
Living Room with Elite Option



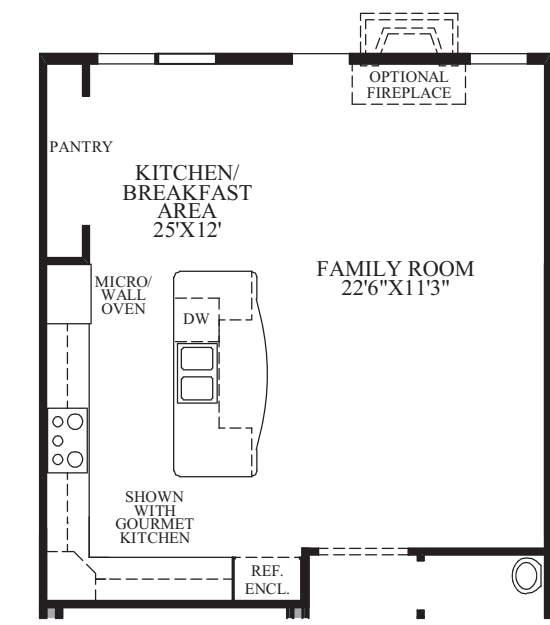
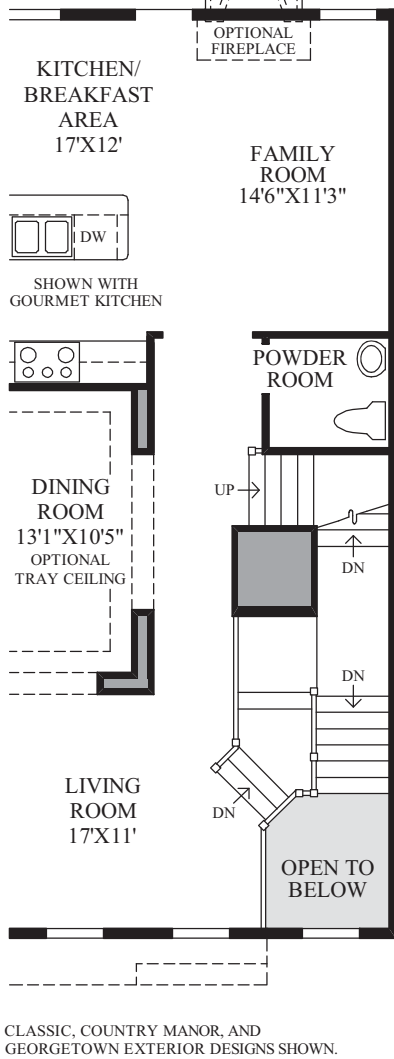
THE BRADBURY | Interior



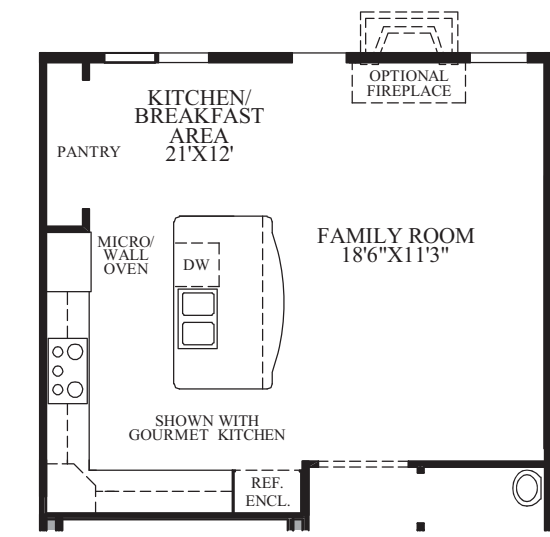
Lower Level



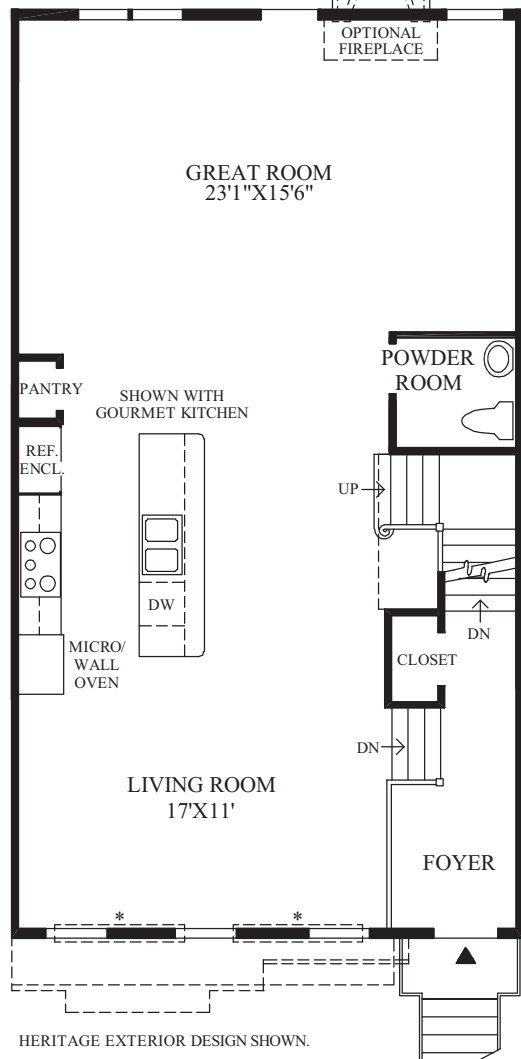
Living Level



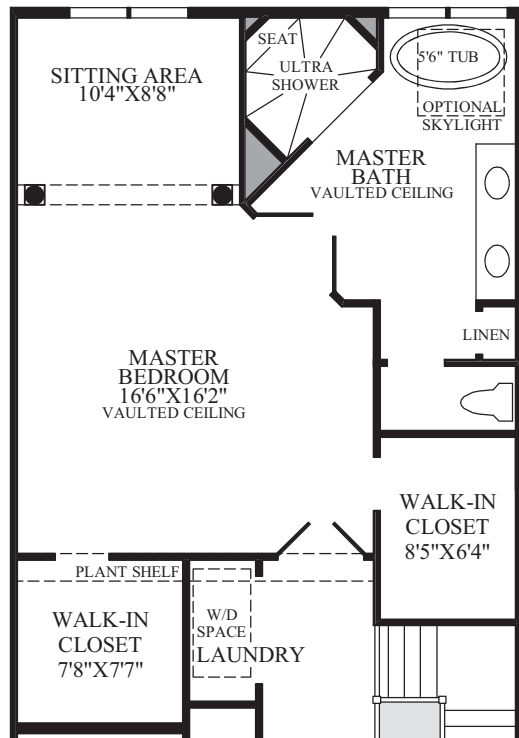
SHOWN WITH OPTIONAL MARQUEE 8' EXTENSION (LIVING LEVEL)



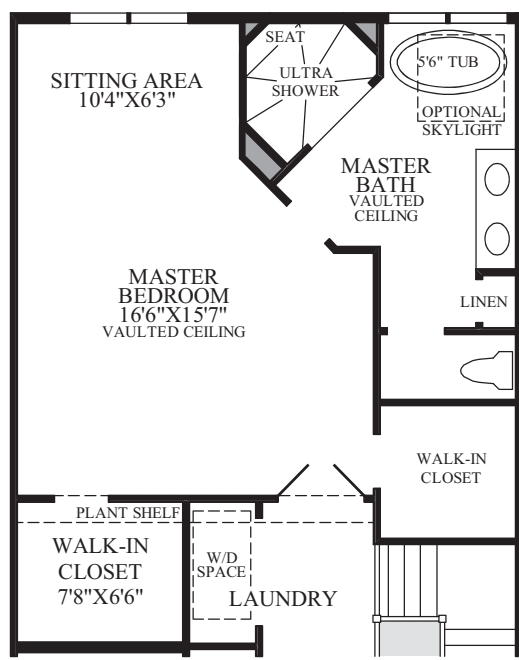
SHOWN WITH OPTIONAL PREMIER 4' EXTENSION (LIVING LEVEL)



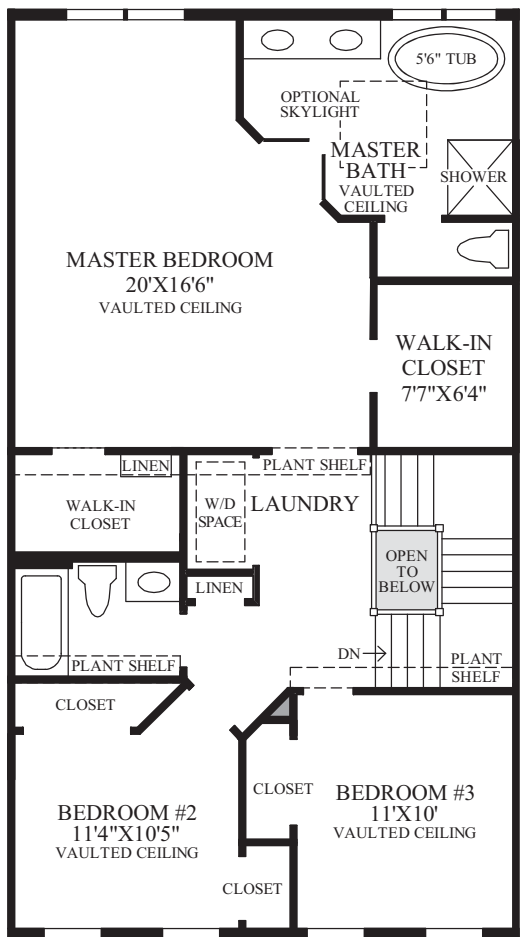
SHOWN WITH OPTIONAL GREAT ROOM



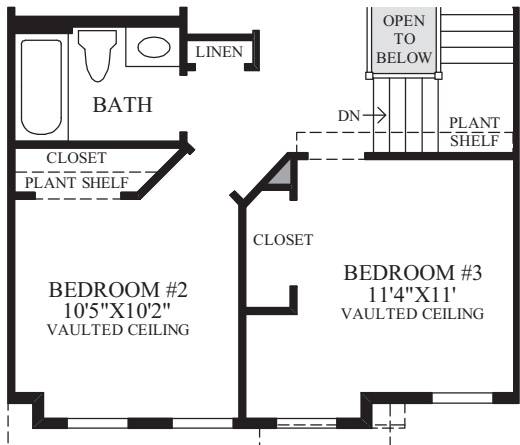
SHOWN WITH OPTIONAL MARQUEE 8' EXTENSION WITH ULTRA SHOWER (BEDROOM LEVEL)



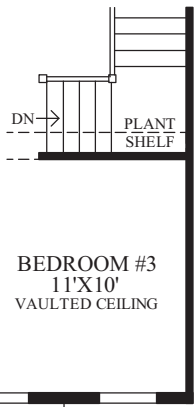
SHOWN WITH OPTIONAL PREMIER 4' EXTENSION WITH ULTRA SHOWER (BEDROOM LEVEL)



Bedroom Level



CAROLINA, VIRGINIAN, AND WILLIAMSBURG EXTERIOR DESIGNS INCLUDE LARGER BEDROOMS #2 AND #3.



CLASSIC AND COUNTRY MANOR EXTERIOR DESIGNS INCLUDE LARGER BEDROOMS #2 AND #3.

THE BRADBURY HIGHLIGHTS

- The well-appointed kitchen is adjacent to the cozy family room.
- The living room opens to the dining room creating an ideal space for entertaining family and friends.
- Master bedroom suite includes a vaulted ceiling, two walk-in closets, and a private master with dual-sink vanity, separate shower, Roman tub, and a vaulted ceiling.
- Bedrooms 2 and 3 include vaulted ceilings and are conveniently located near their own bath.
- This home features nine-foot main level and lower level ceilings are standard.
- A standard two-car garage and finished recreation room.



Master Bedroom