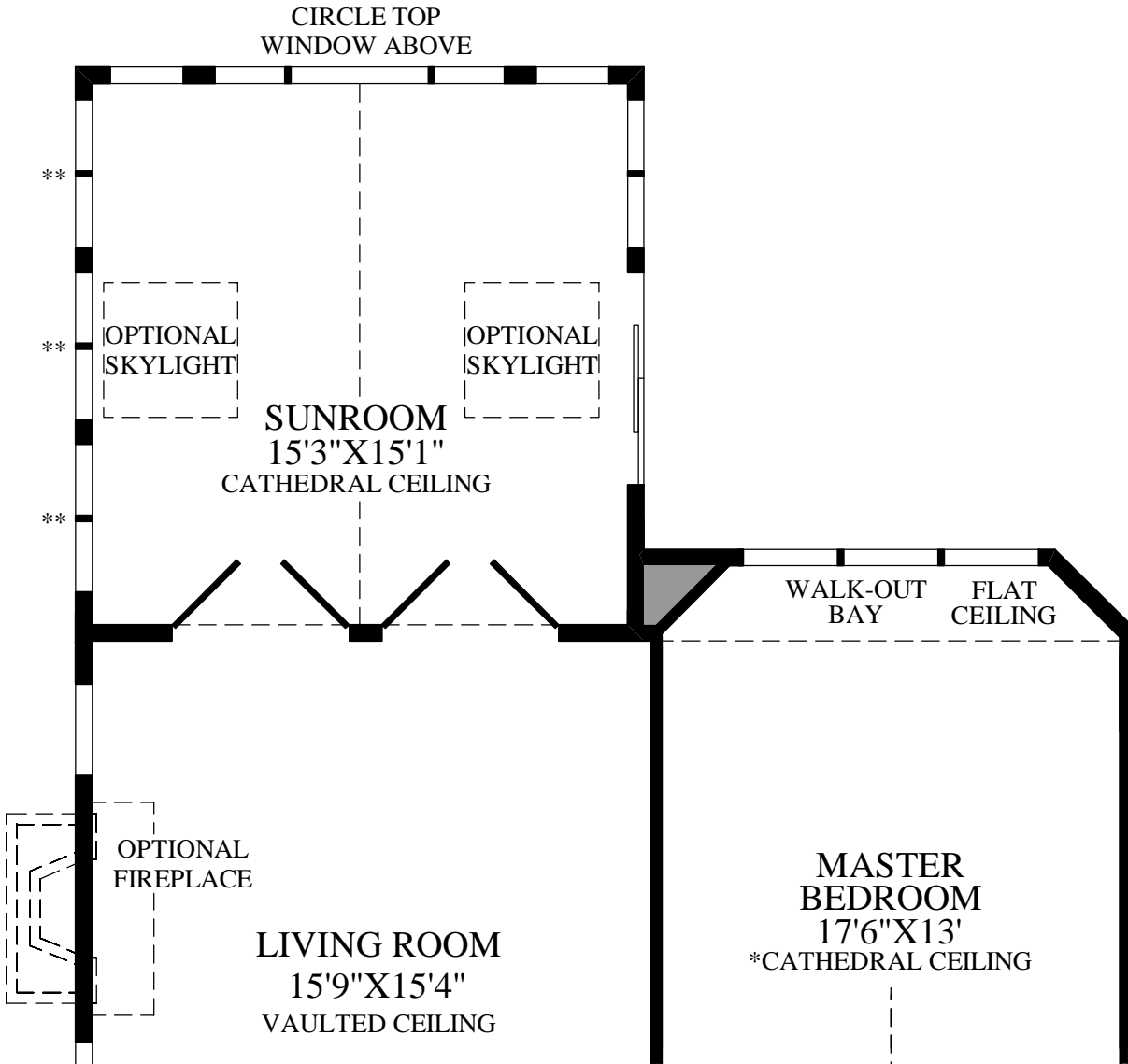
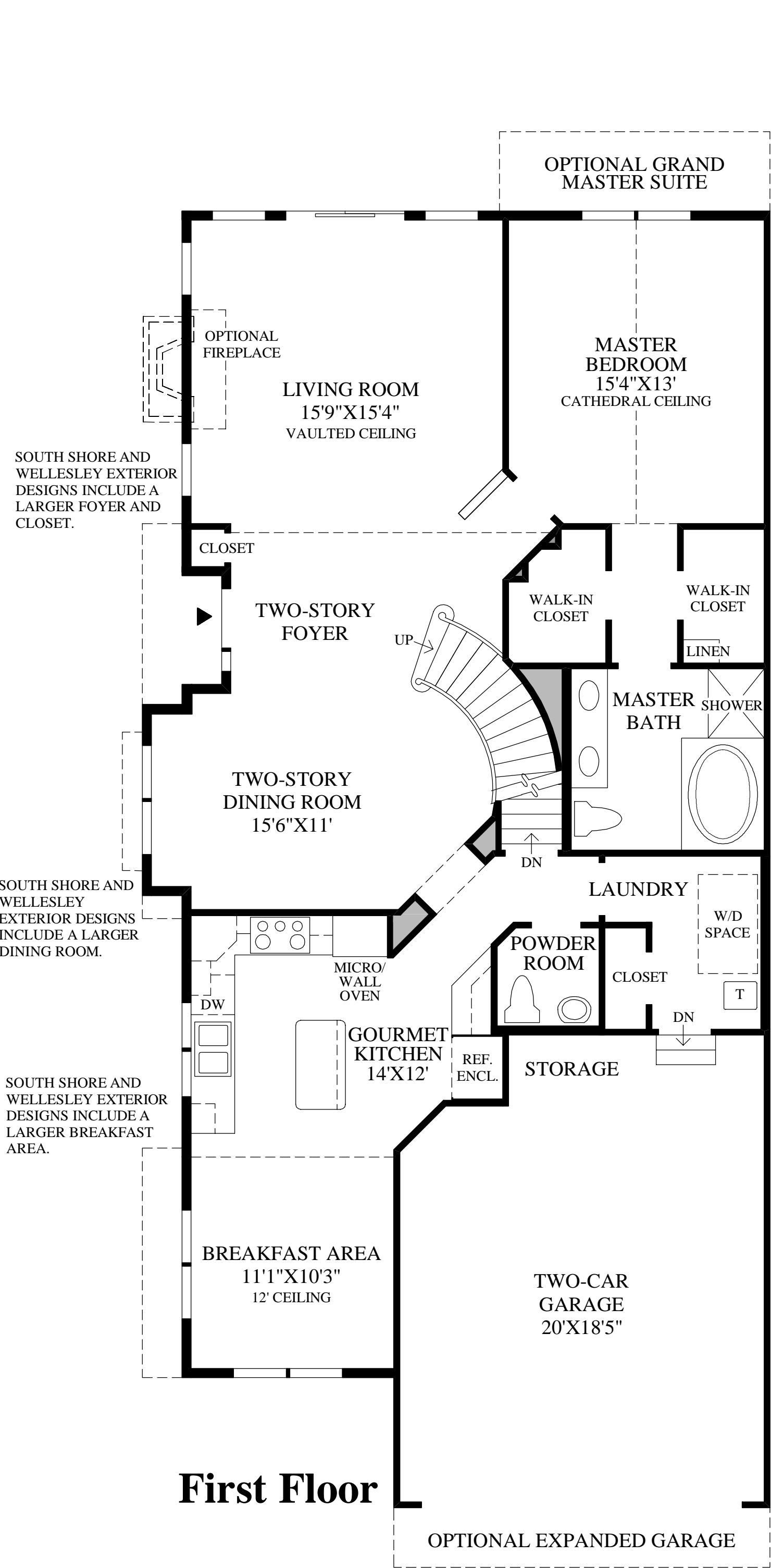




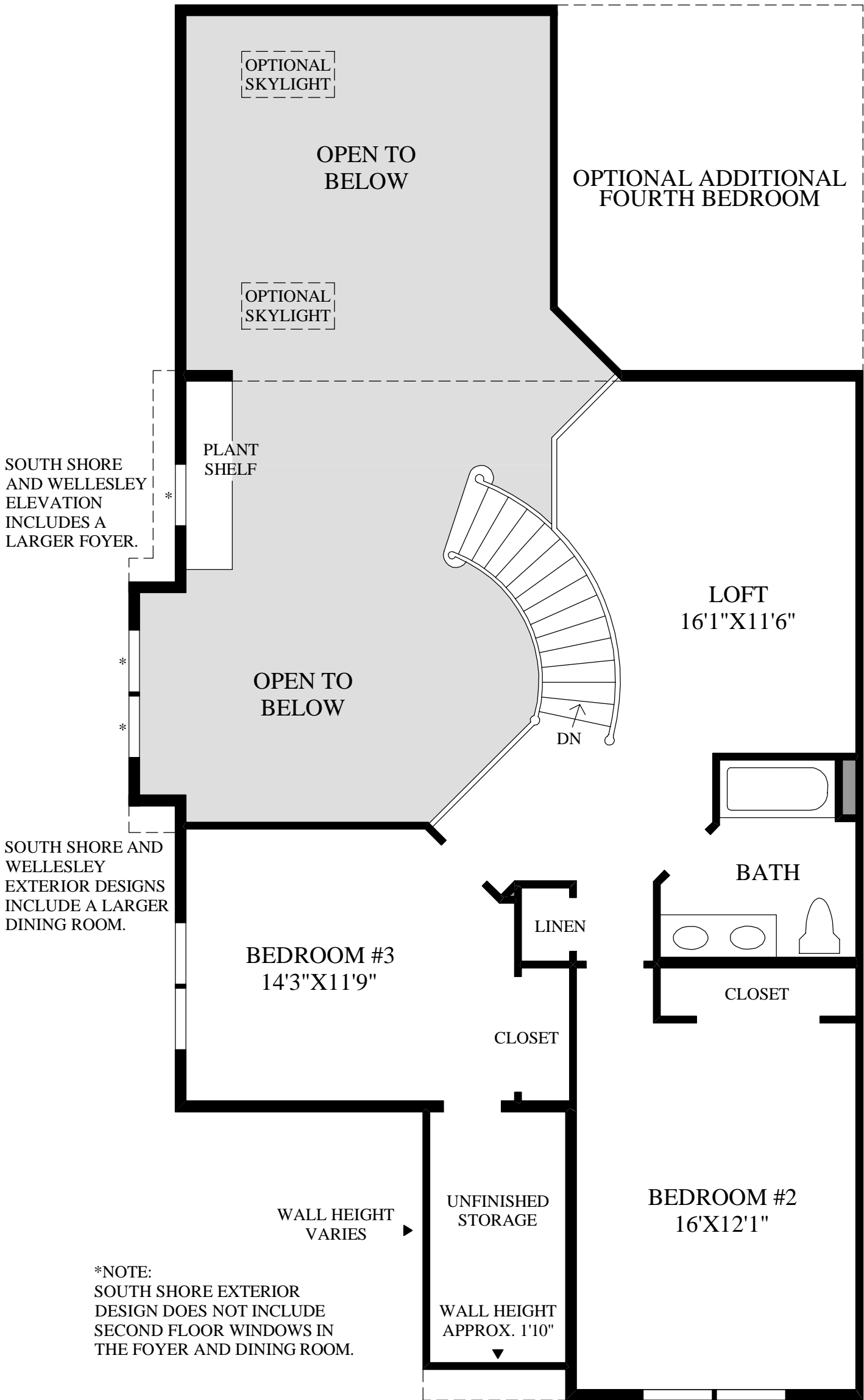
**NOTE:
WINDOWS VARY PER EXTERIOR
DESIGN. SEE SALES REPRESENTATIVE
FOR DETAILS.



- SHOWN WITH:
- OPTIONAL PALM BEACH SUNROOM ADDITION
 - OPTIONAL WALK-OUT BAY



First Floor



Second Floor

*NOTE:
SOUTH SHORE EXTERIOR
DESIGN DOES NOT INCLUDE
SECOND FLOOR WINDOWS IN
THE FOYER AND DINING ROOM.

THE BRISTOL HIGHLIGHTS

- The two-story foyer opens to the formal two-story dining room and the spacious living room.
- The well-appointed kitchen opens to the sunny breakfast area.
- The master bedroom includes a private bath with a Roman tub and large walk-in closets.
- Loft overlooks the foyer, living, and dining room areas.
- This home features nine-foot ceilings throughout the first floor.



Dining Room