

DRAFT

THE BRIZO | Exterior Designs



Mid-Century



Contemporary

THE BRIZO

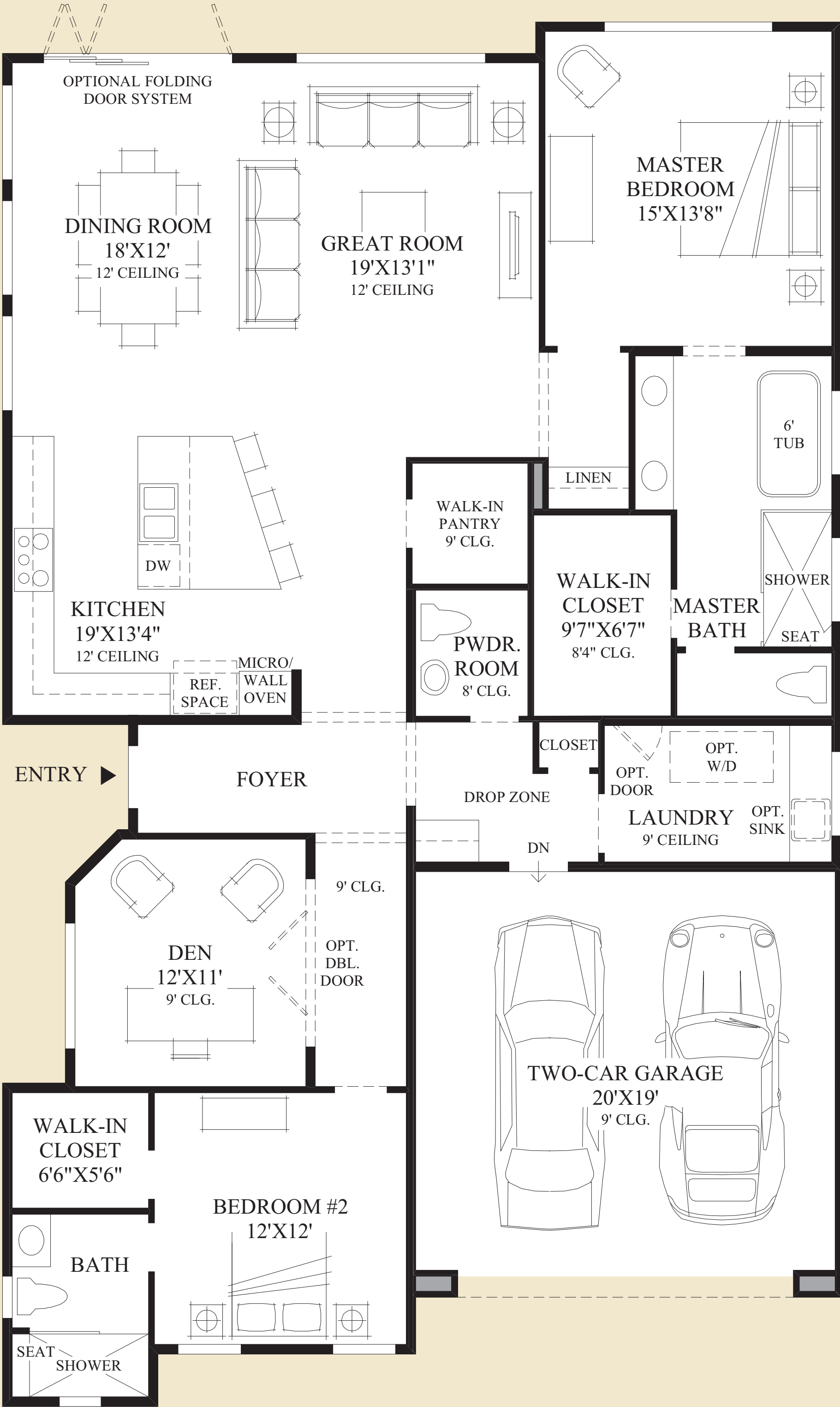
DRAFT

Toll Brothers
America's Luxury Home Builder®



International

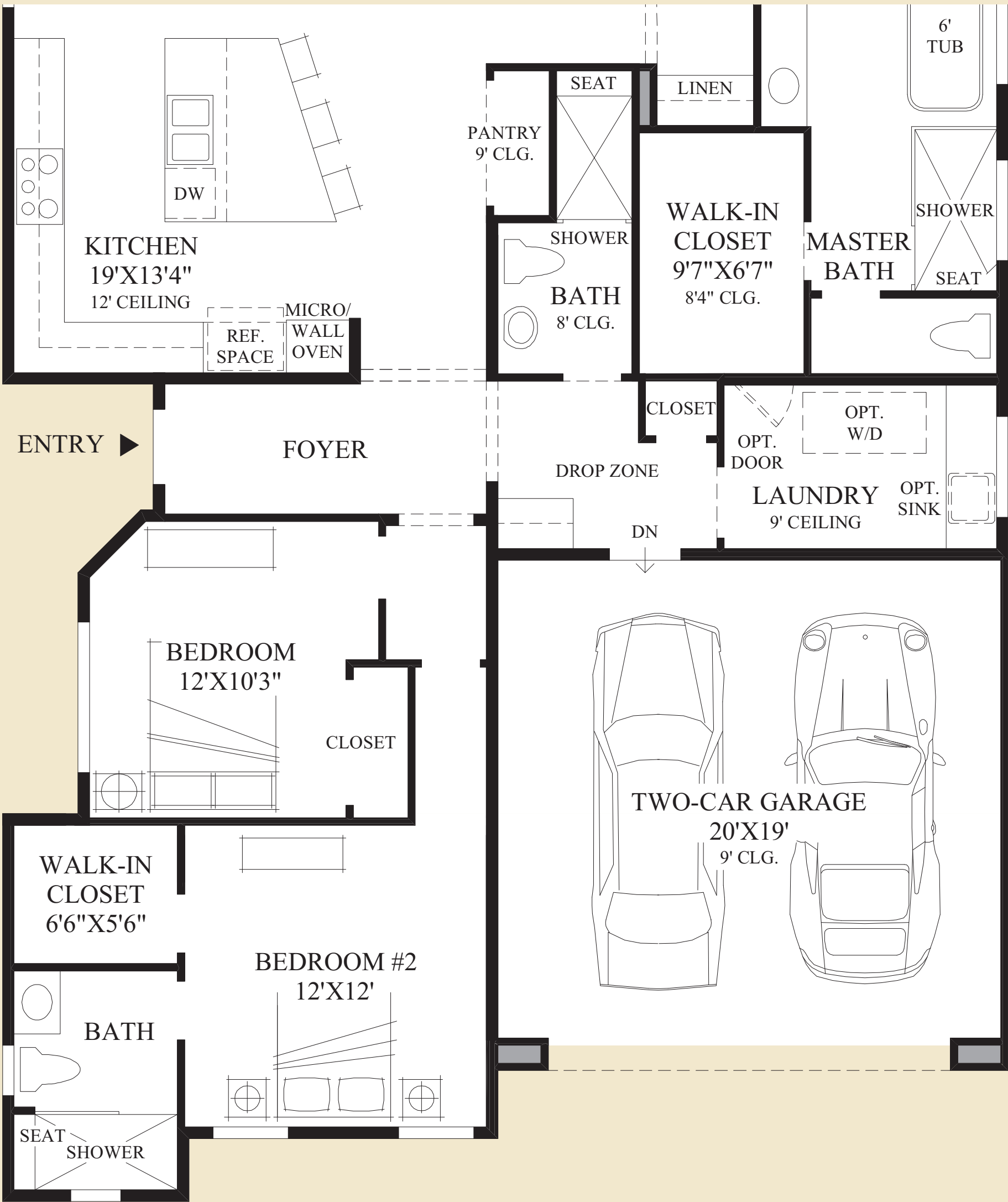
DRAFT



Floor Plan
CONTEMPORARY EXTERIOR DESIGN SHOWN

THE BRIZO HIGHLIGHTS

- Upon entering the home, the splendid foyer separates the private and entertaining areas of the home.
- Around the corner from the foyer is an open kitchen and great room layout that features a 12' ceiling and ample space for entertaining guests.
- The desirable kitchen is equipped with a unique center island and plenty of cabinet and counter space.
- A variety of windows and a 9' sliding glass door let an abundance of light into the great room and dining room.
- The master bedroom is tucked away from the great room and is distinguished by a sizeable master bath that features a dual-sink vanity, a standalone soaking tub, a glass-enclosed shower, a private water closet, and a substantial walk-in closet.
- Also included is a private den and a generous secondary bedroom that is complete with a private bath and a walk-in closet.



SHOWN WITH OPTIONAL
ADDITIONAL BEDROOM

DRAFT