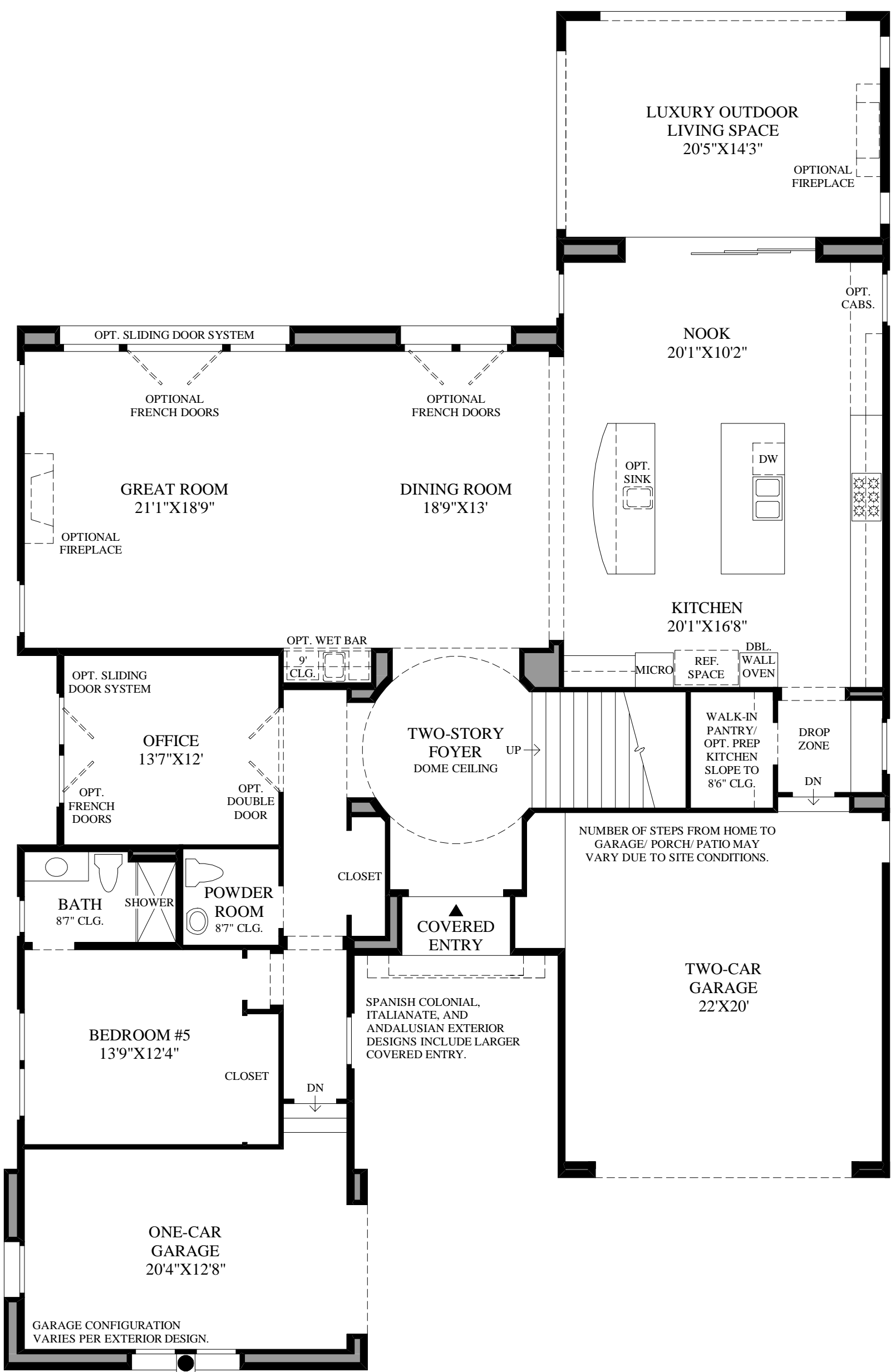
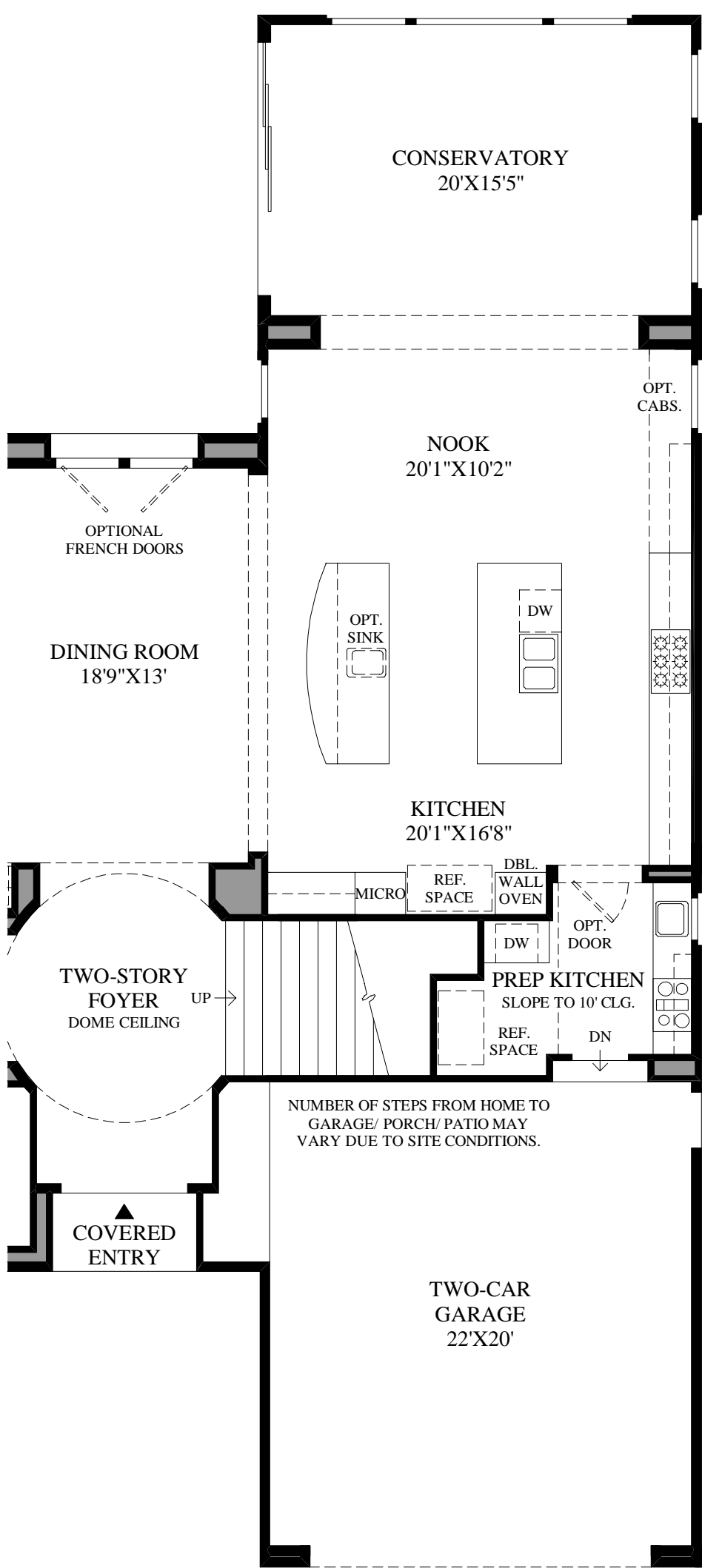


THE CAHILL HIGHLIGHTS

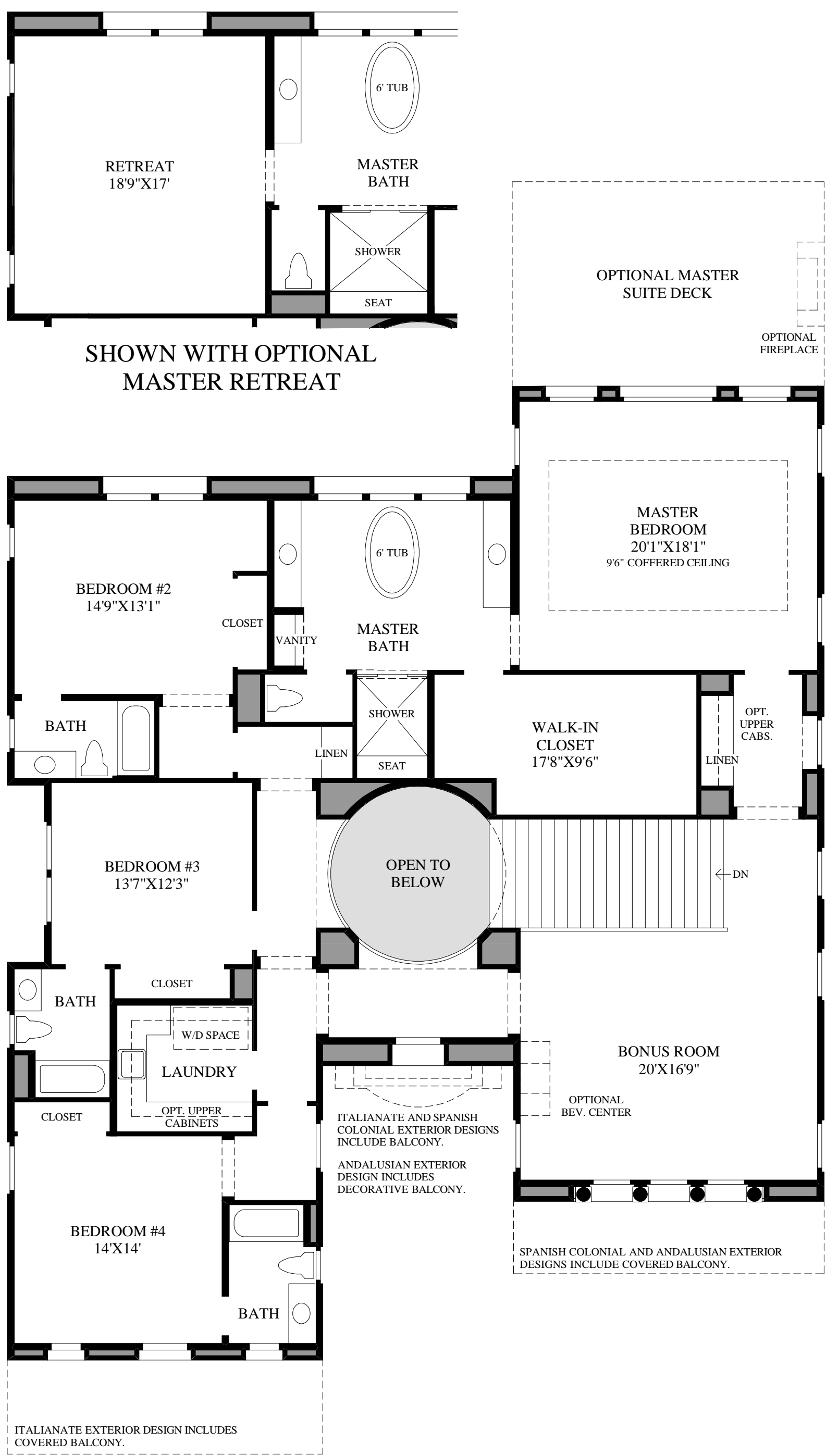
- A welcoming covered entry opens to a breathtaking foyer that is accented by a soaring dome ceiling and a stately staircase to the second floor.
- This beautiful kitchen features two center islands; one with a breakfast bar, a large walk-in pantry, and an adjoining nook with access to the luxury outdoor living space.
- The stunning open-concept great room and dining room boast large windows for ample natural light and make an ideal space for hosting any size social event.
- The second floor is highlighted by the versatile bonus room, which provides an alternative living space central to the bedrooms.
- This gorgeous master bedroom features a king-sized walk-in closet and a magnificent master bath with dual vanities, a large soaking tub, and a luxurious shower with a seat.
- Additional features include a secluded office, an appealing first-floor bedroom perfect for guests, and a convenient laundry location centralized to all of the bedrooms.



First Floor  
TUSCAN EXTERIOR DESIGN SHOWN



SHOWN WITH:  
• OPTIONAL CONSERVATORY  
• OPTIONAL PREP KITCHEN



Second Floor