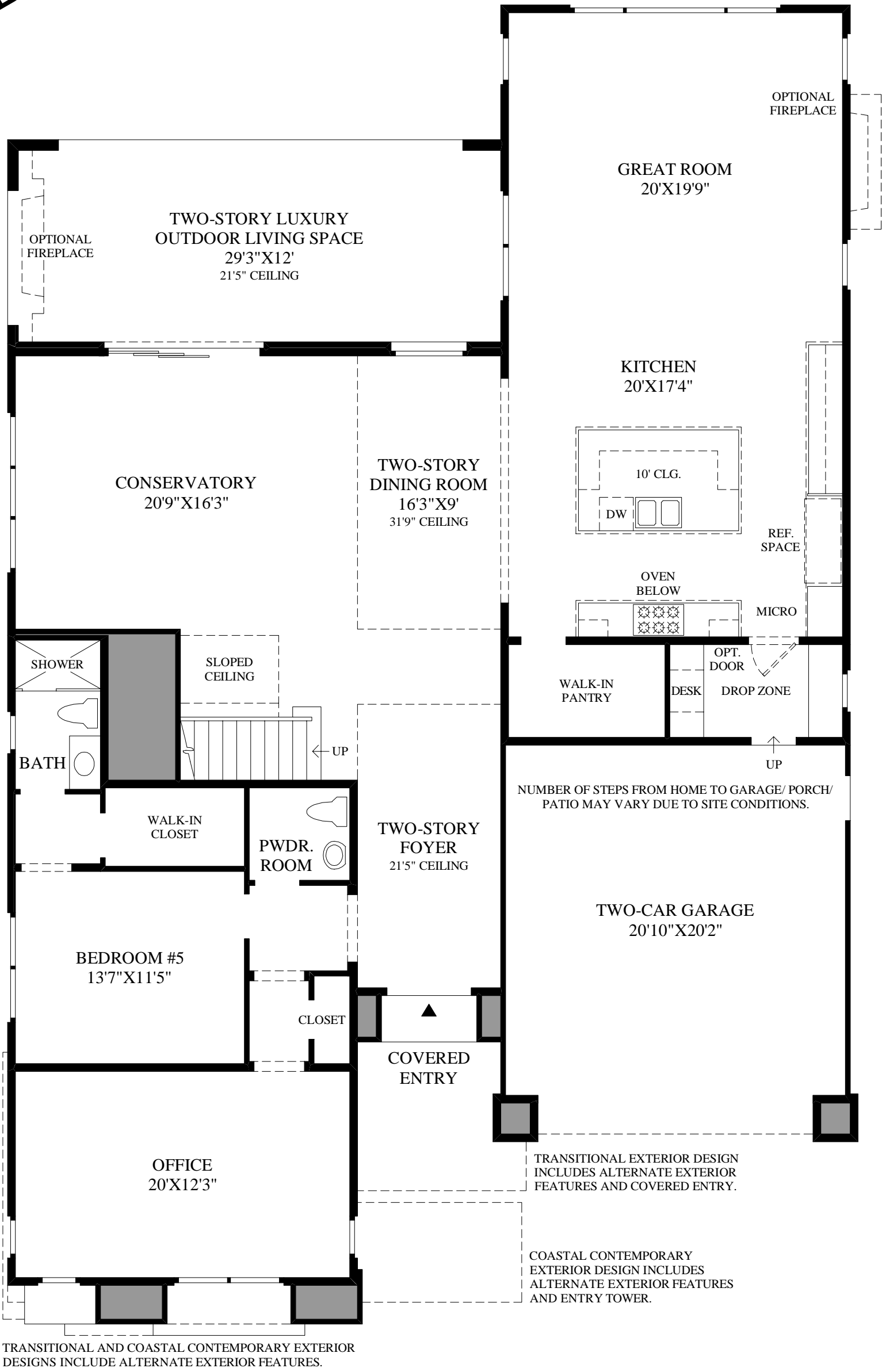
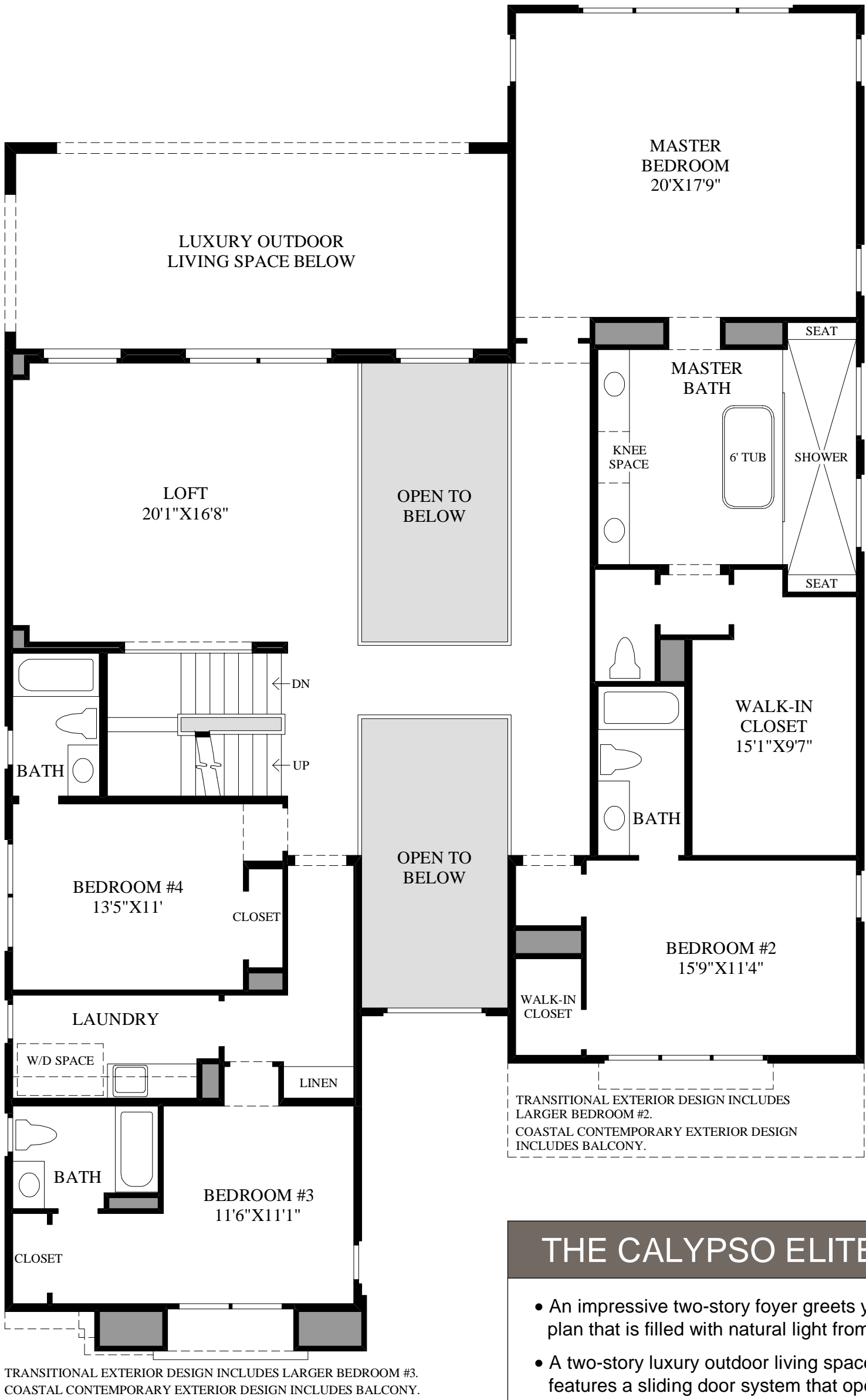


DRAFT

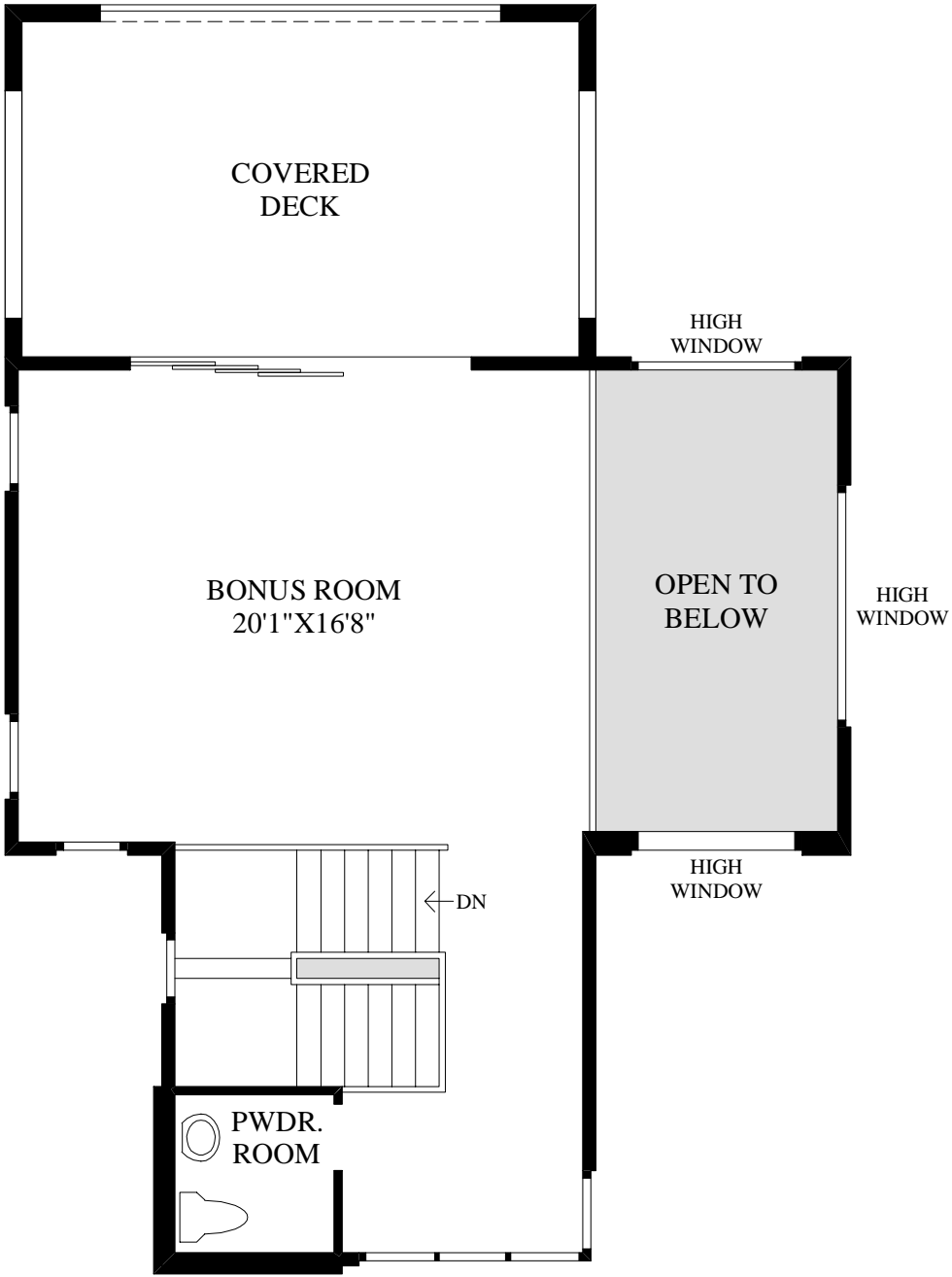


First Floor

MODERN EXTERIOR DESIGN SHOWN



Second Floor



Third Floor

DRAFT

THE CALYPSO ELITE HIGHLIGHTS

- An impressive two-story foyer greets you before leading you into this fantastic open floor plan that is filled with natural light from an awe-inspiring triple-volume space.
- A two-story luxury outdoor living space adds a tasteful ambience to the conservatory, which features a sliding door system that opens the home to the outdoors.
- This exquisite kitchen is complete with a king-sized center island that incorporates a breakfast bar for informal dining, ample counter space, and a walk-in pantry.
- Ideal for entertaining, this marvelous home offers a spacious great room that overlooks the kitchen, a fantastic loft central to the second-floor bedrooms, and a huge bonus room with access to a splendid covered deck that is secluded on the third floor.
- The generous master bedroom boasts a stunning master bath that is complete with a standalone tub, a wonderful shower arrangement, and a sizable walk-in closet.
- Additional highlights include a full bath for each secondary bedroom, a desirable first-floor bedroom, a useful office space, and a convenient drop zone.