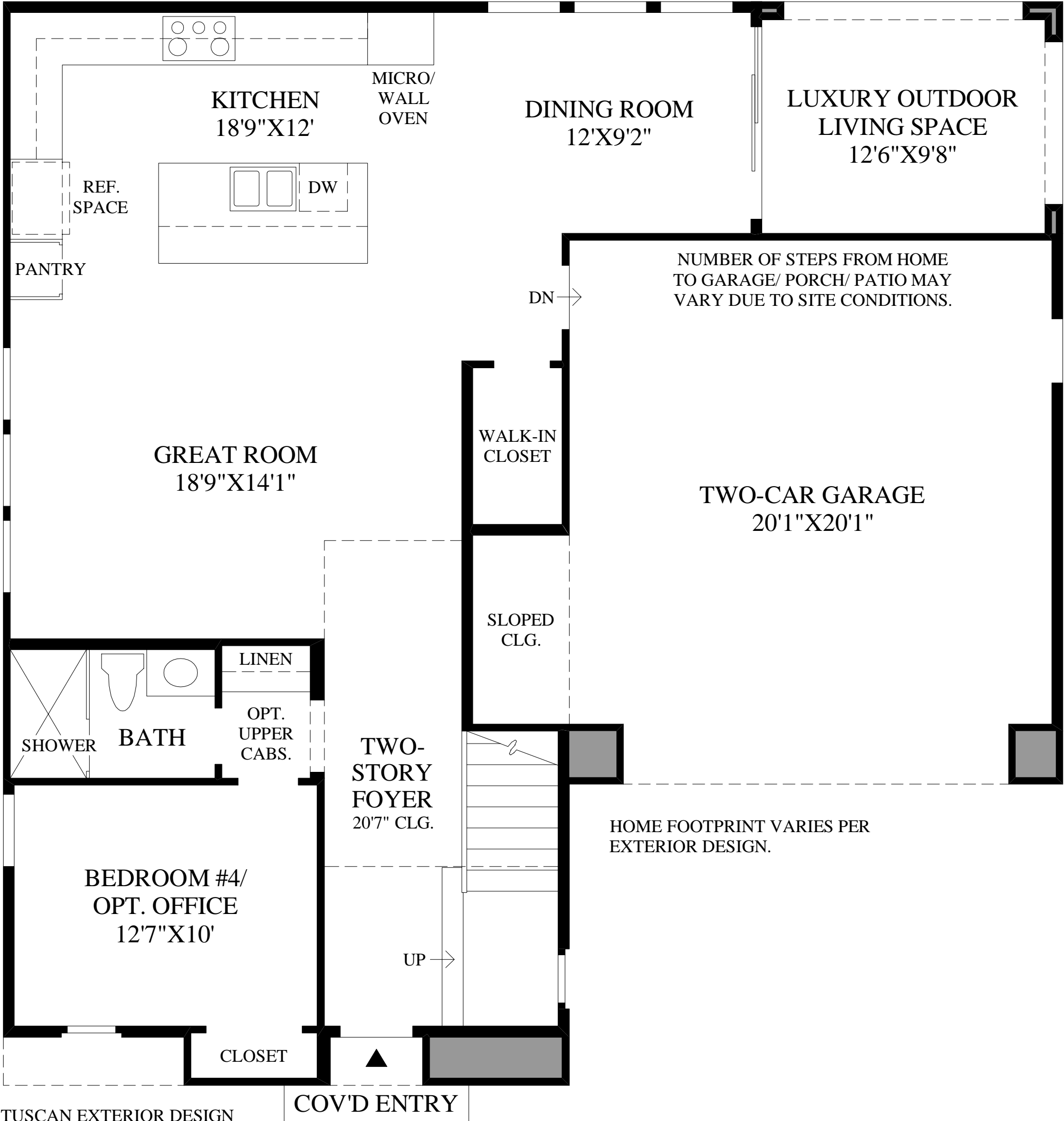


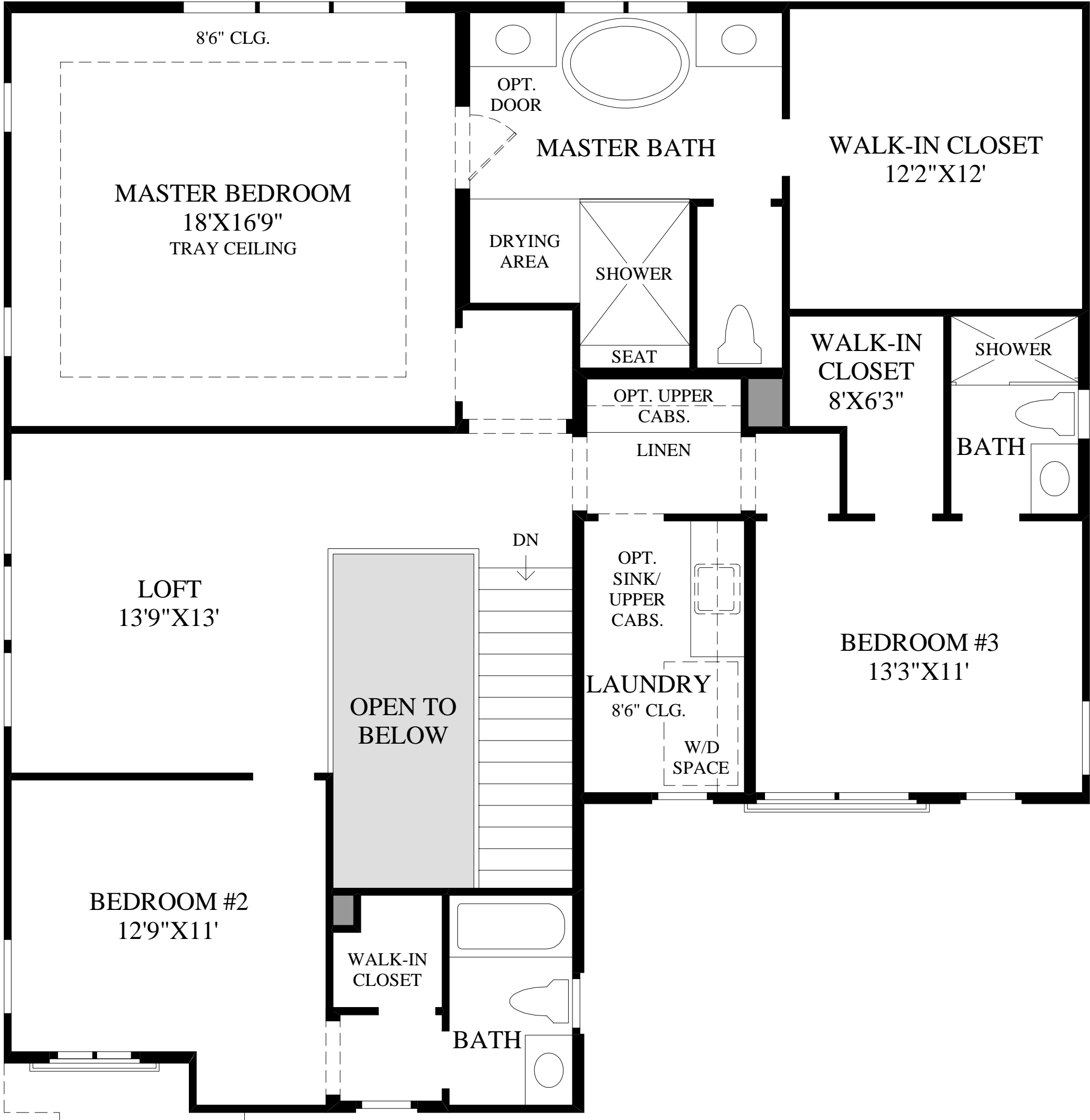
DRAFT



TUSCAN EXTERIOR DESIGN
INCLUDES LARGER BEDROOM #4.

First Floor
SPANISH COLONIAL EXTERIOR DESIGN SHOWN

DRAFT



TUSCAN EXTERIOR DESIGN
INCLUDES LARGER BEDROOM #2.

Second Floor

THE CAMDEN HIGHLIGHTS

- A stunning covered entry opens to a welcoming foyer, leading to an open two-story space.
- The great room borders the kitchen, offering an open entertainment space.
- This appealing kitchen includes ample counter space, a large center island with a breakfast bar for informal dining, and a direct line of sight to the luxury outdoor living space through a sliding glass door.
- A beautiful tray ceiling accentuates the luxurious master bedroom, which offers a king-sized walk-in closet and a spacious master bath complete with dual vanities, a free-standing tub, and a glass-enclosed shower with a seat and a drying area.
- Also included is a generous second-floor loft that is perfect for entertaining or additional living within close proximity to the bedrooms.