

The Canterra ♦ Spanish Colonial DRAFT



ARTIST RENDITION

The Canterra Spanish Colonial proudly displays excellence with its picturesque iron railing, stylish gable vents, and desirable covered front entry.

The Canterra ♦ Contemporary DRAFT



ARTIST RENDITION

A splendid array of windows, stucco banding accents, and covered front entry with stately column give the facade of the Canterra Contemporary a commanding appeal.

The Canterra ♦ Andalusian DRAFT



ARTIST RENDITION

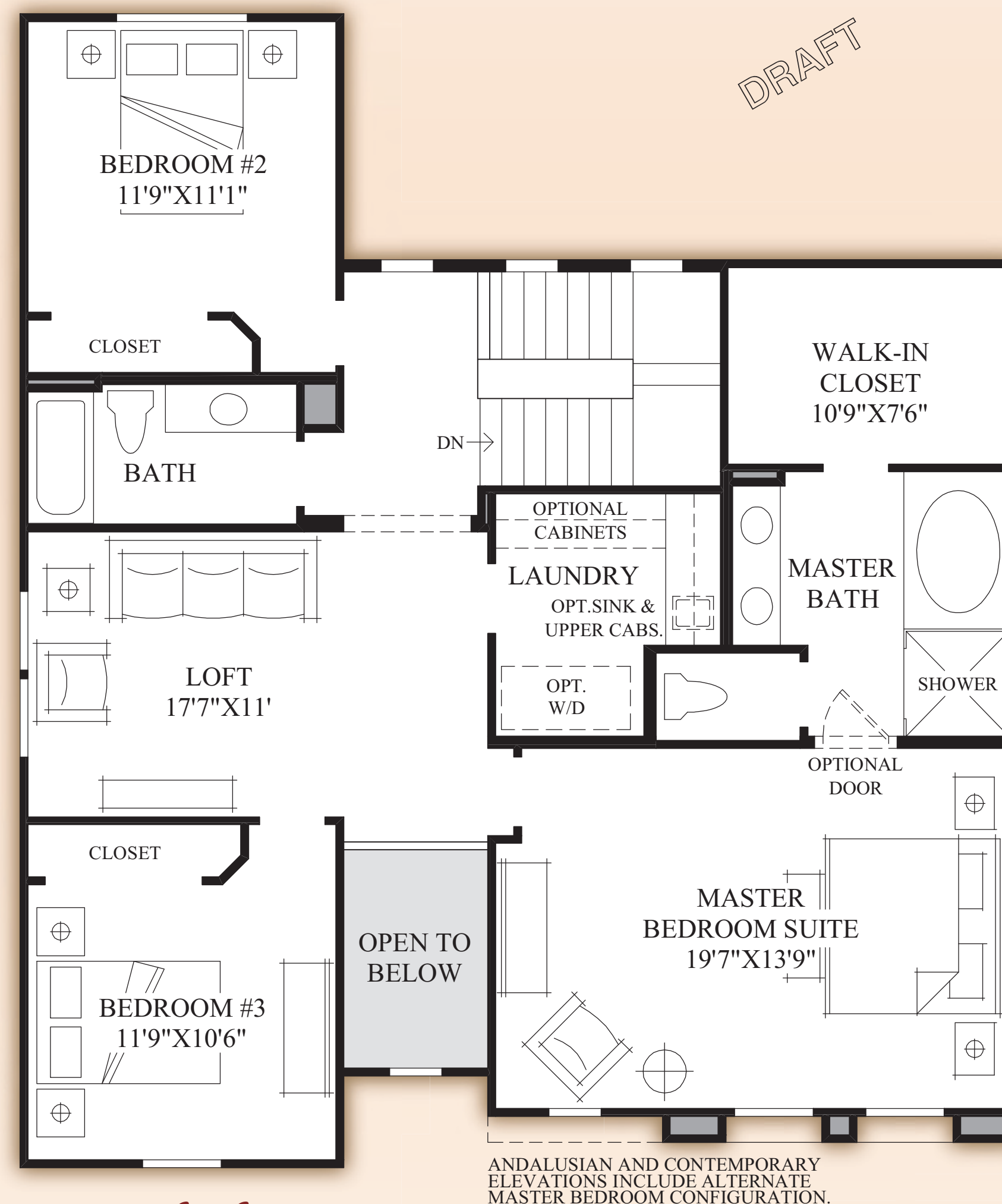
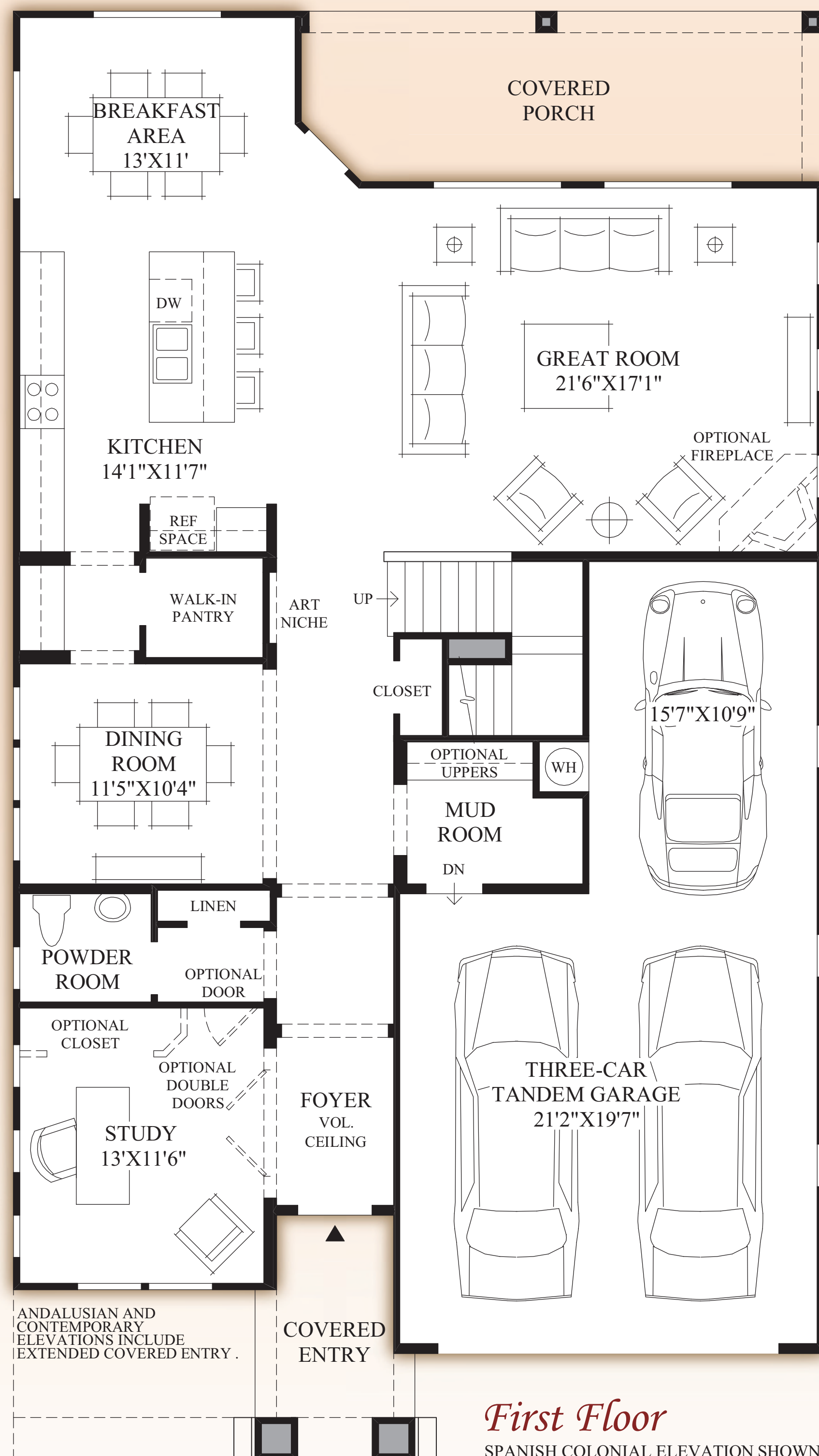
The dramatic Canterra Andalsian boasts an impressive covered porch, elegant window shutters, and exquisite wooden rafter tails.

DRAFT

The Canterra

by
Toll Brothers
America's Luxury Home Builder®
tollbrothers.com

◆ The Canterra ◆



Winsome foyer with a sensational tray ceiling opens to an exquisite dining room with a gorgeous array of windows.

Great room features impressive views to the rear yard and is conveniently located adjacent to enticing kitchen with abundant counter space, walk-in pantry, and sun-drenched breakfast area.

Master bedroom suite proudly displays a large walk-in closet, and luxurious master bath with soaking tub, dual sink vanity, and glass enclosed shower.

Spacious study, desirable loft, and three-car tandem garage round out the list of impressive features.

3 bedrooms, 2 ½ baths.

The rendering/floor plan may not reflect the exact features or dimensions of your home. All dimensions are subject to field variations. Certain design features and options may vary from community to community. All options to be included in your home must be specified in an Exhibit B to the Agreement of Sale. Please consult our sales representative for details.

(AZ-WROT/52855) 0719 ©2012 TOLL BROTHERS, INC. (CANTERRA)

Toll Brothers
America's Luxury Home Builder®
tollbrothers.com

All **Toll Brothers** floor plans and designs are copyrighted. All rights reserved and strictly enforced. This is not an offering where prohibited by law.



This insert was produced using recycled products. ♻️