

Coastal

THE CASSIA | Exterior Designs



Craftsman

THE CASSIA



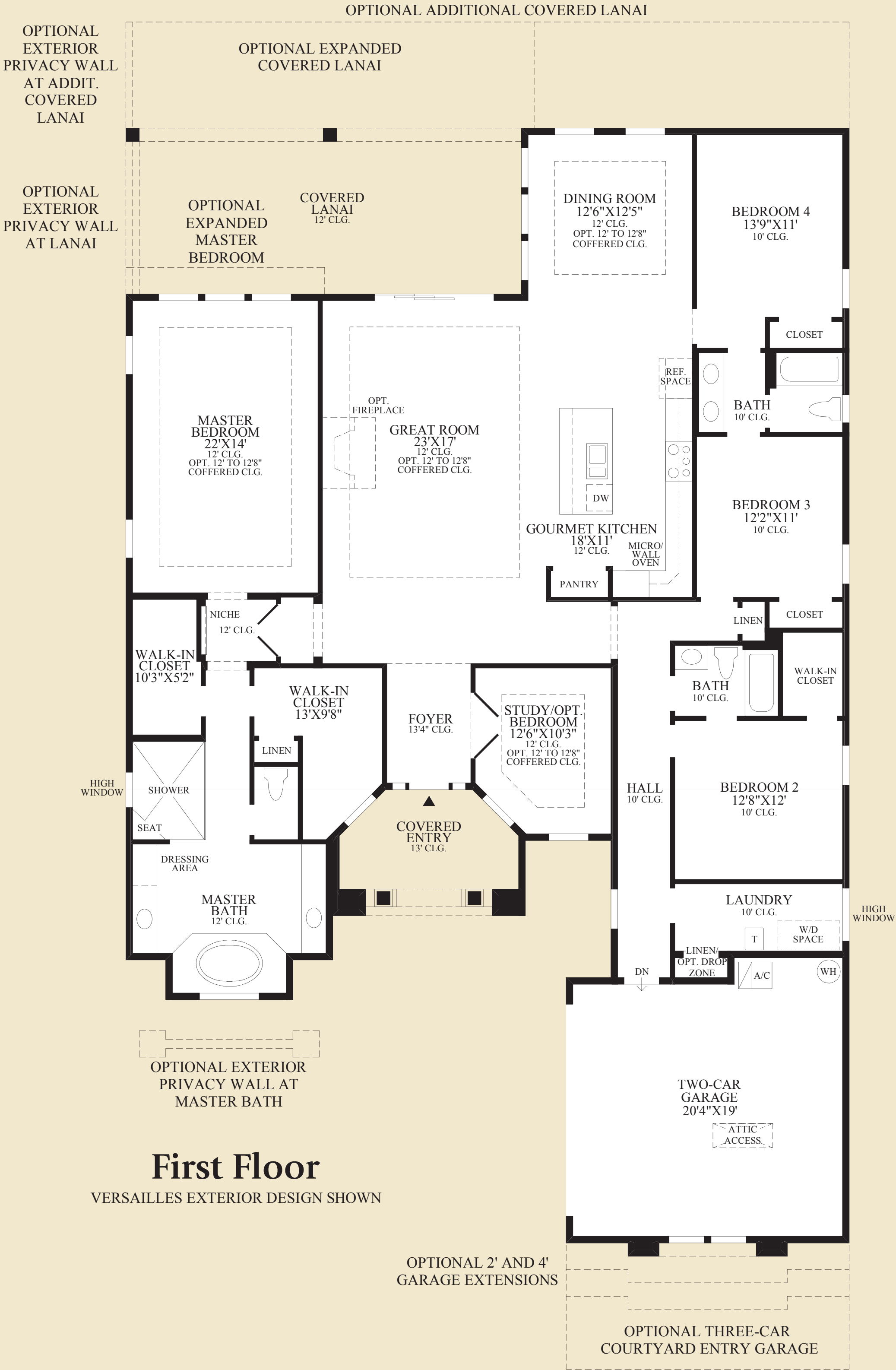
Traditional

*Toll Brothers*  
AMERICA'S LUXURY HOME BUILDER®

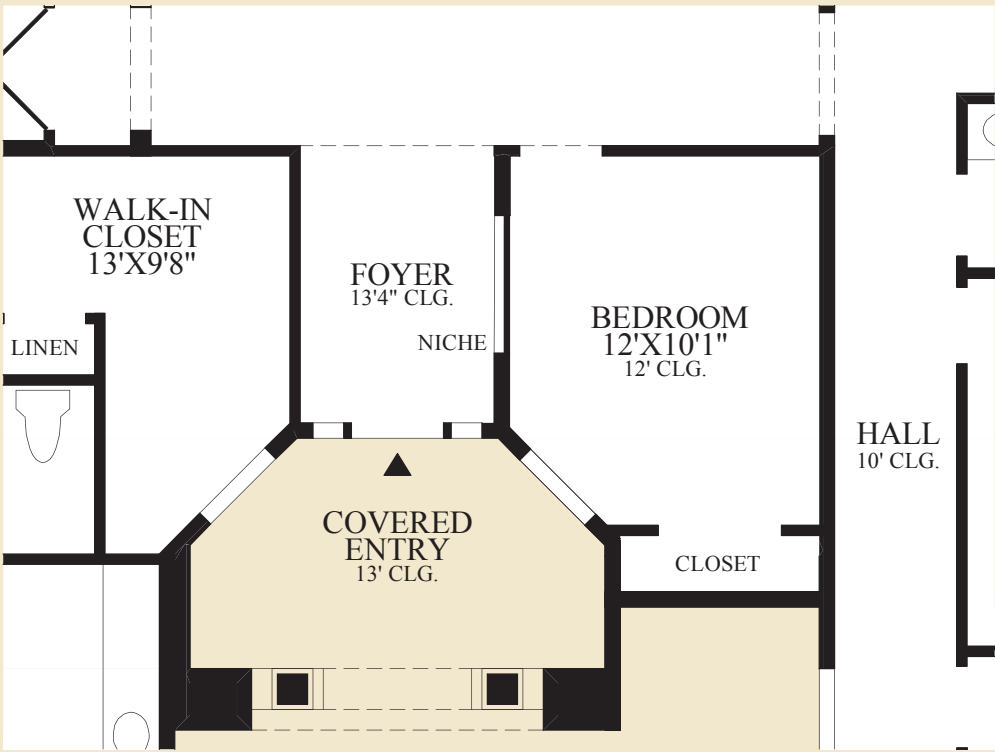


Manor

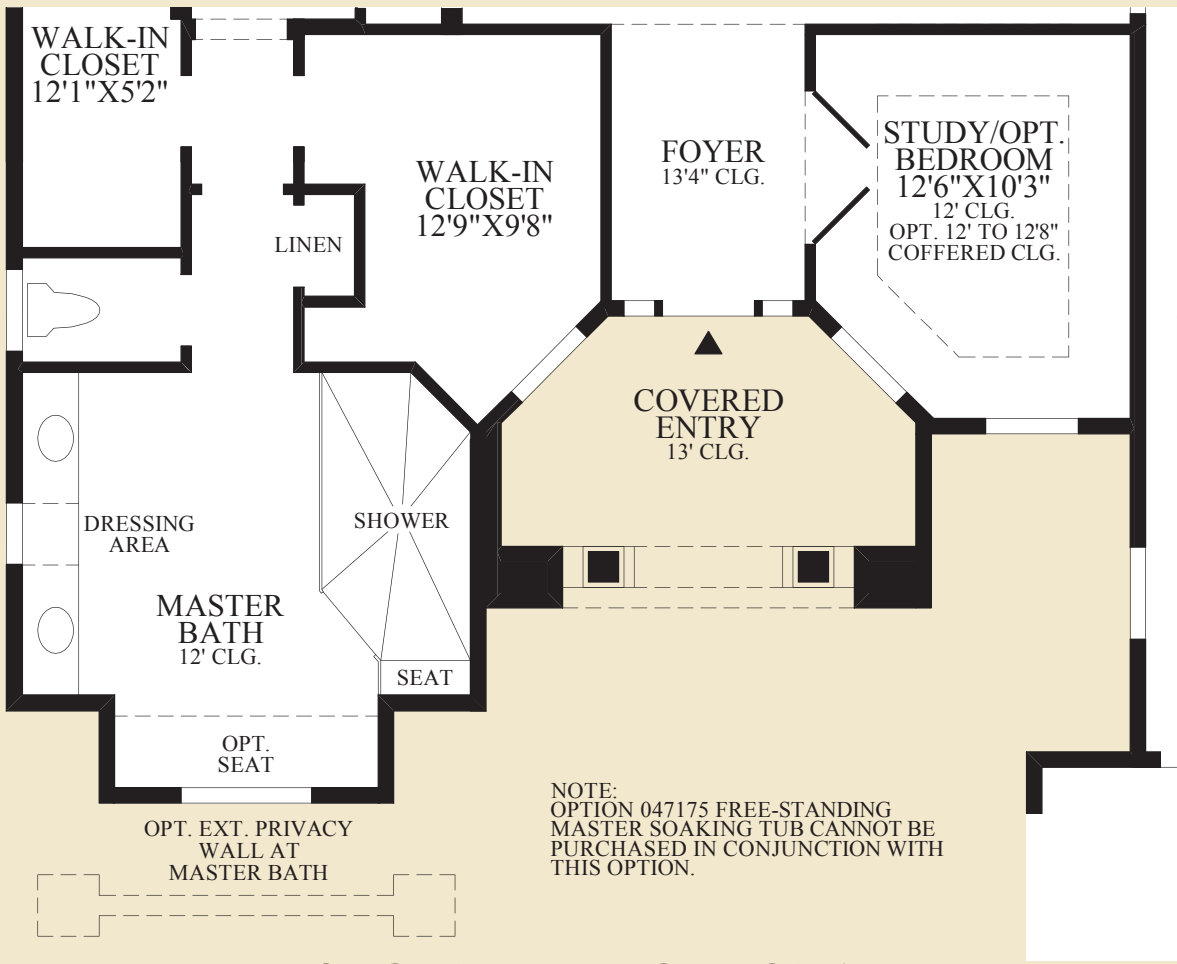




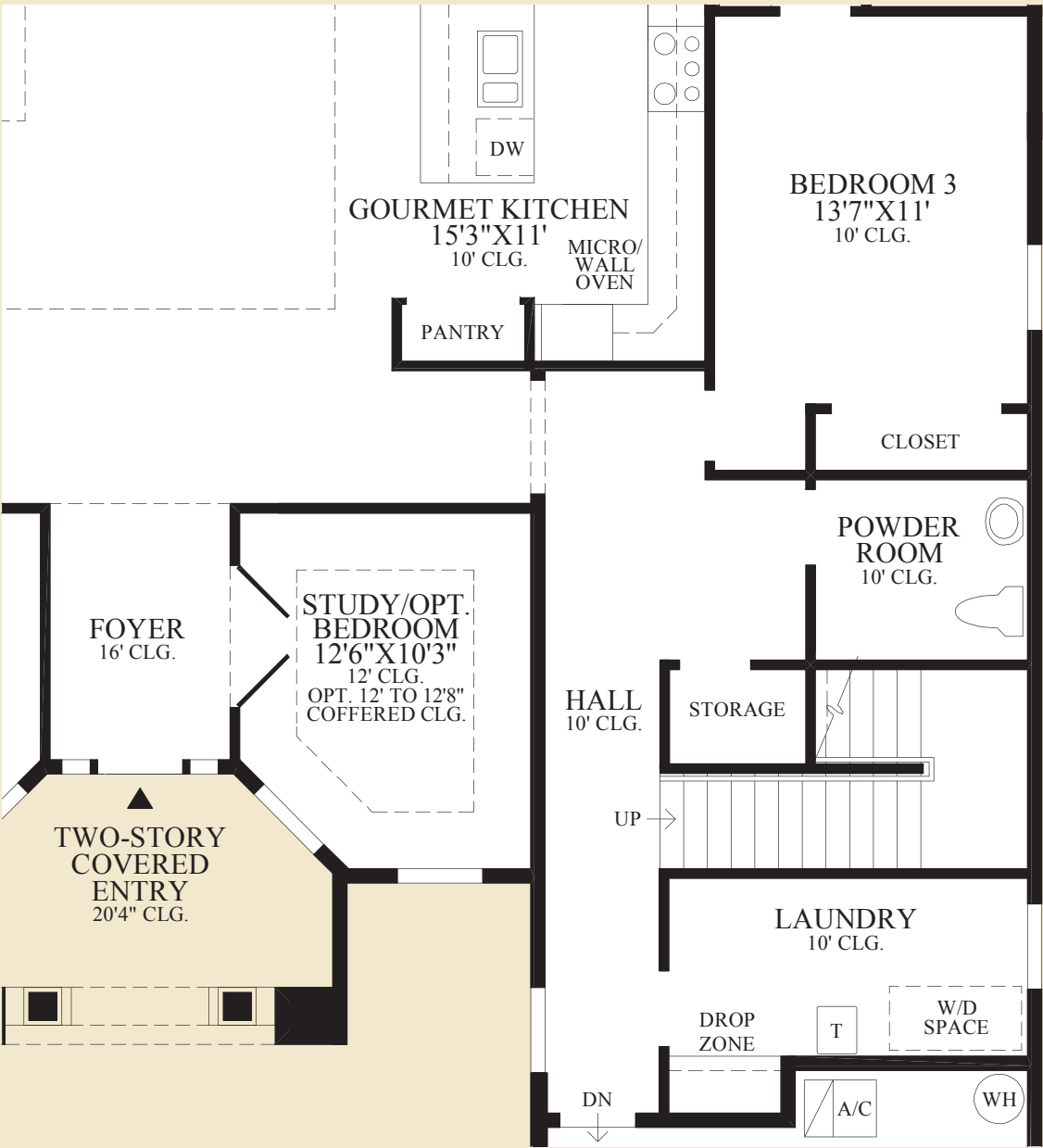
First Floor  
VERSAILLES EXTERIOR DESIGN SHOWN



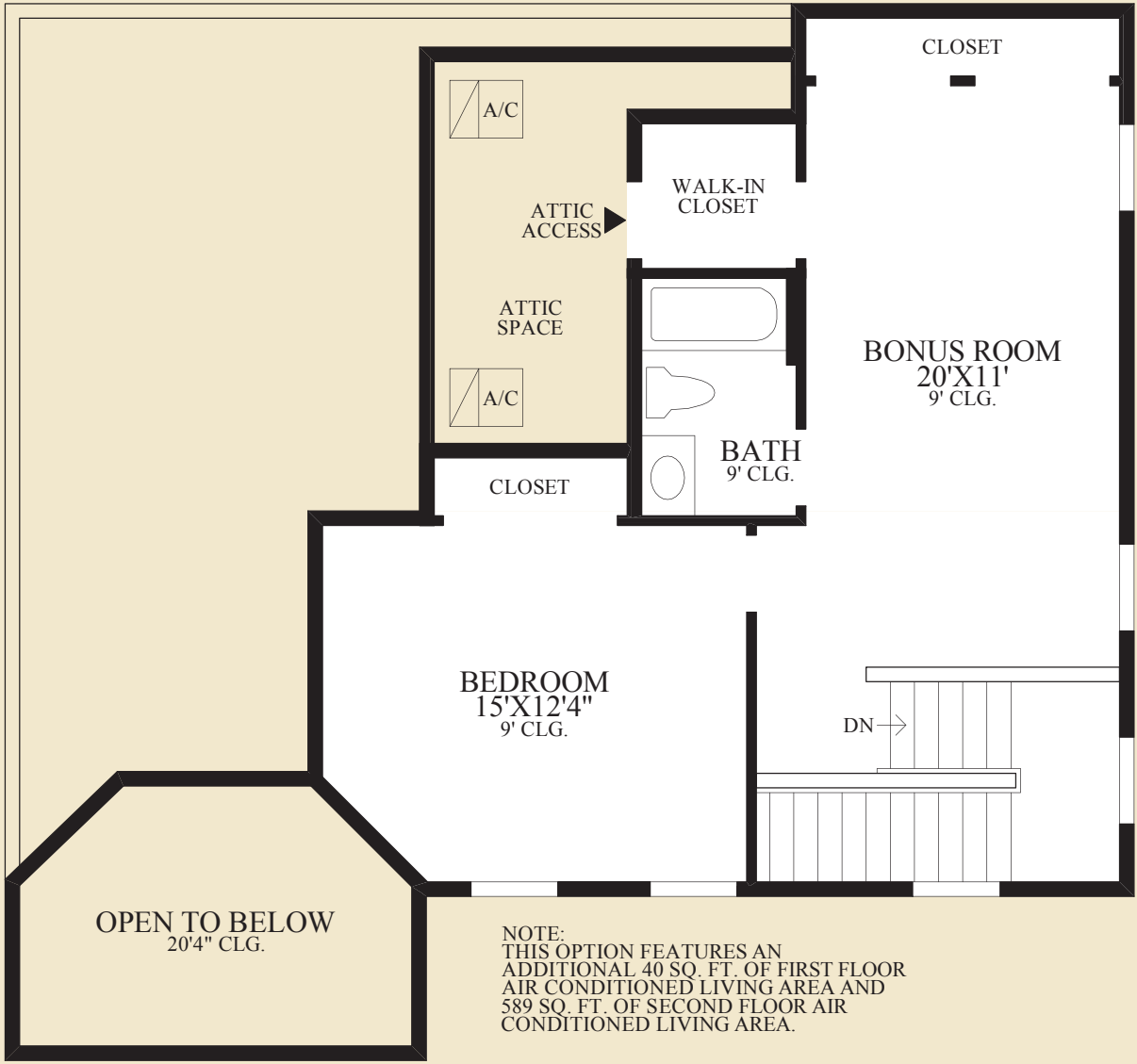
SHOWN WITH OPTIONAL  
BEDROOM IN LIEU OF STUDY



SHOWN WITH OPTIONAL  
ALTERNATE MASTER BATH



SHOWN WITH:  
• STAIRS TO OPTIONAL BONUS ROOM  
• OPTIONAL DROP ZONE



SHOWN WITH OPTIONAL  
BONUS ROOM

THE CASSIA HIGHLIGHTS

- An inviting foyer leads to an impressive study with double-door entry.
- The kitchen includes a separate pantry and large center island that overlooks the sunlit dining area and expansive living room with direct access to the covered lanai.
- The luxurious master bedroom features two large walk-in closets and an opulent master bathroom with dual vanities, a Roman tub, a separate shower, and a private water closet.
- This home is further enhanced by secondary bedrooms, additional full bathrooms, a private study, and a separate laundry room.

Air Conditioned Living Area	2861 sq. ft.
Covered Lanai	373 sq. ft.
Covered Entry	119 sq. ft.



Optional Drop Zone