



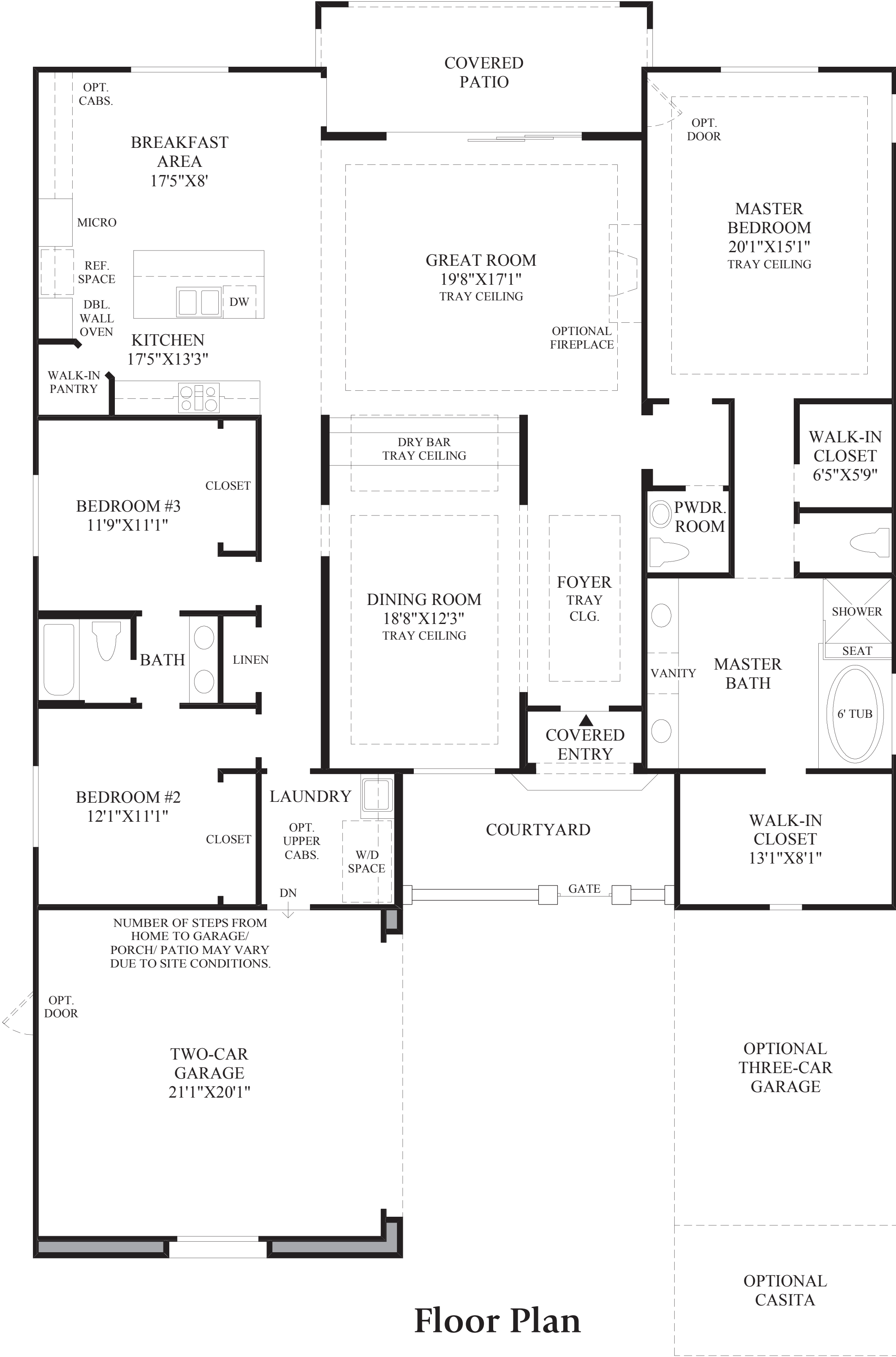
THE CATANIA

THE CATANIA | Exterior Designs

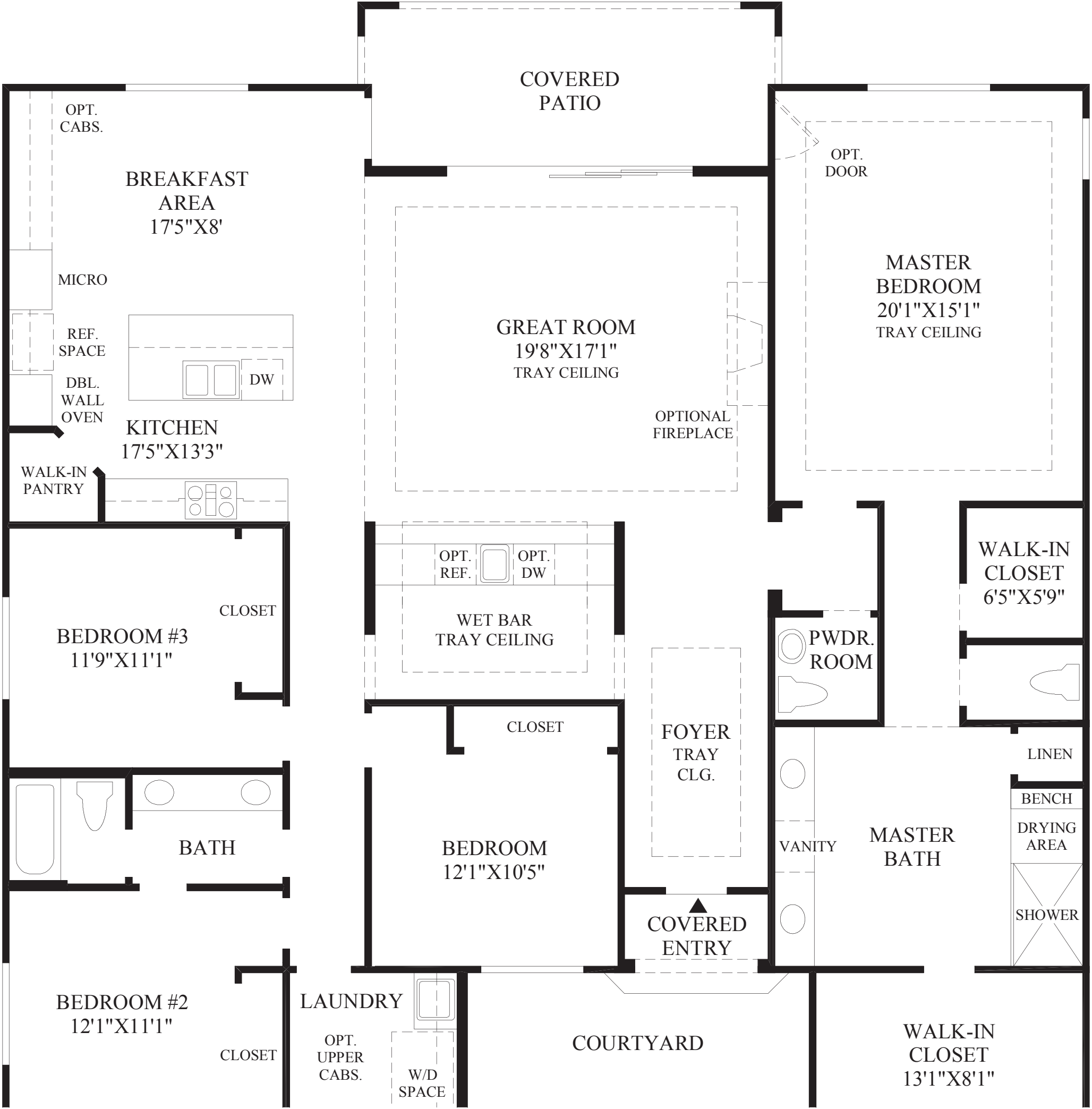


THE CATANIA | Interior





Floor Plan



- SHOWN WITH:
- OPTIONAL WET BAR
 - OPTIONAL ADDITIONAL BEDROOM
 - OPTIONAL ULTRA SHOWER

THE CATANIA HIGHLIGHTS

- An attractive covered entry leads to the stunning foyer that is open to the formal dining room.
- This captivating great room includes a beautiful tray ceiling and 12' sliding glass door to the rear covered patio.
- The magnificent kitchen features an appealing center island with a breakfast bar, a walk-in pantry, and is open to a spacious breakfast area with access to the patio.
- This luxurious master bedroom includes an exquisite master bath which boasts a dual-sink vanity, a glass-enclosed shower, a 6' soaking tub, and dual walk-in closets.
- Additionally, this beautiful home features standard 10' ceilings throughout.

