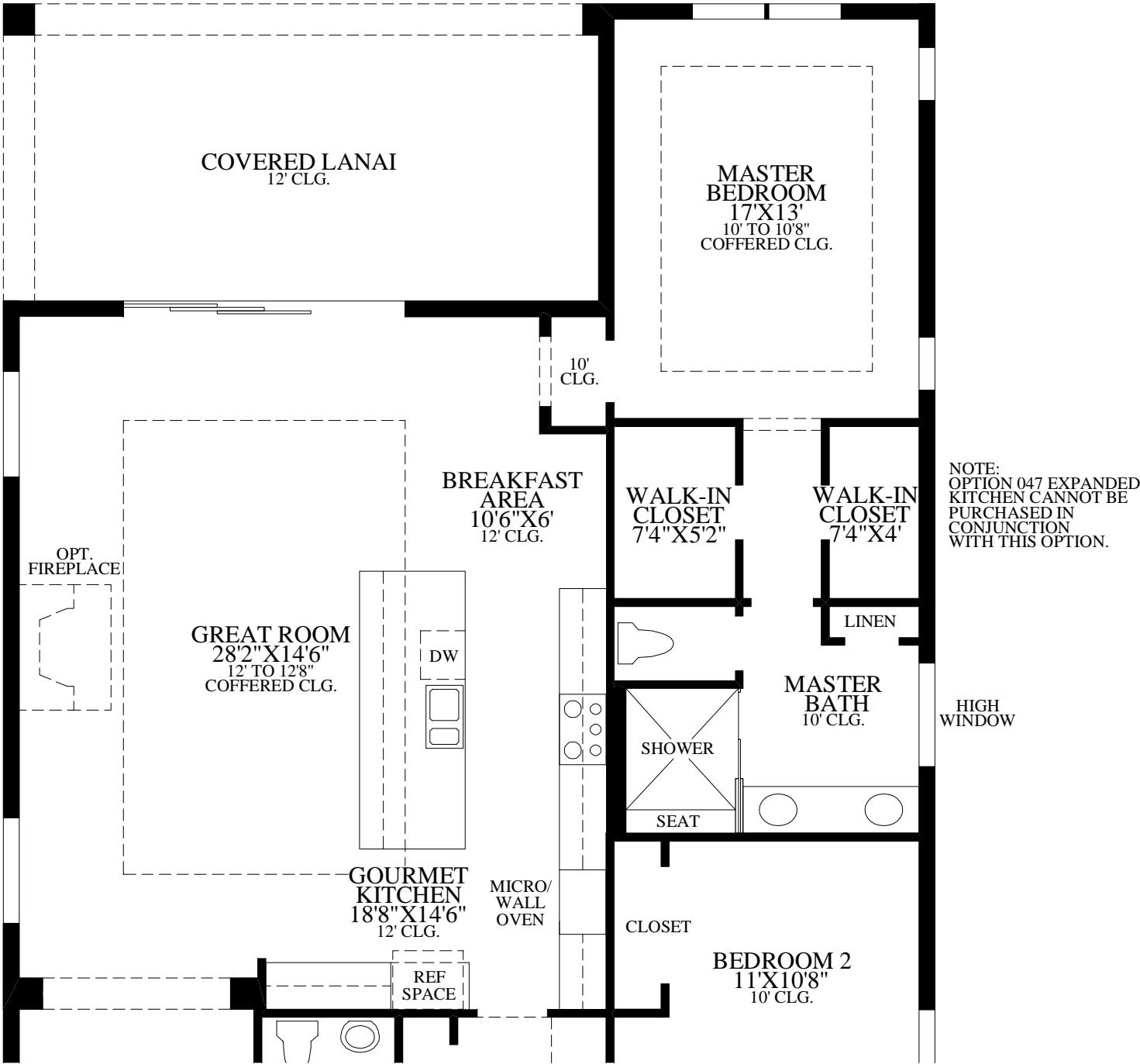
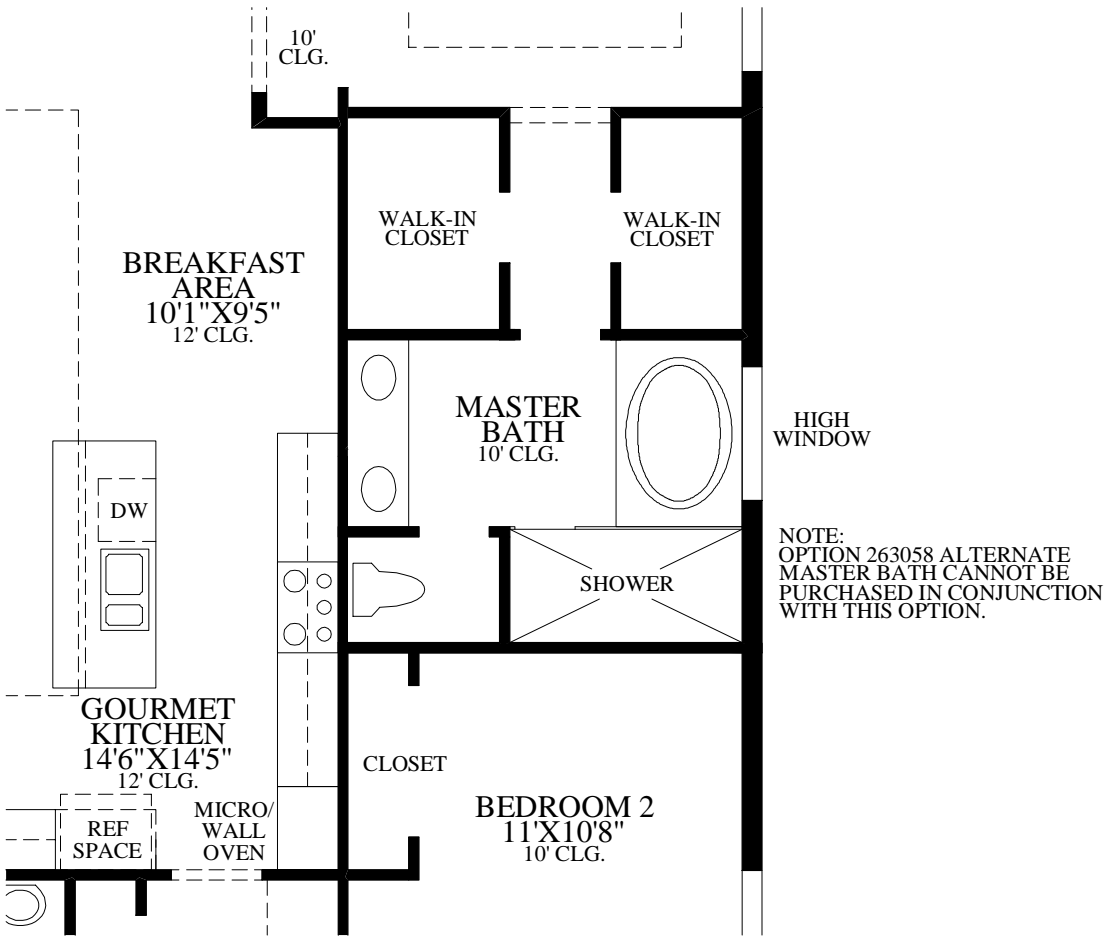


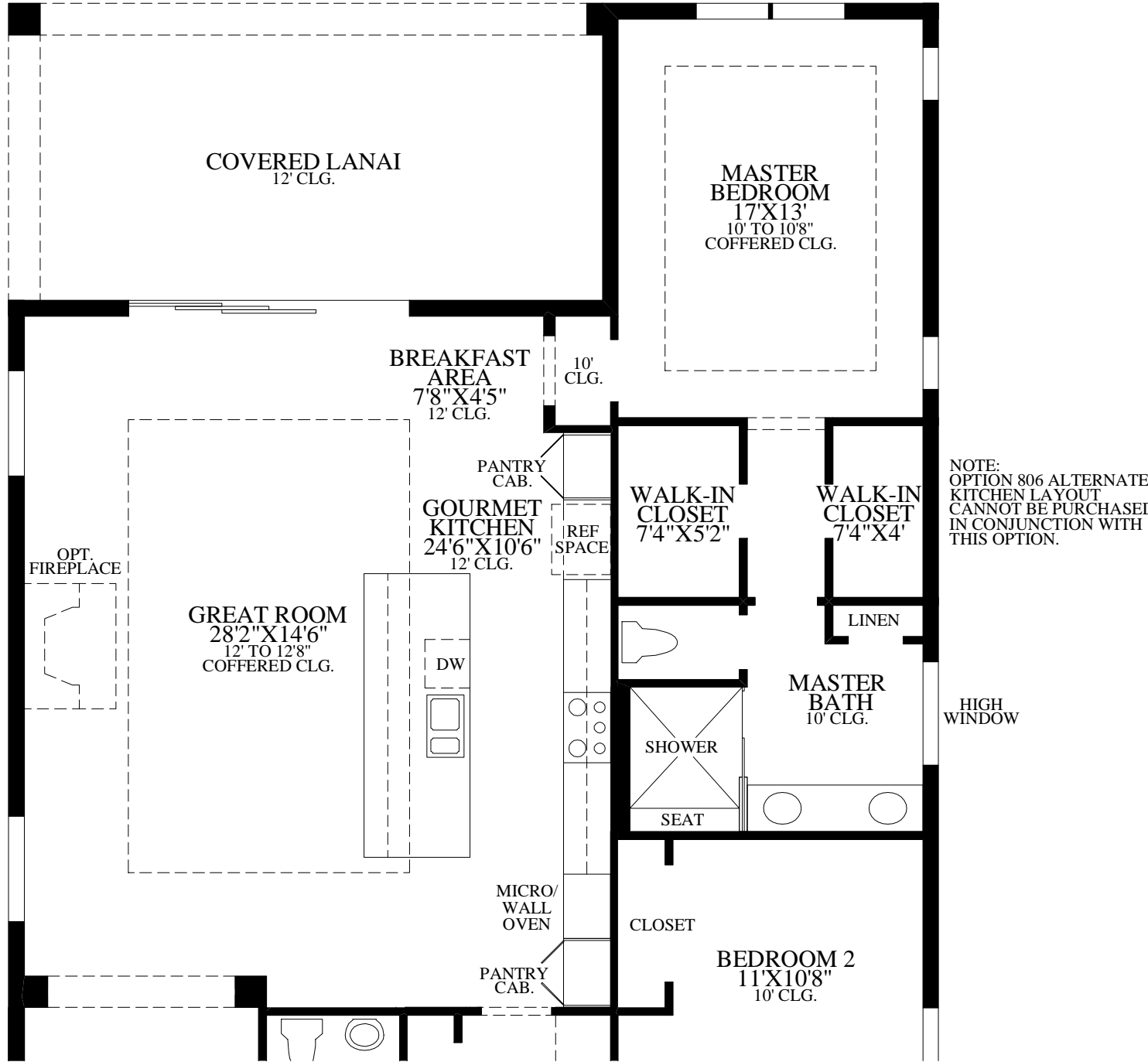
Floor Plan  
SPANISH COLONIAL EXTERIOR DESIGN SHOWN



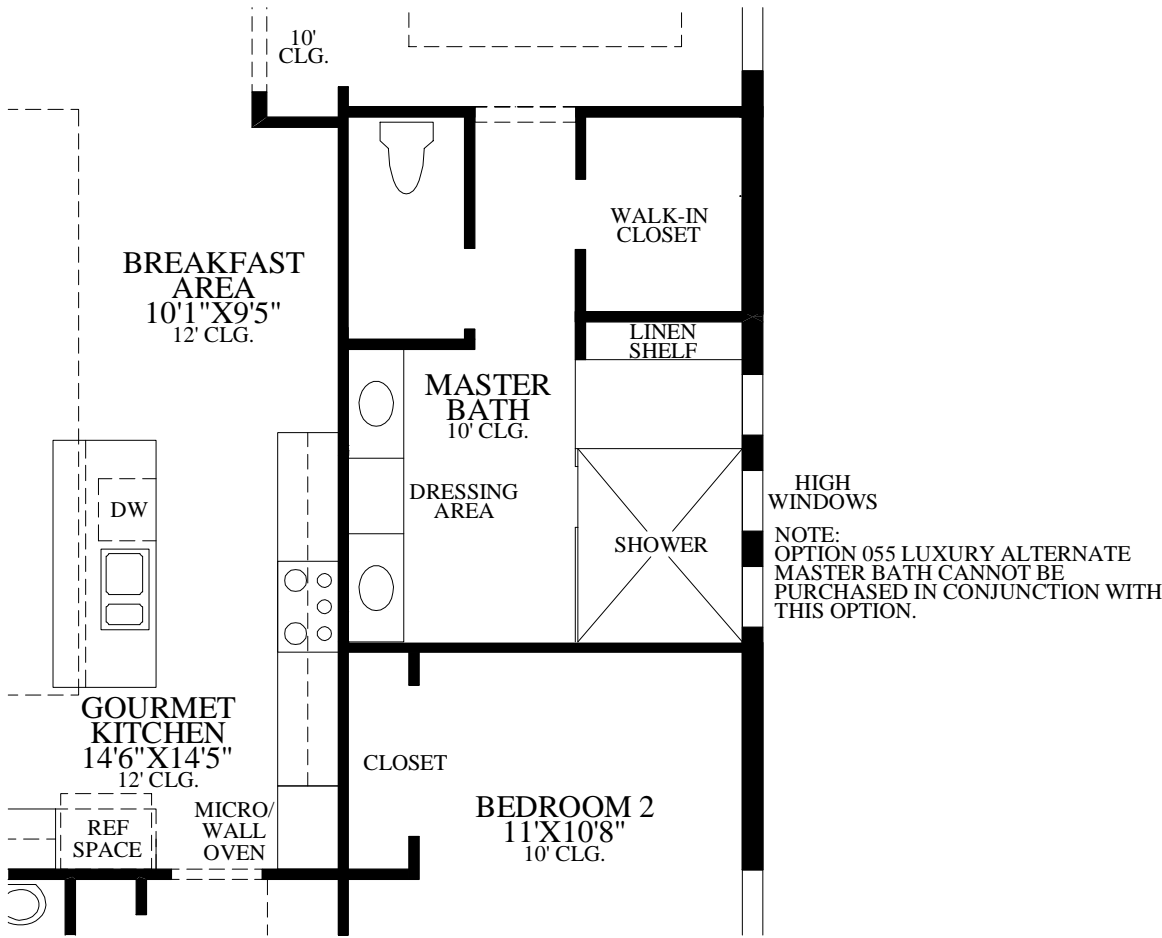
SHOWN WITH OPTIONAL  
ALTERNATE KITCHEN LAYOUT



SHOWN WITH OPTIONAL LUXURY  
ALTERNATE MASTER BATH



SHOWN WITH OPTIONAL  
EXPANDED KITCHEN



SHOWN WITH OPTIONAL  
ALTERNATE MASTER BATH

THE CAYMAN HIGHLIGHTS

• The large covered entry at corner of home leads to a welcoming foyer with expansive views.	Air Conditioned Living Area	2131 sq. ft.
• The open kitchen layout offers a large center island, pantry, and ample cabinetry, while adjacent to the breakfast area, great room, and covered lanai.	Covered Lanai	321 sq. ft.
• An enchanting master bedroom is illuminated with magnificent windows and features a coffered ceiling and two walk-in closets. The luxurious master bathroom includes a dual sink vanity, glass-enclosed shower, and private water closet.	Covered Entry	104 sq. ft.
• This home is further enhanced by additional bedrooms, full bathroom, powder room, and a conveniently-located laundry room.		