



Traditional

# THE CHARLESTON

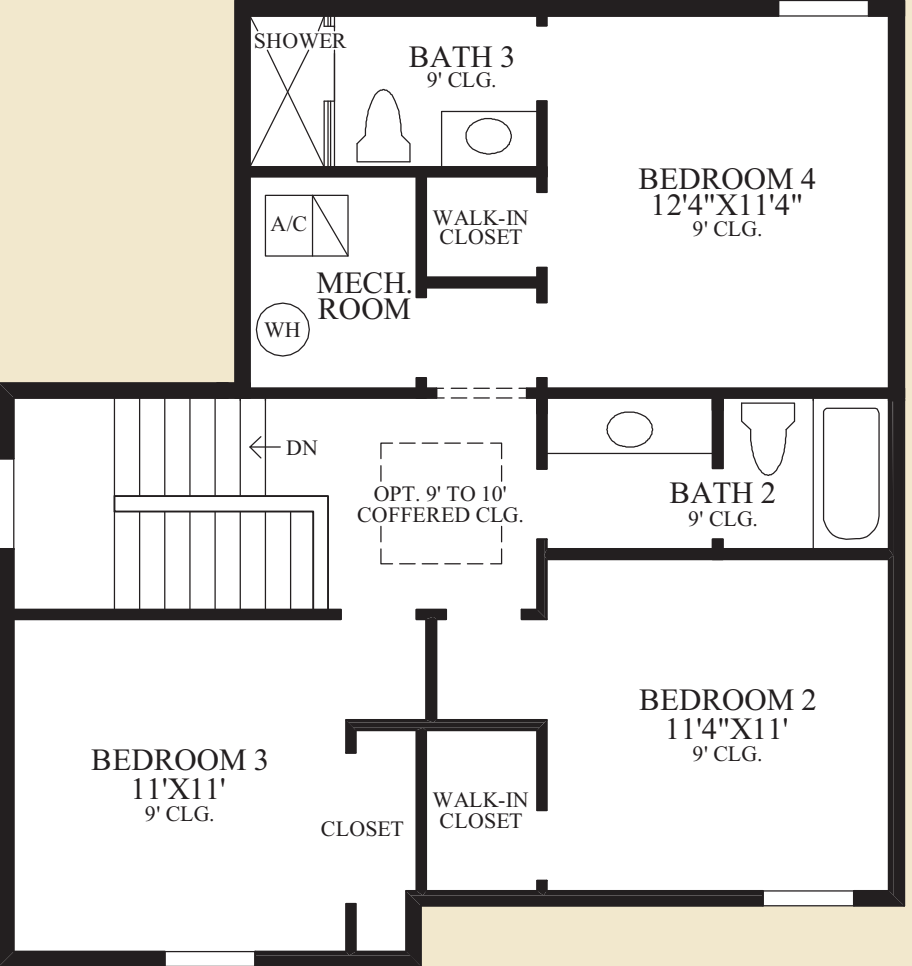
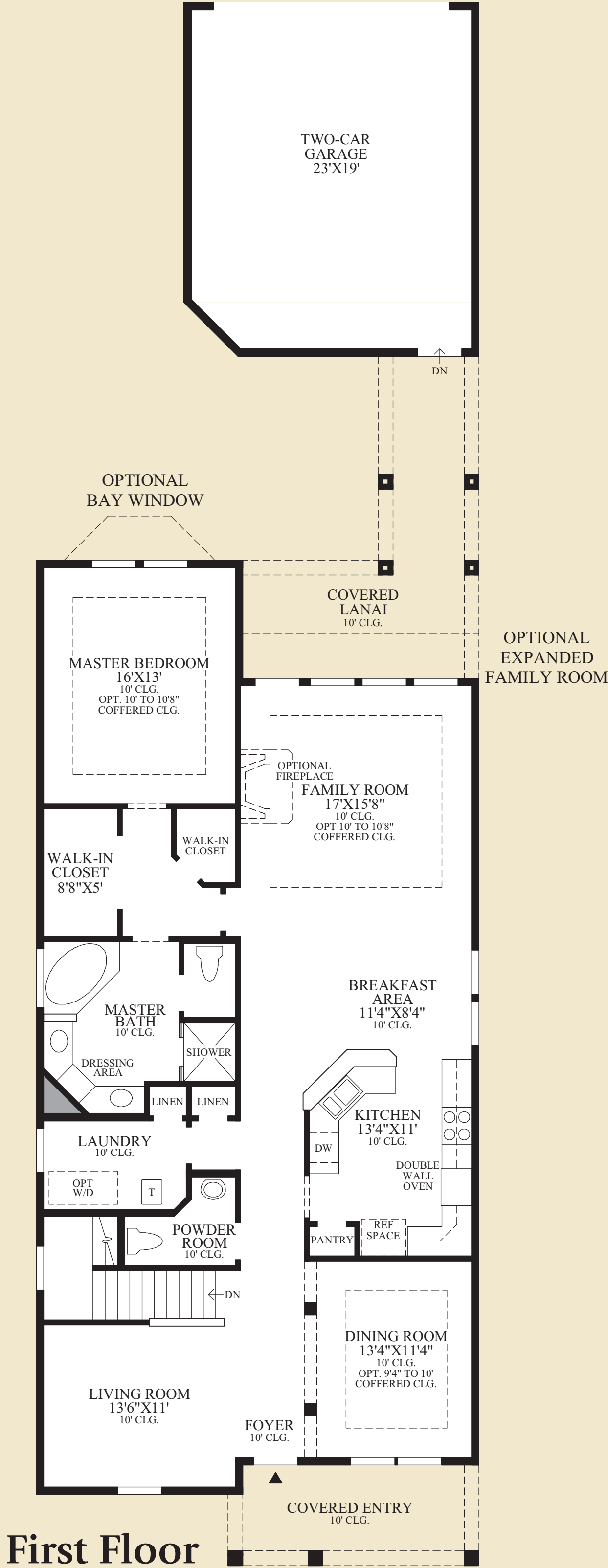
## THE CHARLESTON | Exterior Designs



Heritage

***Toll Brothers***  
America's Luxury Home Builder®





THE CHARLESTON HIGHLIGHTS

- The welcoming foyer of this charming home is flanked by a lovely living room and a formal dining room which is accented by a beautiful arched opening.
- The well-appointed kitchen features a separate pantry and raised snack bar that overlooks a cozy breakfast area and a spacious family room.
- The luxurious master bedroom suite includes two-walk-in closets and an opulent master bath with dual-sink vanity with a dressing area, a Roman tub, a separate shower, and a private water closet.
- Upstairs, two additional bedrooms share a large full bath. Other highlighted of this neo-traditional home include a separate laundry room and an expansive covered lanai which joins the main house with a two-car garage.

|                             |              |
|-----------------------------|--------------|
| First Floor                 | 1740 sq. ft. |
| Second Floor                | 517 sq. ft.  |
| Air Conditioned Living Area | 2257 sq. ft. |
| Covered Lanai               | 227 sq. ft.  |
| Covered Entry               | 114 sq. ft.  |