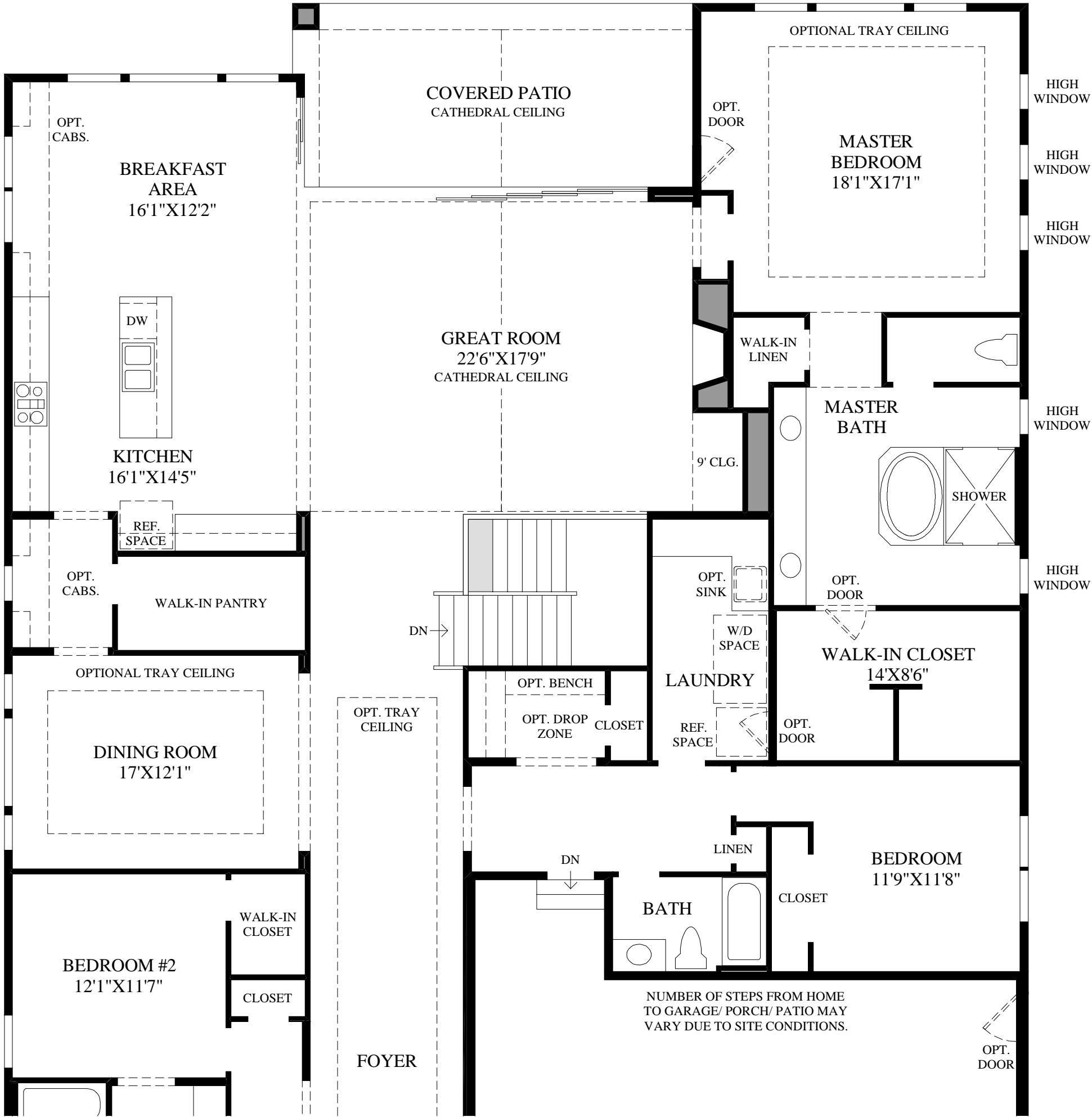


Floor Plan
CLASSIC EXTERIOR DESIGN SHOWN



- SHOWN WITH:
- OPTIONAL FIRST-FLOOR BEDROOM IN LIEU OF STUDY
 - OPTIONAL CORNER MULTI-SLIDE DOOR

THE CHATFEILD HIGHLIGHTS

- A stately covered entry leads into the elegant foyer with a clear line of sight to the impressive great room located beyond.
- This enticing great room is adorned with a cozy fireplace and features a cathedral ceiling which extends out to the generous covered patio.
- A luxurious kitchen with an adjoining breakfast area is equipped with a center island, ample counter and cabinet space, as well as an oversized walk-in pantry.
- The remarkable master bedroom is graced by a marvelous master bath which boasts a soaking tub, a large shower, a dual-sink vanity, and a sizable walk-in closet.
- Additional highlights include a private study suitable for home office use and a formal dining room.