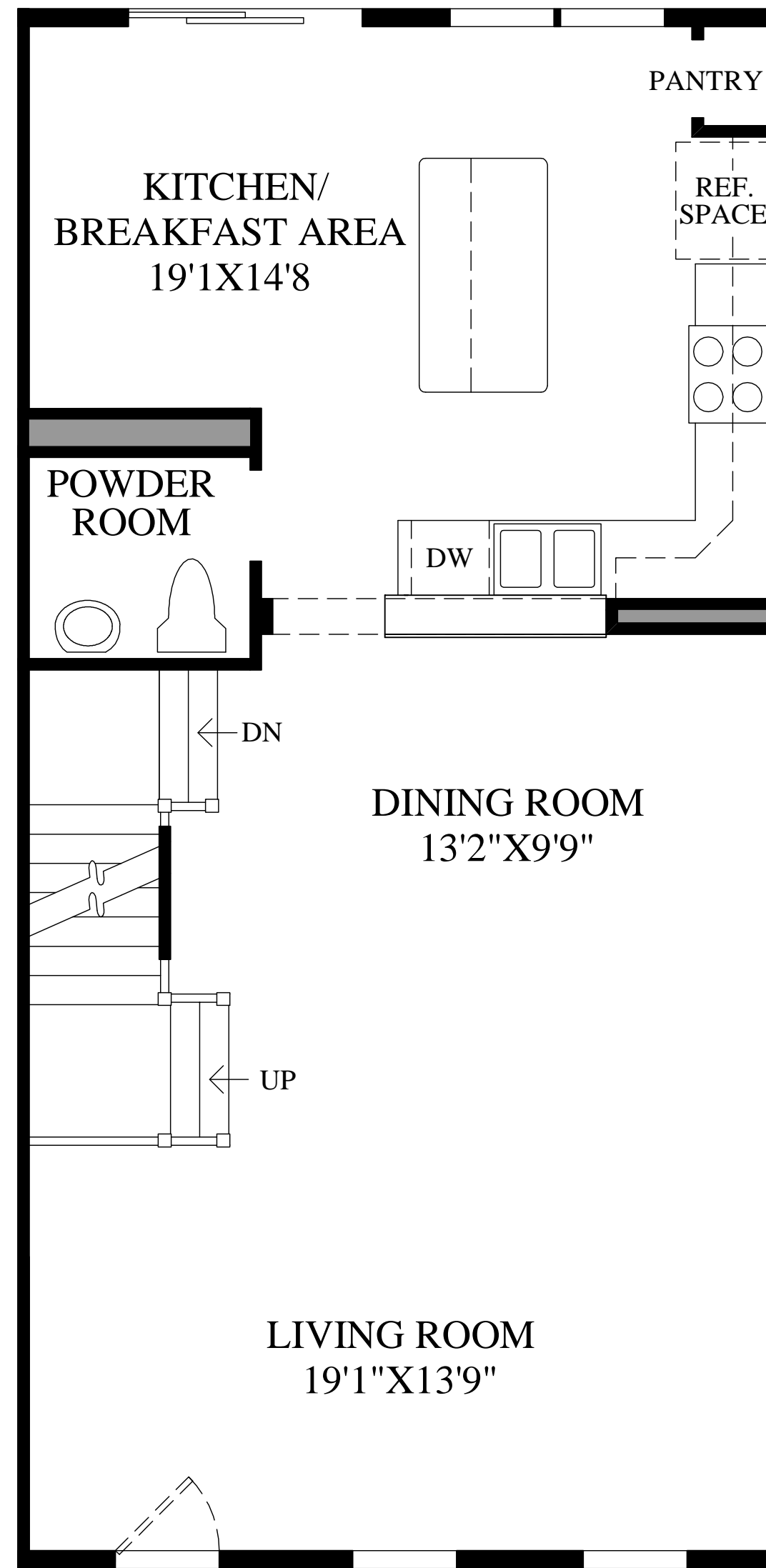
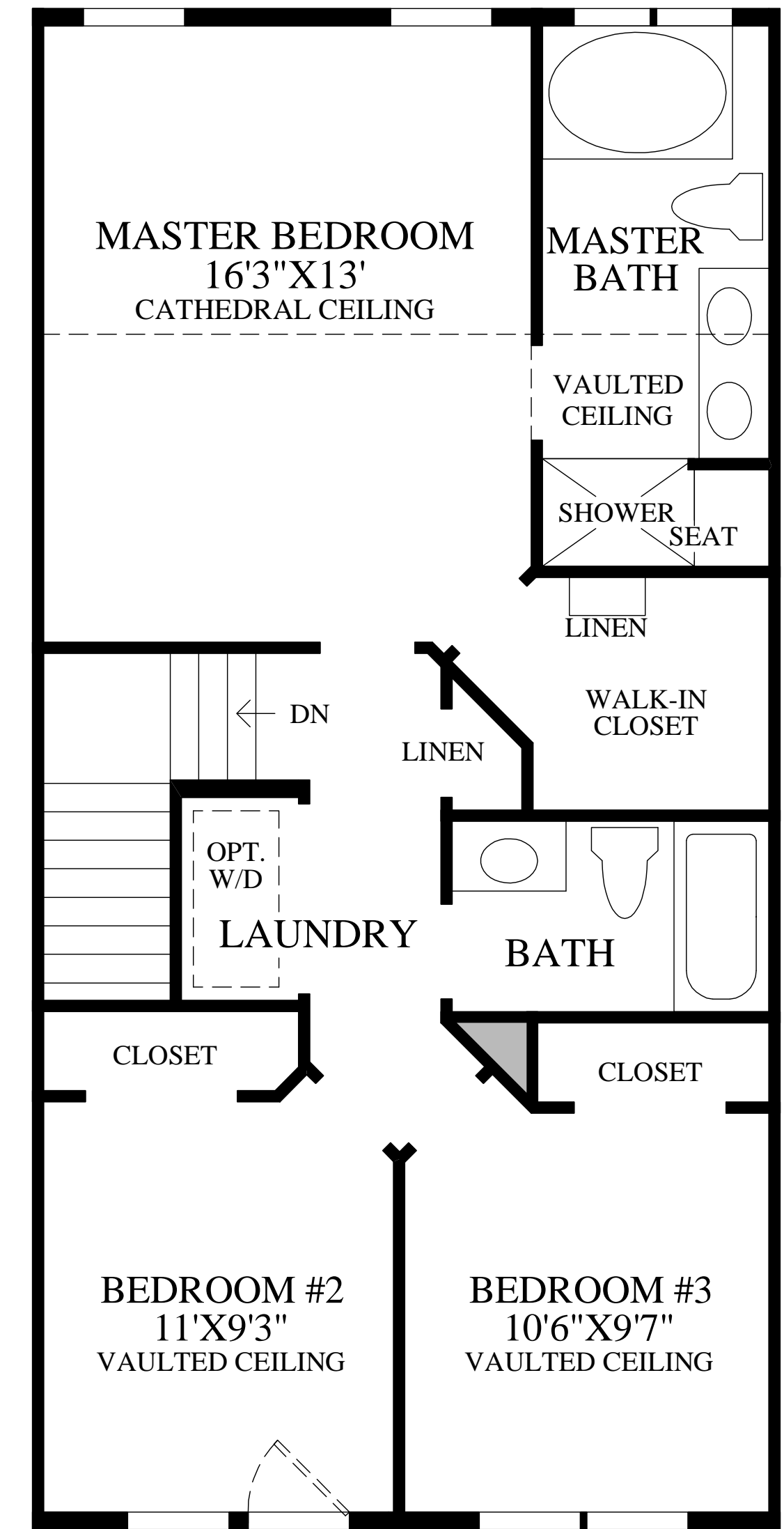


**Lower Level**



EASTERN SHORE ELEVATION INCLUDES A DOOR FROM THE LIVING ROOM TO THE PORCH.

**Living Level**



EASTERN SHORE ELEVATION INCLUDES A DOOR FROM BEDROOM #2 TO THE PORCH.

**Bedroom Level**

**THE CLERMONTE HIGHLIGHTS**

- The lower level foyer offers views of a hall that would be ideal for an art gallery and a one-car garage with ample storage.
- The living level includes a large living room with views of the lovely turned stair.
- The living room is also located adjacent to the dining room creating an ideal space for entertaining.
- The kitchen boasts a large center island, a pantry closet, and an attached breakfast area that features sliding glass doors.
- The bedroom level includes a master bedroom that is highlighted by a walk-in closet and a private bath that includes a Roman tub, dual-sink vanity, and a separate shower with a seat.
- There are also two additional bedrooms and a hall bath, as well as the laundry conveniently located on the bedroom level.